

F.A.S. RTE.	SECTION	COUNTY	TOTAL SHEETS	SHEET NO.
731	(1)I-2	MACOUPIN	8	1
ILLINOIS				

STATE OF ILLINOIS
DEPARTMENT OF TRANSPORTATION
DIVISION OF HIGHWAYS

PLANS FOR PROPOSED
CONTRACT MAINTENANCE

FAS ROUTE 731 (SCOTTVILLE ROAD)
SECTION (1)I-2

PROPOSED BITUMINOUS SHOULDERS, BOTH SIDES OF RDWY.
MACOUPIN COUNTY
C-96-166-10

INDEX OF SHEETS

- 1 COVER SHEET
- 2 GENERAL NOTES /MIX REQUIREMENTS
- 3 SUMMARY OF QUANTITIES
- 4 TYPICAL CROSS SECTIONS
- 5-8 PLAN LAYOUT SHEETS

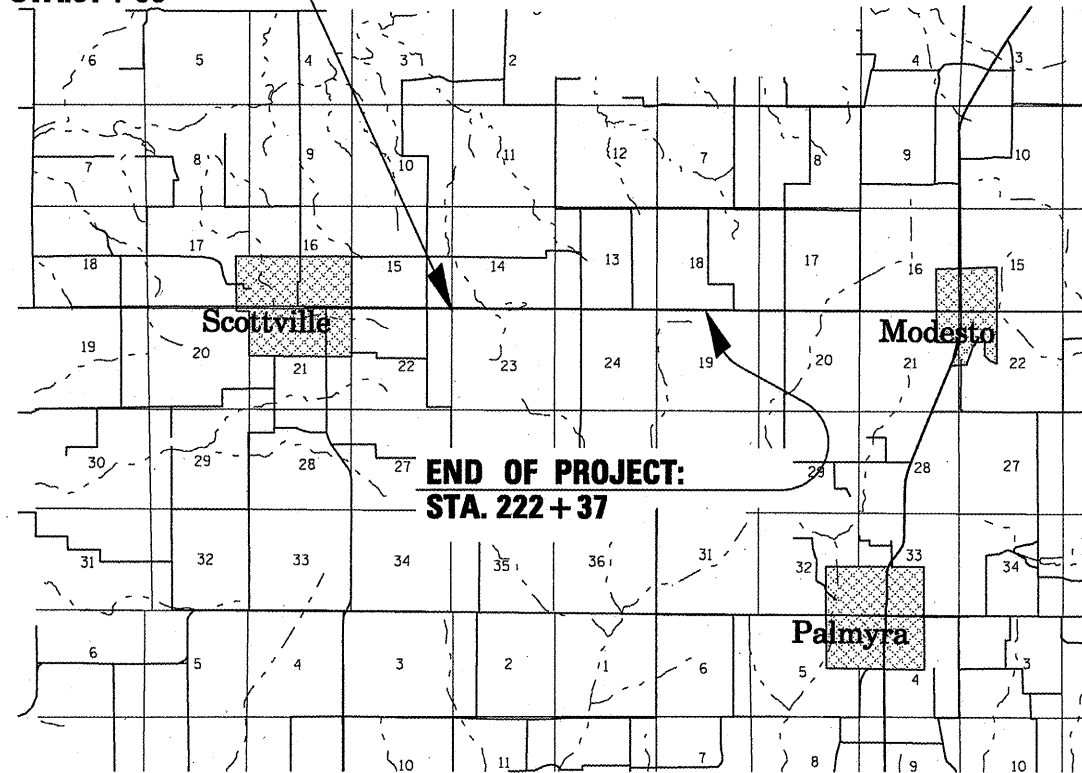
LIST OF STANDARDS

000001-05	701311-03
701001-02	701326-03
701006-03	701901-01
701011-02	780001-02
701301-03	

D-96-166-10



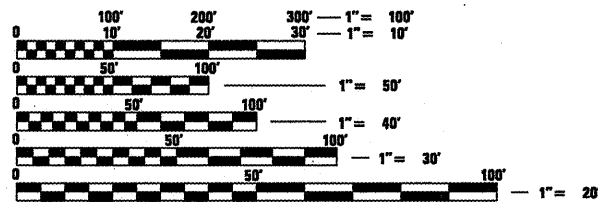
BEGINNING OF PROJECT:
STA. 91 + 00



LOCATION MAP

GROSS LENGTH = 13,137 FT. = 2.496 MILES

NET LENGTH = 13,137 FT. = 2.496 MILES



FULL SIZE PLANS HAVE BEEN PREPARED USING STANDARD ENGINEERING SCALES. REDUCED SIZED PLANS WILL NOT CONFORM TO STANDARD SCALES. IN MAKING MEASUREMENTS ON REDUCED PLANS, THE ABOVE SCALES MAY BE USED.

J.U.L.I.E.
 JOINT UTILITY LOCATION INFORMATION FOR EXCAVATION
 1-800-892-0123
 OR 811

STATE OF ILLINOIS
 DEPARTMENT OF TRANSPORTATION
 DIVISION OF HIGHWAYS

SUBMITTED December 15, 2009
[Signature]
 DEPUTY DIRECTOR OF HIGHWAYS, REGION ENGINEER

January 29, 2010
[Signature]
 ENGINEER OF DESIGN AND ENVIRONMENT

January 29, 2010
[Signature]
 DIRECTOR OF HIGHWAYS, CHIEF ENGINEER

PRINTED BY THE AUTHORITY
OF THE STATE OF ILLINOIS

PROJECT ENGINEER: SAL MADONIA (217) 782-4761
 SQUAD LEADER: MARCUS BRUCE (217) 524-0946

CONTRACT NO. 72D38