

STATE OF ILLINOIS  
 DEPARTMENT OF TRANSPORTATION  
 DIVISION OF HIGHWAYS

**PROPOSED  
 HIGHWAY PLANS**

FAS ROUTE 1652 (US 45)  
 SECTION (12,13) RS-3

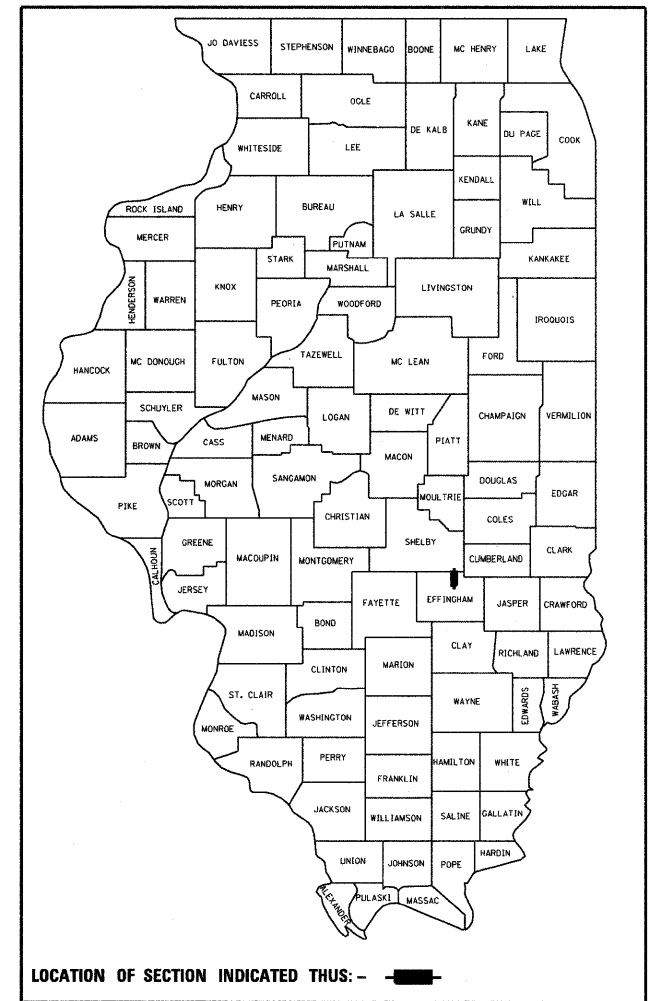
RESURFACING  
 EFFINGHAM COUNTY

C-97-061-09

F.A.S. RTE.	SECTION	COUNTY	TOTAL SHEETS	SHEET NO.
1652	(12,13) RS-3	EFFINGHAM	15	1
		ILLINOIS	CONTRACT NO. 74376	

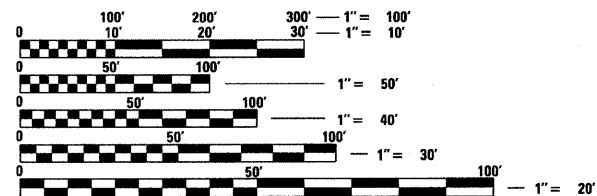
FOR INDEX OF SHEETS, SEE SHEET NO. 2

D-97-032-09



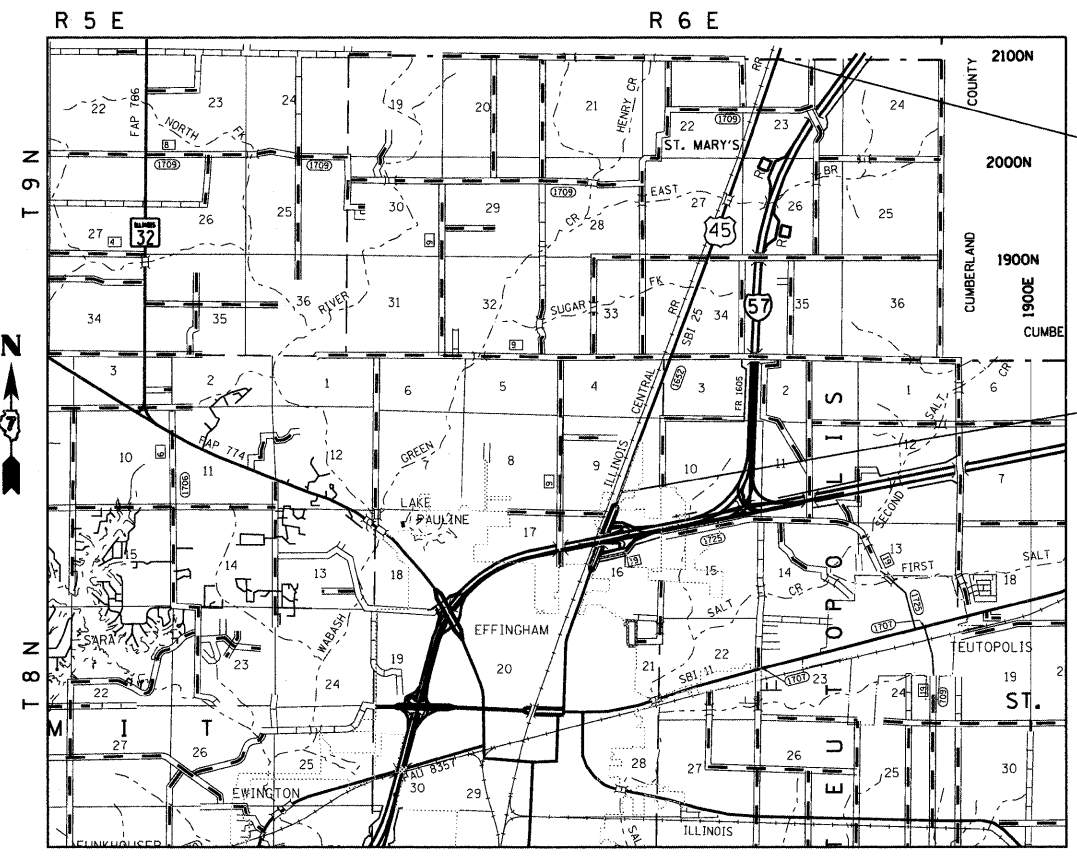
LOCATION OF SECTION INDICATED THUS: - [black rectangle] -

ADT = 4200



FULL SIZE PLANS HAVE BEEN PREPARED USING STANDARD ENGINEERING SCALES. REDUCED SIZED PLANS WILL NOT CONFORM TO STANDARD SCALES. IN MAKING MEASUREMENTS ON REDUCED PLANS, THE ABOVE SCALES MAY BE USED.

J.U.L.I.E.  
 JOINT UTILITY LOCATION INFORMATION FOR EXCAVATION  
 1-800-892-0123  
 OR 811



FAS 1652  
 SECTION (12, 13) RS-3  
 EFFINGHAM COUNTY  
 ENDS STA 340+50

FAS 1652  
 SECTION (12, 13) RS-3  
 EFFINGHAM COUNTY  
 BEGINS STA 95+25

PROJECT ENGINEER: TOM RONAN  
 PROJECT MANAGER: KEVIN BRADY  
 TOWNSHIP: DOUGLAS  
 CONTRACT NO. 74376

GROSS LENGTH = 24,525 FT. = 4.64 MILES  
 NET LENGTH = 24,525 FT. = 4.64 MILES

STATE OF ILLINOIS  
 DEPARTMENT OF TRANSPORTATION  
 DIVISION OF HIGHWAYS

SUBMITTED *November 25 2009*

*Roger L. Shindell*  
 DEPUTY DIRECTOR OF HIGHWAYS, REGION ENGINEER

*January 29 2010*  
*Scott E. Stitt P.E./e*  
 ENGINEER OF DESIGN AND ENVIRONMENT

*January 29 2010*  
*Christina M. Reed/e*  
 DIRECTOR OF HIGHWAYS, CHIEF ENGINEER

**PRINTED BY THE AUTHORITY  
 OF THE STATE OF ILLINOIS**