

STATE OF ILLINOIS
DEPARTMENT OF TRANSPORTATION
DIVISION OF HIGHWAYS
PROPOSED
HIGHWAY PLANS

FOR INDEX OF SHEETS, SEE SHEET NO. 2

FAP ROUTE 832 (IL. RTE. 49)
SECTION 4RS-1, 114RS-2

RESURFACING (SMART)
COLES COUNTY

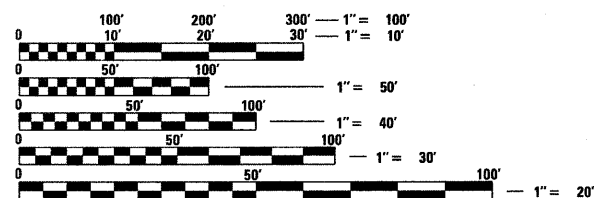
C-97-133-09

F.A.P. RTE.	SECTION	COUNTY	TOTAL SHEETS	SHEET NO.
832	4 RS-1, 114 RS-2	COLES	22	1
		ILLINOIS	CONTRACT NO. 74418	

D-97-076-09



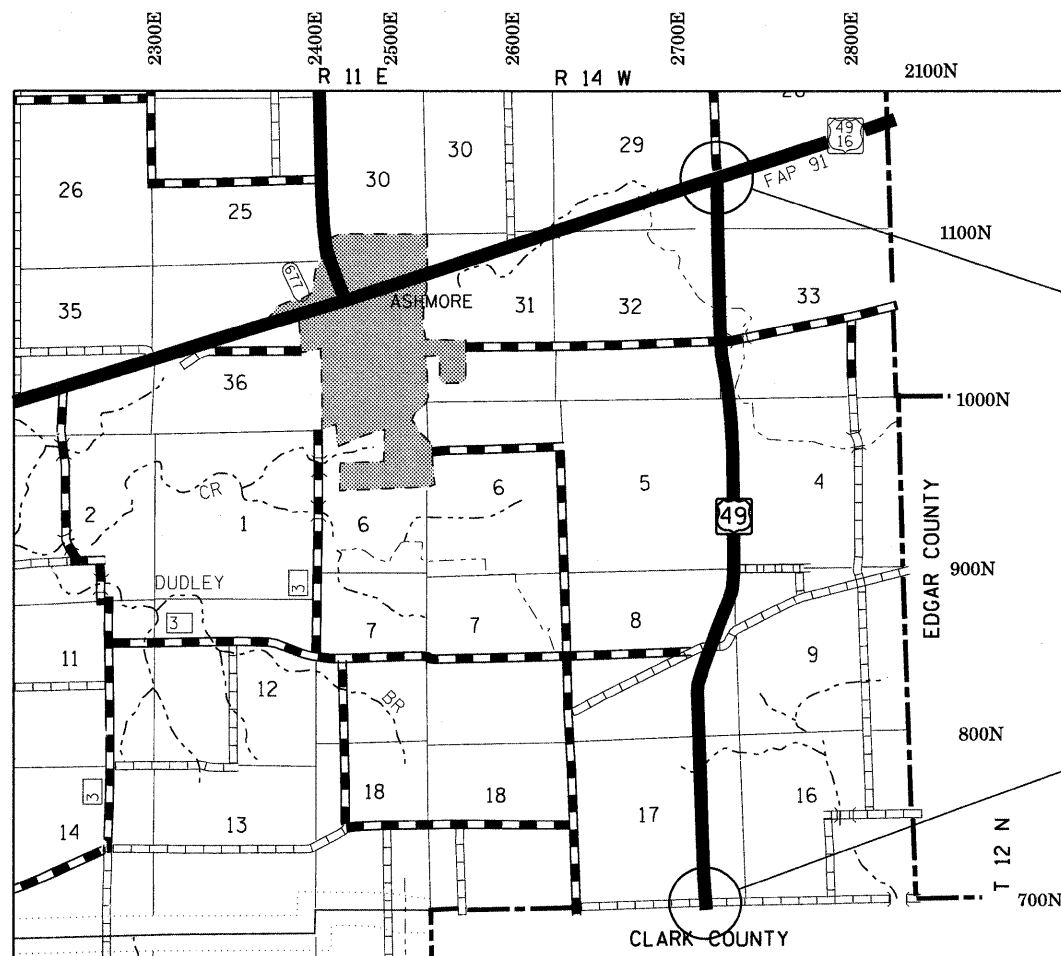
ADT = 950



FULL SIZE PLANS HAVE BEEN PREPARED USING STANDARD ENGINEERING SCALES. REDUCED SIZED PLANS WILL NOT CONFORM TO STANDARD SCALES. IN MAKING MEASUREMENTS ON REDUCED PLANS, THE ABOVE SCALES MAY BE USED.

J.U.L.I.E.
 JOINT UTILITY LOCATION INFORMATION FOR EXCAVATION
 1-800-892-0123
 OR 811

PROJECT ENGINEER: TOM RONAN
PROJECT MANAGER: KEVIN BRADY
ASHMORE TOWNSHIP
CONTRACT NO. 74418



FAP ROUTE 832 (IL. RTE. 49)
SECTION: 4RS-1, 114RS-2
COLES COUNTY
PROJECTS ENDS:
STA 887 + 87

FAP ROUTE 832 (IL. RTE. 49)
SECTION: 4RS-1, 114RS-2
COLES COUNTY
PROJECTS BEGINS:
STA 655 + 75

GROSS LENGTH = 23,212 FT. = 4.40 MILES
 NET LENGTH = 23,212 FT. = 4.40 MILES

STATE OF ILLINOIS
 DEPARTMENT OF TRANSPORTATION
 DIVISION OF HIGHWAYS

SUBMITTED *November 24 2009*

Ray L. Spickell
 DEPUTY DIRECTOR OF HIGHWAYS, REGION ENGINEER

January 09 2010
Scott E. Stitt P.E./e
 ENGINEER OF DESIGN AND ENVIRONMENT

January 29 2010
Christine M. Reed/e
 DIRECTOR OF HIGHWAYS, CHIEF ENGINEER

PRINTED BY THE AUTHORITY
OF THE STATE OF ILLINOIS