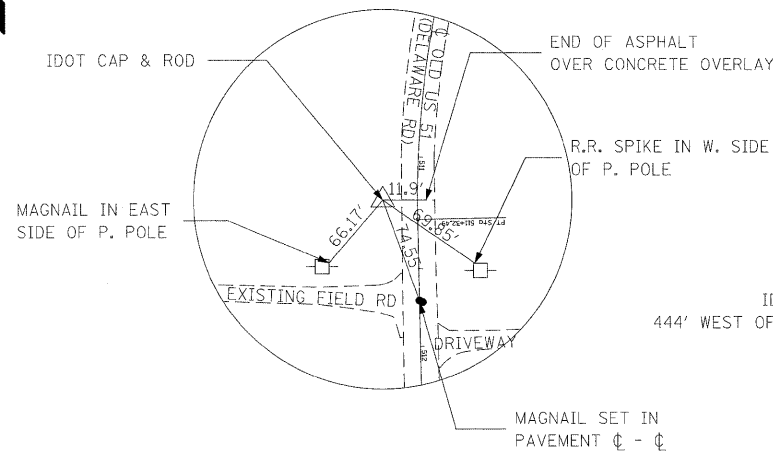


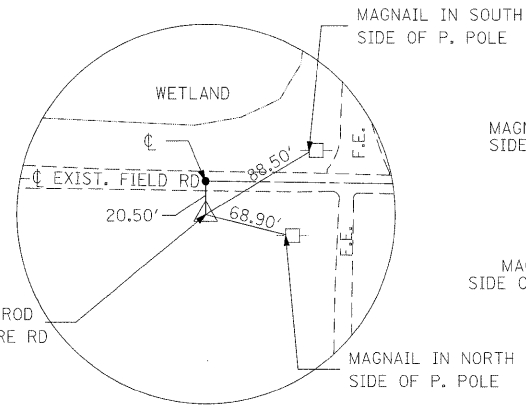
TBM 513: RR SPIKE SET IN WEST SIDE OF POWER POLE ON EAST SIDE OF OLD U.S. 51 (DELAWARE RD) ACROSS FROM EAST END OF FIELD ROAD TO BE IMPROVED, NEAR THE NW CORNER OF PROPERTY ADDRESSED.
STATION ±511+81, 29' LEFT, ELEVATION 535.954.

TBM 512: RR SPIKE SET IN SOUTH SIDE OF POWER POLE IN LINE WITH AND WEST OF THE CENTERLINE OF THE FIELD ROAD TO BE IMPROVED, AND IN LINE WITH AND NORTH OF THE EXISTING OIL AND CHIP FRONTAGE ROAD LOCATED ON THE EAST SIDE OF U.S. 51 SIDE OF I-64.
STATION ±15+54, 13.5' LEFT, ELEVATION 532.692.



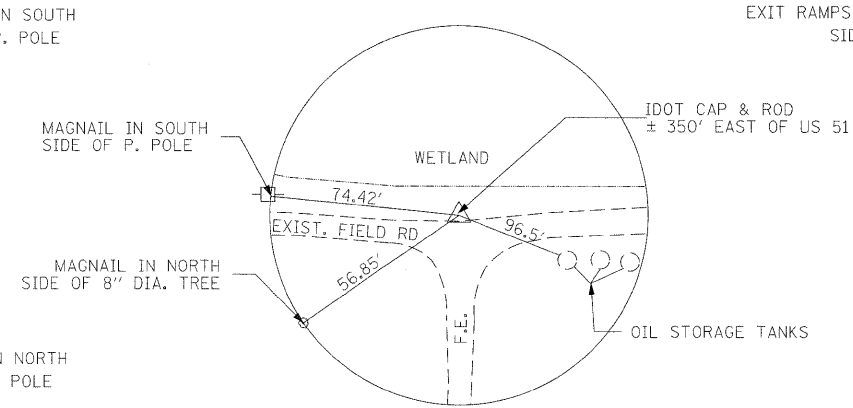
CONTROL POINT 50

STATION ± 25+20 (PROPOSED SERVICE RD)
OFFSET 73' LEFT
N. 628,294.7401 E. 582,629.1576



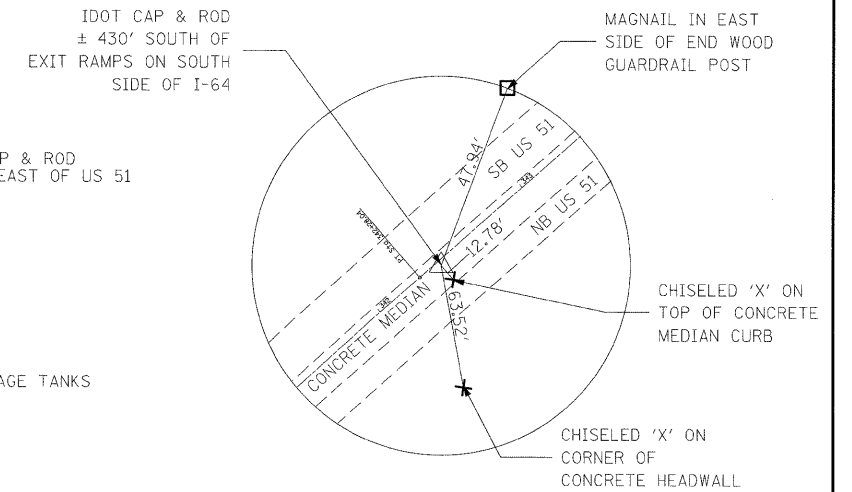
CONTROL POINT 51

STATION ± 20+89 (PROPOSED SERVICE RD)
OFFSET 22' LEFT
N. 628,208.4662 E. 582,196.4458



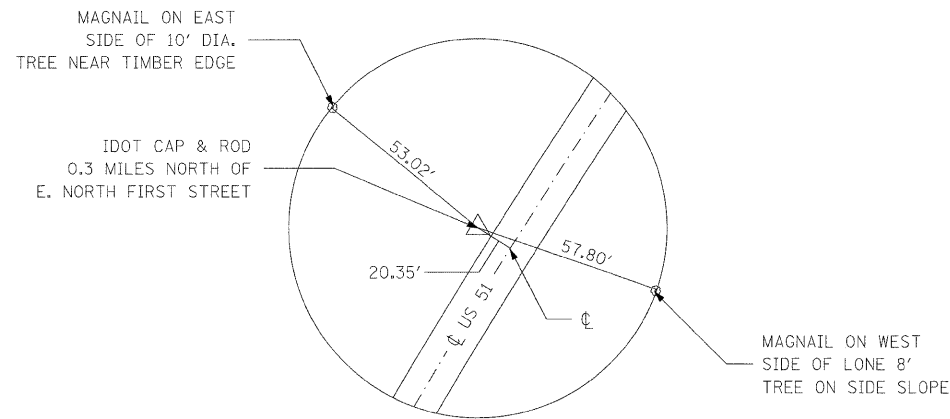
CONTROL POINT 52

STATION ± 16+94 (PROPOSED SERVICE RD)
OFFSET 8' LEFT
N. 628,245.9767 E. 581,801.2824



CONTROL POINT 53

STATION ± 342+27 (US 51)
OFFSET 0' LEFT
N. 628,230.7000 E. 581, 433.7718



CONTROL POINT 54

STATION ± 331+13 (US 51)
OFFSET 21' LEFT
N. 627,395.5484 E. 580,697.9272

NOTES:
NOT TO SCALE.
ALL TIES ARE PULLED DIRECT.

FILE NAME =	USER NAME = tharp1	DESIGNED - R. THARP	REVISED -	STATE OF ILLINOIS DEPARTMENT OF TRANSPORTATION	ALIGNMENT, TIES & BENCHMARKS			DR&SBI	SECTION	COUNTY	TOTAL SHEETS	SHEET NO.	
ca:\pw\work\p\idot\tharp1\dms52424\d876	32-ATB.dgn	DRAWN - R. THARP	REVISED -		SCALE:	SHEET NO. 1 OF 2 SHEETS	STA.	TO STA.	322&2	95-AC & 32B-I	WASHINGTON	63	12
		CHECKED - A. MUEHLFELD	REVISED -		CONTRACT NO. 76132								
		DATE - 12/3/2009	REVISED -		ILLINOIS FED. AID PROJECT								