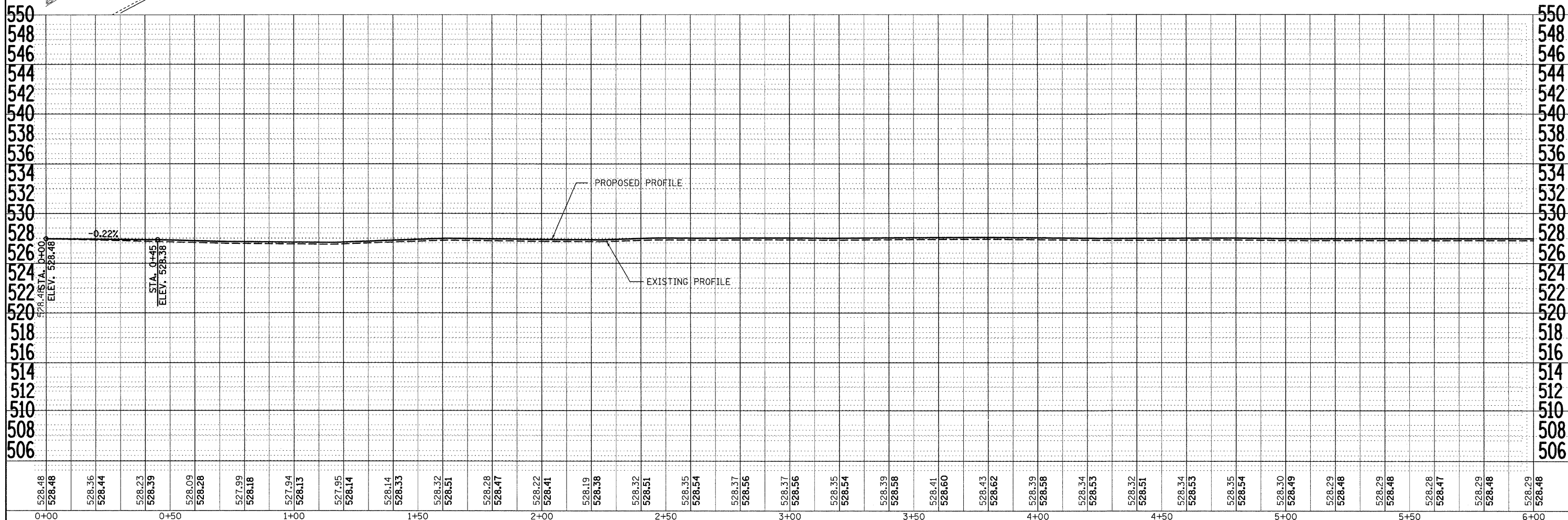
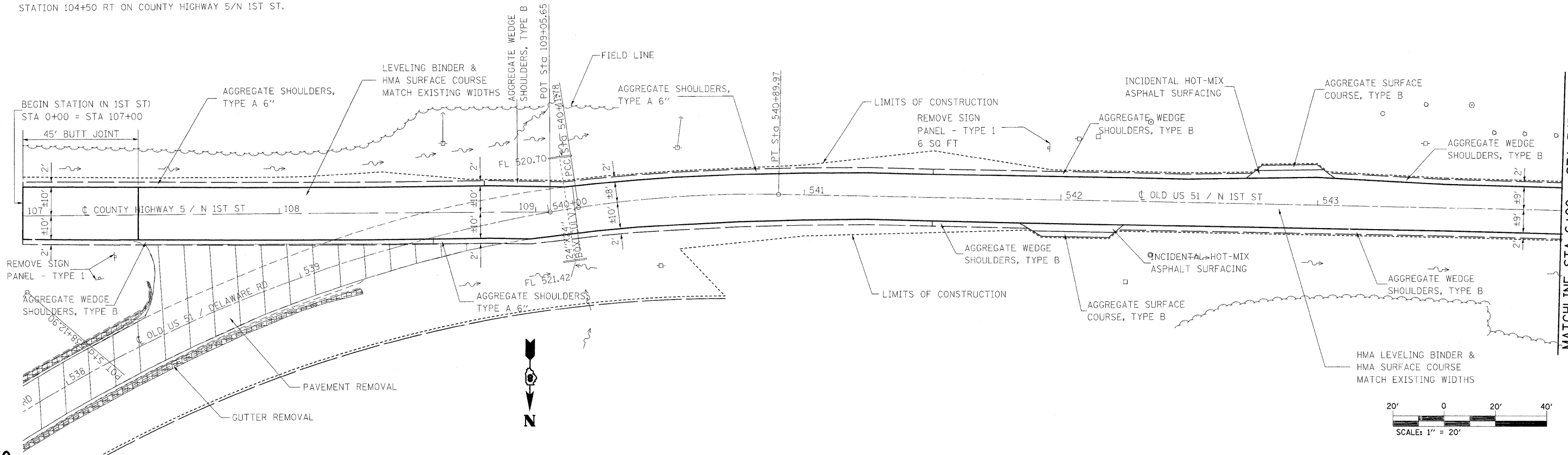


NOTE: REMOVE SIGN PANEL - TYPE 1 (6.25 SQ FT) AT APPROXIMATE STATION 104+50 RT ON COUNTY HIGHWAY 5/N 1ST ST.



DATE	
BY	
REVISIONS	
NO.	
DATE	
BY	
REVISIONS	
NO.	
DATE	
BY	
REVISIONS	
NO.	
DATE	
BY	
REVISIONS	
NO.	
DATE	
BY	
REVISIONS	
NO.	

DATE	
BY	
REVISIONS	
NO.	
DATE	
BY	
REVISIONS	
NO.	
DATE	
BY	
REVISIONS	
NO.	
DATE	
BY	
REVISIONS	
NO.	

FILE NAME =	USER NAME = tharp1	DESIGNED -	REVISED -	STATE OF ILLINOIS DEPARTMENT OF TRANSPORTATION	PLAN AND PROFILE SHEETS	OR&S/RTI 322&2	SECTION	COUNTY	TOTAL SHEETS	SHEET NO.
c:\pw_work\PW\DOT\THARP\PL\ms52424\087612-sht-plnprf-n1st1.dgn	2-sht-plnprf-n1st1.dgn	DRAWN -	REVISED -				95-AC & 32B-1	WASHINGTON	63	21
PLOT SCALE = 20.0000' / IN.	PLOT DATE = 12/10/2009	CHECKED -	REVISED -				CONTRACT NO. 76132			
		DATE -	REVISED -				ILLINOIS FED. AID PROJECT			

SCALE: SHEET NO. 8 OF 9 SHEETS STA. 0+00 TO STA. 6+00