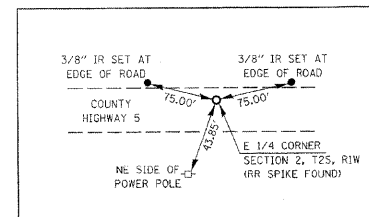
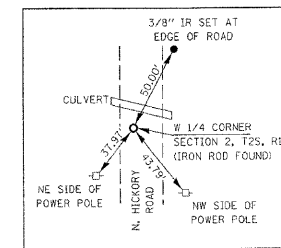
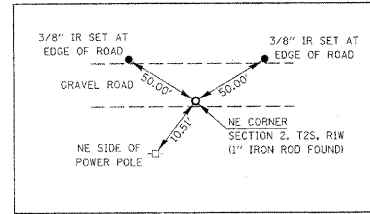
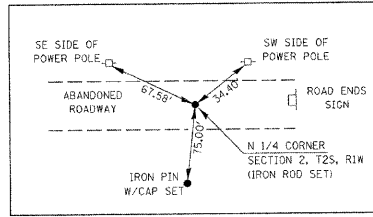


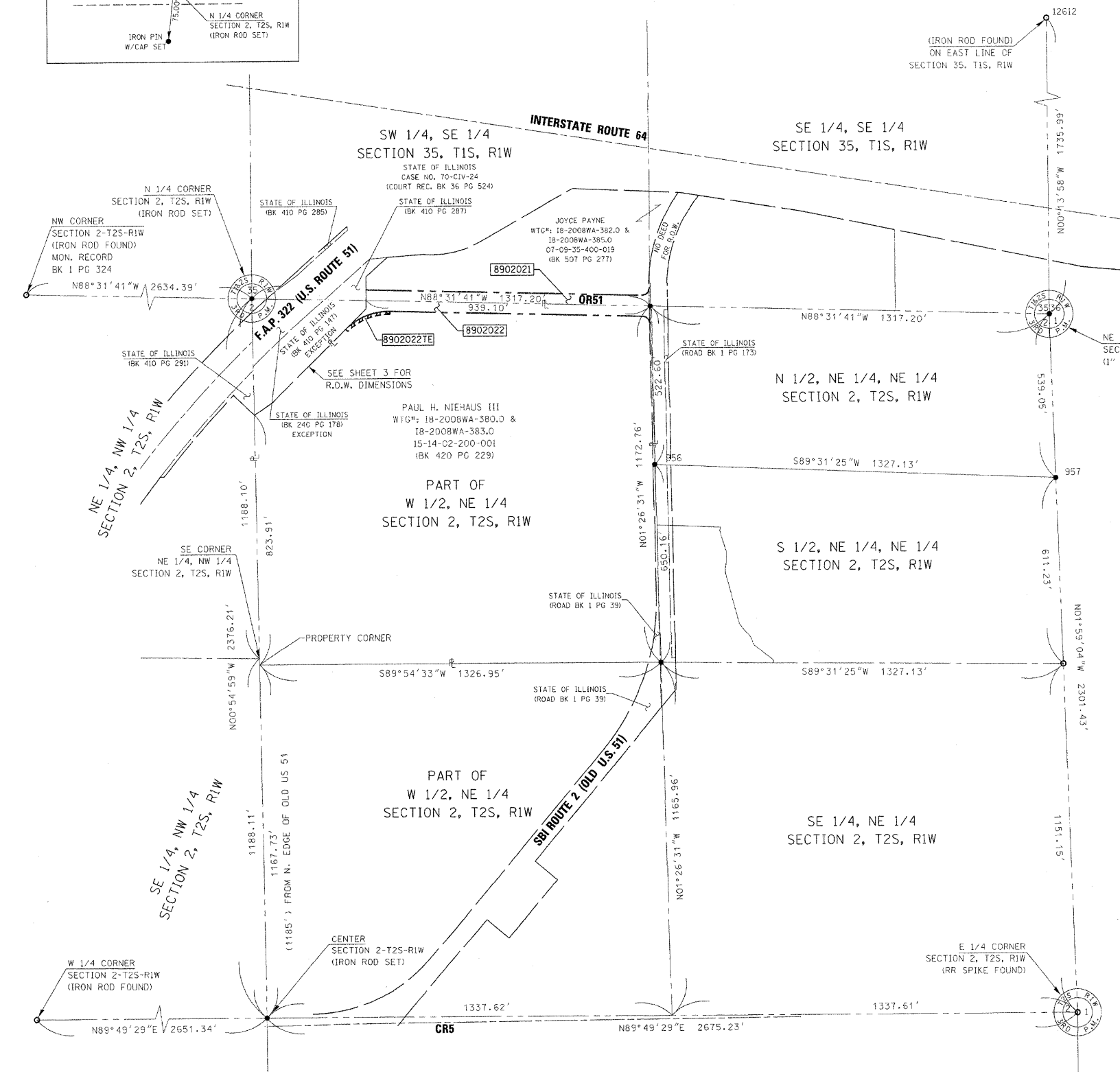
TOTAL HOLDING SKETCH
PARCEL 8902022



SPACE RESERVED FOR RECORDING OFFICER



COORDINATE TABLE				
(PNT #)/DESCRIPTION	STATION	OFFSET	NORTH	EAST
IRF - W 1/4 CORNER SECTION 2			625,867.0740	578,686.2840
IRF - NW CORNER SECTION 2			628,318.7520	578,666.1200
1" IRF - NE CORNER SECTION 2			628,183.4220	583,933.1340
RR SPIKE FOUND E 1/4 CORNER SECTION 2			625,883.3730	584,012.8290
IR SET CENTER SECT. 2			625,873.4881	581,327.0905
IR SET - N 1/4 CORN. SECTION 2			628,251.0870	581,299.6270
IR SET - NE CORN. W 1/2, NE 1/4 SECTION 2	25+09.06	4.37 RT	628,217.2566	582,616.3726
IRF - SE CORN. NE 1/4, NE 1/4 SECTION 2			627,033.8337	583,972.9654
IR SET - SE CORN. NW 1/4, NE 1/4 SECTION 2			627,044.8701	582,645.8817
(12612) IRF			629,919.4023	583,926.0802
(956) IR SET			627,694.8175	582,629.5285
(957) IR SET			627,644.6966	583,951.8004



STATE OF ILLINOIS)
) SS
 COUNTY OF WASHINGTON)

I, GARY S. MUELLER, AN ILLINOIS PROFESSIONAL LAND SURVEYOR, CERTIFY THAT I HAVE SURVEYED THE PLAT OF HIGHWAY SHOWN HEREON AND THAT THIS PROFESSIONAL SERVICE CONFORMS TO THE CURRENT ILLINOIS MINIMUM STANDARDS FOR A BOUNDARY SURVEY FOR THE PROPOSED PARCEL(S) TO BE ACQUIRED BY THE STATE OF ILLINOIS, DEPARTMENT OF TRANSPORTATION, SHOWN HEREON.

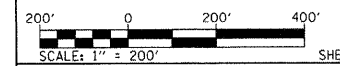
DATED 6/29/2009

GARY S. MUELLER, PLS NO. 3332
 LICENSE EXPIRATION DATE: 11/30/2010



ASSOCIATED PROFESSIONALS, INC.
 17825 Mockingbird Road, P.O. Box 311
 Nashville, Illinois 62263
 Ph. 618-478-9000 Fax 618-478-9001
 e-mail: api@apisurvey.com
 IDPR Design Firm License No. 184-001303

ILLINOIS DEPARTMENT OF TRANSPORTATION
TOTAL HOLDING SKETCH
 SBI ROUTE 2
 (OLD US 51-DELAWARE ROAD)
 SECTION 32B-1
 WASHINGTON COUNTY
 JOB NO. R-98-002-09



ILLINOIS DEPARTMENT OF TRANSPORTATION
 DIVISION OF HIGHWAYS/REGION 5/DISTRICT 8
 1102 EASTPORT PLAZA DRIVE
 COLLINGSVILLE, ILLINOIS 62234-6198

S.B.I. RTE.	SECTION	COUNTY	TOTAL SHEETS	SHEET NO.
2	32B-1	WASHINGTON	63	35

COMPLETION DATE OF FIELD WORK PERFORMED		CONTRACT NO. 76132	
LAND SURVEY: 12/11/2008	ROW STAKING:		