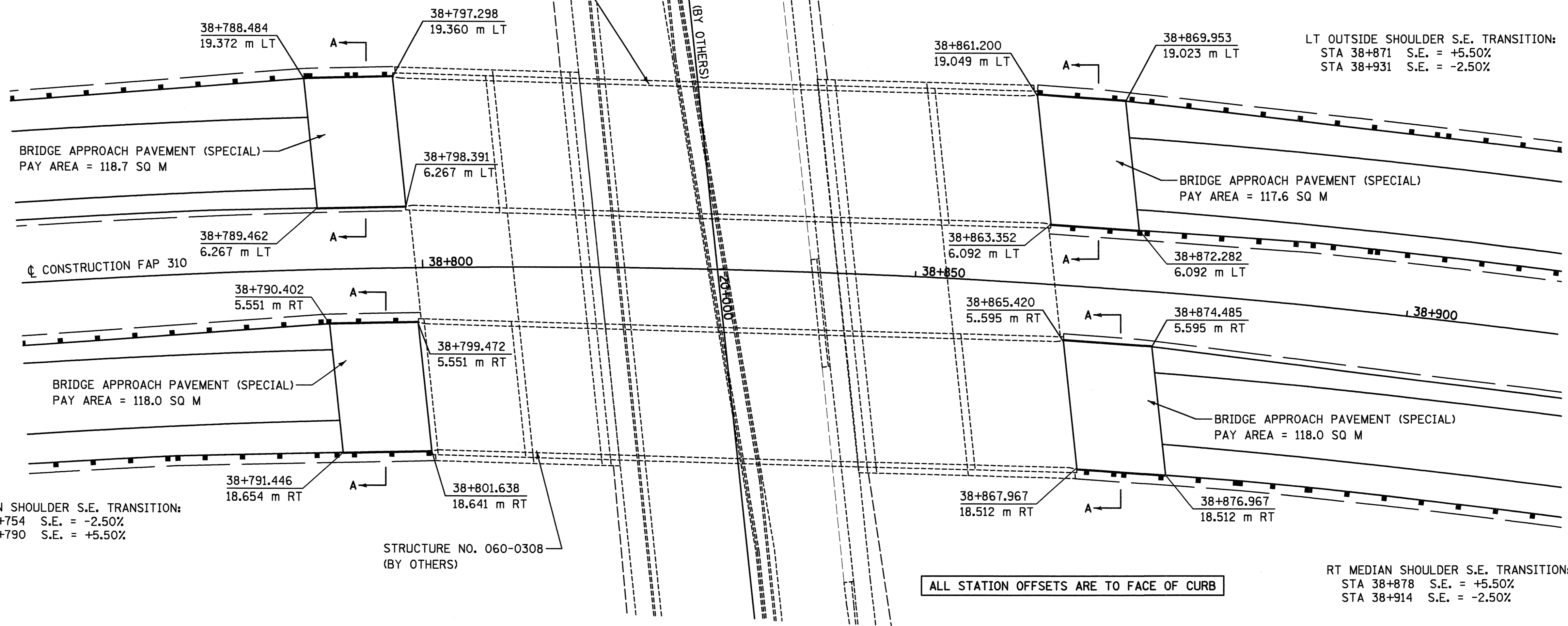


6/28/2007

F.A.P. RTE.	SECTION	COUNTY	TOTAL SHEETS	SHEET NO.
310	60-15, 60-15B	MADISON	474	261
STA.		TO STA.		
FED. ROAD DIST. NO.		ILLINOIS FED. AID PROJECT		
CONTRACT NO. 76323				

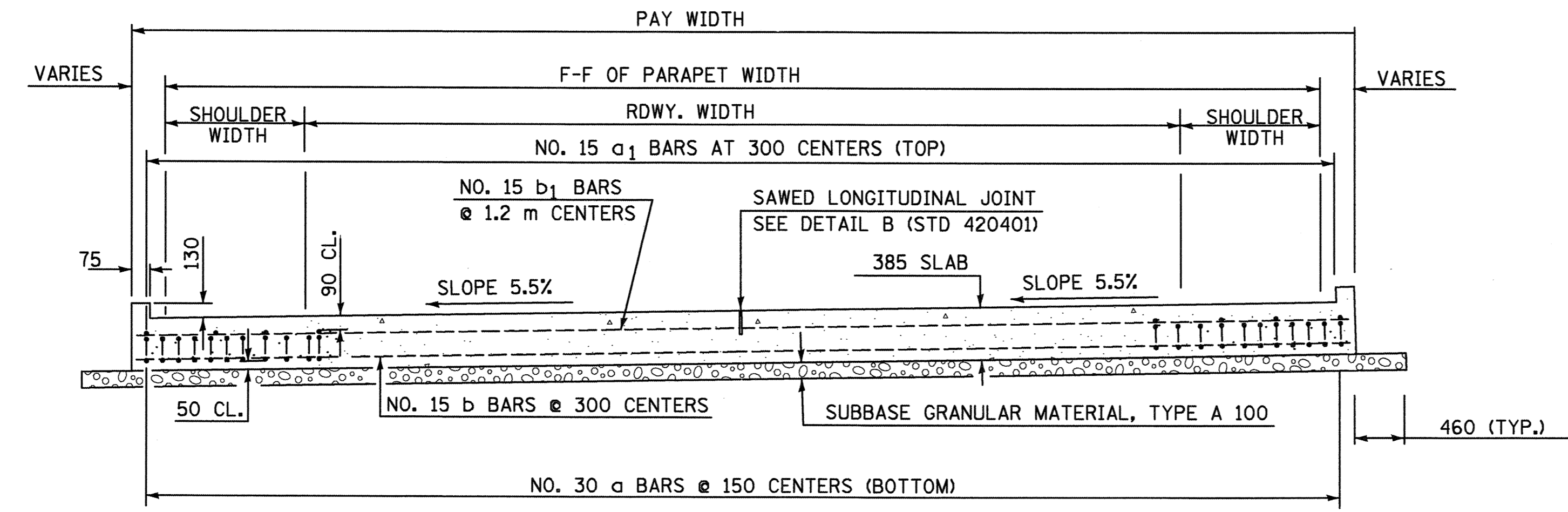
LT OUTSIDE SHOULDER S.E. TRANSITION:
 STA 38+728 S.E. = -2.50%
 STA 38+788 S.E. = +5.50%



RT MEDIAN SHOULDER S.E. TRANSITION:
 STA 38+754 S.E. = -2.50%
 STA 38+790 S.E. = +5.50%

RT MEDIAN SHOULDER S.E. TRANSITION:
 STA 38+878 S.E. = +5.50%
 STA 38+914 S.E. = -2.50%

ALL STATION OFFSETS ARE TO FACE OF CURB



SECTION A-A

(SEE PLAN FOR DIMENSIONS NOT SHOWN)
 ALL REINFORCEMENT BARS SHALL BE EPOXY COATED.

SEE STANDARD 420401 FOR DETAILS NOT SHOWN
 AND BRIDGE APPROACH PAVEMENT
 DETAIL SHEETS

REVISIONS		ILLINOIS DEPARTMENT OF TRANSPORTATION BRIDGE APPROACH PAVEMENT (SPECIAL) DETAILS FAP 310 (IL 255) SECTION 60-15 MADISON COUNTY DRAWN BY SEB CHECKED BY
NAME	DATE	

Rev. 2-16-10

p:\00files\00024\mainline\detail\msc\bridgeapp01.dgn