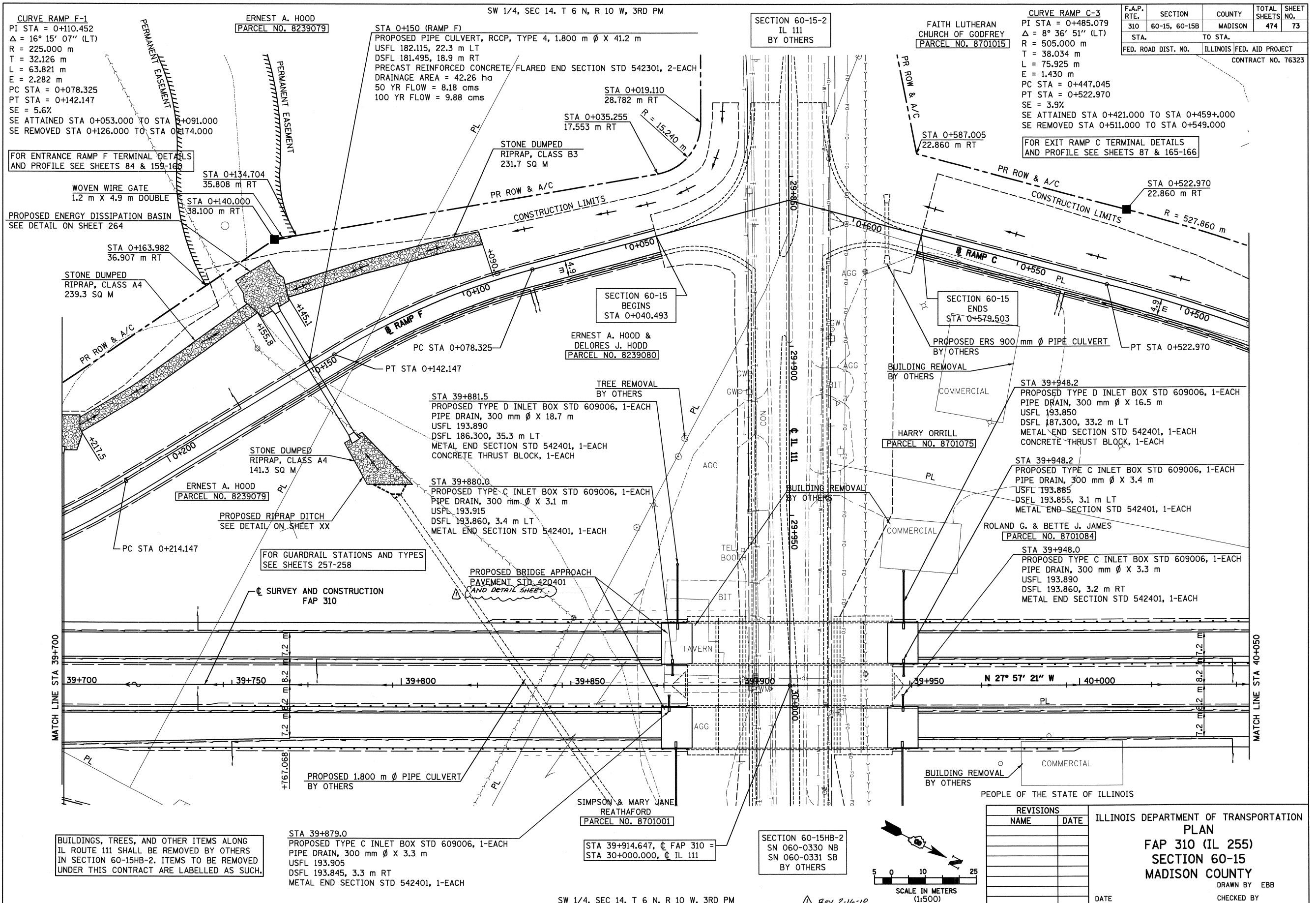


6/28/2007

p:\00f\iles\0024\dmami\line\plan\prof\iles\plan\015a14.dgn



CURVE RAMP F-1
 PI STA = 0+110.452
 $\Delta = 16^\circ 15' 07''$ (LT)
 R = 225.000 m
 T = 32.126 m
 L = 63.821 m
 E = 2.282 m
 PC STA = 0+078.325
 PT STA = 0+142.147
 SE = 5.6%
 SE ATTAINED STA 0+053.000 TO STA 0+091.000
 SE REMOVED STA 0+126.000 TO STA 0+174.000

FOR ENTRANCE RAMP F TERMINAL DETAILS
 AND PROFILE SEE SHEETS 84 & 159-160

WOVEN WIRE GATE
 1.2 m X 4.9 m DOUBLE
 PROPOSED ENERGY DISSIPATION BASIN
 SEE DETAIL ON SHEET 264

STA 0+163.982
 36.907 m RT

STONE DUMPED
 RIPRAP, CLASS A4
 239.3 SQ M

PR ROW & A/C
 STA 0+134.704
 35.808 m RT
 STA 0+140.000
 38.100 m RT

ERNEST A. HOOD
 [PARCEL NO. 8239079]

STONE DUMPED
 RIPRAP, CLASS A4
 141.3 SQ M

ERNEST A. HOOD &
 DELORES J. HOOD
 [PARCEL NO. 8239080]

PROPOSED RIPRAP DITCH
 SEE DETAIL ON SHEET XX

FOR GUARDRAIL STATIONS AND TYPES
 SEE SHEETS 257-258

PC STA 0+214.147

PROPOSED 1.800 m ϕ PIPE CULVERT
 BY OTHERS

BUILDINGS, TREES, AND OTHER ITEMS ALONG
 IL ROUTE 111 SHALL BE REMOVED BY OTHERS
 IN SECTION 60-15HB-2. ITEMS TO BE REMOVED
 UNDER THIS CONTRACT ARE LABELLED AS SUCH.

SW 1/4, SEC 14. T 6 N, R 10 W, 3RD PM
 ERNEST A. HOOD
 [PARCEL NO. 8239079]
 STA 0+150 (RAMP F)
 PROPOSED PIPE CULVERT, RCCP, TYPE 4, 1.800 m ϕ X 41.2 m
 USFL 182.115, 22.3 m LT
 DSFL 181.495, 18.9 m RT
 PRECAST REINFORCED CONCRETE FLARED END SECTION STD 542301, 2-EACH
 DRAINAGE AREA = 42.26 ha
 50 YR FLOW = 8.18 cms
 100 YR FLOW = 9.88 cms

STONE DUMPED
 RIPRAP, CLASS B3
 231.7 SQ M

PR ROW & A/C
 STA 0+019.110
 28.782 m RT
 STA 0+035.255
 17.553 m RT
 R = 15.240 m

SECTION 60-15
 BEGINS
 STA 0+040.493

ERNEST A. HOOD &
 DELORES J. HOOD
 [PARCEL NO. 8239080]

TREE REMOVAL
 BY OTHERS

STA 39+881.5
 PROPOSED TYPE D INLET BOX STD 609006, 1-EACH
 PIPE DRAIN, 300 mm ϕ X 18.7 m
 USFL 193.890
 DSFL 186.300, 35.3 m LT
 METAL END SECTION STD 542401, 1-EACH
 CONCRETE THRUST BLOCK, 1-EACH

STA 39+880.0
 PROPOSED TYPE C INLET BOX STD 609006, 1-EACH
 PIPE DRAIN, 300 mm ϕ X 3.1 m
 USFL 193.915
 DSFL 193.860, 3.4 m LT
 METAL END SECTION STD 542401, 1-EACH

PROPOSED BRIDGE APPROACH
 PAVEMENT STD 420401
 (SEE DETAIL SHEET XX)

SURVEY AND CONSTRUCTION
 FAP 310

TAVERN

AGG

SIMPSON & MARY JANE
 REATHAFORD
 [PARCEL NO. 8701001]

STA 39+879.0
 PROPOSED TYPE C INLET BOX STD 609006, 1-EACH
 PIPE DRAIN, 300 mm ϕ X 3.3 m
 USFL 193.905
 DSFL 193.845, 3.3 m RT
 METAL END SECTION STD 542401, 1-EACH

STA 39+914.647, ϕ FAP 310 =
 STA 30+000.000, ϕ IL 111

SECTION 60-15-2
 IL 111
 BY OTHERS

FAITH LUTHERAN
 CHURCH OF GODFREY
 [PARCEL NO. 8701015]

PR ROW & A/C
 STA 0+587.005
 22.860 m RT

PR ROW & A/C
 STA 0+522.970
 22.860 m RT
 R = 527.860 m

SECTION 60-15
 ENDS
 STA 0+579.503

PROPOSED ERS 900 mm ϕ PIPE CULVERT
 BY OTHERS

BUILDING REMOVAL
 BY OTHERS

HARRY ORRILL
 [PARCEL NO. 8701075]

COMMERCIAL

STA 39+948.2
 PROPOSED TYPE D INLET BOX STD 609006, 1-EACH
 PIPE DRAIN, 300 mm ϕ X 16.5 m
 USFL 193.850
 DSFL 187.300, 33.2 m LT
 METAL END SECTION STD 542401, 1-EACH
 CONCRETE THRUST BLOCK, 1-EACH

STA 39+948.2
 PROPOSED TYPE C INLET BOX STD 609006, 1-EACH
 PIPE DRAIN, 300 mm ϕ X 3.4 m
 USFL 193.885
 DSFL 193.855, 3.1 m LT
 METAL END SECTION STD 542401, 1-EACH

ROLAND G. & BETTE J. JAMES
 [PARCEL NO. 8701084]

STA 39+948.0
 PROPOSED TYPE C INLET BOX STD 609006, 1-EACH
 PIPE DRAIN, 300 mm ϕ X 3.3 m
 USFL 193.890
 DSFL 193.860, 3.2 m RT
 METAL END SECTION STD 542401, 1-EACH

BUILDING REMOVAL
 BY OTHERS

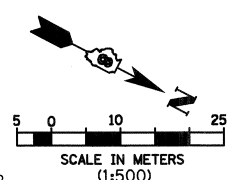
COMMERCIAL

PEOPLE OF THE STATE OF ILLINOIS

SECTION 60-15HB-2
 SN 060-0330 NB
 SN 060-0331 SB
 BY OTHERS

F.A.P. RTE.	SECTION	COUNTY	TOTAL SHEETS	SHEET NO.
310	60-15, 60-15B	MADISON	474	73
STA.		TO STA.		
FED. ROAD DIST. NO.		ILLINOIS FED. AID PROJECT		
CONTRACT NO. 76323				

REVISIONS	
NAME	DATE



ILLINOIS DEPARTMENT OF TRANSPORTATION
 PLAN
 FAP 310 (IL 255)
 SECTION 60-15
 MADISON COUNTY
 DRAWN BY EBB
 CHECKED BY
 DATE

SW 1/4, SEC 14. T 6 N, R 10 W, 3RD PM

Rev. 2-16-10

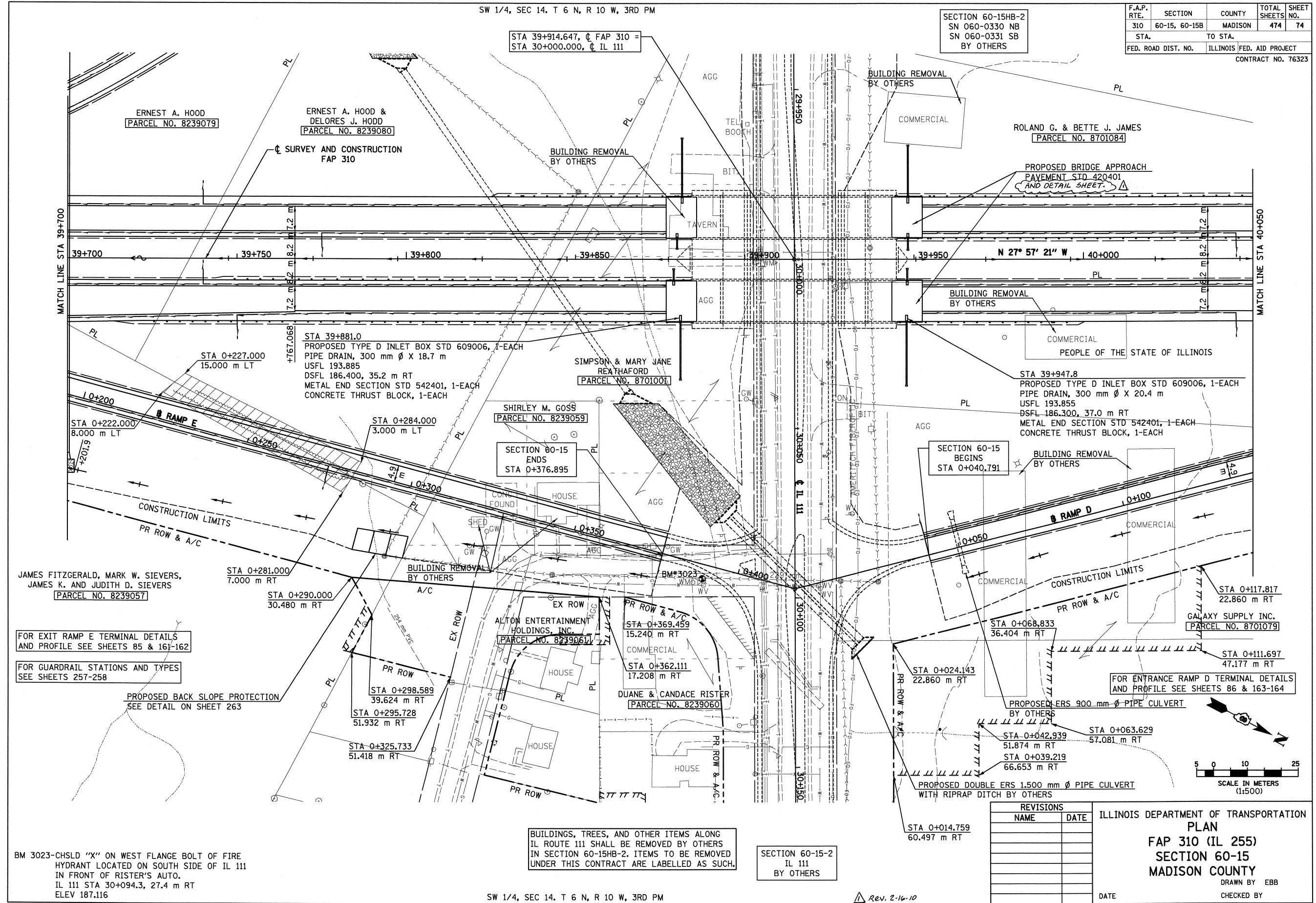
IL 255 (FAP 310), STA 39+700 TO STA 40+050

6/28/2007

SW 1/4, SEC 14, T 6 N, R 10 W, 3RD PM

SECTION 60-15HB-2
SN 060-0330 NB
SN 060-0331 SB
BY OTHERS

F.A.P. RTE.	SECTION	COUNTY	TOTAL SHEETS	SHEET NO.
310	60-15, 60-15B	MADISON	474	74
STA.		TO STA.		
FED. ROAD DIST. NO.		ILLINOIS	FED. AID PROJECT	
CONTRACT NO. 76323				



JAMES FITZGERALD, MARK W. SIEVERS,
JAMES K. AND JUDITH D. SIEVERS
[PARCEL NO. 8239057]

FOR EXIT RAMP E TERMINAL DETAILS
AND PROFILE SEE SHEETS 85 & 161-162

FOR GUARDRAIL STATIONS AND TYPES
SEE SHEETS 257-258

PROPOSED BACK SLOPE PROTECTION
SEE DETAIL ON SHEET 263

BM 3023-CHSLD "X" ON WEST FLANGE BOLT OF FIRE
HYDRANT LOCATED ON SOUTH SIDE OF IL 111
IN FRONT OF RISTER'S AUTO.
IL 111 STA 30+094.3, 27.4 m RT
ELEV 187.116

BUILDINGS, TREES, AND OTHER ITEMS ALONG
IL ROUTE 111 SHALL BE REMOVED BY OTHERS
IN SECTION 60-15HB-2. ITEMS TO BE REMOVED
UNDER THIS CONTRACT ARE LABELLED AS SUCH.

SECTION 60-15-2
IL 111
BY OTHERS

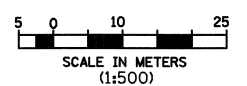
SW 1/4, SEC 14, T 6 N, R 10 W, 3RD PM

Rev. 2-16-10

REVISIONS	
NAME	DATE

ILLINOIS DEPARTMENT OF TRANSPORTATION
PLAN
FAP 310 (IL 255)
SECTION 60-15
MADISON COUNTY
DRAWN BY EBB
CHECKED BY

DATE
IL 255 (FAP 310), STA 39+700 TO STA 40+050



p:\000\files\00024\dmainline\planprof\les\plan015a14.dgn

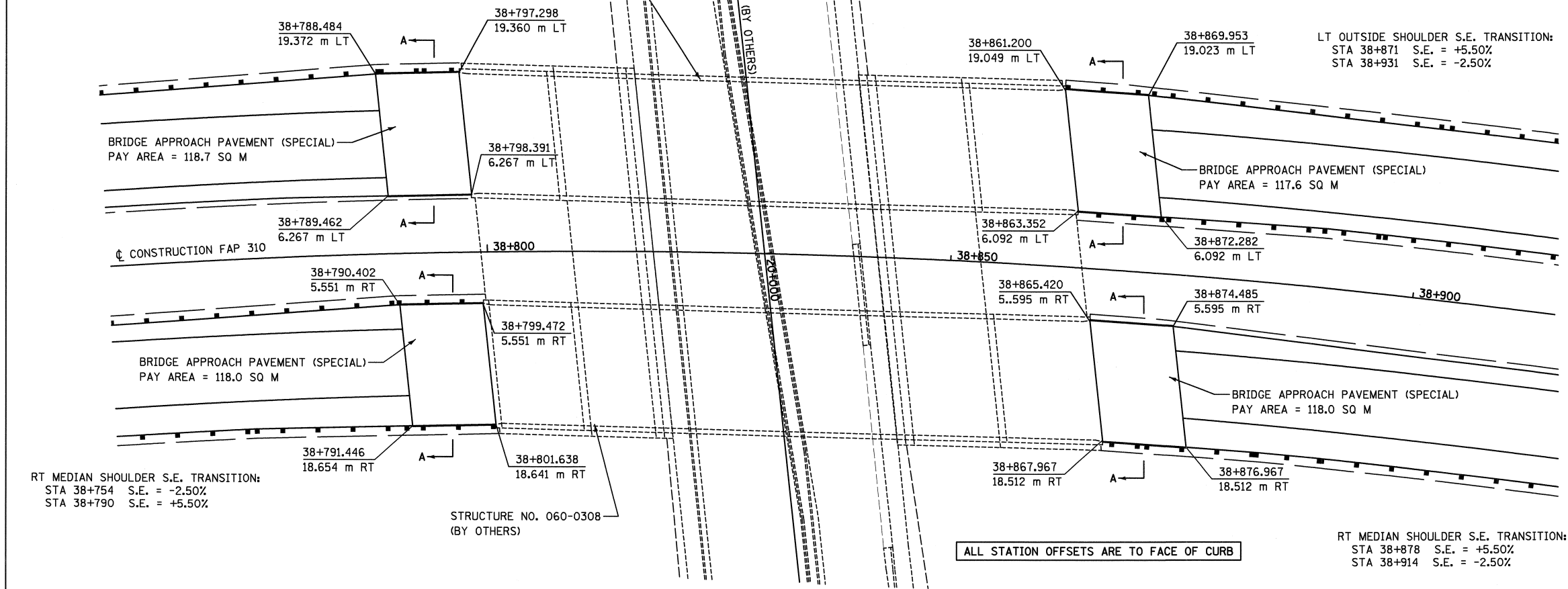
6/28/2007

p:\00files\0024\dmain\line\detail\misc\brdgeapr-01.dgn

F.A.P. RTE.	SECTION	COUNTY	TOTAL SHEETS	SHEET NO.
310	60-15, 60-15B	MADISON	474	261
STA.	TO STA.		FED. AID PROJECT	
			CONTRACT NO. 76323	

LT OUTSIDE SHOULDER S.E. TRANSITION:
 STA 38+728 S.E. = -2.50%
 STA 38+788 S.E. = +5.50%

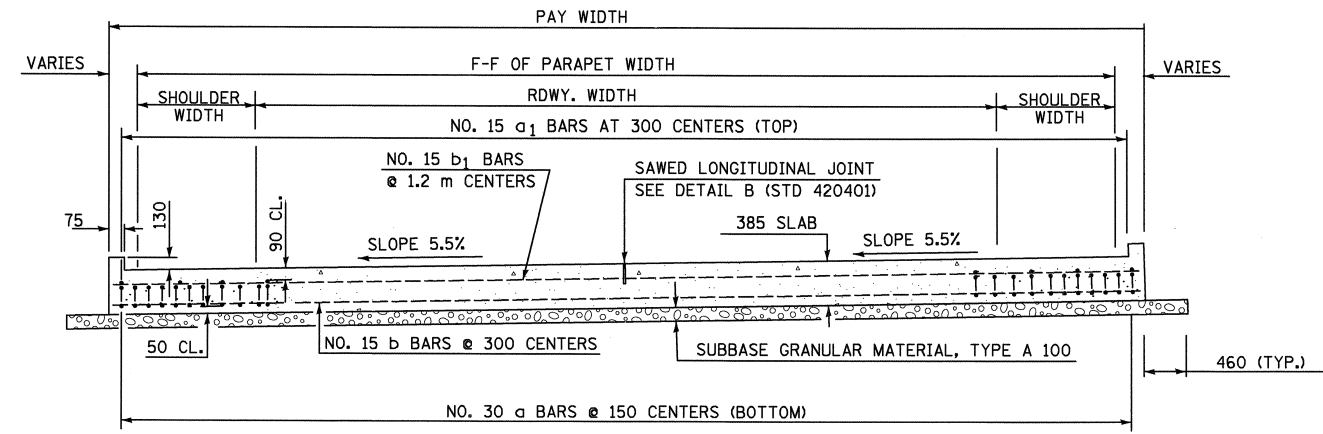
LT OUTSIDE SHOULDER S.E. TRANSITION:
 STA 38+871 S.E. = +5.50%
 STA 38+931 S.E. = -2.50%



ALL STATION OFFSETS ARE TO FACE OF CURB

RT MEDIAN SHOULDER S.E. TRANSITION:
 STA 38+754 S.E. = -2.50%
 STA 38+790 S.E. = +5.50%

RT MEDIAN SHOULDER S.E. TRANSITION:
 STA 38+878 S.E. = +5.50%
 STA 38+914 S.E. = -2.50%



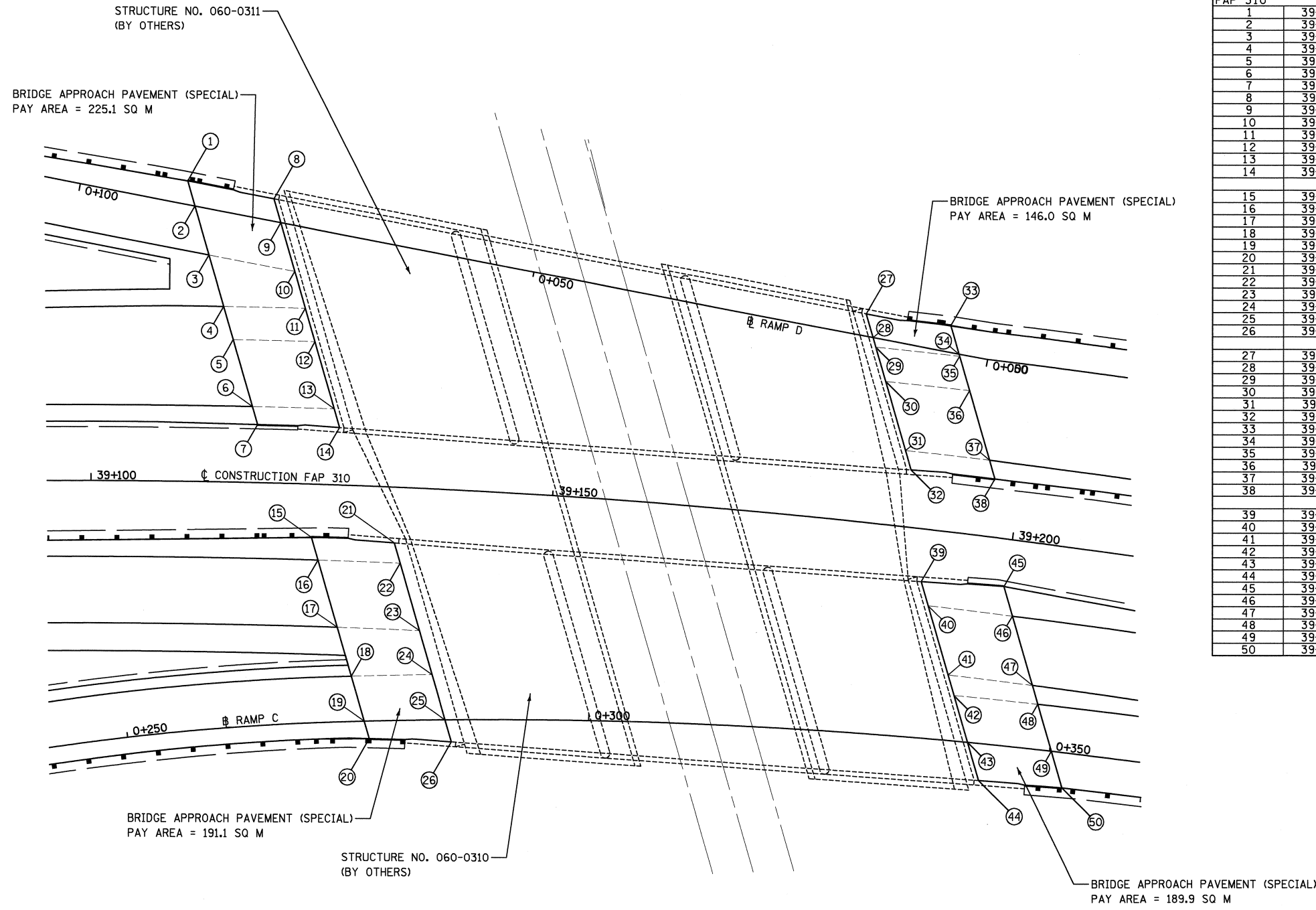
SECTION A-A
 (SEE PLAN FOR DIMENSIONS NOT SHOWN)
 ALL REINFORCEMENT BARS SHALL BE EPOXY COATED.

SEE STANDARD 420401 FOR DETAILS NOT SHOWN
 AND BRIDGE APPROACH PAVEMENT
 DETAIL SHEETS

REVISIONS		ILLINOIS DEPARTMENT OF TRANSPORTATION BRIDGE APPROACH PAVEMENT (SPECIAL) DETAILS FAP 310 (IL 255) SECTION 60-15 MADISON COUNTY DRAWN BY SEB CHECKED BY
NAME	DATE	

REV. 2-16-10

F.A.P. RTE.	SECTION	COUNTY	TOTAL SHEETS	SHEET NO.
310	60-15, 60-15B	MADISON	474	262
STA.		TO STA.		
FED. ROAD DIST. NO.		ILLINOIS FED. AID PROJECT		
CONTRACT NO. 76323				



LOCATION	STATION	OFFSET	STATION	OFFSET	ELEVATION
FAP 310					
1	39+110.096	-32.512	0+088.661	2.525	199.494
2	39+110.876	-29.801	0+087.382	0.000	199.453
3	39+112.406	-24.540	0+084.898	-4.900	199.360
4	39+114.040	-19.000	0+082.282	-10.064	199.233
5	39+115.115	-15.400	0+080.580	-13.422	199.079
6	39+117.295	-8.200	0+077.175	-20.141	198.664
7	39+117.885	-6.400	0+076.265	-21.938	198.552
8	39+119.104	-30.749	0+079.124	2.400	199.473
9	39+119.876	-28.180	0+077.907	0.000	199.416
10	39+121.468	-22.939	0+075.424	-4.900	199.285
11	39+122.678	-19.000	0+073.558	-8.584	199.153
12	39+123.796	-15.400	0+071.850	-11.953	198.998
13	39+126.063	-8.200	0+068.434	-18.696	198.579
14	39+126.700	-6.202	0+067.485	-20.568	198.463
15	39+124.023	5.756	0+270.767	-20.058	198.734
16	39+124.810	8.200	0+271.337	-17.567	198.592
17	39+127.157	15.400	0+273.111	-10.230	198.172
18	39+128.892	20.629	0+274.438	-4.900	197.886
19	39+130.509	25.437	0+275.682	0.000	197.600
20	39+131.150	27.335	0+276.178	1.925	197.488
21	39+133.063	6.021	0+279.349	-19.217	198.625
22	39+133.793	8.200	0+279.916	-16.998	198.498
23	39+136.234	15.400	0+281.826	-9.663	198.074
24	39+137.846	20.076	0+283.095	-4.900	197.864
25	39+139.526	24.886	0+284.426	0.000	197.591
26	39+140.363	27.259	0+285.092	2.417	197.456
27	39+181.744	-22.475	0+013.838	2.400	198.518
28	39+182.723	-19.980	0+012.622	0.000	198.397
29	39+183.108	-19.000	0+012.145	-0.942	198.350
30	39+184.535	-15.400	0+010.389	-4.407	198.182
31	39+187.431	-8.200	0+006.874	-11.344	197.736
32	39+188.245	-6.201	0+005.897	-13.272	197.612
33	39+190.733	-22.190	0+004.599	2.864	198.346
34	39+191.935	-19.226	0+003.148	0.000	198.206
35	39+192.027	-19.000	0+003.038	-0.218	198.196
36	39+193.501	-15.400	0+001.274	-3.699	198.025
37	39+196.493	-8.200			197.574
38	39+197.303	-6.275			197.454
39	39+190.706	5.698	0+334.624	-16.899	197.817
40	39+191.756	8.200	0+335.562	-14.366	197.660
41	39+194.822	15.400	0+338.312	-7.081	197.209
42	39+195.752	17.555	0+339.151	-4.900	197.158
43	39+197.863	22.400	0+341.063	0.000	196.852
44	39+199.602	26.341	0+342.647	3.985	196.602
45	39+199.706	5.140	0+343.293	-17.206	197.683
46	39+201.033	8.200	0+344.495	-14.114	197.490
47	39+204.202	15.400	0+347.383	-6.841	197.033
48	39+205.058	17.322	0+348.169	-4.900	196.980
49	39+207.243	22.175	0+350.179	0.000	196.670
50	39+208.952	25.924	0+351.759	3.783	196.429

SEE STANDARD 420401 FOR DETAILS NOT SHOWN
 AND BRIDGE APPROACH PAVEMENT
 DETAIL SHEETS

REVISIONS		ILLINOIS DEPARTMENT OF TRANSPORTATION BRIDGE APPROACH PAVEMENT (SPECIAL) DETAILS FAP 310 (IL 255) SECTION 60-15 MADISON COUNTY DRAWN BY EBB CHECKED BY
NAME	DATE	

Rev. 2-16-10