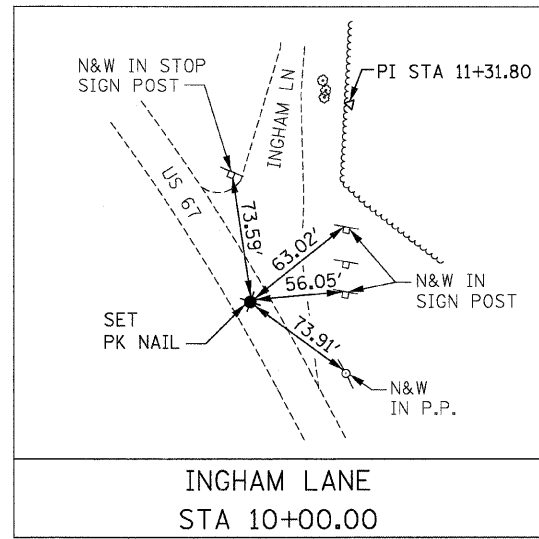
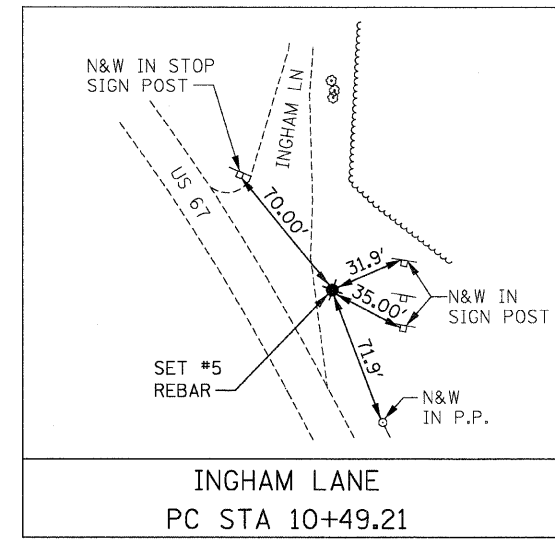


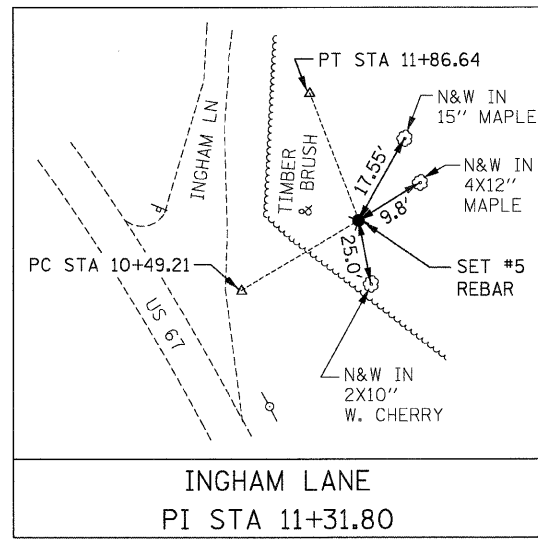
F.A.P. RTE.	SECTION	COUNTY	TOTAL SHEETS	SHEET NO.
310	60-15HB-3	MADISON	93	11
STA. TO STA.				
FED. ROAD DIST. NO.		ILLINOIS	FED. AID PROJECT	
CONTRACT NO. 76706				



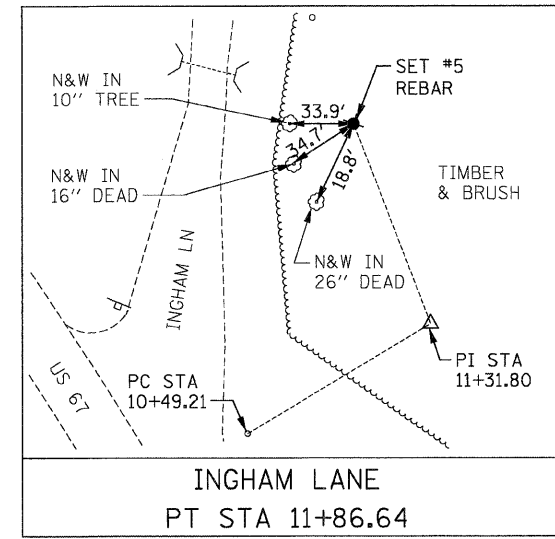
INGHAM LANE
STA 10+00.00
N 840,867.9163 E 2,288,547.3673



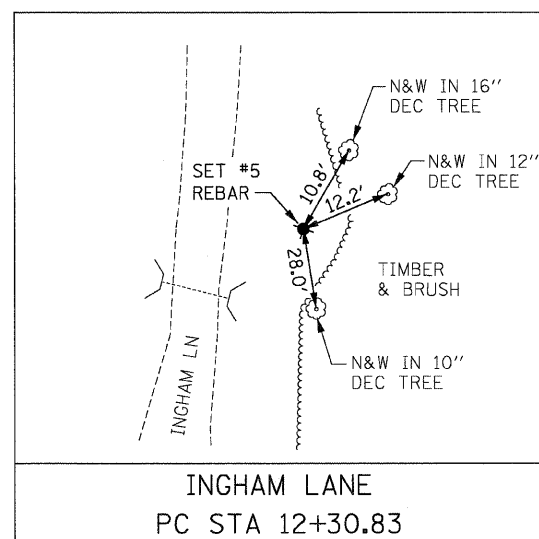
INGHAM LANE
PC STA 10+49.21
N 840,893.2818 E 2,288,589.5391



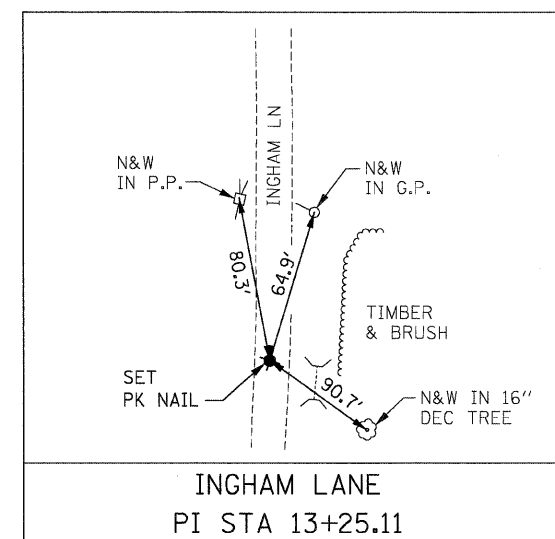
INGHAM LANE
PI STA 11+31.80
N 840,935.8503 E 2,288,660.3120



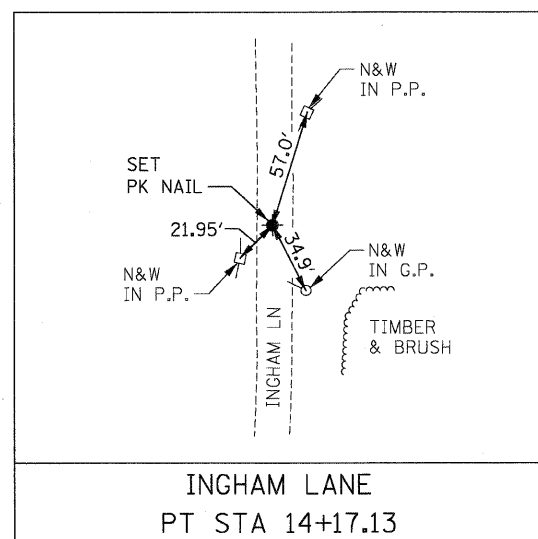
INGHAM LANE
PT STA 11+86.64
N 841,012.9399 E 2,288,630.6799



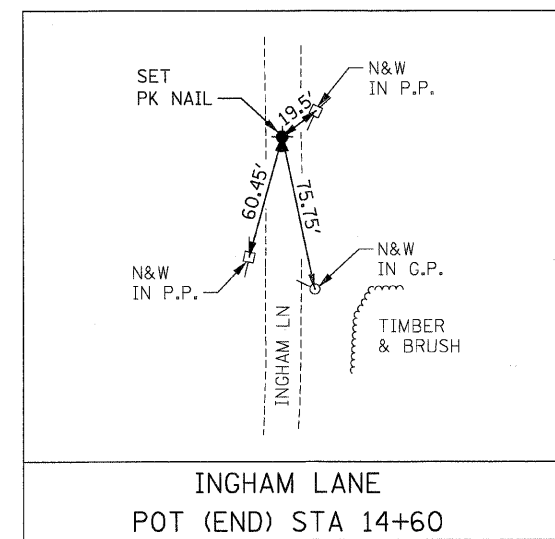
INGHAM LANE
PC STA 12+30.83
N 841,054.1868 E 2,288,614.8251



INGHAM LANE
PI STA 13+25.11
N 841,142.1882 E 2,288,580.9987



INGHAM LANE
PT STA 14+17.13
N 841,236.4605 E 2,288,582.0911



INGHAM LANE
POT (END) STA 14+60
N 841,279.3283 E 2,288,582.5879

- NOTES:
- 1) DIMENSIONS LABELED "HORIZ" ARE HORIZONTAL PULLS.
 - 2) DIMENSIONS NOT LABELED "HORIZ" ARE DIRECT PULLS.



(TYP ALL TIES THIS DWG)

REVISIONS	
NAME	DATE

ILLINOIS DEPARTMENT OF TRANSPORTATION

HORIZONTAL CONTROL TIE POINTS
FAP 310 (ILL 255)
SECTION 60-15HB-3
MADISON COUNTY

SCALE: VERT. _____ HORIZ. _____
DATE _____ DRAWN BY _____
CHECKED BY _____

P:\9971.1\as\200902A\set\viewer-bridge\road-plans\frontstages\tie\tie01b.dgn 11/20/2009