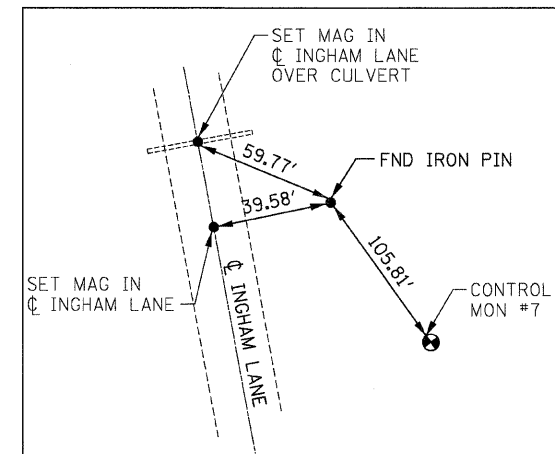
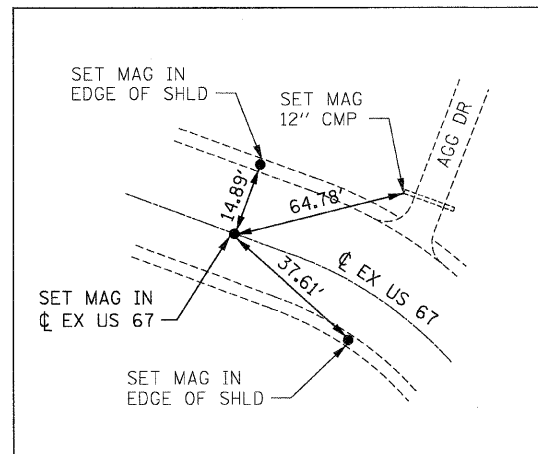


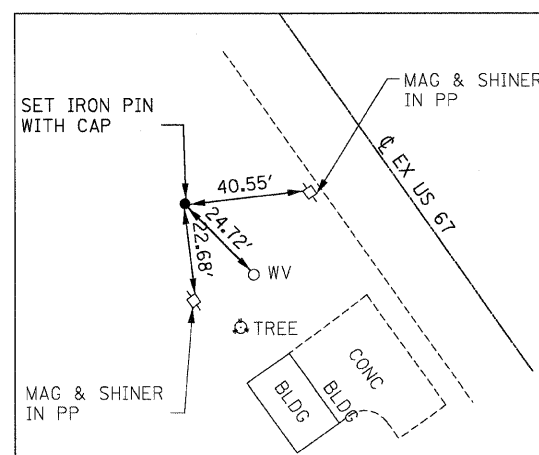
EXIST US 67  
PC STA 61+68.11  
N 840,411.4300 E 2,288,724.3186



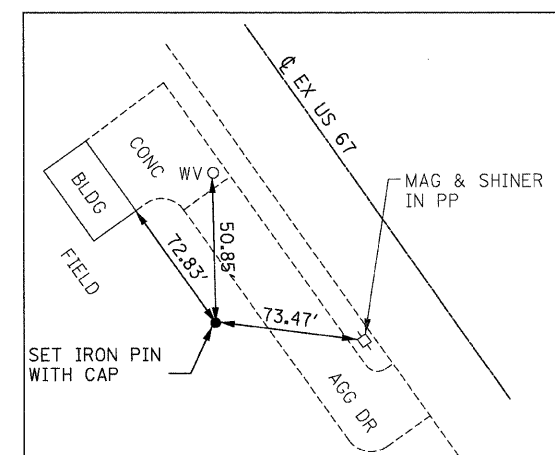
EXIST US 67  
PI STA 67+54.39  
N 840,986.2463 E 2,288,608.9334



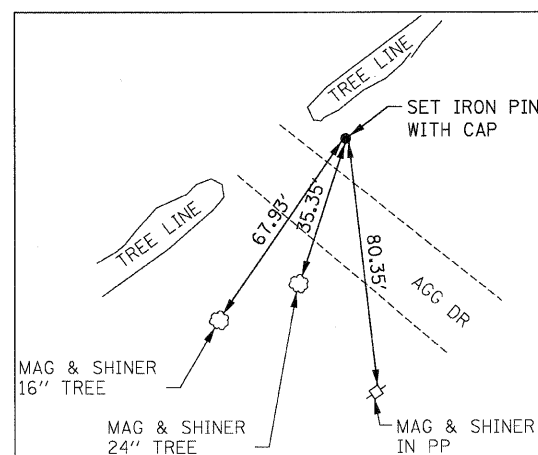
EXIST US 67  
PT STA 72+81.10  
N 841,315.2728 E 2,288,123.6818



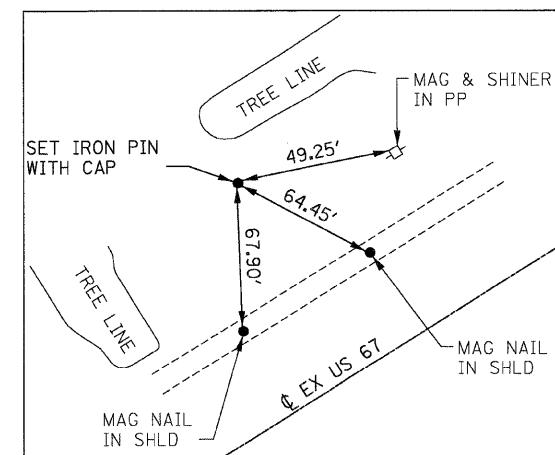
RAMP B  
PT STA 11+56.35  
N 840,205.7590 E 2,288,832.1842



RAMP B  
PC STA 12+89.52  
N 840,337.9647 E 2,288,816.2133



RAMP B  
PT STA 30+26.40  
N 841,657.3561 E 2,287,813.9962



RAMP B  
PT STA 31+90.97  
N 841,720.1954 E 2,287,661.8919

NOTES:

- 1) DIMENSIONS LABELED "HORIZ" ARE HORIZONTAL PULLS.
- 2) DIMENSIONS NOT LABELED "HORIZ" ARE DIRECT PULLS.



(TYP ALL TIES THIS DWG)

REVISIONS	
NAME	DATE

ILLINOIS DEPARTMENT OF TRANSPORTATION  
HORIZONTAL CONTROL TIE POINTS  
FAP 310 (ILL 255)  
SECTION 60-15HB-3  
MADISON COUNTY

SCALE: VERT. \_\_\_\_\_  
HORIZ. \_\_\_\_\_

DATE \_\_\_\_\_ DRAWN BY \_\_\_\_\_  
CHECKED BY \_\_\_\_\_

11/18/2008  
p:\001\env\000024\ref\11\govem-bridge\road\plans\ControlTiePoints\Ties.dgn