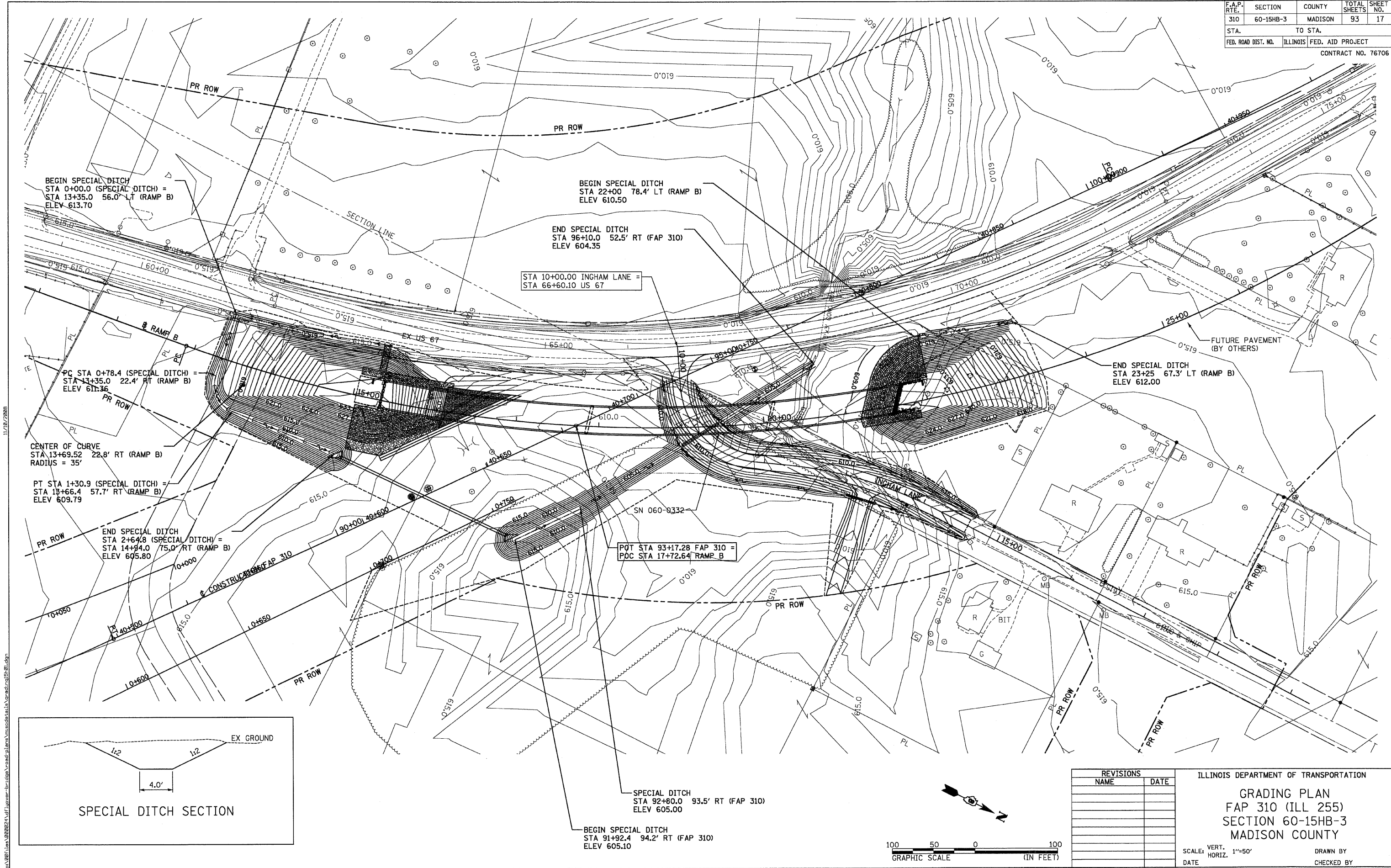


F.A.P. RTE.	SECTION	COUNTY	TOTAL SHEETS	SHEET NO.
310	60-15HB-3	MADISON	93	17
STA.		TO STA.		
FED. ROAD DIST. NO.		ILLINOIS	FED. AID PROJECT	
CONTRACT NO. 76706				



BEGIN SPECIAL DITCH
 STA 0+00.0 (SPECIAL DITCH) =
 STA 13+35.0 56.0' LT (RAMP B)
 ELEV 613.70

BEGIN SPECIAL DITCH
 STA 22+00 78.4' LT (RAMP B)
 ELEV 610.50

END SPECIAL DITCH
 STA 96+10.0 52.5' RT (FAP 310)
 ELEV 604.35

STA 10+00.00 INGHAM LANE =
 STA 66+60.10 US 67

PC STA 0+78.4 (SPECIAL DITCH) =
 STA 13+35.0 22.4' RT (RAMP B)
 ELEV 611.36

CENTER OF CURVE
 STA 13+69.52 22.8' RT (RAMP B)
 RADIUS = 35'

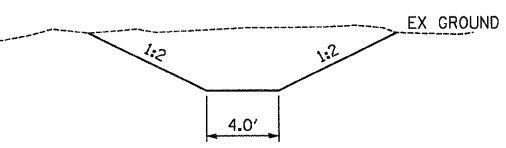
PT STA 1+30.9 (SPECIAL DITCH) =
 STA 18+66.4 57.7' RT (RAMP B)
 ELEV 609.79

END SPECIAL DITCH
 STA 2+64.8 (SPECIAL DITCH) =
 STA 14+94.0 75.0' RT (RAMP B)
 ELEV 605.80

POT STA 93+17.28 FAP 310 =
 POC STA 17+72.64 RAMP B

SPECIAL DITCH
 STA 92+80.0 93.5' RT (FAP 310)
 ELEV 605.00

BEGIN SPECIAL DITCH
 STA 91+92.4 94.2' RT (FAP 310)
 ELEV 605.10



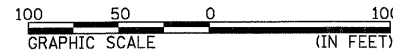
SPECIAL DITCH SECTION

REVISIONS	
NAME	DATE

ILLINOIS DEPARTMENT OF TRANSPORTATION
GRADING PLAN
 FAP 310 (ILL 255)
 SECTION 60-15HB-3
 MADISON COUNTY

SCALE: VERT. 1"=50'
 HORIZ. 1"=50'

DATE _____ DRAWN BY _____
 CHECKED BY _____



11/19/2006
 C:\Users\james\Documents\Projects\60-15HB-3\60-15HB-3-17.dwg