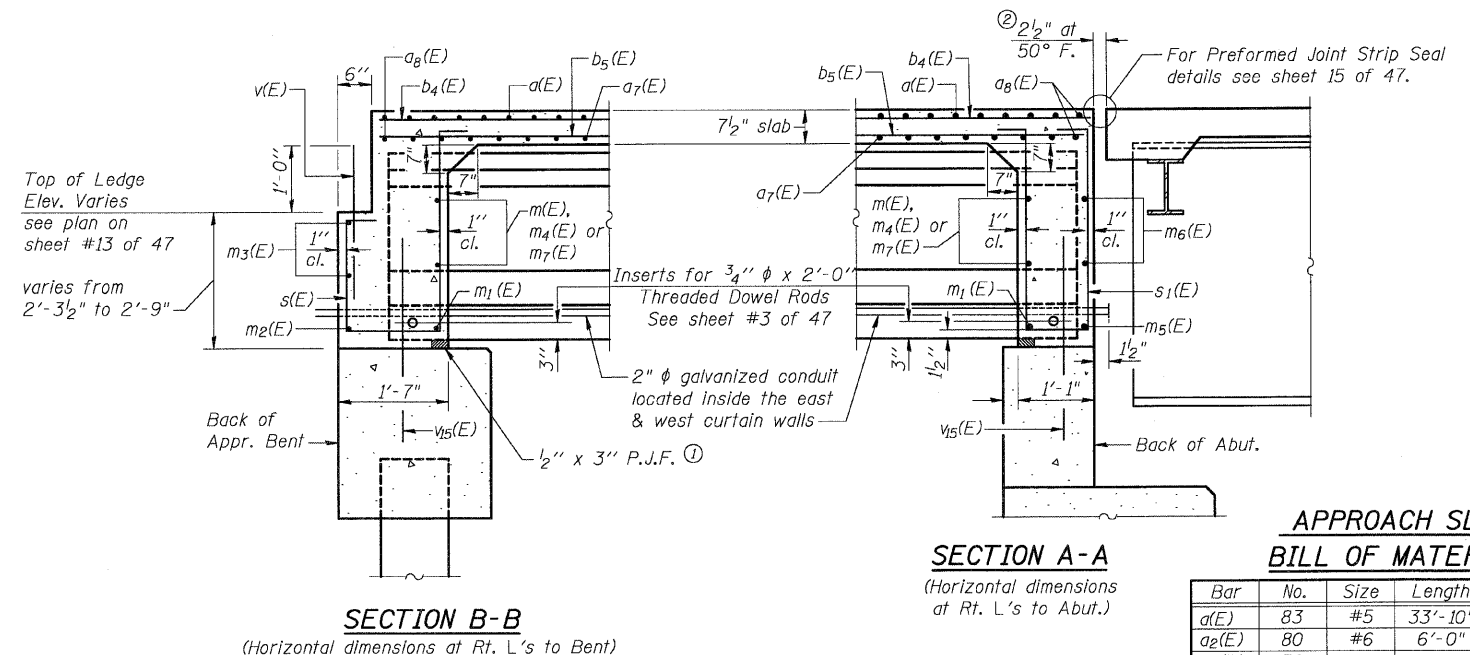
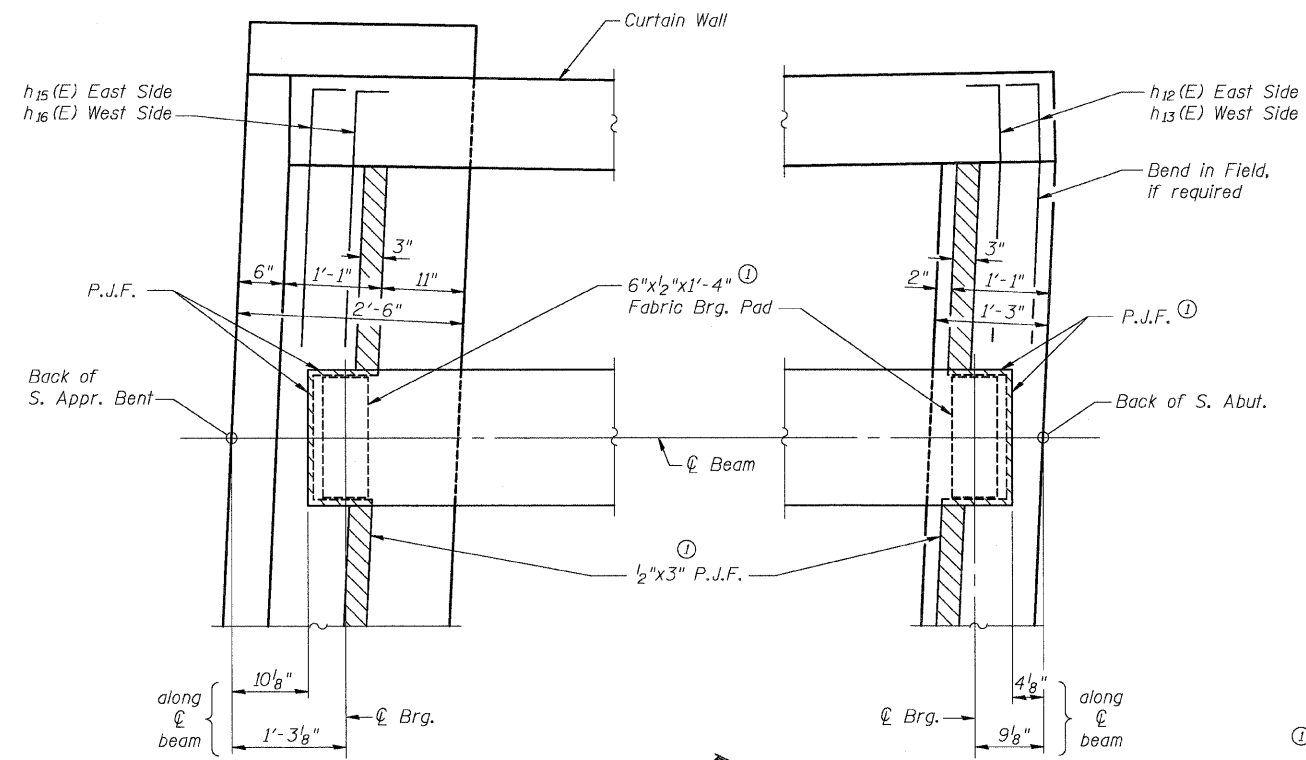


11/10/2008 4:29:43 PM

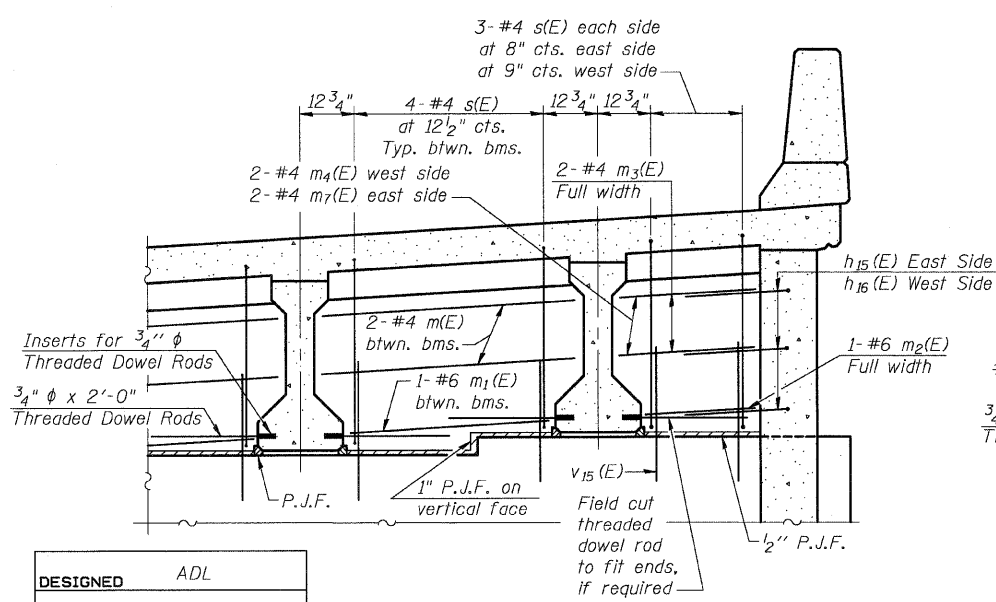
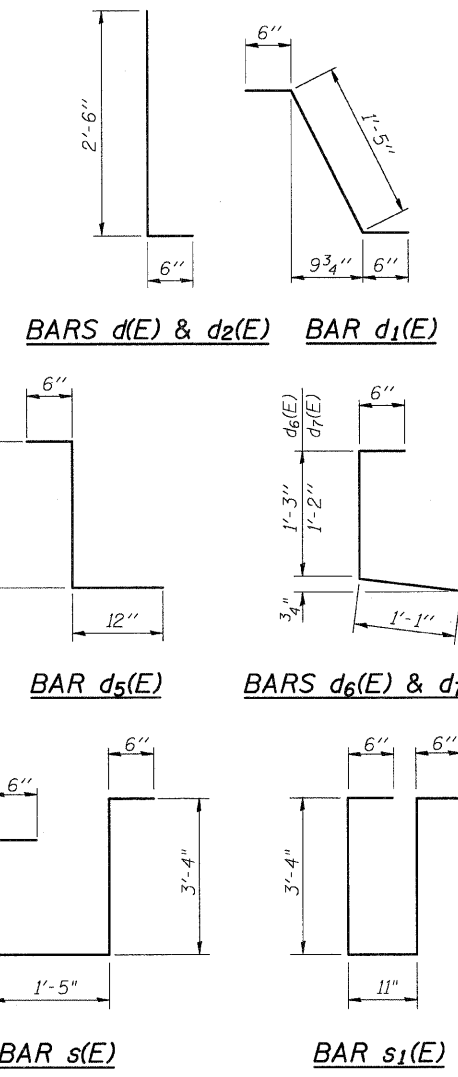
ROUTE NO.	SECTION	COUNTY	TOTAL SHEETS	SHEET NO.
60-15HB-3	*	MADISON	93	36
SHEET NO. 14				
47 SHEETS				
* 60-15HB-3 Contract No. 76706				



Notes:
 See sheets #31, #32 and #33 of 47 for $h_{12}(E)$, $h_{13}(E)$, $h_{15}(E)$, $h_{16}(E)$ and $v_{15}(E)$ bars. Work this sheet with sheet #13 of 47.
 ① Cost of P.J.F. and fabric brg. pads are included in "Concrete Superstructure"
 ② Dimensions are based on a Rolled Rail Strip Seal Joint. If the contractor elects to use the Welded Rail Strip Seal Joint, deck dimensions may require adjustments to satisfy the details on Sheet 15 of 47.

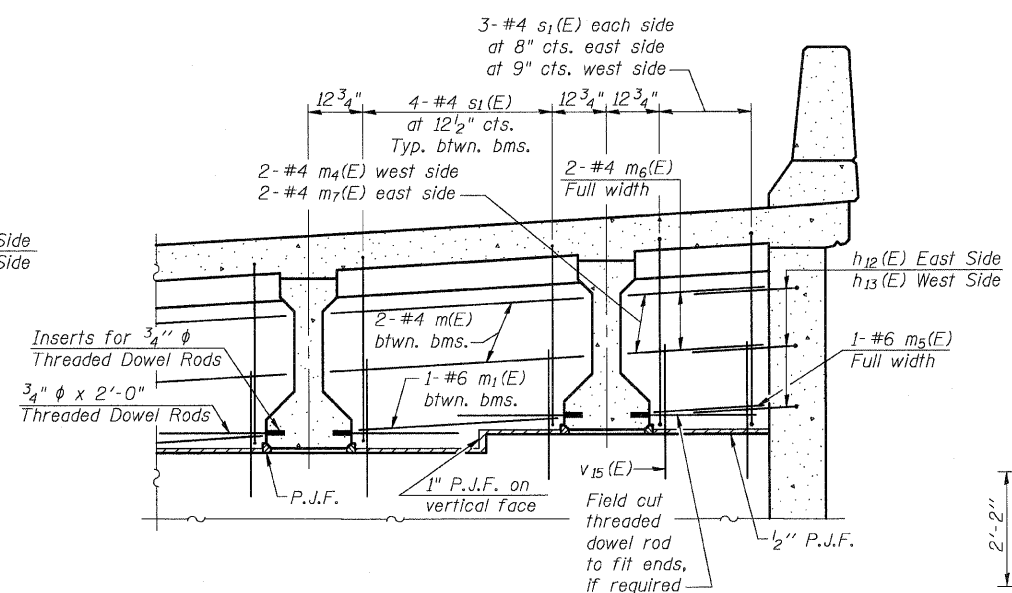
APPROACH SLAB BILL OF MATERIAL

Bar	No.	Size	Length	Shape
$a_1(E)$	83	#5	33'-10"	—
$a_2(E)$	80	#6	6'-0"	—
$a_7(E)$	70	#5	33'-4"	—
$a_8(E)$	4	#5	34'-6"	—
$b_4(E)$	76	#5	29'-8"	—
$b_5(E)$	111	#5	20'-7"	—
$d_1(E)$	126	#5	3'-0"	┌
$d_2(E)$	126	#4	3'-0"	┌
$d_5(E)$	6	#5	2'-8"	┌
$d_6(E)$	63	#4	2'-10"	┌
$d_7(E)$	63	#4	2'-9"	┌
$e_{15}(E)$	36	#4	18'-10"	—
$e_{16}(E)$	8	#8	30'-10"	—
$e_{17}(E)$	12	#5	20'-7"	—
$m(E)$	20	#4	4'-7"	—
$m_1(E)$	10	#6	3'-7"	—
$m_2(E)$	1	#6	33'-10"	—
$m_3(E)$	2	#4	33'-10"	—
$m_4(E)$	4	#4	2'-7"	—
$m_5(E)$	1	#6	31'-10"	—
$m_6(E)$	2	#4	31'-10"	—
$m_7(E)$	4	#4	2'-4"	—
$s(E)$	26	#4	7'-11"	┌
$s_1(E)$	26	#4	8'-7"	┌
$v(E)$	34	#5	2'-6"	—
Reinforcement Bars, Epoxy Coated		POUND	14,200	
Concrete Superstructure		CU YD	71.1	
Protective Coat		SQ YD	251	
Bridge Deck Grooving		SQ YD	204	



DESIGNED	ADL
CHECKED	WLW
DRAWN	BGJ
CHECKED	WLW

For location of $m(E)$, $m_1(E)$, $m_2(E)$, $m_3(E)$, $m_4(E)$ and $m_7(E)$ bars see Section B-B on this sheet. Horizontal dimensions are at Rt. L's to beams.



For location of $m(E)$, $m_1(E)$, $m_4(E)$, $m_5(E)$, $m_6(E)$ and $m_7(E)$ bars see Section A-A on this sheet. Horizontal dimensions are at Rt. L's to beams.

SOUTH APPROACH SLAB RAMP B OVER FAP RTE 310 SECTION 60-15HB-3 MADISON COUNTY STATION 17+72.64 (RAMP B) SN 060-0332