

11/10/2008 4:32:32 PM

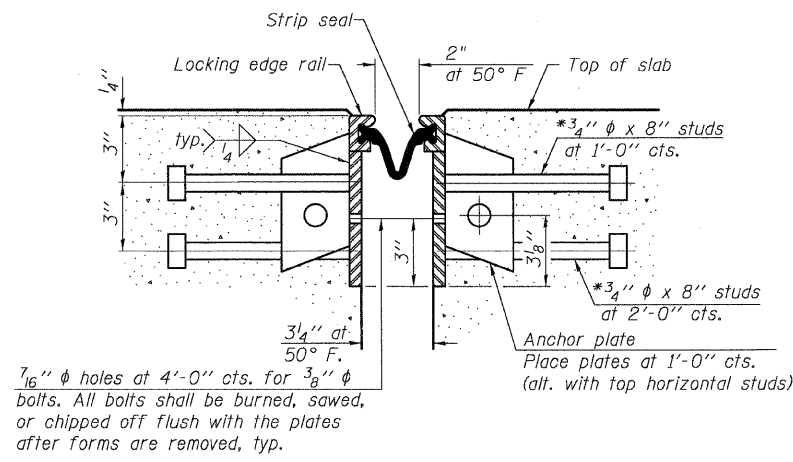
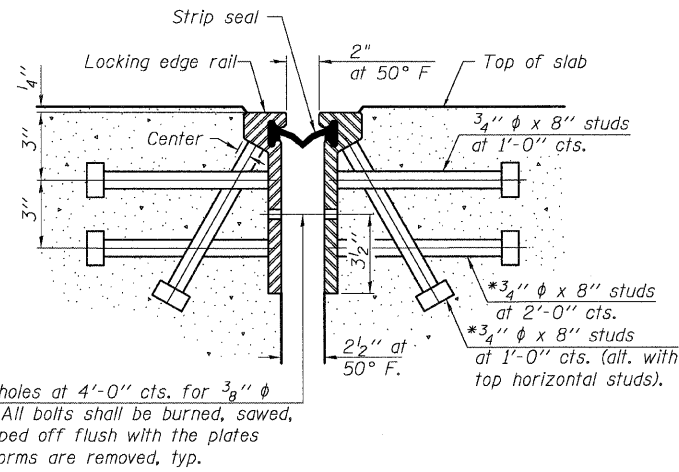
11/10/2008 4:32:32 PM

p:\001\les\000224\df\lover-bridge-plans\060332\prefomed_jt.dgn

*Granular or solid flux filled headed studs conforming to Article 1006.32 of the Std. Specs., automatically end welded.

ROUTE NO.	SECTION	COUNTY	TOTAL SHEETS	SHEET NO.	SHEET NO. 15
S.B.L.	*	MADISON	93	37	47 SHEETS
F.A.P. 308					
FED. ROAD DIST. NO. 7	ILLINOIS	FED. AID PROJECT-			

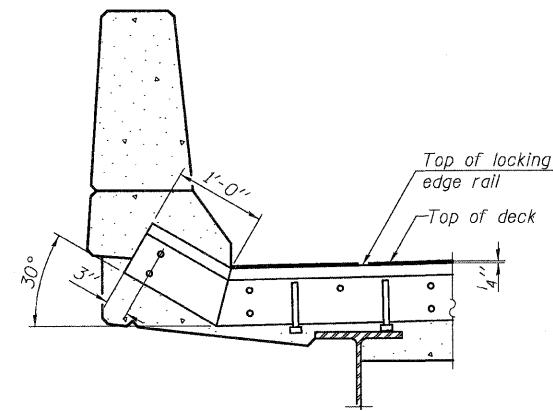
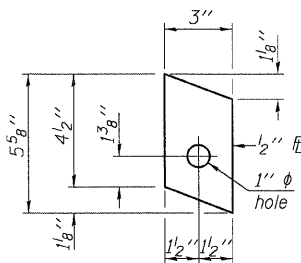
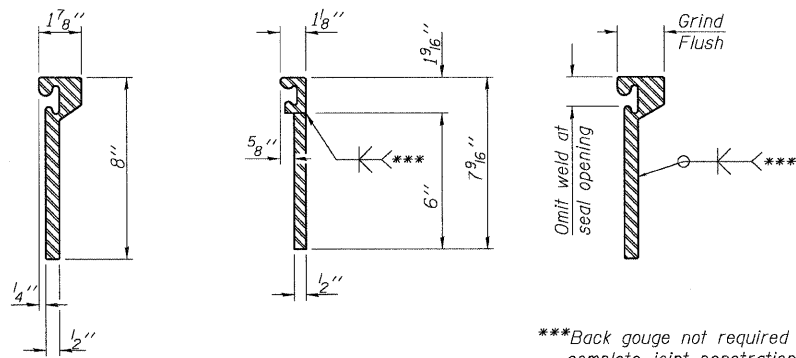
* 60-15HB-3 Contract No. 76706



Notes:
 The strip seal shall be made continuous and shall have a minimum thickness of 1/4". The configuration of the strip seal shall match the configuration of the Locking Edge Rails. Open or "webbed" strip seal gland configurations are not permitted. The gland shall be sized for a maximum rated movement of 4 inches.
 The height and thickness of the Locking Edge Rails shown are minimum dimensions. The actual configuration of the Locking Edge Rails and matching strip seal may vary from manufacturer to manufacturer. Flanged edge rails will not be allowed. Locking Edge Rails may be spliced at slope discontinuities and stage construction joints.
 The manufacturer's recommended installation methods shall be followed.
 The joint opening and deck dimensions detailed on the superstructure are based on a rolled rail expansion joint. If the Contractor elects to use the welded rail expansion joint, the opening and deck dimensions shall be modified according to the dimensions detailed on this sheet. Required modifications shall be made at no additional cost to the State.
 All steel components shall be galvanized after fabrication according to Article 520.03 of the Standard Specifications.

SECTION THRU ROLLED RAIL JOINT

SECTION THRU WELDED RAIL JOINT



AT PARAPET

TYPICAL END TREATMENT

ROLLED (EXTRUDED) RAIL WELDED RAIL

LOCKING EDGE RAIL SPLICE

The inside of the locking edge rail groove shall be free of weld residue.

***Back gouge not required if complete joint penetration is verified by mock-up.

LOCKING EDGE RAILS

BILL OF MATERIAL

Item	Unit	Total
Preformed Joint Strip Seal	Foot	34

DESIGNED	ADL
CHECKED	WLW
DRAWN	RLW
CHECKED	WLW

EJ-SSJ

9-3-07

PREFORMED JOINT STRIP SEAL
 RAMP B OVER FAP RTE 310
 SECTION 60-15HB-3
 MADISON COUNTY
 STATION 17+72.64 (RAMP B)
 SN 060-0332