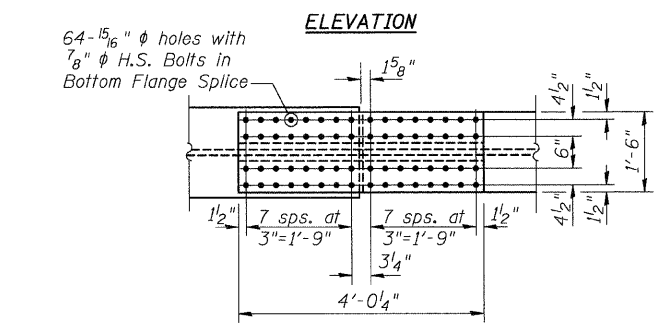
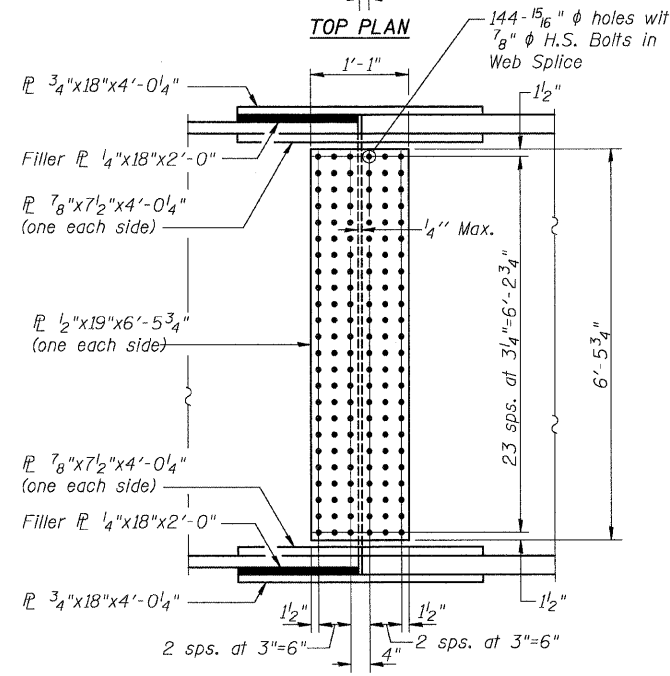
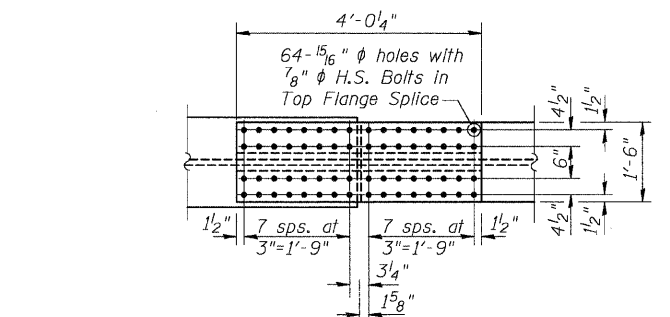


11/10/2008 4:33:55 PM

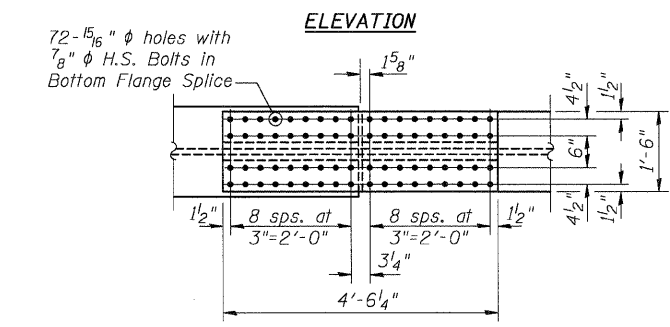
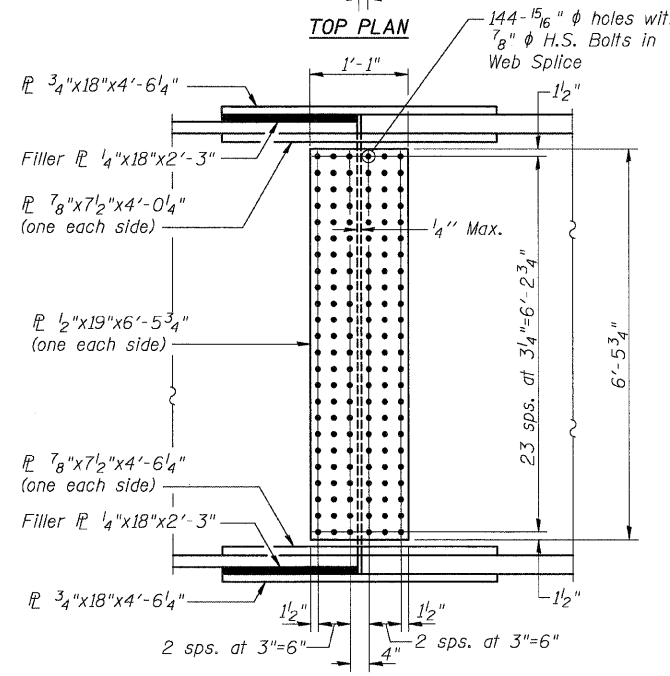
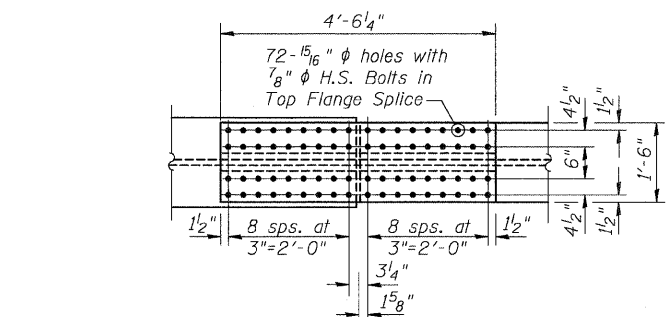
p:\001\files\000024\vf\lower-bridge\plans\0600332steel\details.dgn

ROUTE NO.	SECTION	COUNTY	SHEETS	SHEET NO.
F.A.P. 308	*	MADISON	93	45
FED. ROAD DIST. NO. 7		ILLINOIS	FED. AID PROJECT-	

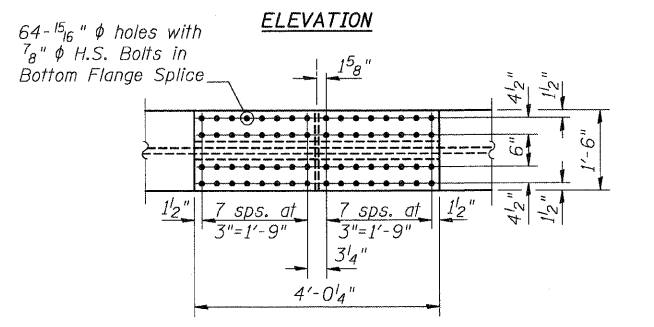
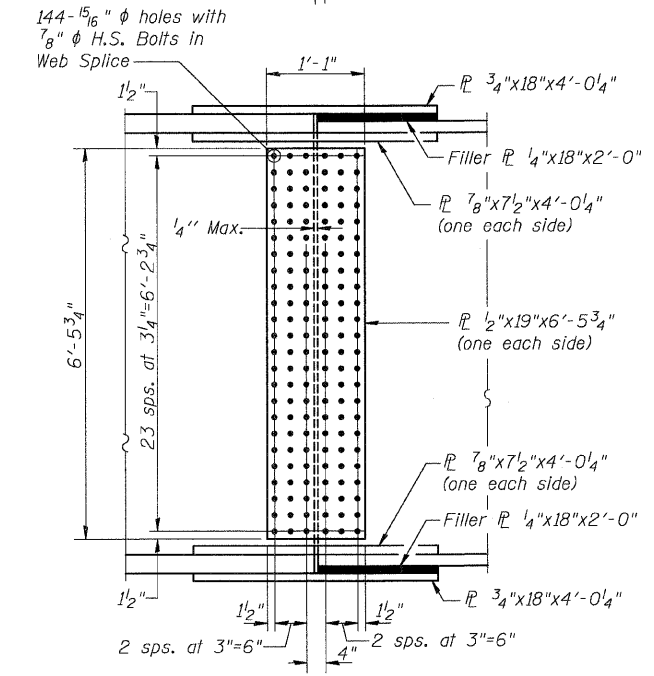
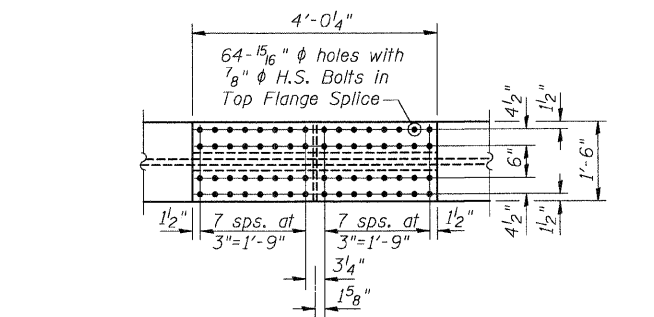
* 60-15HB-3 Contract No. 76706



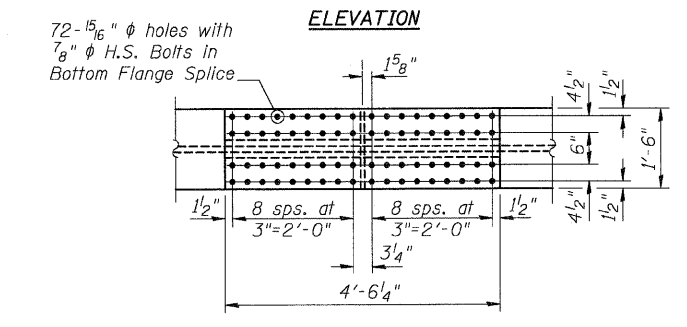
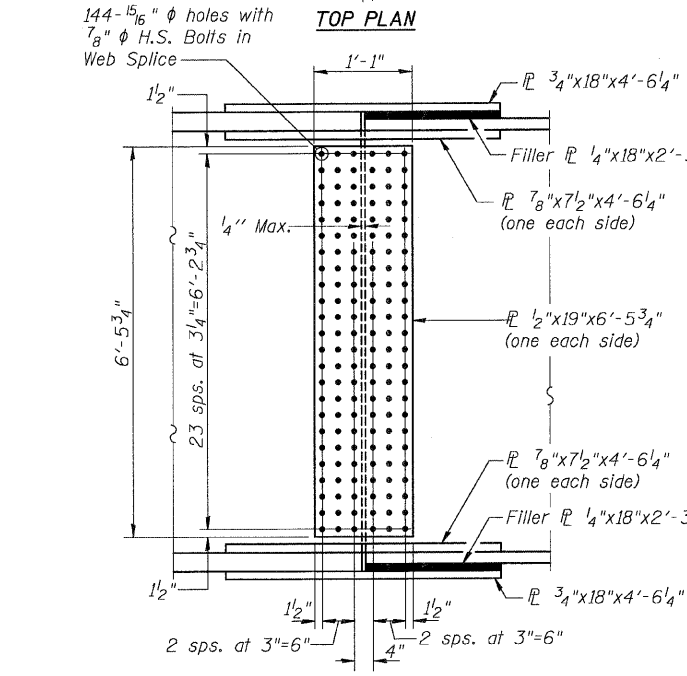
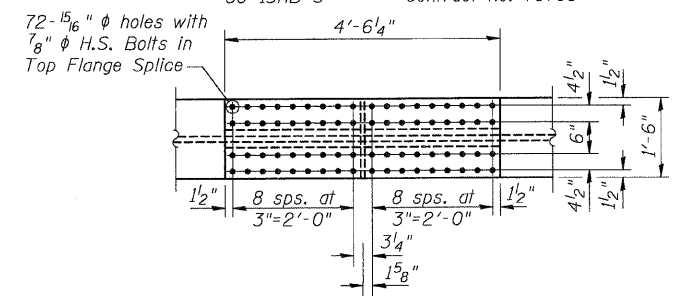
SPLICE #3
(FOR GIRDERS 7, 8, 9 & 10)



SPLICE #3
(FOR GIRDERS 11 & 12)



SPLICE #4
(FOR GIRDERS 7, 8, 9 & 10)



SPLICE #4
(FOR GIRDERS 11 & 12)

DESIGNED	ADL
CHECKED	WLW
DRAWN	BGJ
CHECKED	WLW

Notes:
All splice plates shall be AASHTO M270 Grade 50 steel, except for filler plates.
All splice plates shall conform to Notch Toughness Requirements (N.T.R.), except for filler plates.

SPLICE DETAILS
RAMP B OVER FAP RTE 310
SECTION 60-15HB-3
MADISON COUNTY
STATION 17+72.64 (RAMP B)
SN 060-0332