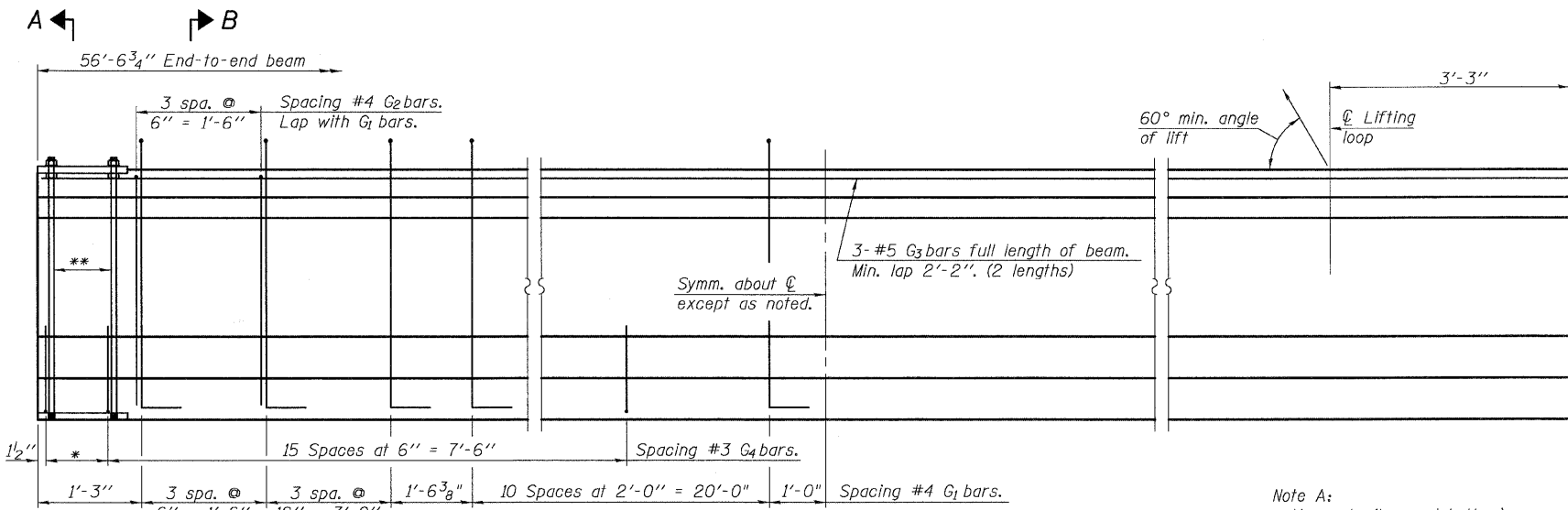


11/10/2008 4:35:18 PM

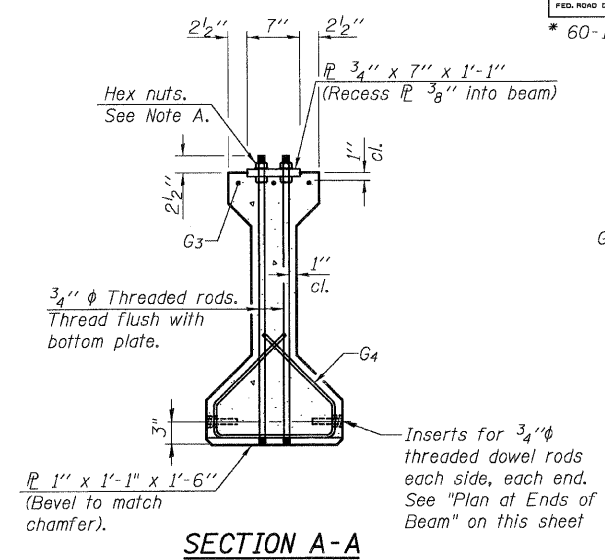
ROUTE NO.	SECTION	COUNTY	TOTAL SHEETS	SHEET NO.
P. A. P. 318	*	MADISON	93	50
FED. ROAD DIST. NO. 7	ILLINOIS	FED. AID PROJECT		

SHEET NO. 28
47 SHEETS

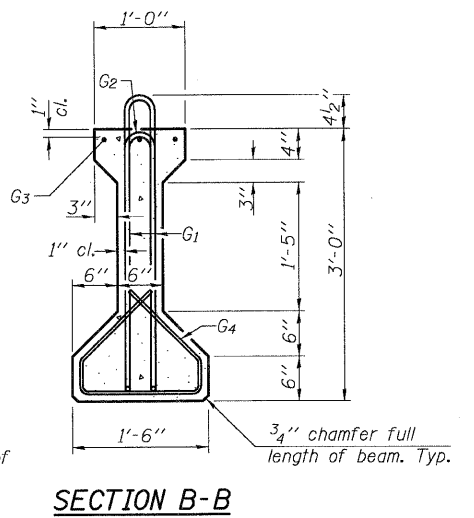
* 60-15HB-3 Contract No. 76706



ELEVATION OF BEAM
(Showing reinforcement & dimensions)



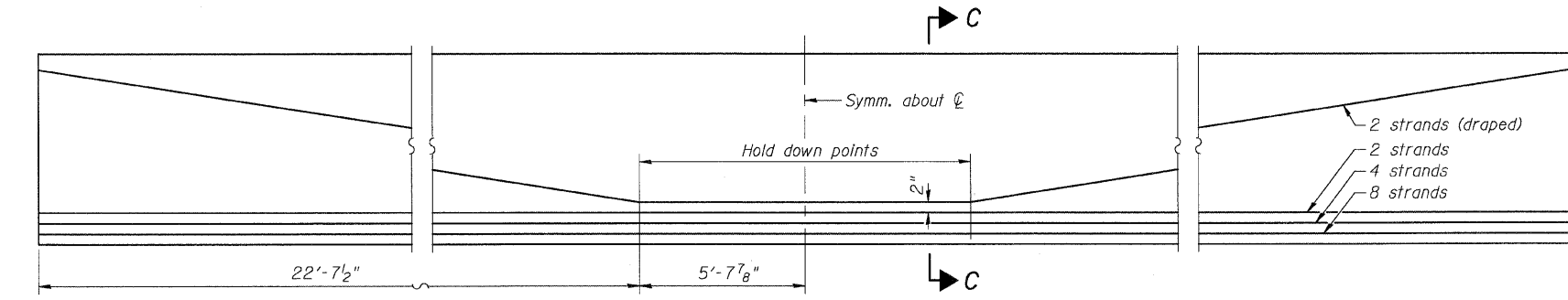
SECTION A-A



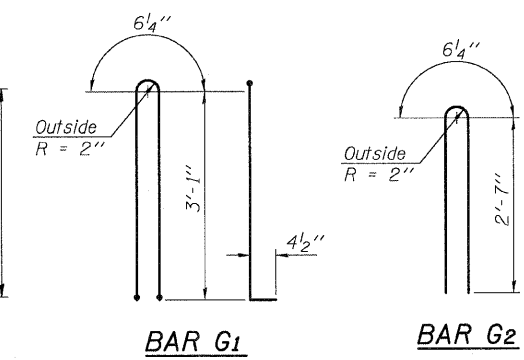
SECTION B-B

*3 spaces at 3" = 9".
**4-3/4" φ threaded dowel rods at 3" cts., Each Face.

Note A:
Hex nuts (top and bottom) with lock washers (top). Only tighten sufficiently to compress lock washers.

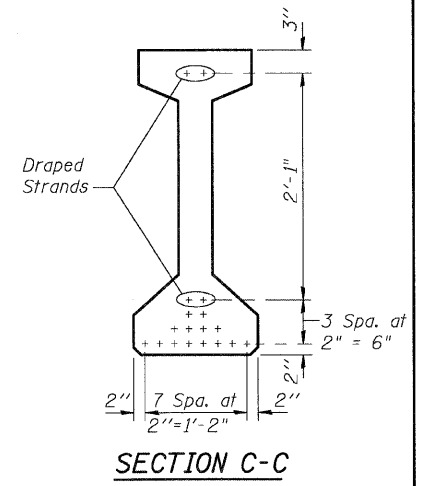


ELEVATION OF BEAM
(Showing Prestressing Steel)

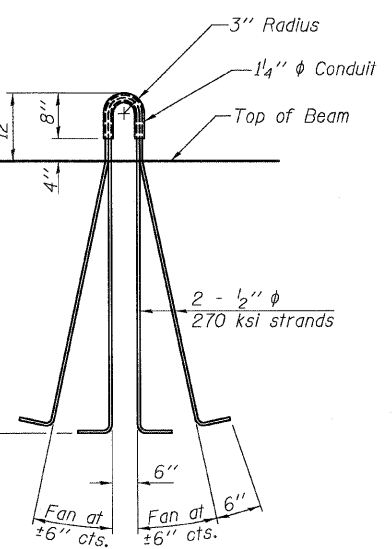


BAR G1

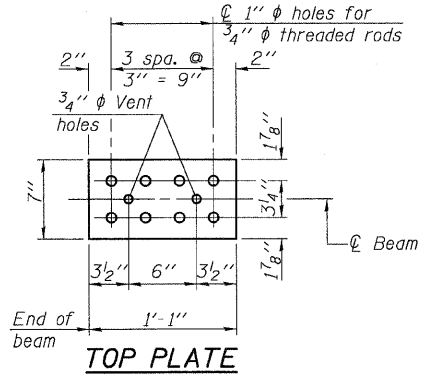
BAR G2



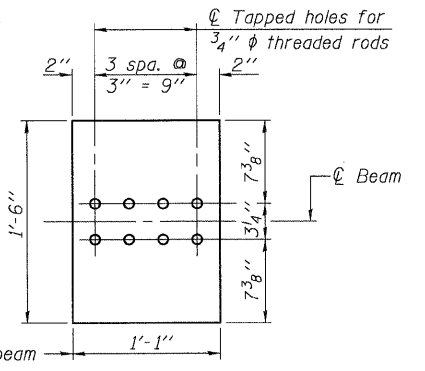
SECTION C-C



LIFTING LOOP DETAIL



TOP PLATE



BOTTOM PLATE

See bearing details for pintle hole locations when required.

NOTES

All inserts and threaded dowel rods for inserts, reinforcing and Prestressing Steel, and other items which are cast into the Precast Concrete I-Beams shall be included in the contract unit price per foot of "Furnishing and Erecting Precast Prestressed Concrete I-Beams, 36 in."

See sheet #27 of 47 for P.P.C. I-Beam Framing Plan, Interior Beam Moment Table & Interior Beam Reaction Table.

Inserts for 3/4" φ threaded dowel rods, when specified, are to be two strut, coil type for interior beams and single coil, flared loop type for exterior beams.

Prestressing steel shall be uncoated high strength, low relaxation 7-wire strand, Grade 270.

The nominal diameter shall be 1/2" and the nominal cross-sectional area shall be 0.153 sq. in.

Non-prestressing steel shall conform to ASTM A 706 (IL MOD), Grade 60.

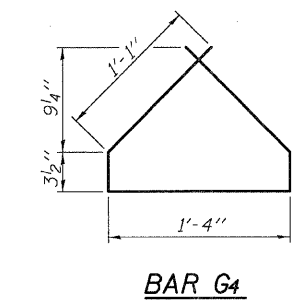
A minimum 2 1/2" φ lifting pin shall be used to engage the lifting loops during handling.

The top and bottom plates shall be AASHTO M270 Grade 50.

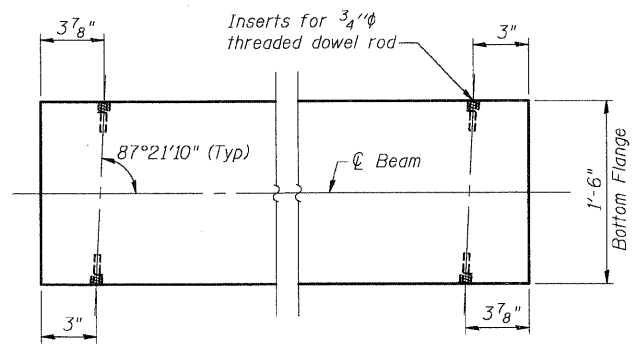
The bottom plates and studs shall be galvanized according to AASHTO M111.

Threaded rods shall be ASTM F 1554 Grade 55.

Required release strength, f'ci, shall be 5000 psi.



BAR G4



PLAN AT ENDS OF BEAM
(Showing Inserts)

*****BAR LIST ONE BEAM ONLY**

Bar	No.	Size	Length	Shape
G1	36	#4	7'-5"	∩
G2	8	#4	5'-8"	∩
G3	6	#5	29'-4"	—
G4	38	#3	4'-1"	Δ

***For information only

BILL OF MATERIAL

Item	Unit	Total
Furnishing and Erecting Precast Prestressed Concrete I-Beams, 36 in.	FOOT	339

36" PPC I-BEAM DETAILS (SOUTH APPROACH)
RAMP B OVER FAP RTE 310
SECTION 60-15HB-3
MADISON COUNTY
STATION 17+72.64 (RAMP B)
SN 060-0332

Klingner & Assoc., P.C.

pt:\00f_1es\000224\af\ugover-bridge\plans\0600332beam.dgn