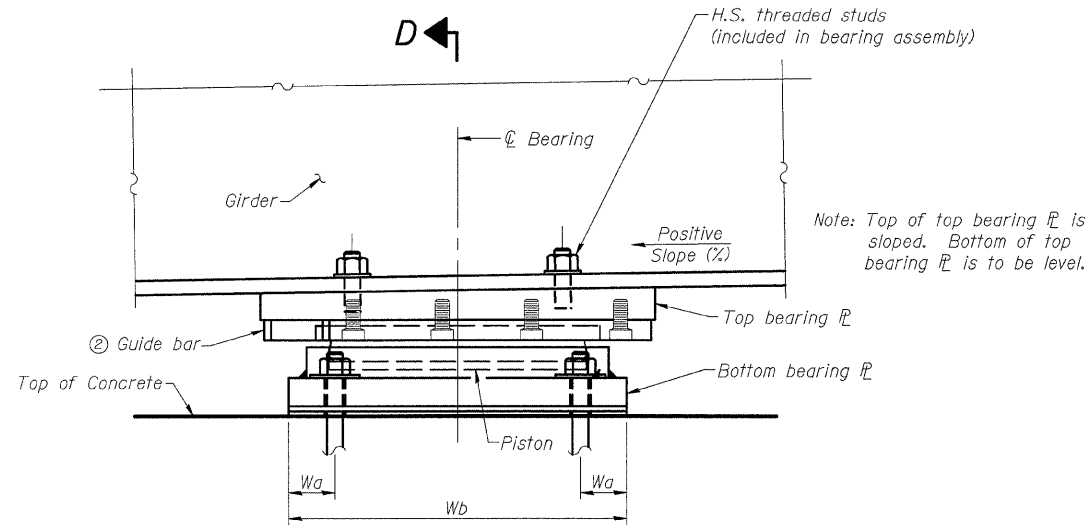


1/12/2010 9:56:42 AM

ROUTE NO.	SECTION	COUNTY	TOTAL SHEETS	SHEET NO.	SHEET NO. 30
S.B.L. F.A.P. 310	*	MADISON	93	52	47 SHEETS
FED. ROAD DIST. NO. 7	ILLINOIS	FED. AID PROJECT-			

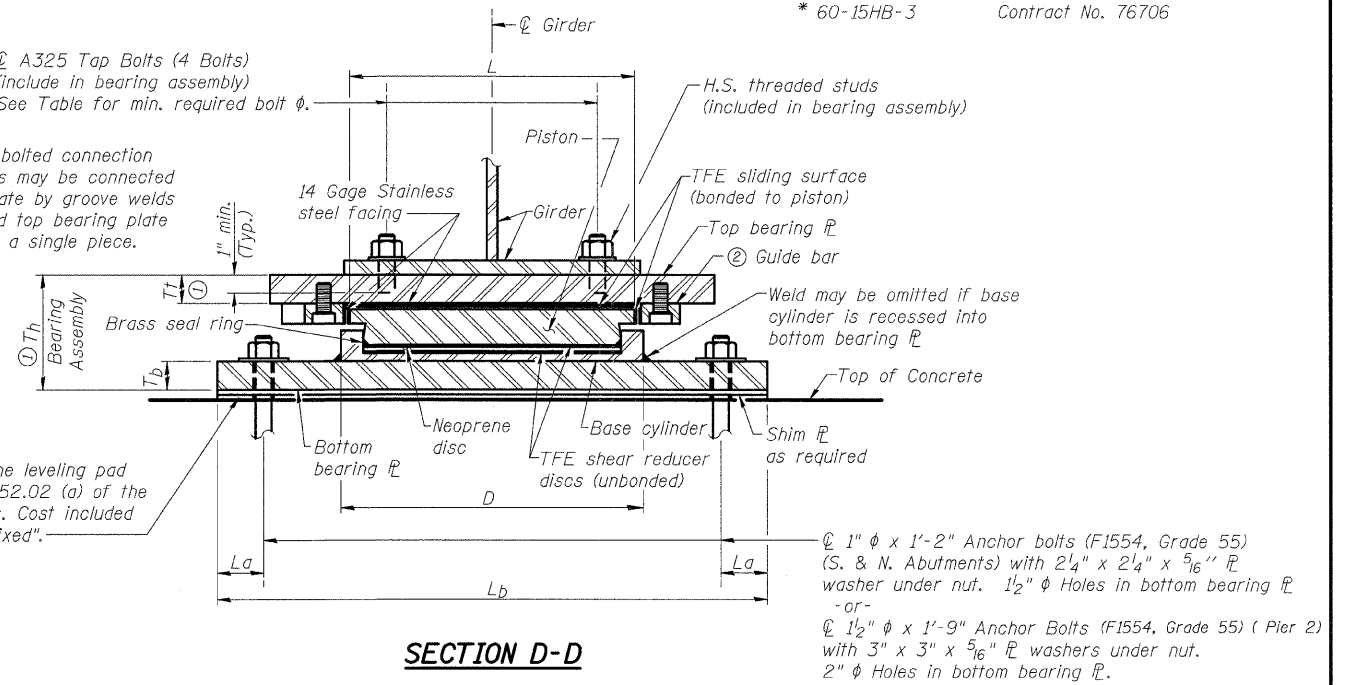
\* 60-15HB-3 Contract No. 76706



**ELEVATION**  
**HLMR BEARING, GUIDED EXPANSION**

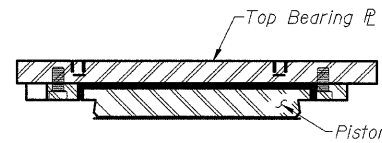
Note: Top of top bearing  $\bar{r}$  is sloped. Bottom of top bearing  $\bar{r}$  is to be level.

- Ⓜ A325 Tap Bolts (4 Bolts) (include in bearing assembly) See Table for min. required bolt  $\phi$ .
- Ⓜ As alternates to the bolted connection shown, the guide bars may be connected to the top bearing plate by groove welds or the guide bars and top bearing plate may be fabricated as a single piece.
- ① Dimensions  $T_t$  and  $T_b$  are given at  $\bar{r}$  bearing. Thickness will vary because girders are sloped.

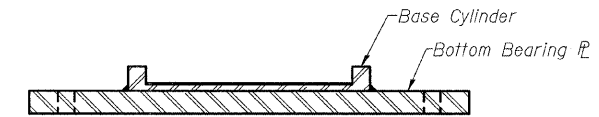


**SECTION D-D**

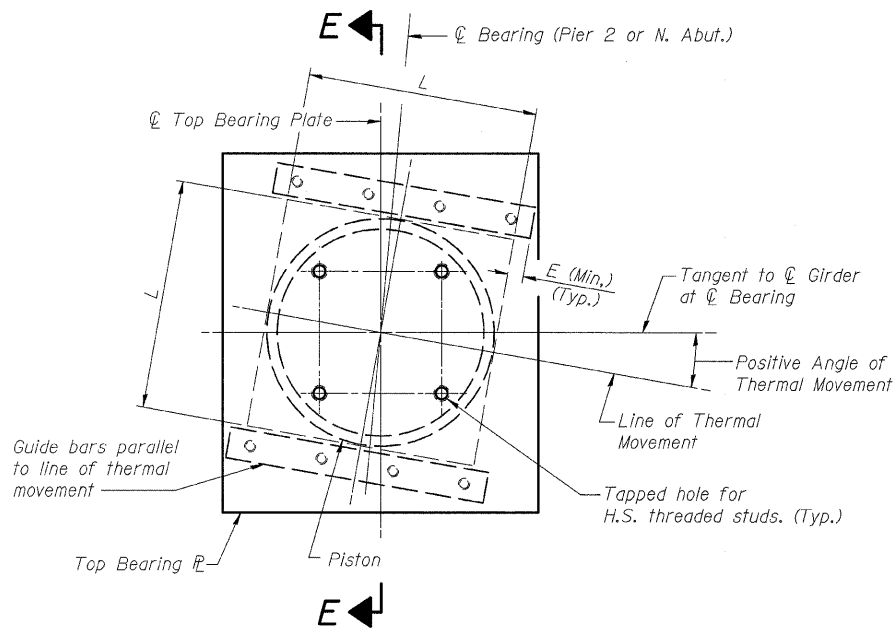
1/8" elastomeric neoprene leveling pad according to Article 1052.02 (a) of the Standard Specifications. Cost included with "HLMR Bearing, Fixed".



**SECTION E-E**



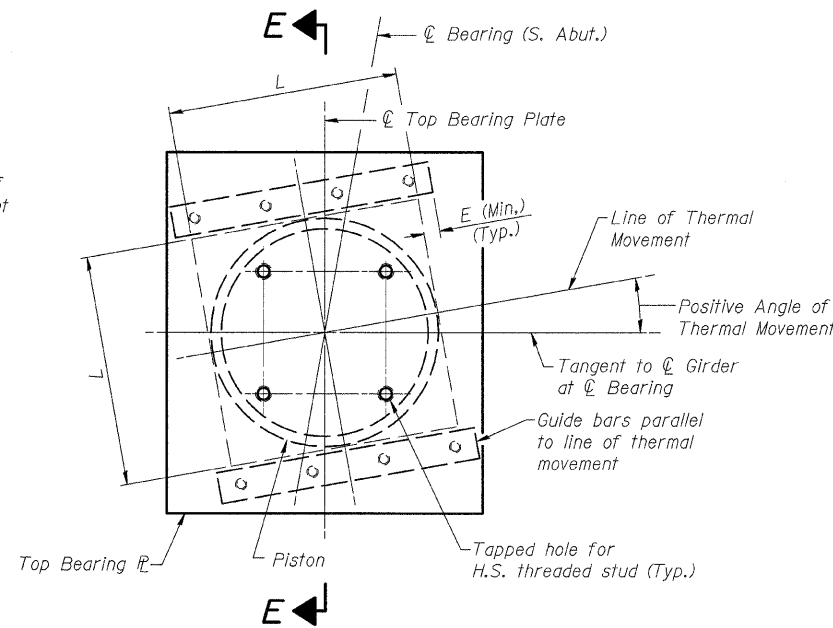
**SECTION F-F**



**TOP BEARING  $\bar{r}$  AND PISTON PLAN**  
**FOR HLMR BEARING, GUIDED EXPANSION**

at Pier 2 and North Abutment

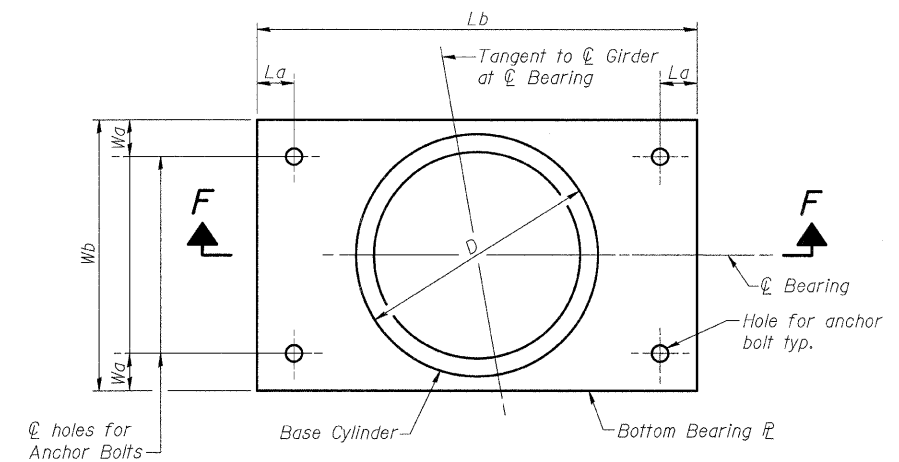
Girder not shown for clarity. Plan Dimensions of Top Plate and Guide bars not shown in schedule to be determined by Bearing Fabricator.



**TOP BEARING  $\bar{r}$  AND PISTON PLAN**  
**FOR HLMR BEARING, GUIDED EXPANSION**

at South Abutment

Girder not shown for clarity. Plan Dimensions of Top Plate and Guide bars not shown in schedule to be determined by Bearing Fabricator.



**BOTTOM BEARING  $\bar{r}$  AND BASE CYLINDER PLAN**  
**FOR HLMR BEARING, GUIDED EXPANSION**

Notes:

Work this sheet with sheet #29 of 47.

See sheet #29 of 47 for Schedule, Notes, and Bill of Material

**HLMR BEARING DETAILS**  
**RAMP B OVER FAP RTE 310**  
**SECTION 60-15HB-3**  
**MADISON COUNTY**  
**STATION 17+72.64 (RAMP B)**  
**SN 060-0332**

Klingner & Assoc., P.C.

DESIGNED	ADL
CHECKED	WLW
DRAWN	RLW
CHECKED	WLW

c:\00f\1es\000024\duver-bridge-Plans\0600332PotBearing.dgn