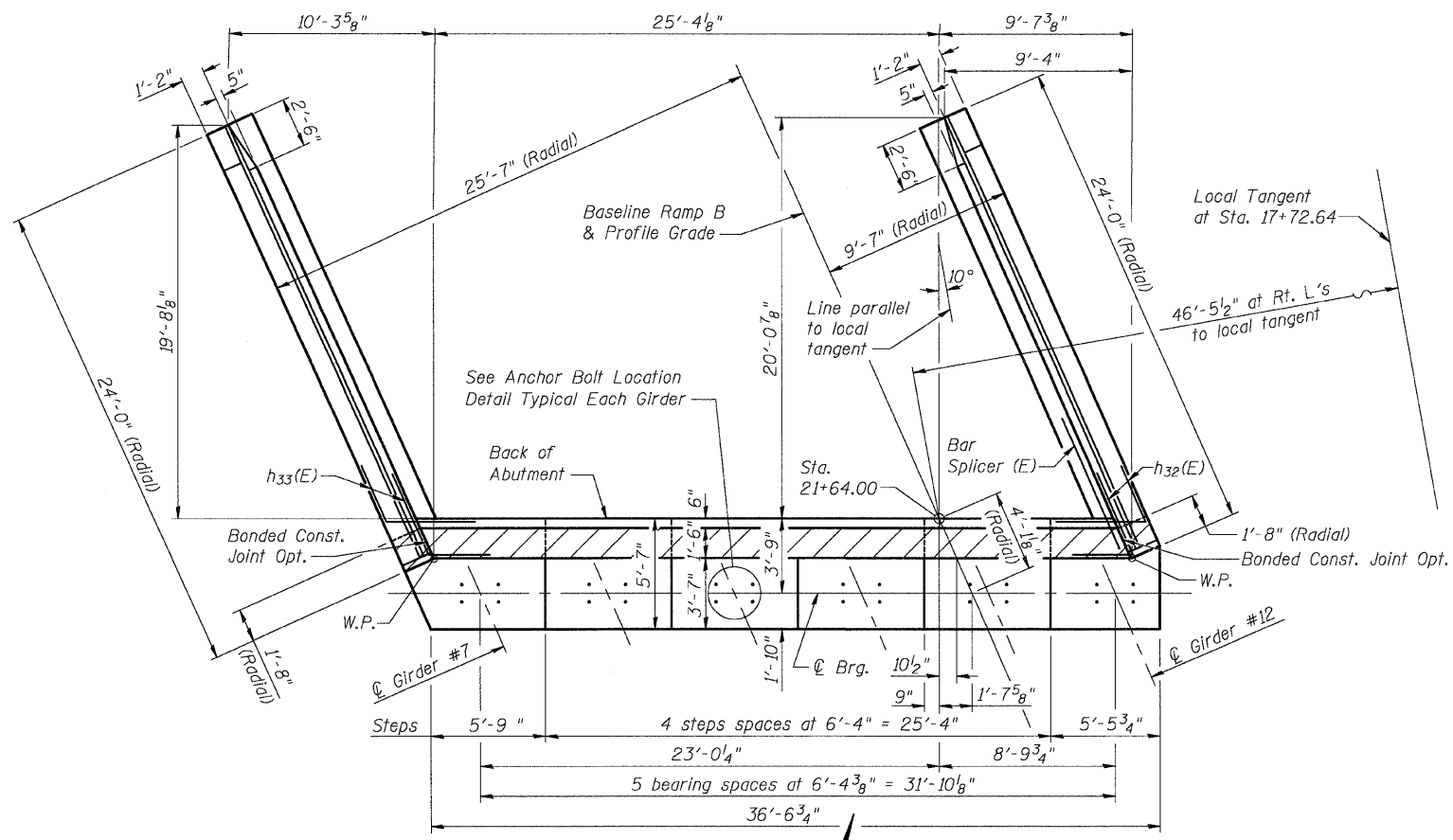


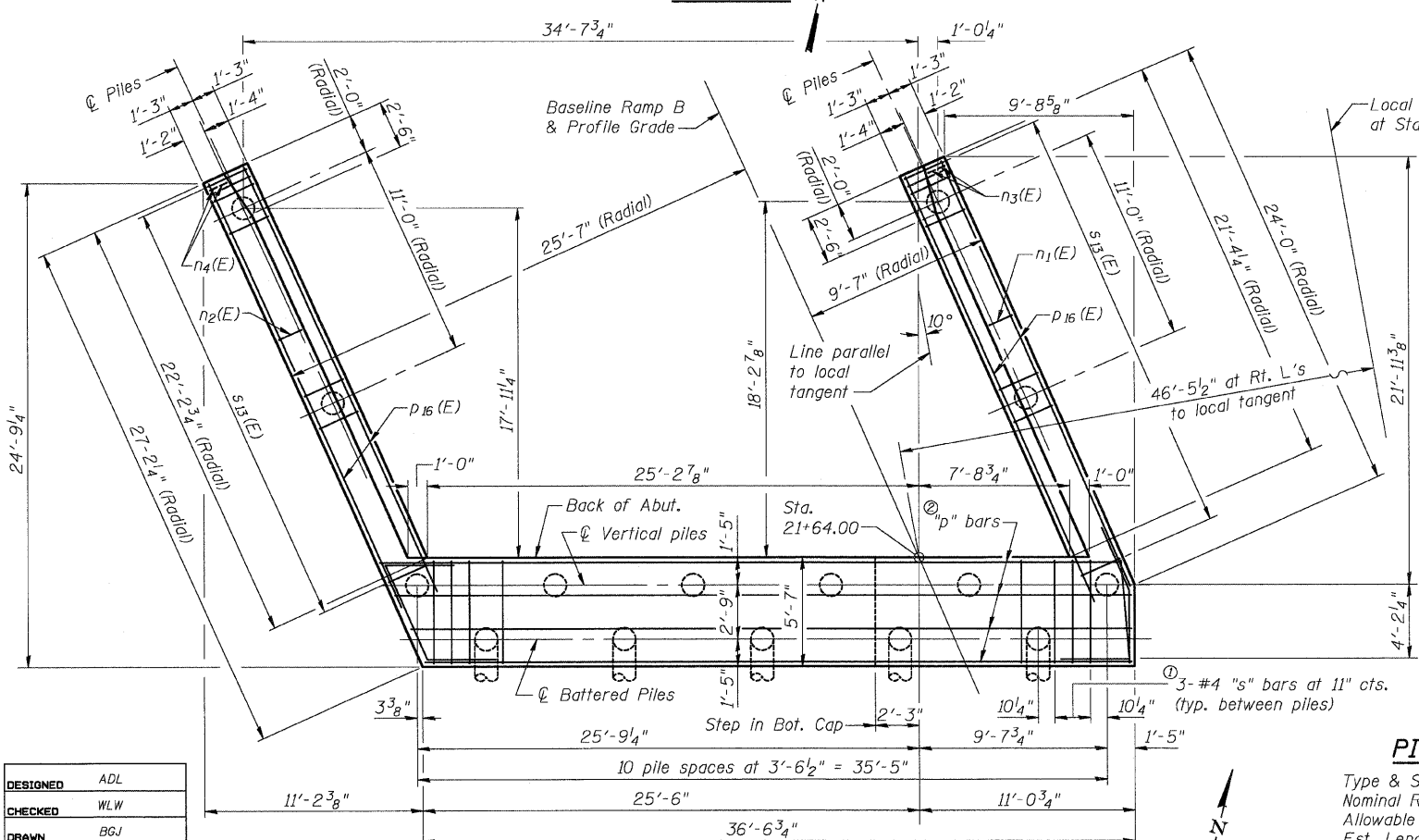
11/10/2008 4:37:22 PM

c:\00f\les\000024\of\luciver-br\bridge\plans\060332-northabut.dgn

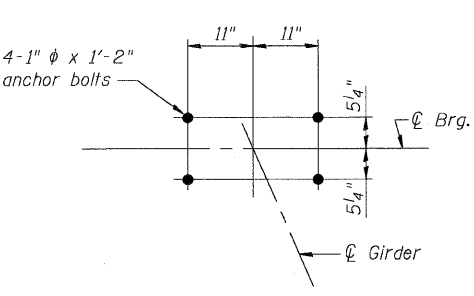
ROUTE NO.	SECTION	COUNTY	TOTAL SHEETS	SHEET NO.
#	#	MADISON	93	56
SHEET NO. 34				
47 SHEETS				
* 60-15HB-3 Contract No. 76706				



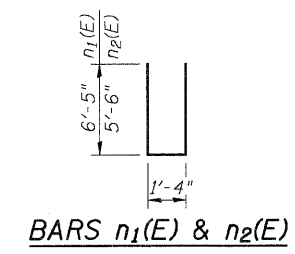
TOP VIEW



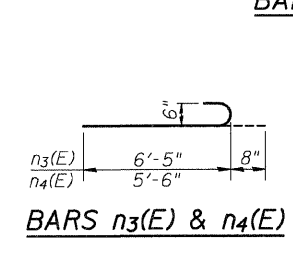
PLAN PILE - CAP



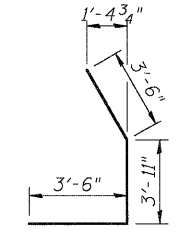
ANCHOR BOLT LOCATION DETAIL



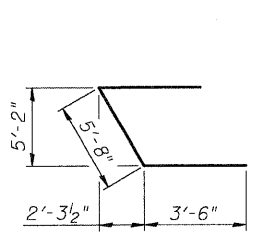
BARS n1(E) & n2(E)



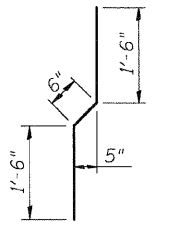
BARS n3(E) & n4(E)



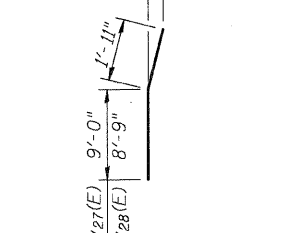
BAR u1(E)



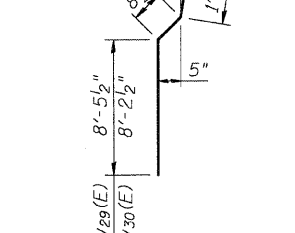
BAR u2(E)



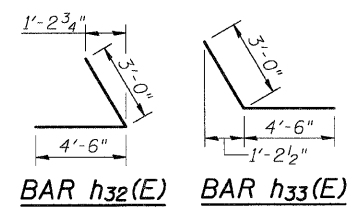
BAR v23(E)



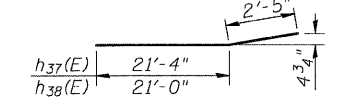
BARS v27(E) & v28(E)



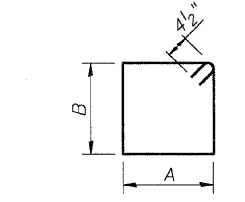
BARS v29(E) & v30(E)



BARS h32(E) & h33(E)



BARS h37(E) & h38(E)



BARS s6(E) thru s13(E)

A & B DIMENSIONS

Bar	A	B
s6(E)	5'-3"	3'-2"
s7(E)	5'-3"	3'-6"
s8(E)	5'-3"	3'-11"
s9(E)	5'-3"	4'-3"
s10(E)	5'-3"	3'-3"
s11(E)	5'-3"	3'-8"
s12(E)	5'-3"	4'-1"
s13(E)	2'-2"	2'-2"

NORTH ABUT. BILL OF MATERIAL

Bar	No.	Size	Length	Shape
h31(E)	16	#5	34'-9"	
h32(E)	20	#5	7'-6"	L
h33(E)	20	#5	7'-6"	L
h34(E)	4	#6	34'-9"	
h35(E)	21	#4	23'-9"	
h36(E)	10	#4	23'-5"	
h37(E)	21	#4	23'-9"	
h38(E)	2	#4	23'-5"	
n1(E)	22	#6	14'-2"	
n2(E)	22	#6	12'-4"	
n3(E)	6	#6	7'-1"	
n4(E)	6	#6	6'-2"	
p5(E)	4	#7	16'-11"	
p6(E)	1	#7	23'-0"	
p7(E)	1	#7	23'-11"	
p8(E)	1	#7	24'-5"	
p9(E)	1	#7	25'-3"	
p10(E)	2	#6	36'-4"	
p11(E)	2	#6	38'-0"	
p12(E)	3	#7	5'-1"	
p13(E)	1	#7	4'-7"	
p14(E)	16	#7	9'-9"	
p15(E)	4	#7	11'-7"	
p16(E)	12	#7	23'-10"	
s6(E)	5	#4	17'-7"	
s7(E)	6	#4	18'-3"	
s8(E)	5	#4	19'-1"	
s9(E)	4	#4	19'-9"	
s10(E)	1	#4	17'-9"	
s11(E)	6	#4	18'-7"	
s12(E)	4	#4	19'-5"	
s13(E)	48	#4	9'-5"	
u1(E)	4	#6	10'-11"	L
u2(E)	4	#6	12'-8"	L
v22(E)	72	#5	10'-2"	
v23(E)	36	#4	3'-6"	
v24(E)	36	#5	2'-6"	
v25(E)	25	#6	10'-11"	
v26(E)	25	#6	10'-8"	
v27(E)	3	#6	10'-11"	
v28(E)	3	#6	10'-8"	
v29(E)	22	#6	11'-1"	
v30(E)	22	#6	10'-10"	
Concrete Structures	CU YD		87.0	
Reinforcement Bars, Epoxy Coated	POUND		7,970	
Bar Splicers	EACH		36	
Structure Excavation	CU YD		154	
Furnishing Metal Shell Piles 14"	FOOT		728	
Driving Piles	FOOT		728	
Concrete Sealer	SQ FT		503	
Test Pile Metal Shells	EACH		1	
Porous Granular Embankment (Special)	CU YD		117	

Notes:  
 Work this sheet with sheets #35, #36 & #37 of 47.  
 Space reinforcement in cap to miss anchor bolts.  
 Pour steps monolithically with cap.  
 All edges shall have standard 3/4" chamfer, unless noted otherwise.  
 See sheet #36 & #37 of 47 for Wing Wall Details.  
 For anchor bolt installation see details on sheet #40 of 47.  
 For details of bar splicers, see sheet #41 of 47.  
 See sheet #35 of 47 for Elevation of Abutment and Section thru Abutment.  
 Hatched area to be poured after superstructure forms have been removed. Quantity of concrete included with concrete superstructure on sheet #12 of 47.  
 Exposed concrete surfaces on the face of the abutment backwall, the abutment bearing seats, and the vertical surfaces on the front and sides of the abutment cap shall be treated with concrete sealer.

**PILE DATA**  
 Type & Size: Metal Shell - 14 in. dia x 0.250 in. walls  
 Nominal Required Bearing: 330 kips  
 Allowable Resistance Available: 110 kips  
 Est. Length: 52 ft  
 No. Required: 14 + 1 Test Pile

**NORTH ABUTMENT  
 RAMP B OVER FAP RTE 310  
 SECTION 60-15HB-3  
 MADISON COUNTY  
 STATION 17+72.64 (RAMP B)  
 SN 060-0332**