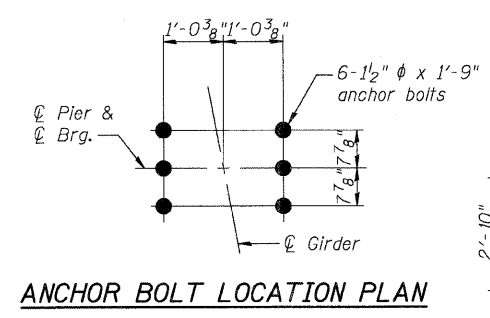
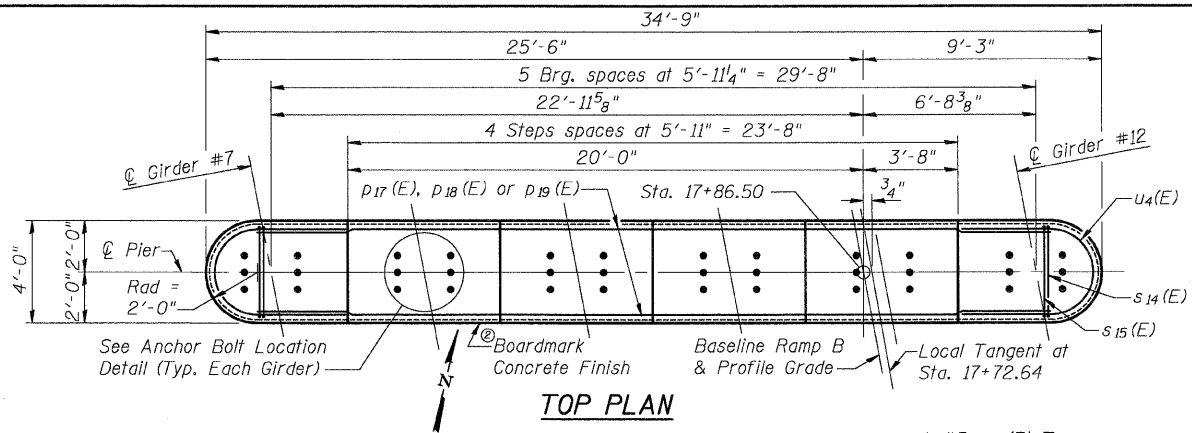


11/10/2008 4:41:43 PM

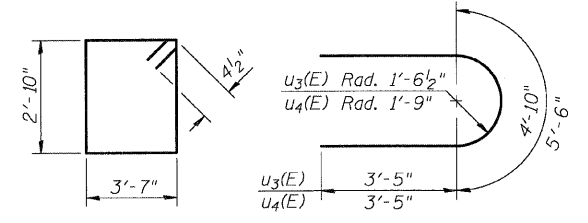
Notes: Space reinforcement in cap to miss anchor bolts.  
 Pair steps monolithically with cap.

**PILE DATA**

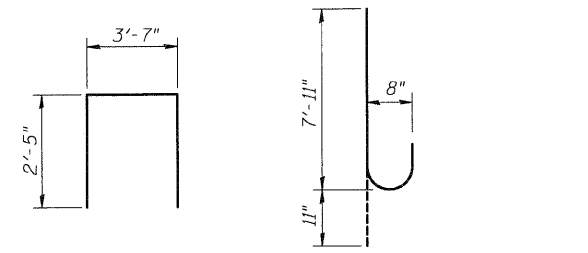
Type & Size: Metal Shell - 14 in. dia x 0.250 in. walls  
 Nominal Required Bearing: 330 kips  
 Allowable Resistance Available: 110 kips  
 Est. Length: 27 ft  
 No. Req'd: 39 + 1 Test Pile



ROUTE NO.	SECTION	COUNTY	TOTAL SHEETS	SHEET NO.
60-15HB-3	*	MADISON	93	38
47 SHEETS				
FED. ROAD DIST. NO. 7			ILLINOIS	FED. AID PROJECT-
* 60-15HB-3			Contract No. 76706	



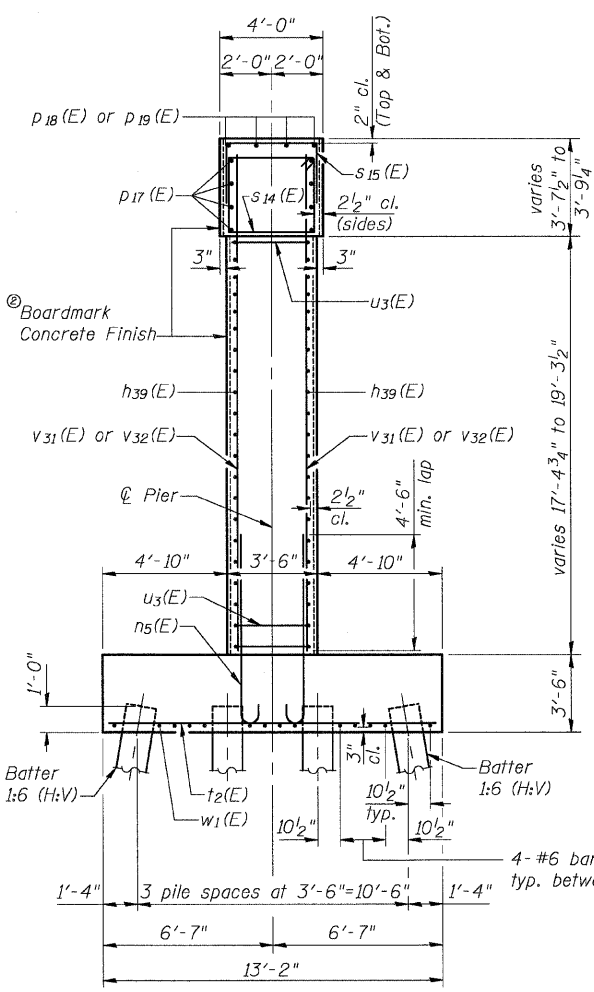
BAR s14(E) BARS u3(E) & u4(E)



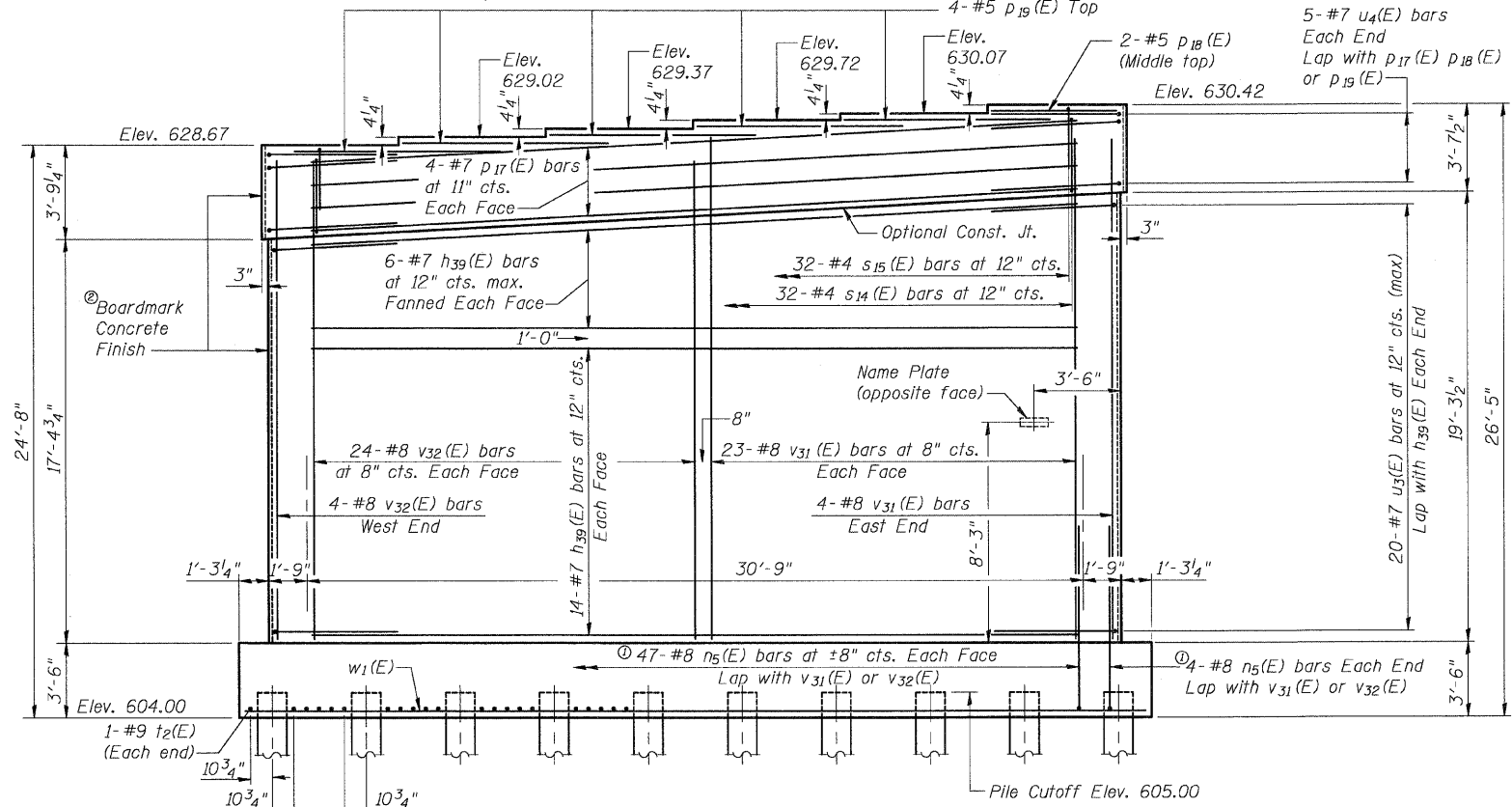
BAR s15(E) BAR n5(E)

**BILL OF MATERIAL**

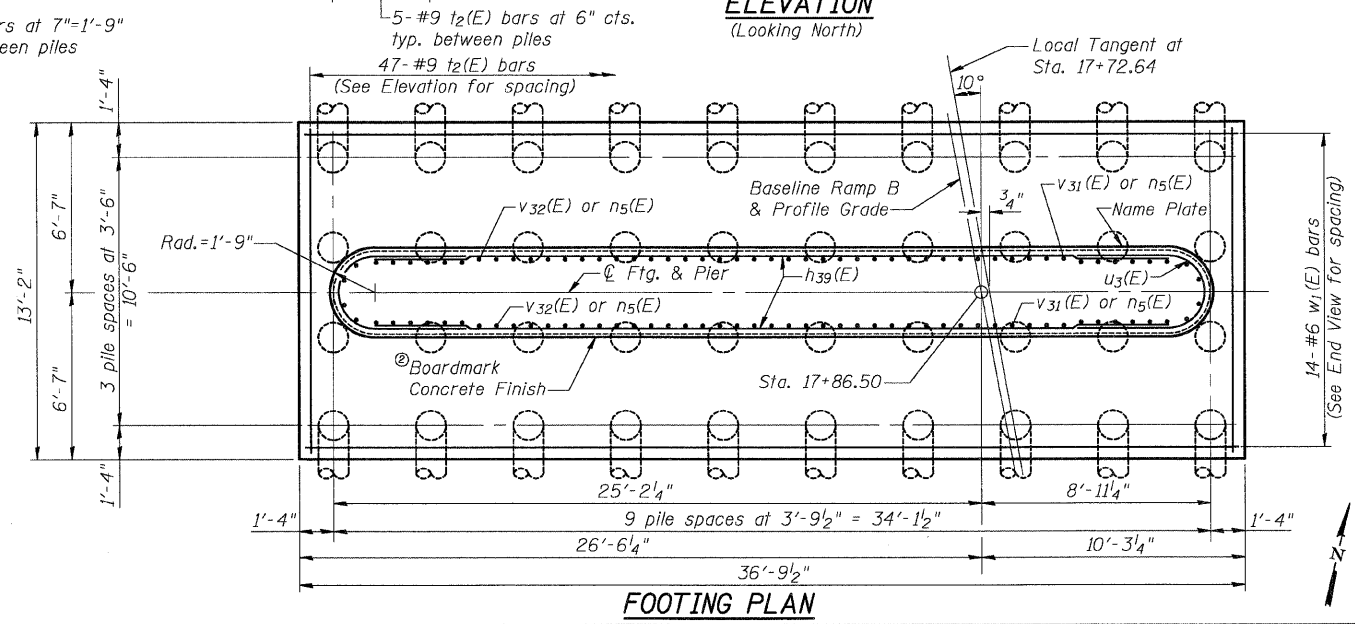
Bar	No.	Size	Length	Shape
h39(E)	40	#7	30'-9"	—
n5(E)	102	#8	8'-10"	U
p17(E)	8	#7	30'-9"	—
p18(E)	2	#5	5'-0"	—
p19(E)	20	#5	8'-3"	—
s14(E)	32	#4	13'-7"	□
s15(E)	32	#4	8'-5"	□
t2(E)	47	#9	12'-8"	—
u3(E)	40	#7	11'-8"	U
u4(E)	10	#7	12'-4"	U
v31(E)	50	#8	21'-3"	—
v32(E)	52	#8	20'-5"	—
w1(E)	14	#6	36'-4"	—
Concrete Structures	CU YD		161.0	
Reinforcement Bars, Epoxy Coated	POUND		15,740	
Structure Excavation	CU YD		157	
Form Liner Textured Surface	SQ FT		1,604	
Furnishing Metal Shell Piles 14"	FOOT		1,053	
Driving Piles	FOOT		1,053	
Test Pile Metal Shells	EACH		1	



**END VIEW**



**ELEVATION**  
(Looking North)



**FOOTING PLAN**

① Adjust spacing of n5(E) bars as needed to miss piles  
 ② Random width Boardmark Concrete Finish on faces and ends of cap & wall (See Sheet #3 of 47 for details)

**PIER #1**  
**RAMP B OVER FAP RTE 310**  
**SECTION 60-15HB-3**  
**MADISON COUNTY**  
**STATION 17+72.64 (RAMP B)**  
**SN 060-0332**

Klingner & Assoc., P.C.

DESIGNED	ADL
CHECKED	WLW
DRAWN	BGJ
CHECKED	WLW
PC-1	4-30-99