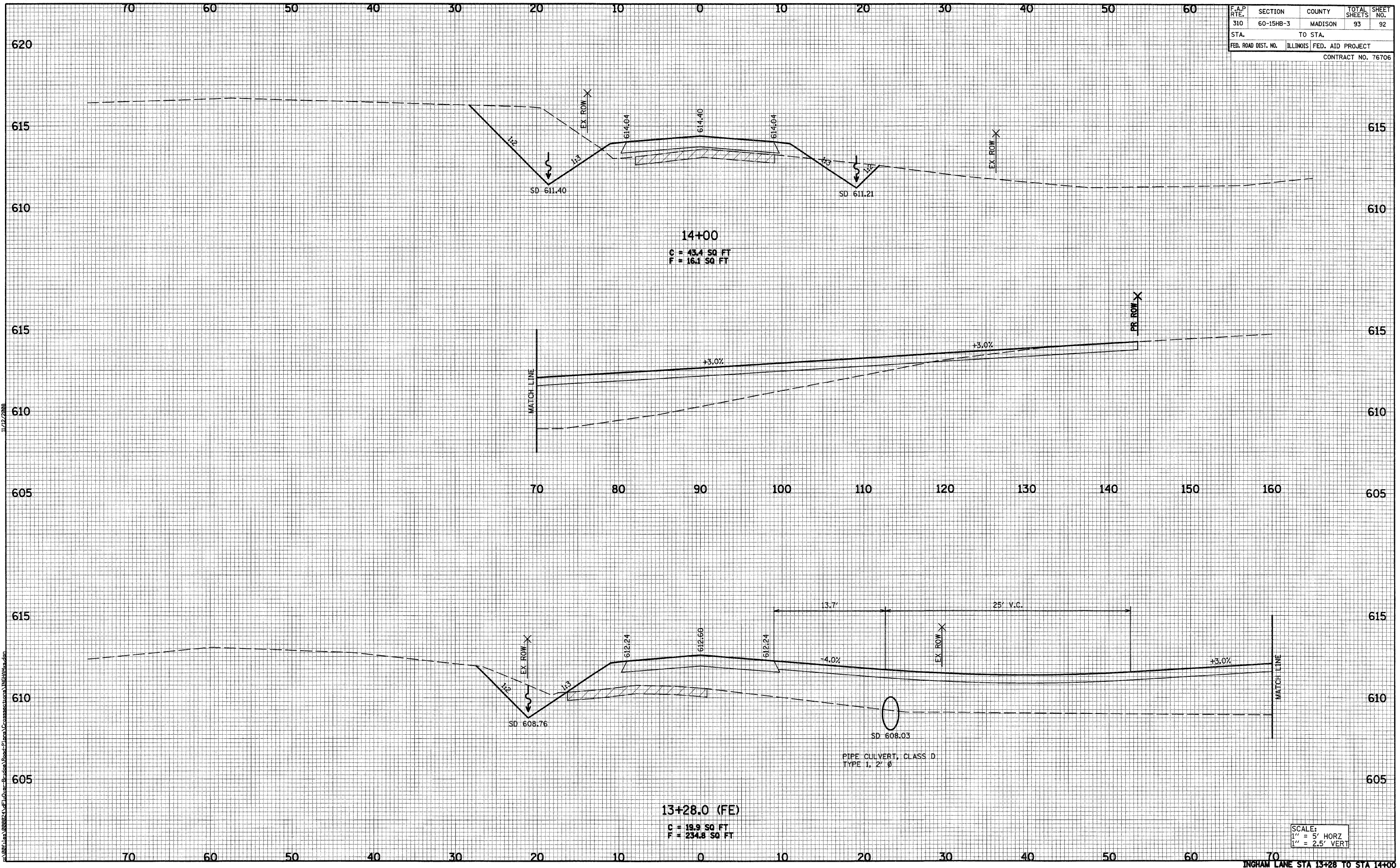


F.A.P. RTE.	SECTION	COUNTY	TOTAL SHEETS	SHEET NO.
310	60-15HB-3	MADISON	93	92
STA.		TO STA.		
FED. ROAD DIST. NO.		ILLINOIS FED. AID PROJECT		
CONTRACT NO. 76706				

DATE	
BY	
FINISHED SURVEY	
NOTED	
PLOTTED	
TEMPERATURE	
AREAS	
CHECKED	
NO.	

DATE	
BY	
ORIGINAL SURVEY	
NOTED	
PLOTTED	
TEMPERATURE	
AREAS	
CHECKED	
NO.	



14+00  
 C = 43.4 SQ FT  
 F = 16.1 SQ FT

13+28.0 (FE)  
 C = 19.9 SQ FT  
 F = 234.8 SQ FT

PIPE CULVERT, CLASS D  
 TYPE 1, 2' Ø

SCALE:  
 1" = 5' HORZ  
 1" = 2.5' VERT