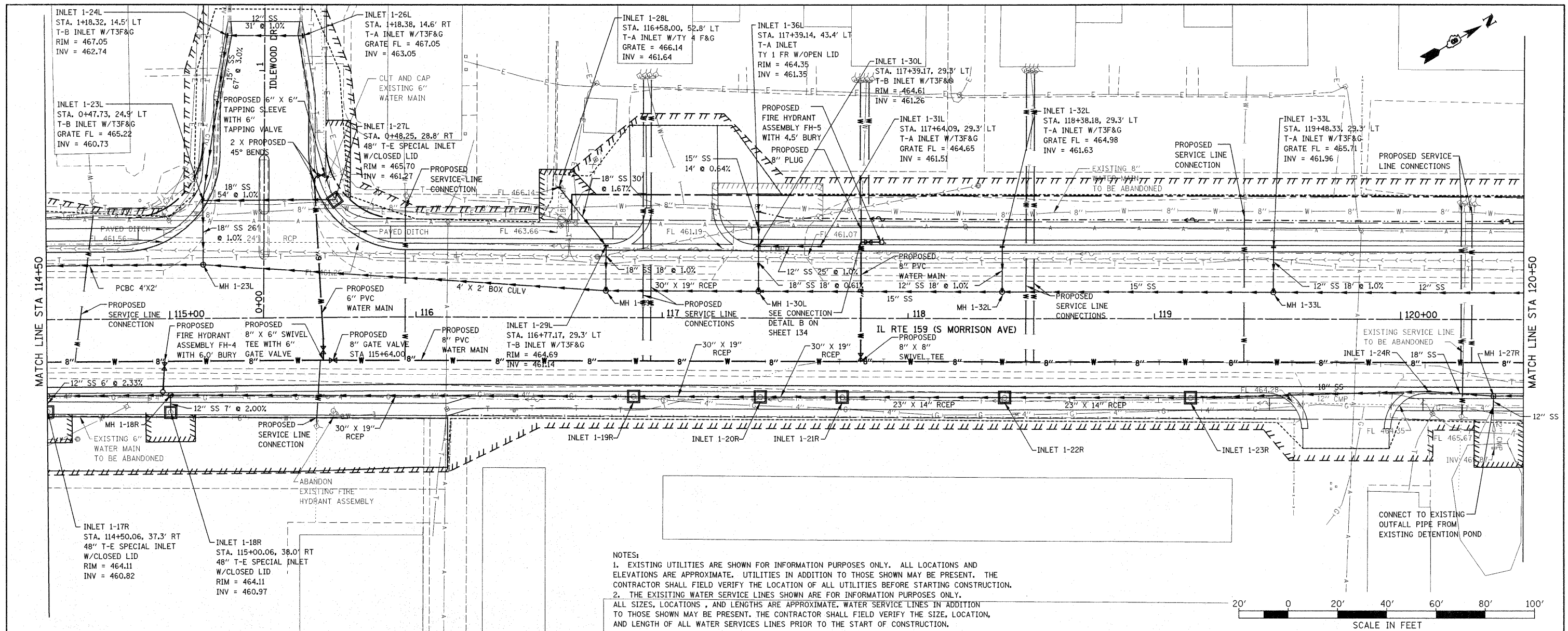
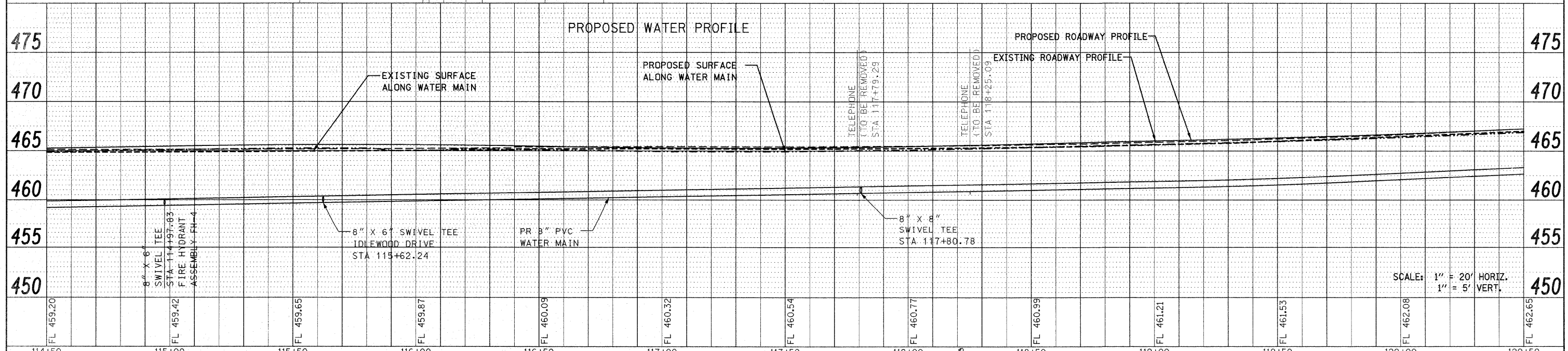
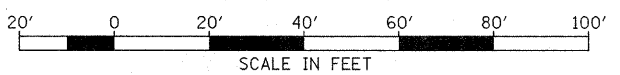


PLAN	SURVEYED	DATE
	PLOTTED	
	CHECKED	
	BY	
	NO.	
	DATE	
	BY	
	NO.	
	DATE	

PROFILE	SURVEYED	DATE
	PLOTTED	
	CHECKED	
	BY	
	NO.	
	DATE	
	BY	
	NO.	
	DATE	



NOTES:  
 1. EXISTING UTILITIES ARE SHOWN FOR INFORMATION PURPOSES ONLY. ALL LOCATIONS AND ELEVATIONS ARE APPROXIMATE. UTILITIES IN ADDITION TO THOSE SHOWN MAY BE PRESENT. THE CONTRACTOR SHALL FIELD VERIFY THE LOCATION OF ALL UTILITIES BEFORE STARTING CONSTRUCTION.  
 2. THE EXISTING WATER SERVICE LINES SHOWN ARE FOR INFORMATION PURPOSES ONLY. ALL SIZES, LOCATIONS, AND LENGTHS ARE APPROXIMATE. WATER SERVICE LINES IN ADDITION TO THOSE SHOWN MAY BE PRESENT. THE CONTRACTOR SHALL FIELD VERIFY THE SIZE, LOCATION, AND LENGTH OF ALL WATER SERVICES LINES PRIOR TO THE START OF CONSTRUCTION.



FILE NAME = P:\Projects\513501\CADD\DWG\876830-shd.dwg	USER NAME = default	DESIGNED -	REVISED -	<b>STATE OF ILLINOIS DEPARTMENT OF TRANSPORTATION</b>	<b>DRAINAGE AND UTILITY PLAN/PROFILE IL ROUTE 159</b>			F.A.P. R.T.E. = 600	SECTION = 60-(30,31,128)-1	COUNTY = MADISON/ST. CLAIR	TOTAL SHEETS = 399	SHEET NO. = 98
PLOT SCALE = 20.0000' / IN.	DRAWN -	REVISED -	REVISED -		SCALE: 1" = 20'	SHEET NO. 10 OF 33 SHEETS	STA 114+50.00 TO STA 120+50.00	CONTRACT NO. 76830				
PLOT DATE = 12/17/2009	CHECKED -	REVISED -	REVISED -		FED. ROAD DIST. NO. ILLINOIS FED. AID PROJECT							
	DATE -	REVISED -	REVISED -									