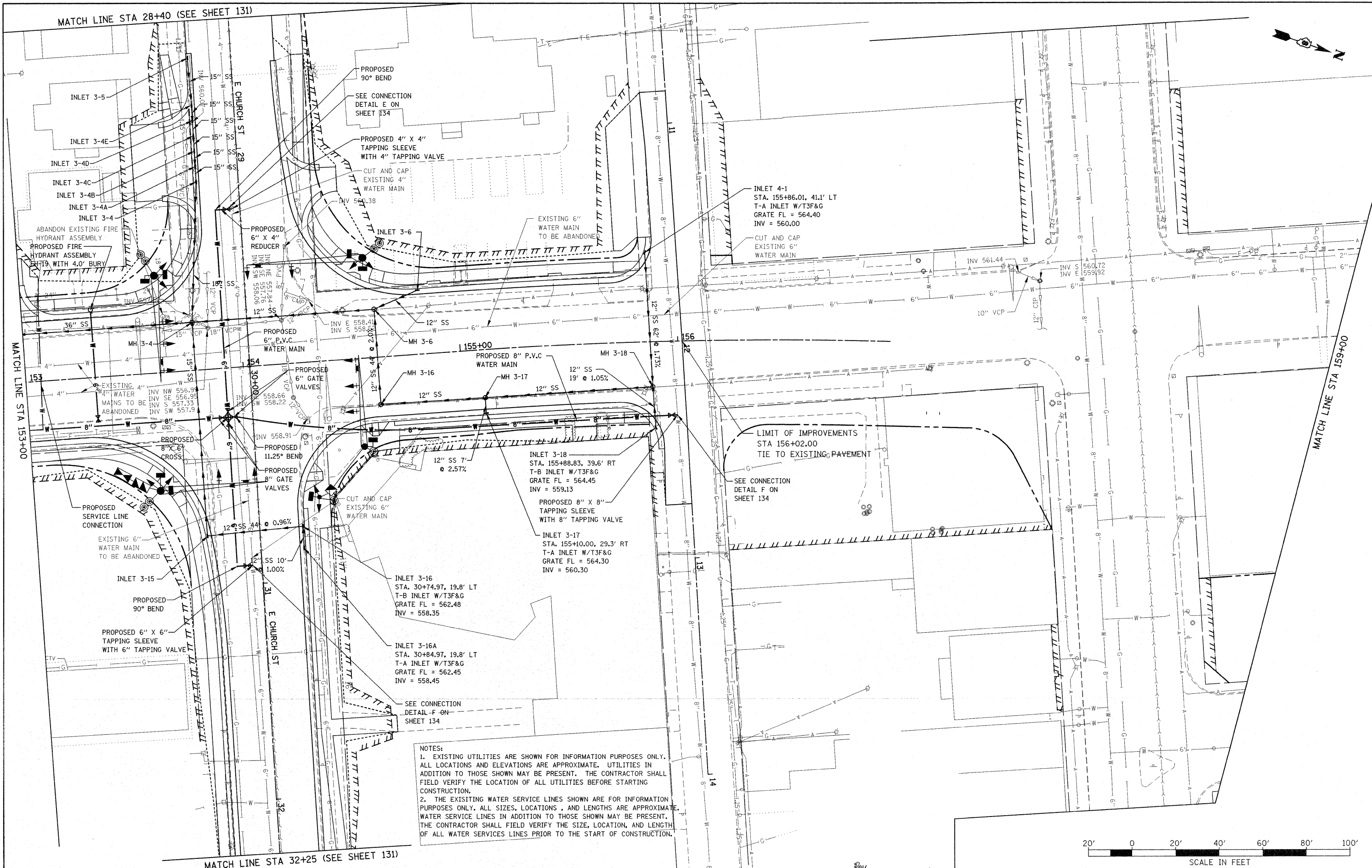


MATCH LINE STA 28+40 (SEE SHEET 131)

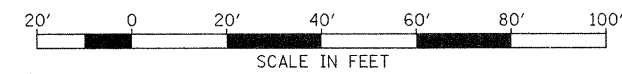


MATCH LINE STA 153+00

MATCH LINE STA 159+00

MATCH LINE STA 32+25 (SEE SHEET 131)

NOTES:
 1. EXISTING UTILITIES ARE SHOWN FOR INFORMATION PURPOSES ONLY. ALL LOCATIONS AND ELEVATIONS ARE APPROXIMATE. UTILITIES IN ADDITION TO THOSE SHOWN MAY BE PRESENT. THE CONTRACTOR SHALL FIELD VERIFY THE LOCATION OF ALL UTILITIES BEFORE STARTING CONSTRUCTION.
 2. THE EXISTING WATER SERVICE LINES SHOWN ARE FOR INFORMATION PURPOSES ONLY. ALL SIZES, LOCATIONS, AND LENGTHS ARE APPROXIMATE. WATER SERVICE LINES IN ADDITION TO THOSE SHOWN MAY BE PRESENT. THE CONTRACTOR SHALL FIELD VERIFY THE SIZE, LOCATION, AND LENGTH OF ALL WATER SERVICES LINES PRIOR TO THE START OF CONSTRUCTION.



FILE NAME = P:\Projects\13501\CADD\DWG\0876830-sh-drain.dgn	USER NAME = default	DESIGNED -	REVISED -	STATE OF ILLINOIS DEPARTMENT OF TRANSPORTATION	DRAINAGE AND UTILITY PLAN IL ROUTE 159	F.A.P. RTE. 600	SECTION 60-(30,31,128)-1	COUNTY MADISON/ST. CLAIR	TOTAL SHEETS 399	SHEET NO. 119		
PLOT SCALE = 20.0000' / 1"	PLOT DATE = 12/17/2009	DRAWN -	REVISED -			SCALE: 1" = 20'	SHEET NO. 31 OF 33 SHEETS	STA 153+00.00 TO STA 156+02.00		CONTRACT NO. 76830		
		CHECKED -	REVISED -			FED. ROAD DIST. NO.		ILLINOIS FED. AID PROJECT				
		DATE -	REVISED -									