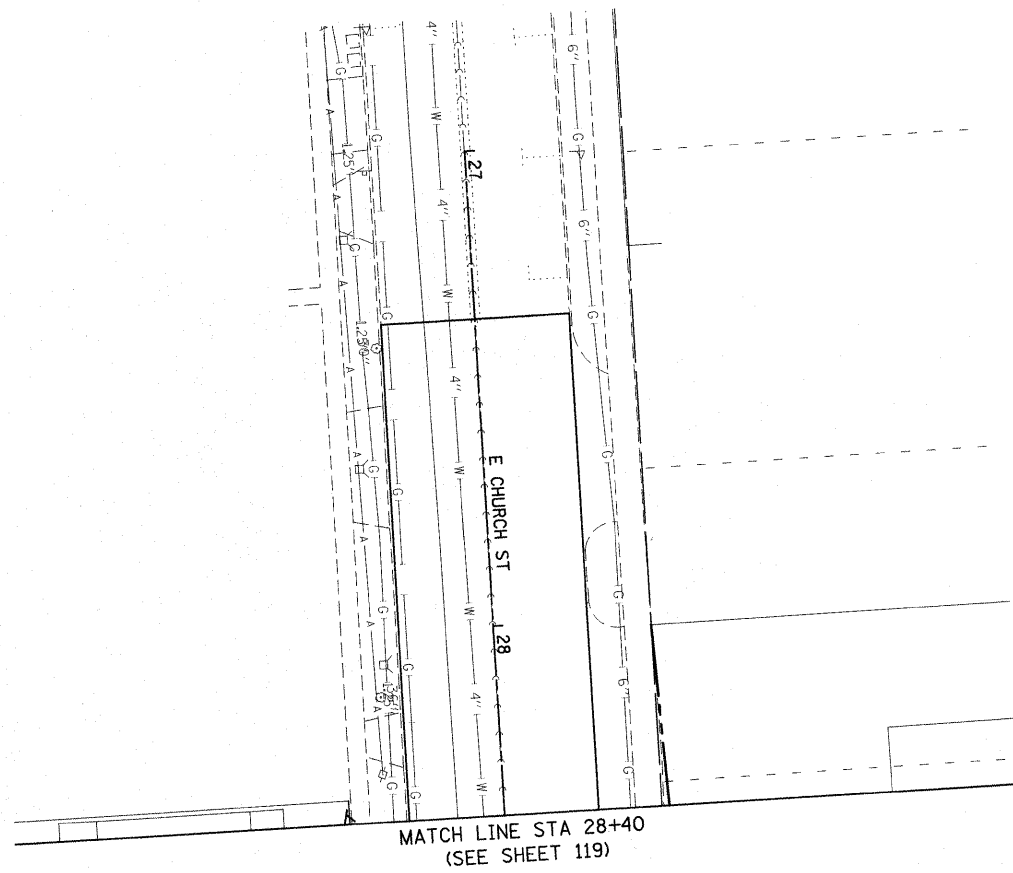




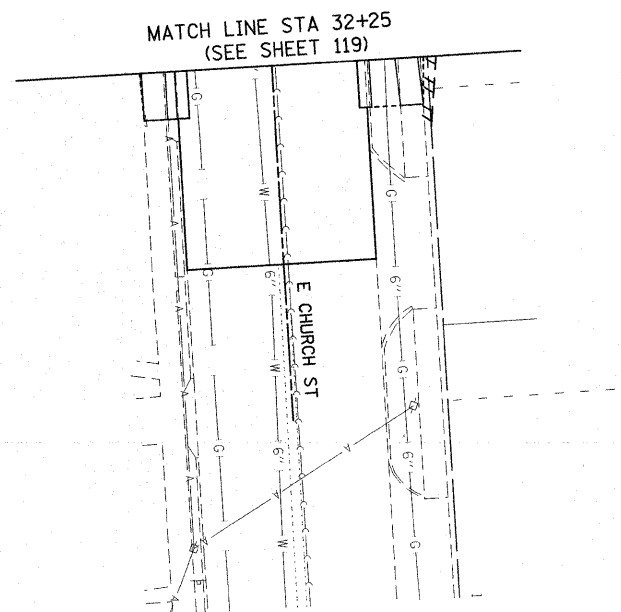
**NOTES:**

1. EXISTING UTILITIES ARE SHOWN FOR INFORMATION PURPOSES ONLY. ALL LOCATIONS AND ELEVATIONS ARE APPROXIMATE. UTILITIES IN ADDITION TO THOSE SHOWN MAY BE PRESENT. THE CONTRACTOR SHALL FIELD VERIFY THE LOCATION OF ALL UTILITIES BEFORE STARTING CONSTRUCTION.
2. THE EXISTING WATER SERVICE LINES SHOWN ARE FOR INFORMATION PURPOSES ONLY. ALL SIZES, LOCATIONS, AND LENGTHS ARE APPROXIMATE. WATER SERVICE LINES IN ADDITION TO THOSE SHOWN MAY BE PRESENT. THE CONTRACTOR SHALL FIELD VERIFY THE SIZE, LOCATION, AND LENGTH OF ALL WATER SERVICES LINES PRIOR TO THE START OF CONSTRUCTION.



**NOTES:**

1. EXISTING UTILITIES ARE SHOWN FOR INFORMATION PURPOSES ONLY. ALL LOCATIONS AND ELEVATIONS ARE APPROXIMATE. UTILITIES IN ADDITION TO THOSE SHOWN MAY BE PRESENT. THE CONTRACTOR SHALL FIELD VERIFY THE LOCATION OF ALL UTILITIES BEFORE STARTING CONSTRUCTION.
2. THE EXISTING WATER SERVICE LINES SHOWN ARE FOR INFORMATION PURPOSES ONLY. ALL SIZES, LOCATIONS, AND LENGTHS ARE APPROXIMATE. WATER SERVICE LINES IN ADDITION TO THOSE SHOWN MAY BE PRESENT. THE CONTRACTOR SHALL FIELD VERIFY THE SIZE, LOCATION, AND LENGTH OF ALL WATER SERVICES LINES PRIOR TO THE START OF CONSTRUCTION.



FILE NAME =	USER NAME = default	DESIGNED -	REVISED -	<b>STATE OF ILLINOIS DEPARTMENT OF TRANSPORTATION</b>	<b>DRAINAGE AND UTILITY SIDE ROAD PLAN E. CHURCH ST.</b>	F.A.P. RTE.	SECTION	COUNTY	TOTAL SHEETS	SHEET NO.
p:\projects\513501\cadd\dgn\0876838-shd	drain-sideroads.dgn	DRAWN -	REVISED -			600	60-(30,31,128)-1	MADISON/ST. CLAIR	399	131
	PLOT SCALE = 20,0000' / IN.	CHECKED -	REVISED -			CONTRACT NO. 76830				
	PLOT DATE = 12/17/2009	DATE -	REVISED -			SCALE: 1" = 20'	SHEET NO. 10 OF 12 SHEETS	STA N/A	TO STA N/A	FED. ROAD DIST. NO.