

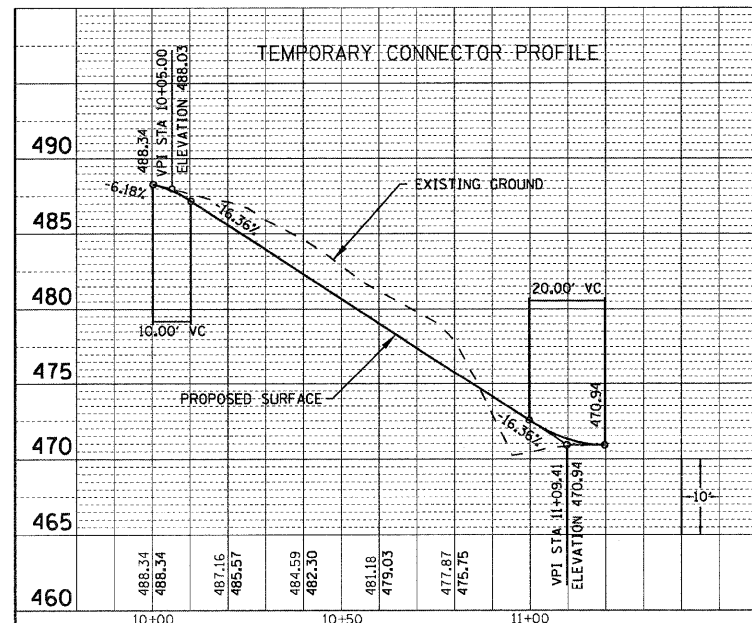
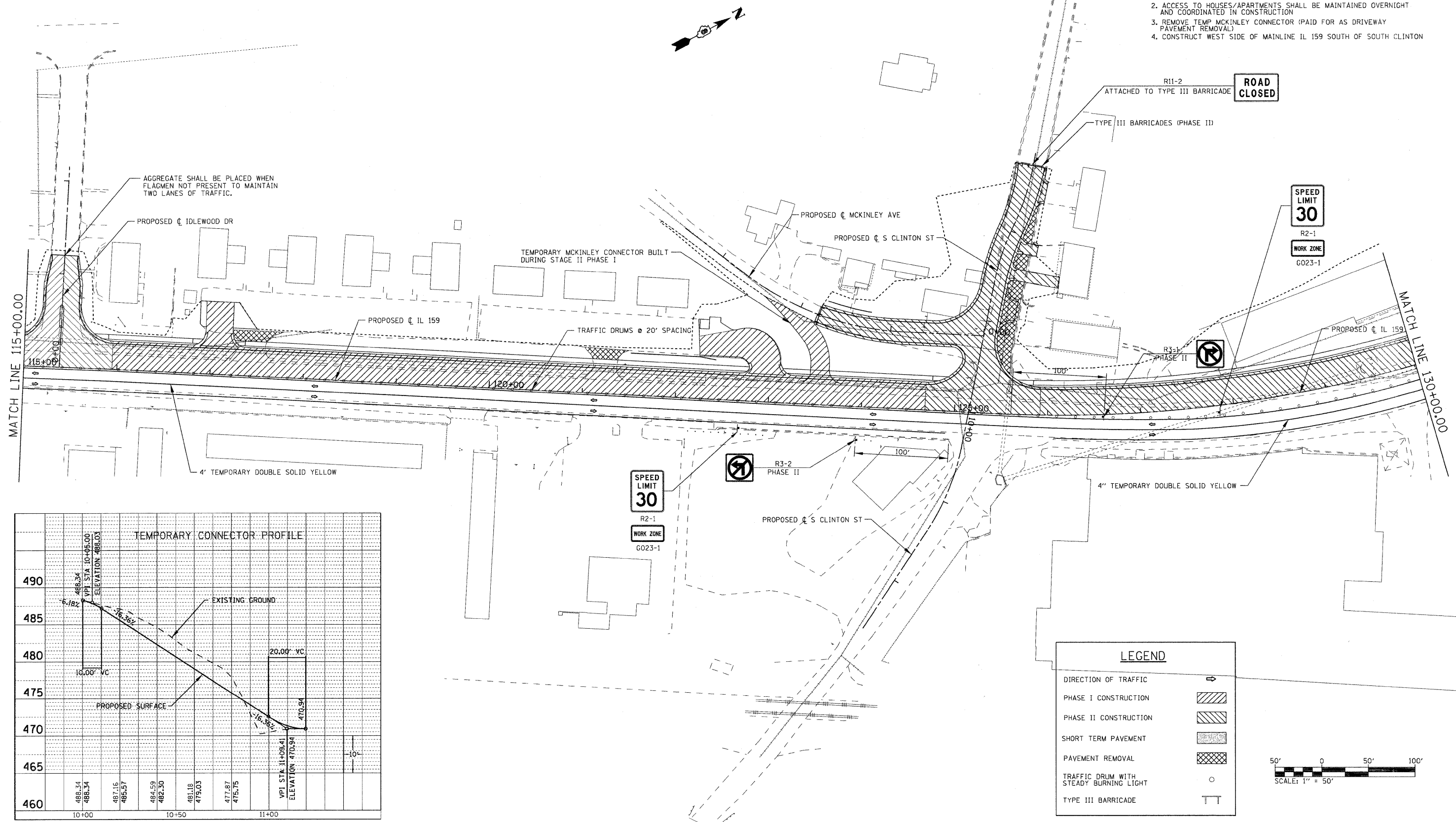
SUGGESTED STAGING AT SOUTH CLINTON

PHASE I

1. KEEP SOUTH CLINTON OPEN
2. CONSTRUCT TEMP MCKINLEY CONNECTOR

PHASE II

1. CLOSE AND RECONSTRUCT SOUTH CLINTON
2. ACCESS TO HOUSES/APARTMENTS SHALL BE MAINTAINED OVERNIGHT AND COORDINATED IN CONSTRUCTION
3. REMOVE TEMP MCKINLEY CONNECTOR (PAID FOR AS DRIVEWAY PAVEMENT REMOVAL)
4. CONSTRUCT WEST SIDE OF MAINLINE IL 159 SOUTH OF SOUTH CLINTON



LEGEND

- DIRECTION OF TRAFFIC: →
- PHASE I CONSTRUCTION: [Hatched pattern]
- PHASE II CONSTRUCTION: [Diagonal hatched pattern]
- SHORT TERM PAVEMENT: [Stippled pattern]
- PAVEMENT REMOVAL: [Cross-hatched pattern]
- TRAFFIC DRUM WITH STEADY BURNING LIGHT: ○
- TYPE III BARRICADE: TT

