

PART OF THE SW 1/4 OF SECTION 34, T3N, R8W, OF THE 3RD PM, MADISON COUNTY, ILLINOIS

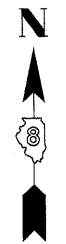
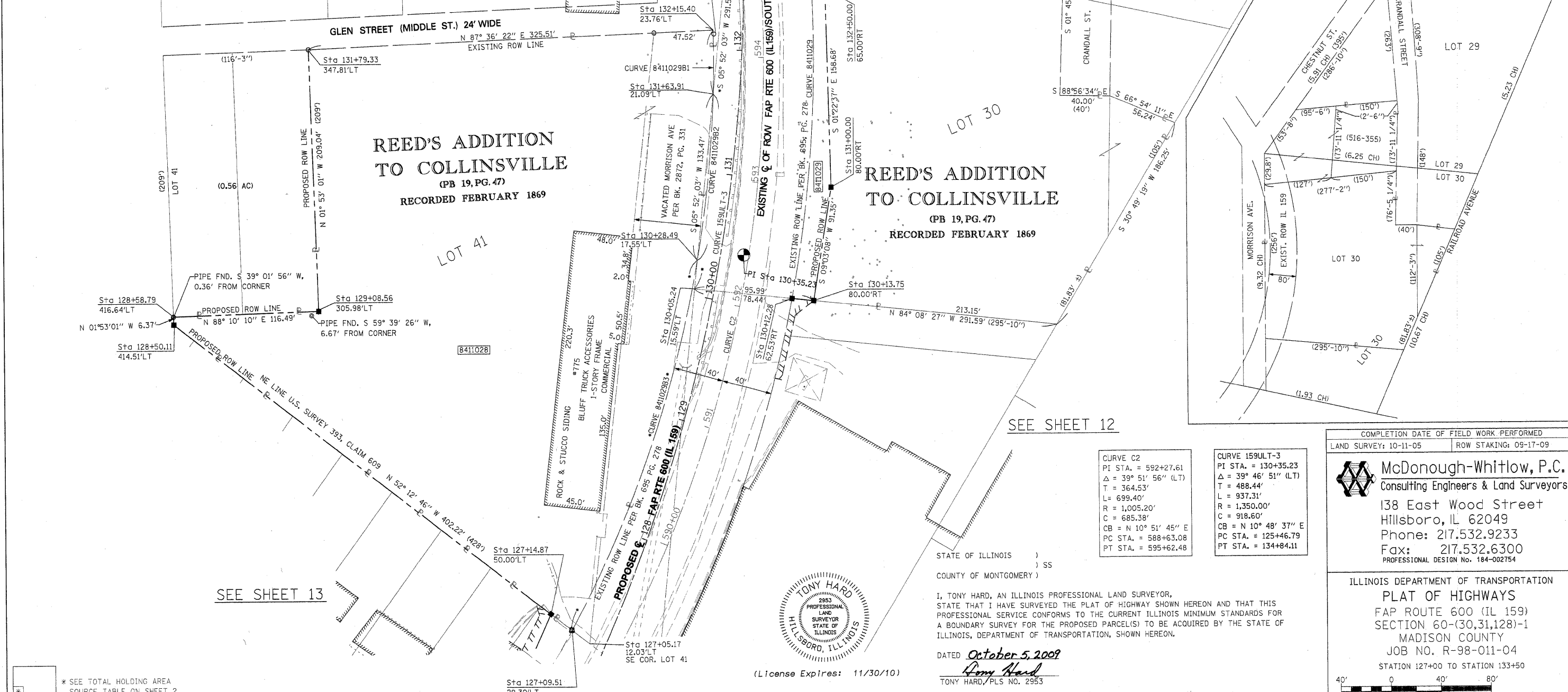
SEE SHEET 15

SEE BASIS OF COORDINATES AND BEARINGS STATEMENT ON SHEET 2

COORDINATE TABLE			
STATION	OFFSET	NORTH	EAST
127+14.87	50.00' LT	726,786.8446	349,219.3511
127+09.51	29.30' LT	726,773.7643	349,236.2219
128+50.11	414.51' LT	727,020.2171	348,918.3505
128+58.79	416.64' LT	727,026.5870	348,918.1410
129+08.56	305.98' LT	727,030.3080	349,034.5744
130+28.49	17.55' LT	727,069.3594	349,338.9354
131+79.33	347.81' LT	727,239.2398	349,027.7031
131+63.91	21.09' LT	727,202.1286	349,352.5797
132+15.40	23.76' LT	727,252.8359	349,352.9316
130+12.28	62.53' RT	727,038.4283	349,414.6178
130+13.75	80.00' RT	727,036.6378	349,432.0658
131+00.00	80.00' RT	727,126.4882	349,446.4382
132+50.00	65.00' RT	727,285.4850	349,442.6252
133+31.69	53.79' RT	727,370.5736	349,430.1173
133+32.47	47.81' RT	727,371.1100	349,424.1035
125+46.79	PC	726,617.3704	349,188.5743
134+84.11	PT	727,519.6675	349,360.8661
130+35.23	PI	727,037.3509	349,437.9482

<b>CURVE 8411029</b> L = 334.24' R = 1045.20' C = 332.82' CB = N 01° 38' 00" E	<b>CURVE 8411029B1</b> L = 50.71' R = 965.20' C = 50.71' CB = S 00° 23' 52" W
<b>CURVE 8411029B2</b> L = 133.58' R = 965.20' C = 133.47' CB = S 05° 52' 03" W	<b>CURVE 8411029B3</b> L = 314.32' R = 965.20' C = 312.93' CB = S 19° 09' 41" W

SEE SHEET 46 FOR CONTROL POINTS WITH CROSSIES  
(a) - SET DRILL HOLE WITH MAG NAIL  
(b) - SET MAG NAIL OR LANDSCAPE NAIL



SPACE RESERVED FOR RECORDING OFFICER

\* SEE TOTAL HOLDING AREA SOURCE TABLE ON SHEET 2

PARCEL NO.	OWNER	TOTAL HOLDING ACRES	FEE SIMPLE ACQUISITION				REMAINDER ACRES	EASEMENTS		PERMANENT TAX NUMBER	PROPERTY ACQUIRED BY
			GROSS ACRES	SO. FT.	PREVIOUSLY DEDICATED AND/OR USED ACRES	NET ACRES		PE = PERMANENT TE = TEMPORARY ACRES	EASEMENT PURPOSE		
8411028	RONALD R. POLETTE TITLE REPORT NO. MA-3440.0	2.8454	2.8454	123,946	-	2.8454	123,946	0	-	13-2-21-34-13-301-023	
8411029	VICTOR A. PACEWIC, AS TRUSTEE UNDER THE PROVISIONS OF A TRUST AGREEMENT DATED THE 12TH DAY OF MAY, 2004, KNOWN AS THE VICTOR A. PACEWIC TRUST AS TO A 1/4 INTEREST, EDWARD PACEWIC, AS TO AN UNDIVIDED 1/4 INTEREST, ALEXANDER PACEWIC AS TO AN UNDIVIDED 1/4 INTEREST AND DANIEL PACEWIC AS TO AN UNDIVIDED 1/4 INTEREST TITLE REPORT NO. MA-3432.0	2.3194	0.6591	28,712	0,5564	24,236	0.1027	4,476	1.6603	13-2-21-34-13-302-002 13-2-21-34-13-302-002.001	

<b>CURVE C2</b> PI STA. = 592+27.61 Δ = 39° 51' 56" (LT) T = 364.53' L = 699.40' R = 1,005.20' C = 685.38' CB = N 10° 51' 45" E PC STA. = 588+63.08 PT STA. = 595+62.48
--

<b>CURVE 159ULT-3</b> PI STA. = 130+35.23 Δ = 39° 46' 51" (LT) T = 488.44' L = 937.31' R = 1,350.00' C = 918.60' CB = N 10° 48' 37" E PC STA. = 125+46.79 PT STA. = 134+84.11
--



STATE OF ILLINOIS )  
COUNTY OF MONTGOMERY ) SS  
I, TONY HARD, AN ILLINOIS PROFESSIONAL LAND SURVEYOR, STATE THAT I HAVE SURVEYED THE PLAT OF HIGHWAY SHOWN HEREON AND THAT THIS PROFESSIONAL SERVICE CONFORMS TO THE CURRENT ILLINOIS MINIMUM STANDARDS FOR A BOUNDARY SURVEY FOR THE PROPOSED PARCEL(S) TO BE ACQUIRED BY THE STATE OF ILLINOIS, DEPARTMENT OF TRANSPORTATION, SHOWN HEREON.  
DATED October 5, 2009  
Tony Hard  
TONY HARD, PLS. NO. 2953  
(License Expires: 11/30/10)

COMPLETION DATE OF FIELD WORK PERFORMED  
LAND SURVEY: 10-11-05 ROW STAKING: 09-17-09

**McDonough-Whitlow, P.C.**  
Consulting Engineers & Land Surveyors  
138 East Wood Street  
Hillsboro, IL 62049  
Phone: 217.532.9233  
Fax: 217.532.6300  
PROFESSIONAL DESIGN No. 184-002754

ILLINOIS DEPARTMENT OF TRANSPORTATION  
**PLAT OF HIGHWAYS**  
FAP ROUTE 600 (IL 159)  
SECTION 60-(30,31,28)-1  
MADISON COUNTY  
JOB NO. R-98-011-04  
STATION 127+00 TO STATION 133+50

SCALE: 1" = 40' SHEET 14 OF 46

ILLINOIS DEPARTMENT OF TRANSPORTATION  
DIVISION OF HIGHWAYS/REGION 5/DISTRICT 8  
1102 EASTPORT PLAZA DRIVE  
COLLINSVILLE, ILLINOIS 62234-6198

F.A.P. RTE.	SECTION	COUNTY	TOTAL SHEETS	SHEET NO.
600	60-(30,31,28)-1	MADISON	399	195
CONTRACT NO. 76830				

FED. ROAD DIST. NO. ILLINOIS FED. AID PROJECT