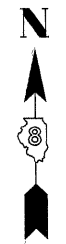
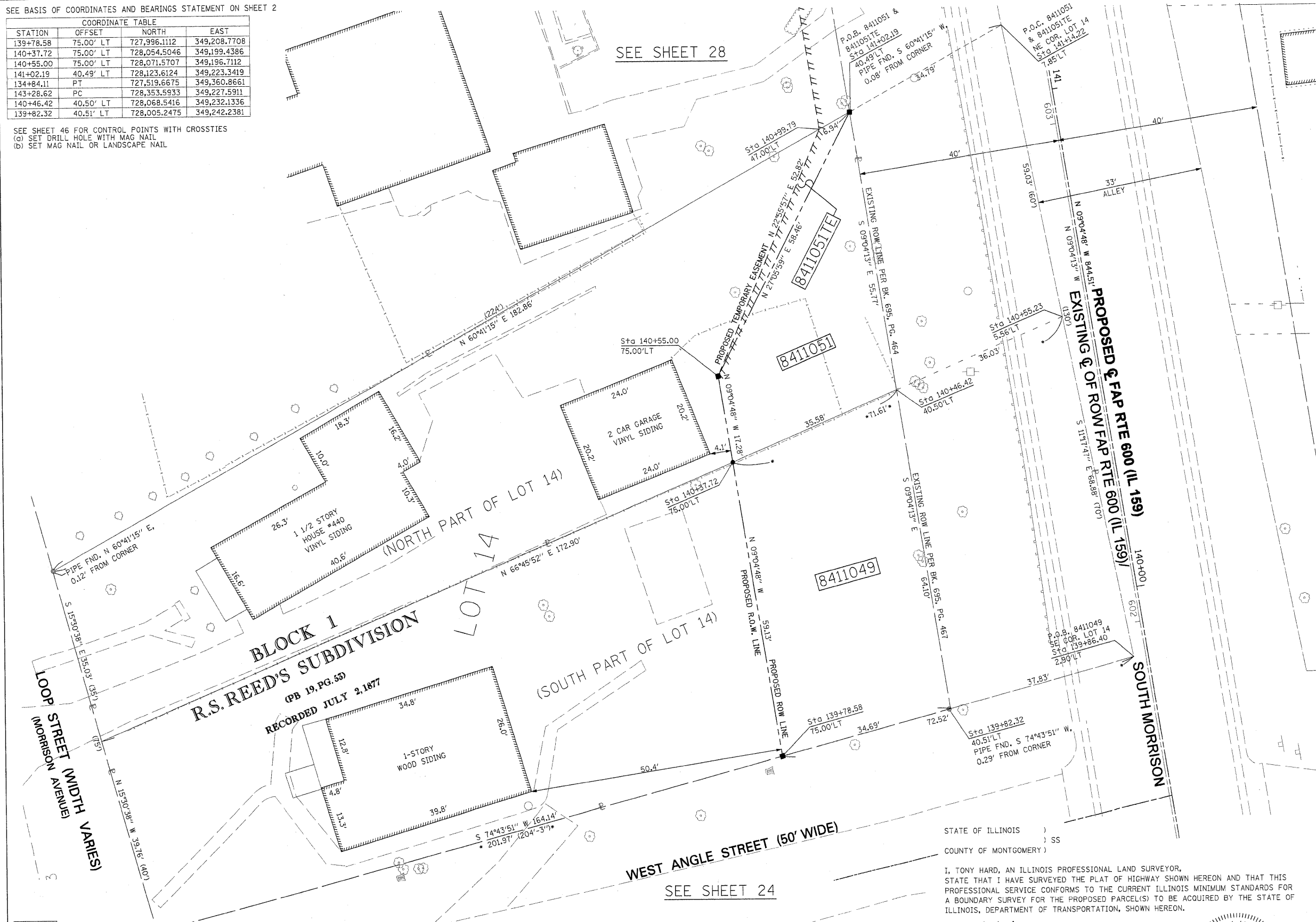


PART OF THE NW 14 OF SECTION 34, T3N, R8W, OF THE 3RD PM, MADISON COUNTY, ILLINOIS

SEE BASIS OF COORDINATES AND BEARINGS STATEMENT ON SHEET 2

COORDINATE TABLE			
STATION	OFFSET	NORTH	EAST
139+78.58	75.00' LT	727,996.1112	349,208.7708
140+37.72	75.00' LT	728,054.5046	349,199.4386
140+55.00	75.00' LT	728,071.5707	349,196.7112
141+02.19	40.49' LT	728,123.6124	349,223.3419
134+84.11	PT	727,519.6675	349,360.8661
143+28.62	PC	728,353.5933	349,227.5911
140+46.42	40.50' LT	728,068.5416	349,232.1336
139+82.32	40.51' LT	728,005.2475	349,242.2381

SEE SHEET 46 FOR CONTROL POINTS WITH CROSSIES
 (a) SET DRILL HOLE WITH MAG NAIL
 (b) SET MAG NAIL OR LANDSCAPE NAIL



SPACE RESERVED FOR RECORDING OFFICER

SEE SHEET 25

WEST ANGLE STREET (50' WIDE)
 SEE SHEET 24

STATE OF ILLINOIS)
 COUNTY OF MONTGOMERY) SS

I, TONY HARD, AN ILLINOIS PROFESSIONAL LAND SURVEYOR, STATE THAT I HAVE SURVEYED THE PLAT OF HIGHWAY SHOWN HEREON AND THAT THIS PROFESSIONAL SERVICE CONFORMS TO THE CURRENT ILLINOIS MINIMUM STANDARDS FOR A BOUNDARY SURVEY FOR THE PROPOSED PARCEL(S) TO BE ACQUIRED BY THE STATE OF ILLINOIS, DEPARTMENT OF TRANSPORTATION, SHOWN HEREON.

DATED *October 5, 2009*
Tony Hard
 TONY HARD, PLS NO. 2953



McDonough-Whitlow, P.C.
 Consulting Engineers & Land Surveyors
 138 East Wood Street
 Hillsboro, IL 62049
 Phone: 217.532.9233
 Fax: 217.532.6300
 PROFESSIONAL DESIGN NO. 184-002754

ILLINOIS DEPARTMENT OF TRANSPORTATION
 PLAT OF HIGHWAYS
 FAP ROUTE 600 (IL 159)
 SECTION 60-(30,31,128)-1
 MADISON COUNTY
 JOB NO. R-98-011-04
 STATION 139+75 TO STATION 141+25

SCALE: 1" = 10'
 SHEET 26 OF 46

ILLINOIS DEPARTMENT OF TRANSPORTATION
 DIVISION OF HIGHWAYS/REGION 5/DISTRICT 8
 1102 EASTPORT PLAZA DRIVE
 COLLINGSVILLE, ILLINOIS 62234-6198

F.A.P. RTE.	SECTION	COUNTY	TOTAL SHEETS	SHEET NO.
600	60-(30,31,128)-1	MADISON	399	207

CONTRACT NO. 76830

(License Expires: 11/30/10)
 COMPLETION DATE OF FIELD WORK PERFORMED
 LAND SURVEY: 10-11-05 ROW STAKING: 09-17-09

* SEE TOTAL HOLDING AREA SOURCE TABLE ON SHEET 2

PARCEL NO.	OWNER	TOTAL HOLDING ACRES	GROSS		FEE SIMPLE ACQUISITION PREVIOUSLY DEDICATED AND/OR USED		NET		REMAINDER ACRES	EASEMENTS		PERMANENT TAX NUMBER	PROPERTY ACQUIRED BY
			ACRES	SQ. FT.	ACRES	SQ. FT.	ACRES	SQ. FT.		ACRES	SQ. FT.		
8411049	MATTHEW CONNER & ROGER A. CONNER, AS JOINT TENANTS TITLE REPORT NO. MA-3578.0	0.2538	0.1043	4,544	0.0555	2,419	0.0488	2,125	0.1495			13-2-21-34-09-101-014	
8411051	WALTER W. OGLE TITLE REPORT NO. MA-3579.0	0.1787	0.0289	1,260	0	0	0.0289	1,260	0.1498	TE 0.0026	112	13-2-21-34-09-101-013	