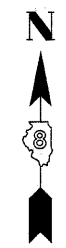


PART OF THE NW 14 OF SECTION 34, T3N, R8W, OF THE 3RD PM, MADISON COUNTY, ILLINOIS

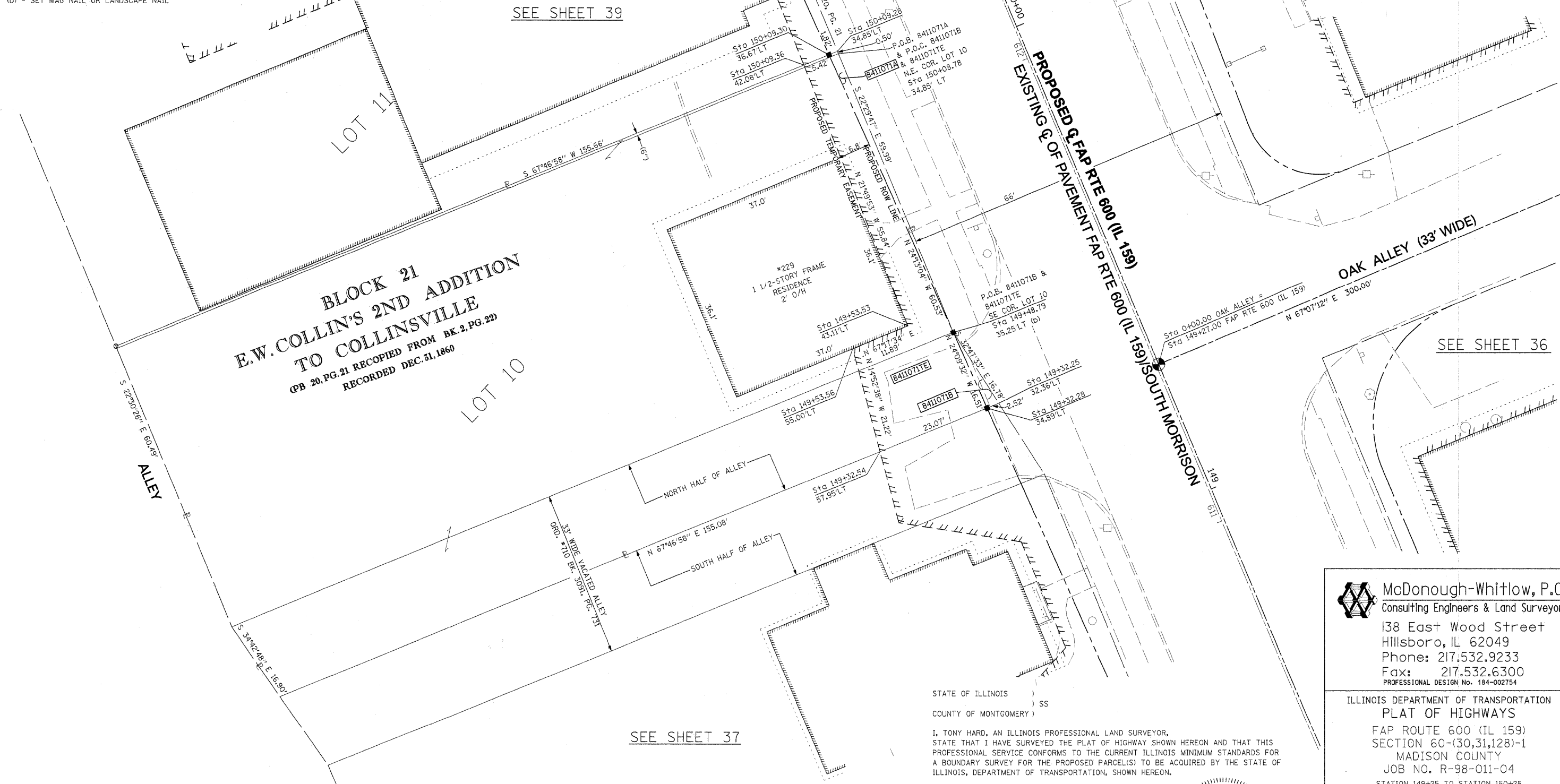
SEE BASIS OF COORDINATES AND BEARINGS STATEMENT ON SHEET 2

COORDINATE TABLE			
STATION	OFFSET	NORTH	EAST
149+32.28	34.89' LT	728,903.2215	348,981.9977
149+32.25	32.36' LT	728,904.1748	348,984.3316
150+08.78	34.85' LT	728,973.7098	348,952.2872
150+09.28	34.85' LT	728,974.1717	348,952.0959
145+14.80	PT	728,532.1491	349,176.4582
155+02.21	PC	729,441.8691	348,792.5492
150+09.30	36.67' LT	728,973.4842	348,950.4127
149+48.79	35.25' LT	728,918.2848	348,975.2410

SEE SHEET 46 FOR CONTROL POINTS WITH CROSS-TIES  
 (a) - SET DRILL HOLE WITH MAG NAIL  
 (b) - SET MAG NAIL OR LANDSCAPE NAIL



SPACE RESERVED FOR RECORDING OFFICER



**BLOCK 21**  
**E.W. COLLINS' 2ND ADDITION**  
**TO COLLINSVILLE**  
 (PB 20, PG. 21 RECOPIED FROM BK. 2, PG. 22)  
 RECORDED DEC. 31, 1860

SEE SHEET 37

SEE SHEET 36

\* SEE TOTAL HOLDING AREA SOURCE TABLE ON SHEET 2

STATE OF ILLINOIS )  
 ) SS  
 COUNTY OF MONTGOMERY )

I, TONY HARD, AN ILLINOIS PROFESSIONAL LAND SURVEYOR, STATE THAT I HAVE SURVEYED THE PLAT OF HIGHWAY SHOWN HEREON AND THAT THIS PROFESSIONAL SERVICE CONFORMS TO THE CURRENT ILLINOIS MINIMUM STANDARDS FOR A BOUNDARY SURVEY FOR THE PROPOSED PARCEL(S) TO BE ACQUIRED BY THE STATE OF ILLINOIS, DEPARTMENT OF TRANSPORTATION, SHOWN HEREON.

DATED October 5, 2009  
*Tony Hard*  
 TONY HARD, PLS NO. 2953



**McDonough-Whitlow, P.C.**  
 Consulting Engineers & Land Surveyors  
 138 East Wood Street  
 Hillsboro, IL 62049  
 Phone: 217.532.9233  
 Fax: 217.532.6300  
 PROFESSIONAL DESIGN NO. 184-002754

ILLINOIS DEPARTMENT OF TRANSPORTATION  
 PLAT OF HIGHWAYS  
 FAP ROUTE 600 (IL 159)  
 SECTION 60-(30,31,128)-1  
 MADISON COUNTY  
 JOB NO. R-98-011-04  
 STATION 149+25 TO STATION 150+25

SCALE: 1" = 10'  
 SHEET 38 OF 46

PARCEL NO.	OWNER	TOTAL HOLDING ACRES	FEE SIMPLE ACQUISITION GROSS		REMAINDER ACRES	EASEMENTS		PERMANENT TAX NUMBER	PROPERTY ACQUIRED BY
			ACRES	SQ. FT.		PE = PERMANENT TE = TEMPORARY ACRES	SQ. FT.		
8411071	MIGUEL VALDEZ & HECTOR RAMIREZ, AS JOINT TENANTS TITLE COMMITMENT NO. MA-3588.0	0.2750	A=0.0013 B=0.0005	A=55 B=21	0.2732	TE 0.0188	818	GRADING	13-2-21-34-09-101-003

F.A.P. RTE.	SECTION	COUNTY	TOTAL SHEETS	SHEET NO.
600	60-(30,31,128)-1	MADISON	399	200
COMPLETION DATE OF FIELD WORK PERFORMED		CONTRACT NO. 76830		
LAND SURVEY: 10-11-05		ROW STAKING: 09-17-09		
FED. ROAD DIST. NO. [ILLINOIS] FED. AID PROJECT				