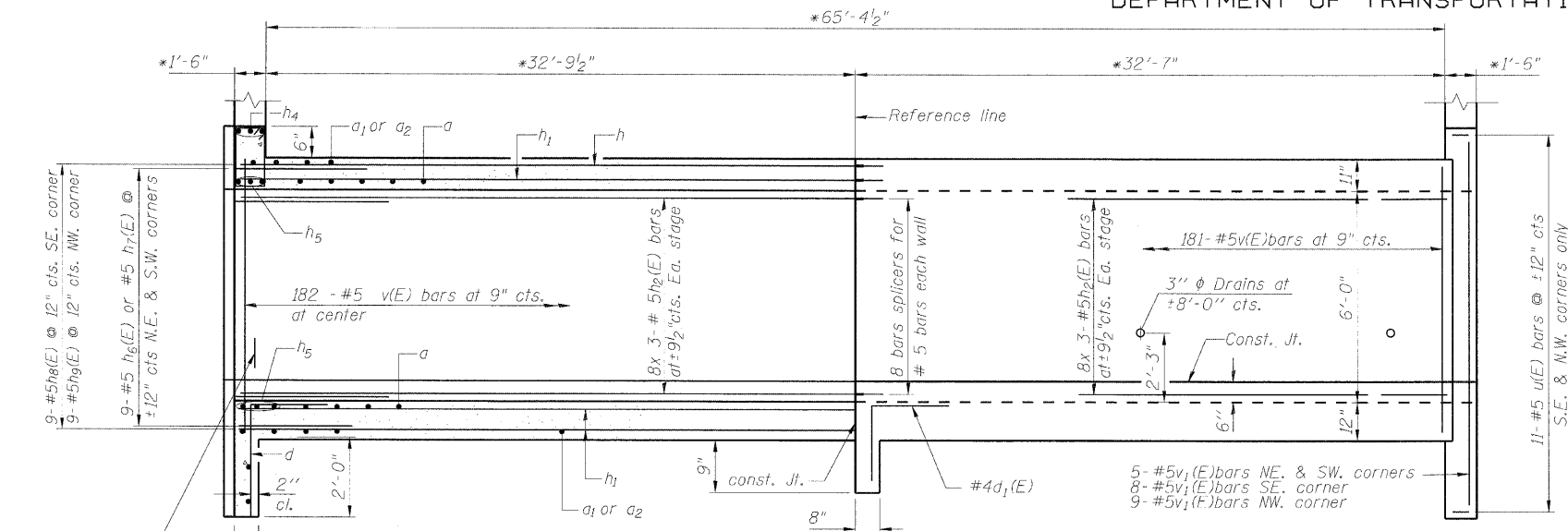


STATE OF ILLINOIS  
DEPARTMENT OF TRANSPORTATION

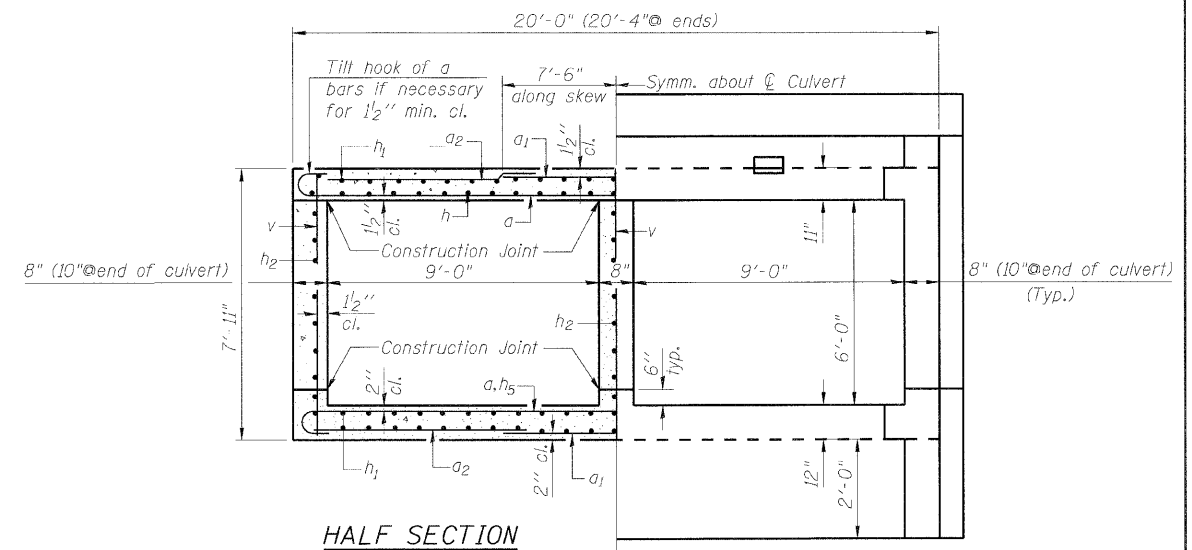


**HALF LONG SECTION**  
Showing bars in Center Wall

**HALF ELEVATION**  
Showing bars in Outside Wall

#5v (E) bars  
3 each Northeast & Southwest corners  
2 each South east & Northwest corner

\*Dimensions are at right angles to Reference line



**HALF SECTION THRU BARREL**

**HALF END ELEVATION**

**BARS h30 (E)**

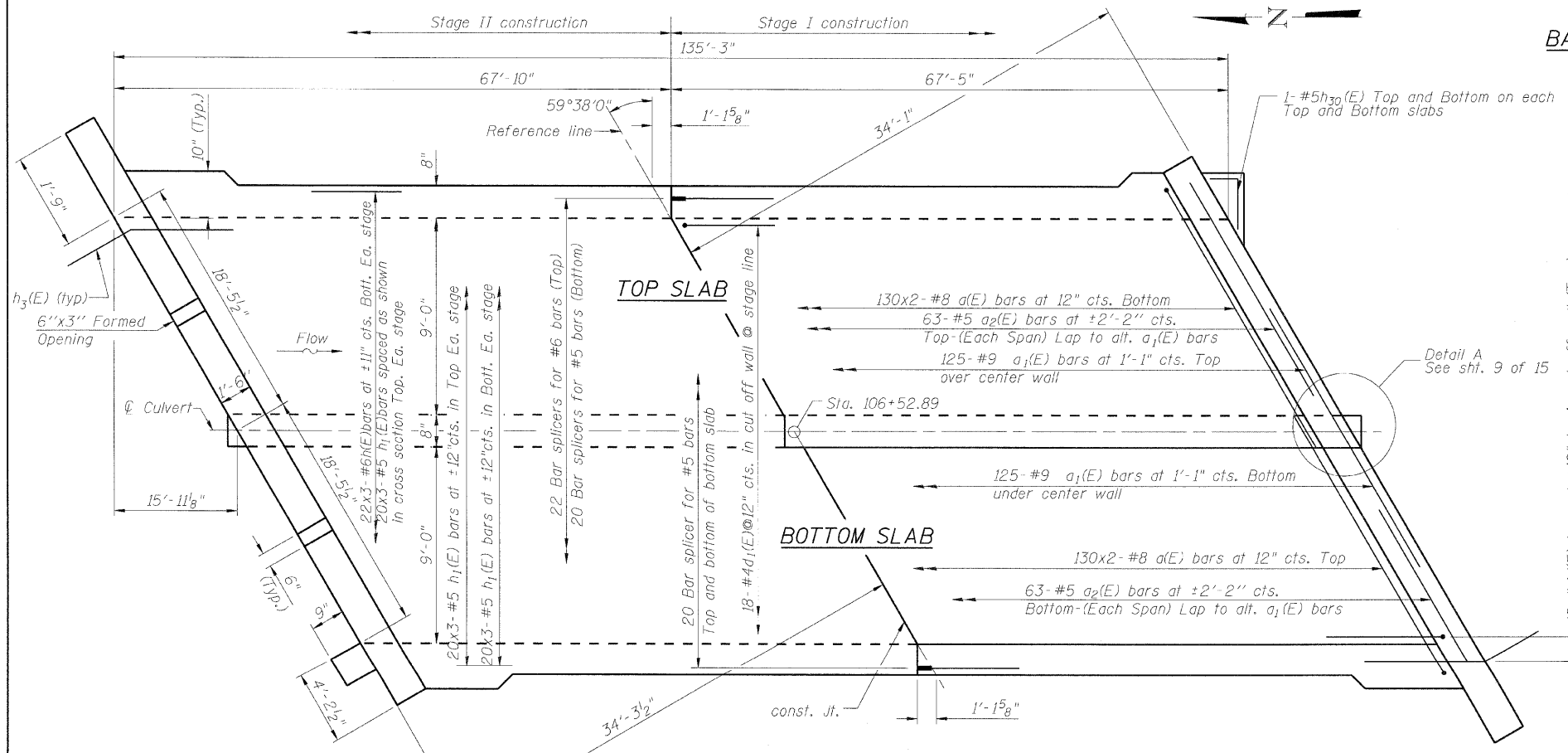
**BARS d(E) & d1(E)**

**BAR a (E)**

Notes:  
Bars indicated thus 12x4-#5 etc. indicates 12 lines of bars with 4 lengths per line.  
See sheets 6 & 7 of 15 for additional bar placement details.

**BILL OF MATERIAL**

Bar	No.	Size	Length	Shape	
a (E)	520	#8	22'-7"	C	
a1(E)	250	#9	15'-0"	—	
a2(E)	252	#5	14'-0"	—	
d (E)	36	#4	4'-6"	┌	
d1(E)	18	#4	3'-3"	┌	
d2(E)	88	#4	2'-3"	┌	
d3(E)	44	#6	2'-8"	┌	
d4(E)	44	#4	2'-4"	┌	
d5(E)	44	#6	3'-9"	┌	
d6(E)	44	#4	3'-5"	┌	
e (E)	10	#4	22'-5"	—	
e1(E)	10	#4	19'-9"	—	
h (E)	132	#6	24'-0"	—	
h1(E)	360	#5	23'-9"	—	
h2(E)	144	#5	24'-0"	—	
h3(E)	40	#5	4'-0"	┌	
h4(E)	18	#8	16'-8"	┌	
h5(E)	24	#7	22'-8"	┌	
h6(E)	18	#5	6'-10"	┌	
h7(E)	18	#5	3'-2"	┌	
h8(E)	9	#5	6'-5"	┌	
h9(E)	9	#5	5'-0"	┌	
h30(E)	4	#5	3'-9"	┌	
u (E)	22	#5	6'-6"	┌	
s (E)	44	#4	5'-5"	□	
s1(E)	44	#4	5'-3"	□	
v (E)	554	#5	7'-7"	—	
v1(E)	27	#5	10'-0"	—	
Concrete Box Culverts				Cu. Yd.	270.6
Reinforcement Bars (Epoxy coated)				Pound	73,740



**SHOWING OUTLINES**

**SHOWING REINFORCEMENT**

**PLAN**

Min. bar laps  
(unless noted otherwise)  
# 8 bar = 3'-8"  
# 7 bar = 2'-9"  
# 6 bar = 2'-0"  
# 5 bar = 1'-8"

DESIGNED - KRG
CHECKED - MJK
DRAWN - GSJ
CHECKED - MJK

DB-H-L

**CULVERT BARREL  
STRUCTURE NO: 082-2044**

SHEET NO. 5 15 SHEETS	F.A.P. RTE.	SECTION	COUNTY	TOTAL SHEETS	SHEET NO.
	600	60-(30,31,128)-1	St. Clair	399	246
STRUCTURE NO: 082-2044			CONTRACT NO. 76830		
FED. ROAD DIST. NO. _		ILLINOIS FED. AID PROJECT			

MID-AMERICA ENGINEERING SERVICES