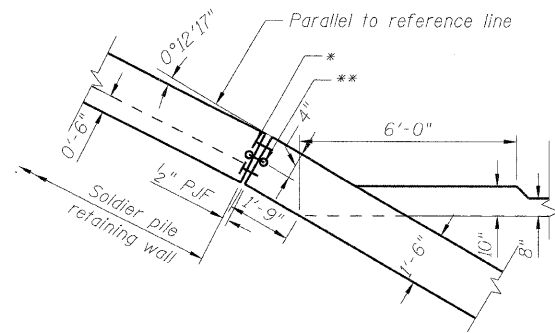
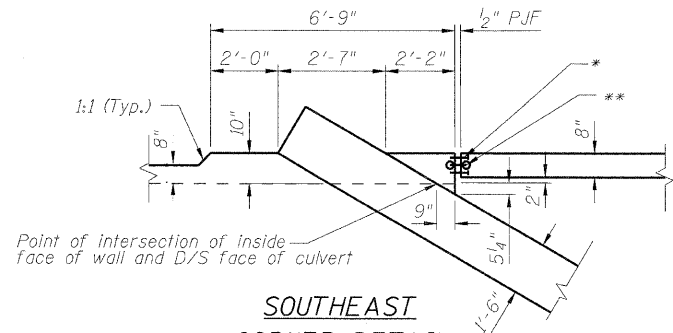


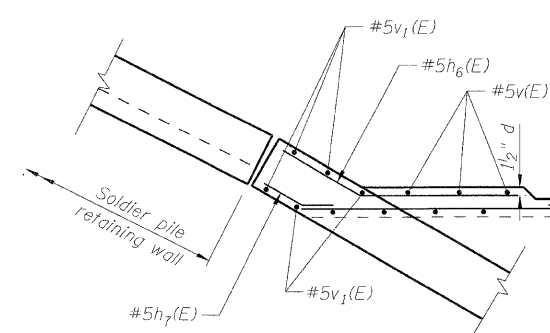
STATE OF ILLINOIS
DEPARTMENT OF TRANSPORTATION



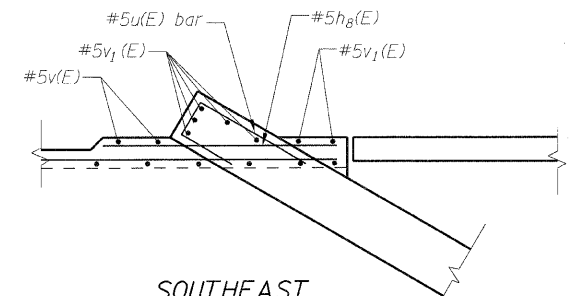
**NORTHEAST
CORNER DETAIL**
(showing dimensions)



**SOUTHEAST
CORNER DETAIL**
(showing dimensions)



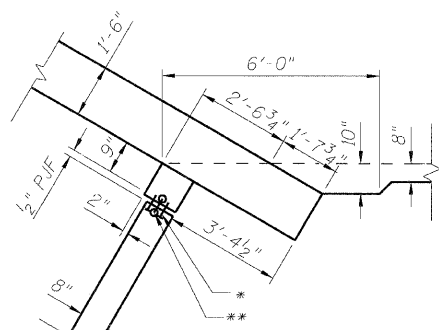
**NORTHEAST
CORNER DETAIL**
(showing reinforcement details)



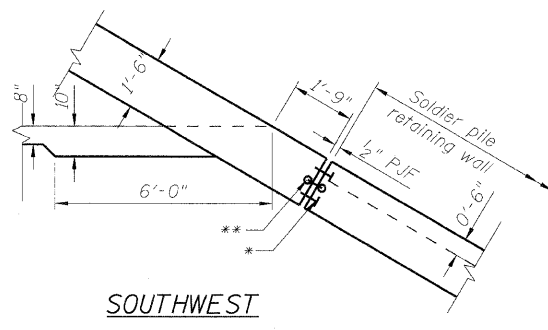
**SOUTHEAST
CORNER DETAIL**
(showing reinforcement details)

* Concrete nails (flat head C.S.)
1" long at 12" cts. vertical

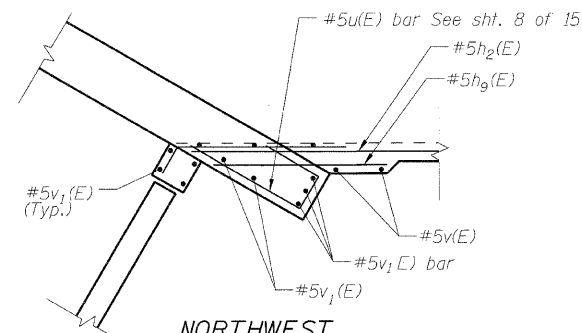
** 6" Hollow bulb dumb bell type nonmetallic water seal
(6" from top of wall to top of Apron floor)
cost included with concrete structures.



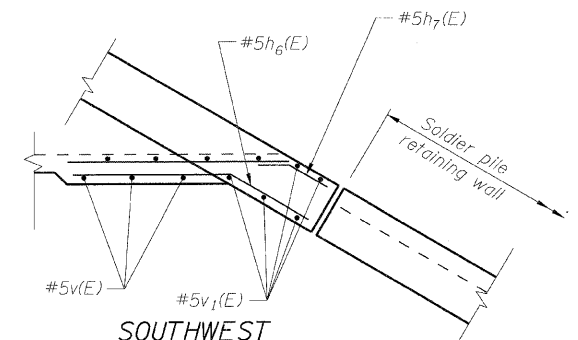
**NORTHWEST
CORNER DETAIL**
(showing dimensions)



**SOUTHWEST
CORNER DETAIL**
(showing dimensions)



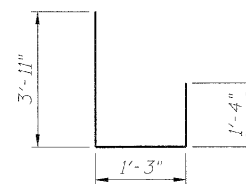
**NORTHWEST
CORNER DETAIL**
(showing reinforcement details)



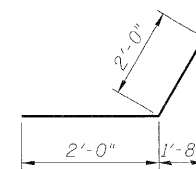
**SOUTHWEST
CORNER DETAIL**
(showing reinforcement details)

BAR DIMENSIONS

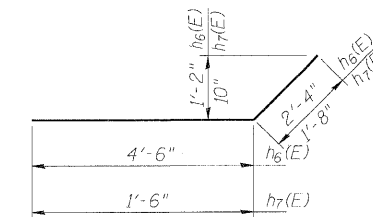
Bar	A	B
d ₃ (E)	1'-8"	1'-0"
d ₄ (E)	1'-8"	8"
d ₅ (E)	2'-9"	1'-0"
d ₆ (E)	2'-9"	8"



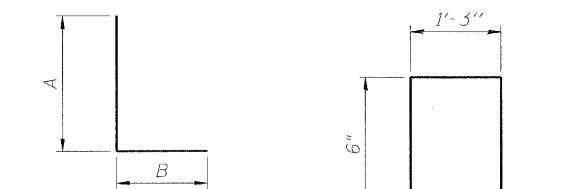
BARS u(E)



BAR h₃(E)

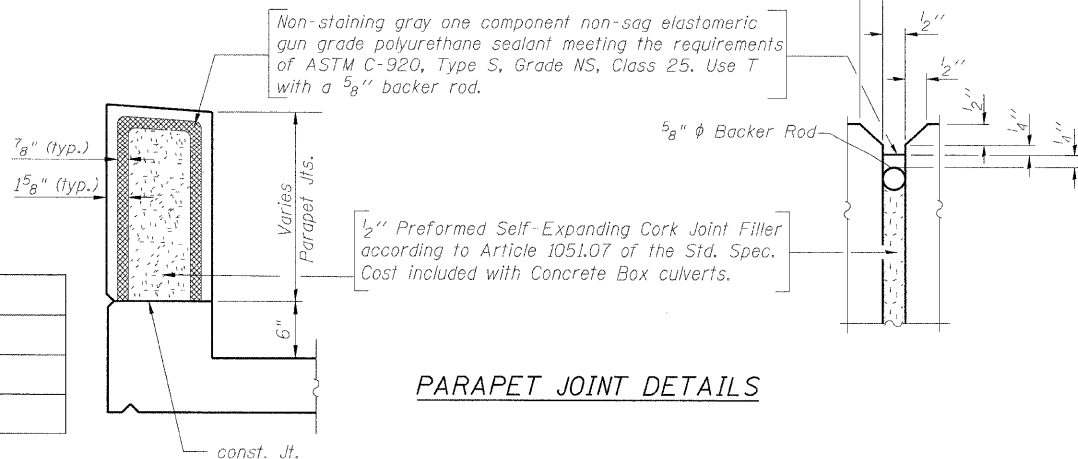


BARS h₆(E) & h₇(E)



BARS d₃(E) to d₆(E)

BARS d₂(E)



PARAPET JOINT DETAILS

DESIGNED - KRG
CHECKED - MJK
DRAWN - GSJ
CHECKED - MJK

**CULVERT DETAILS
STRUCTURE NO: 082-2044**

SHEET NO. 7 15 SHEETS	F.A.P. RTE.	SECTION	COUNTY	TOTAL SHEETS	SHEET NO.
	600	60-(30,31,128)-1	St. Clair	399	248
STRUCTURE NO: 082-2044			CONTRACT NO. 76830		
FED. ROAD DIST. NO. - ILLINOIS FED. AID PROJECT					

MID-AMERICA ENGINEERING SERVICES