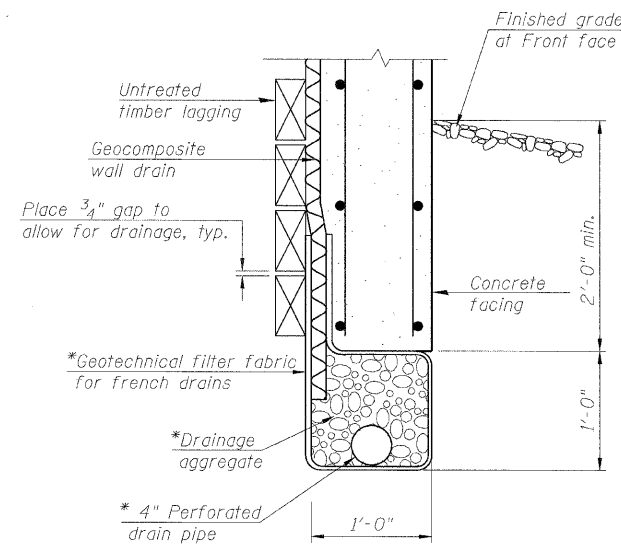
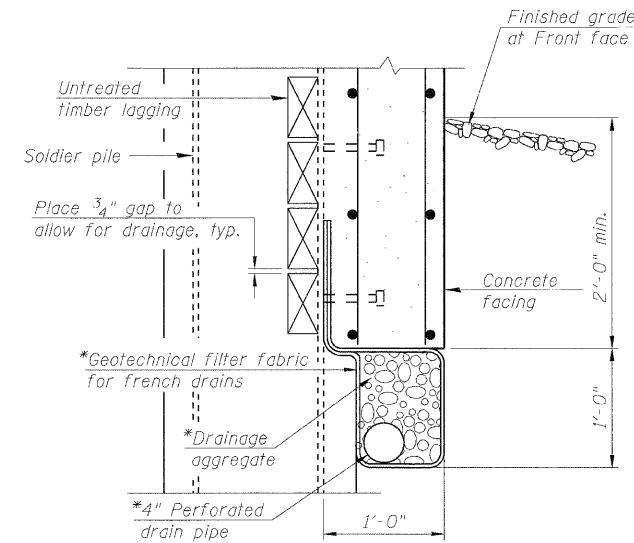


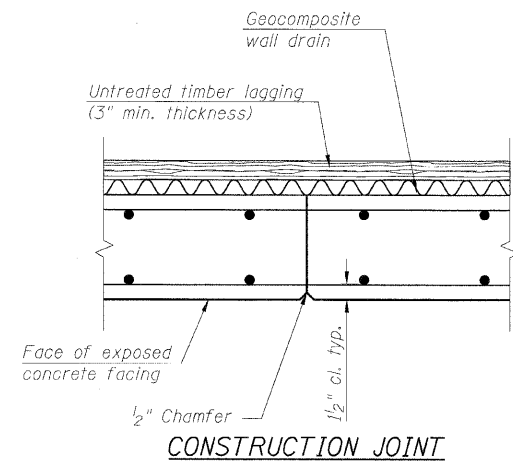
STATE OF ILLINOIS
DEPARTMENT OF TRANSPORTATION



**UNDER DRAIN DETAIL
BETWEEN SOLDIER PILES**



**UNDER DRAIN DETAIL
AT SOLDIER PILES**

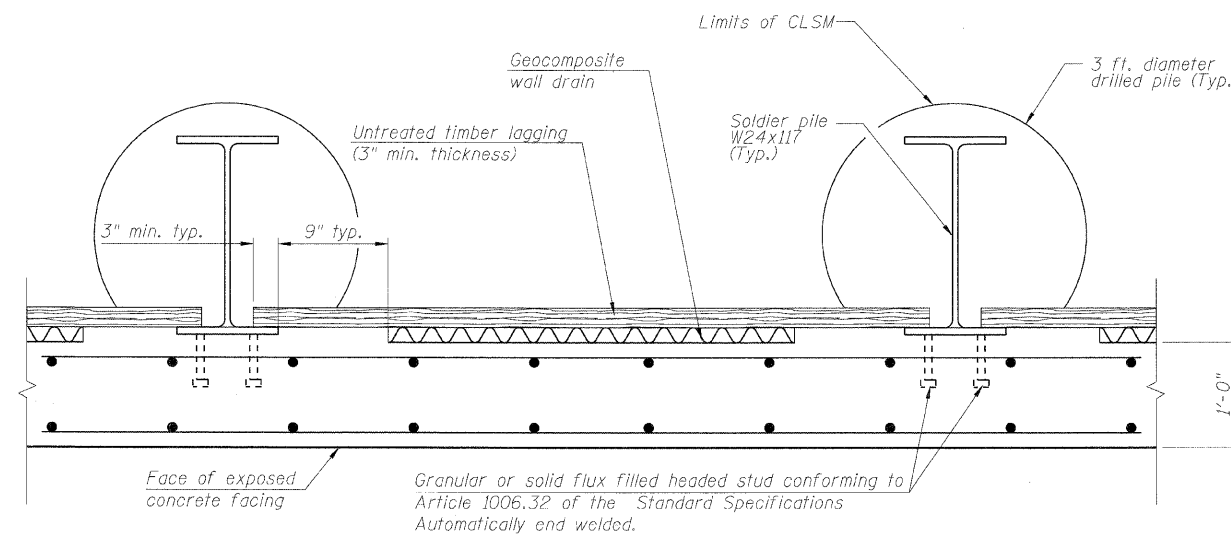


CONSTRUCTION JOINT

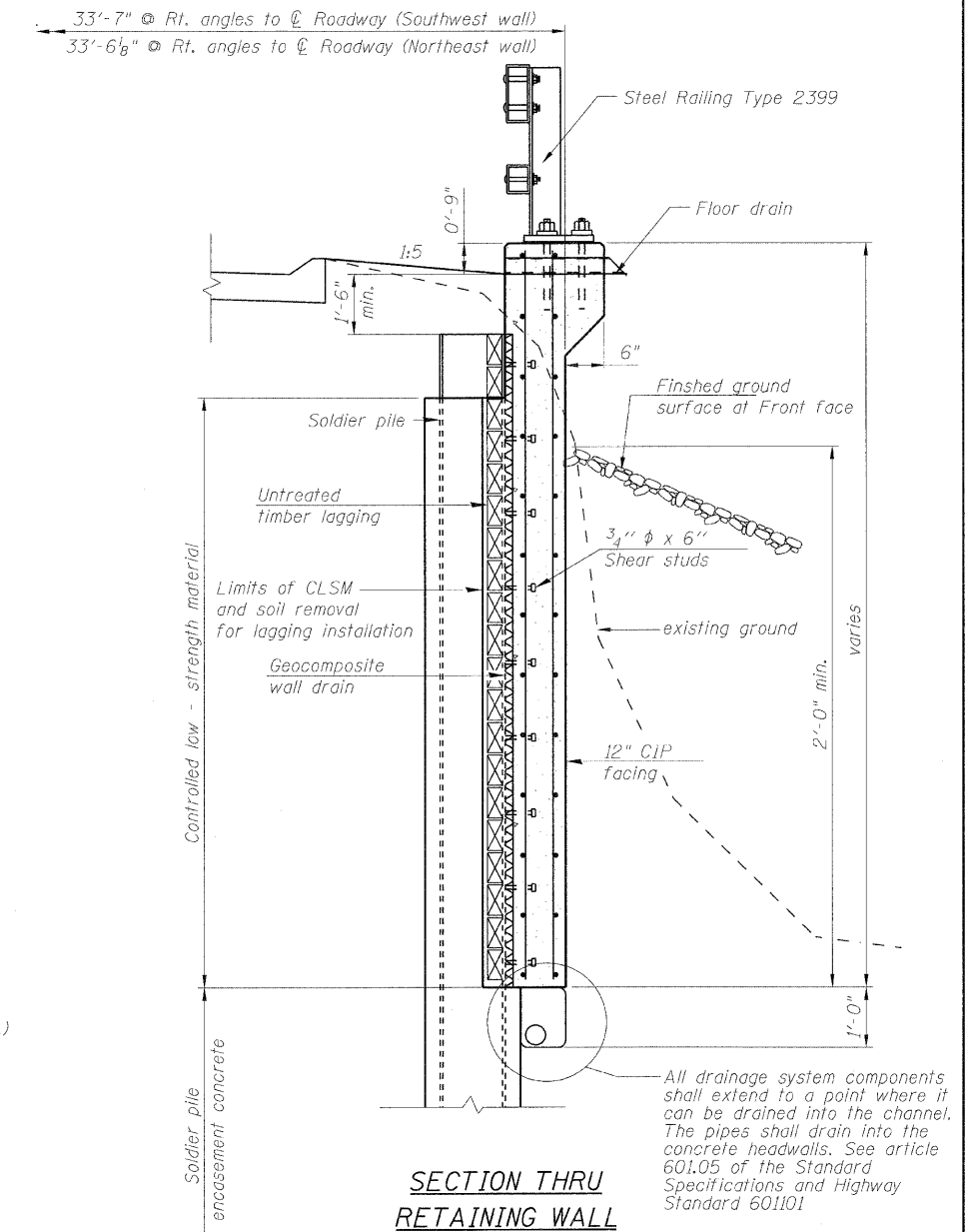
* Included in the cost of Pipe Underdrains for structures.

Note: The contractor is responsible for the design and performance of the lagging using no less than 3 in. nominal rough-sawn thickness and timber with a minimum allowable bending stress of 1000 psi.

* Included in the cost of Pipe Underdrains for structures.



TYPICAL PLAN THROUGH WALL



**SECTION THRU
RETAINING WALL**

| |
|----------------|
| DESIGNED - KRG |
| CHECKED - MJK |
| DRAWN - GSJ |
| CHECKED - MJK |

**SOLDIER PILE WALL DETAILS
STRUCTURE NO: 082-2044**

| | | | | | |
|---|---------------|------------------|--------------------|-----------------|--------------|
| SHEET NO. 11 15 SHEETS | F.A.P RTE. | SECTION | COUNTY | TOTAL SHEETS | SHEET NO. |
| | 600 | 60-(30,31,128)-1 | St. Clair | 399 | 252 |
| STRUCTURE NO: 082-2044 | | | CONTRACT NO. 76830 | | |
| FED. ROAD DIST. NO. _ ILLINOIS FED. AID PROJECT | | | | | |