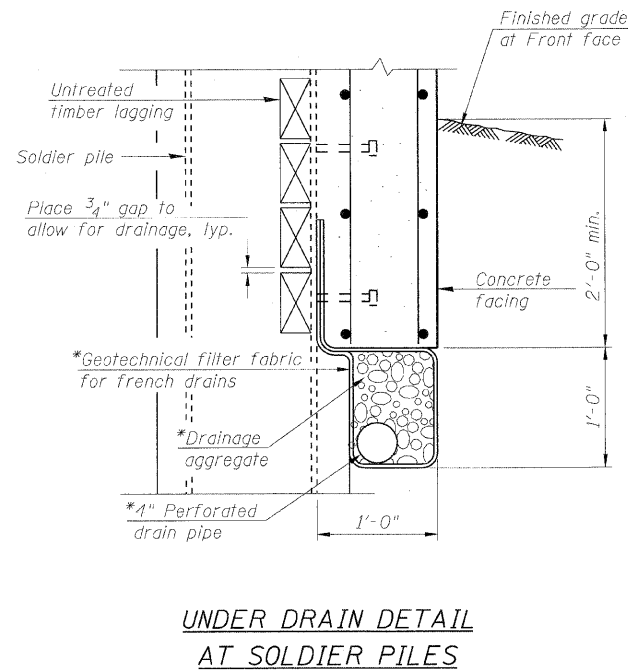
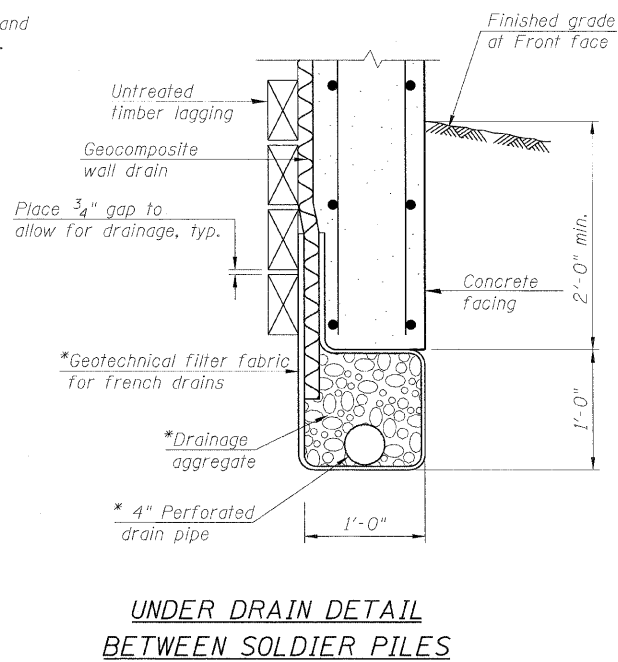
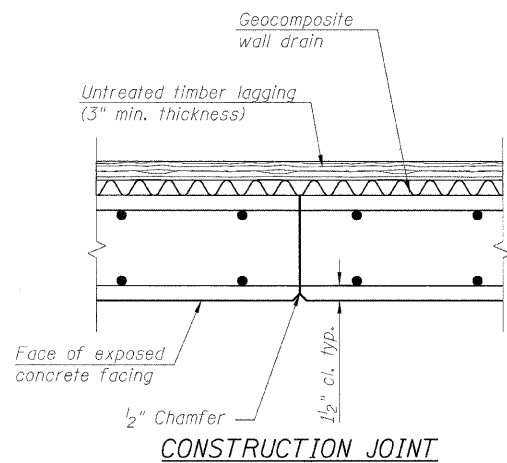
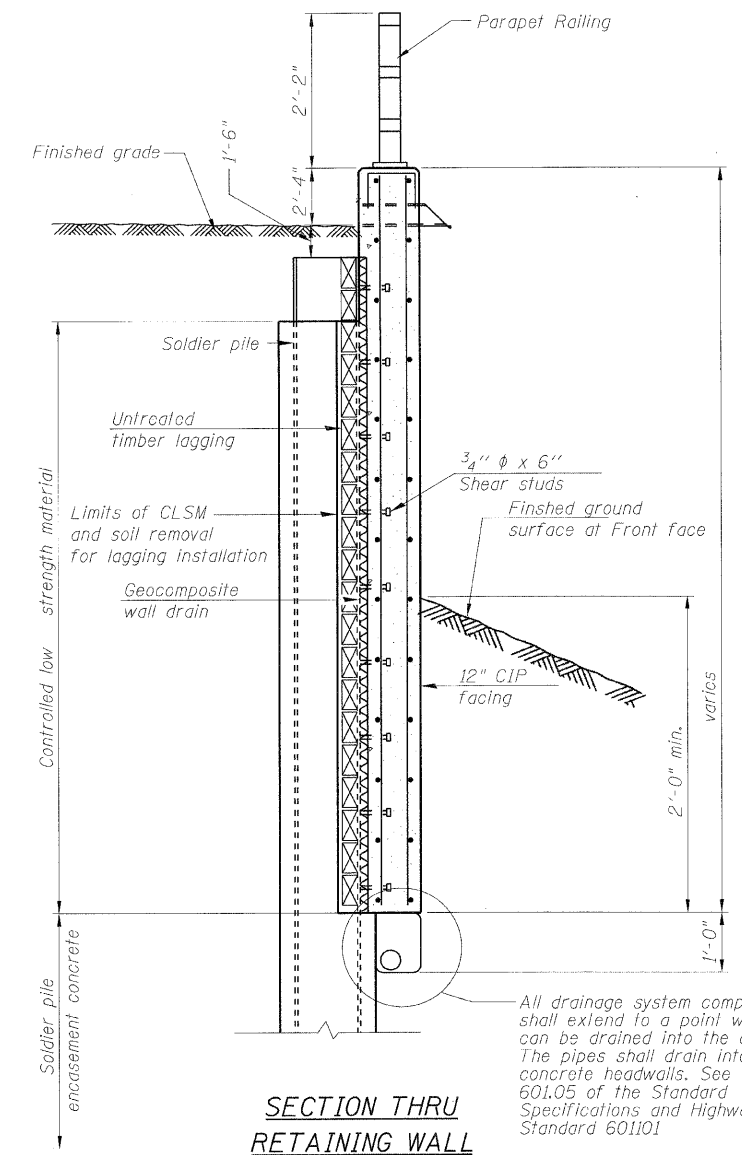


STATE OF ILLINOIS  
DEPARTMENT OF TRANSPORTATION

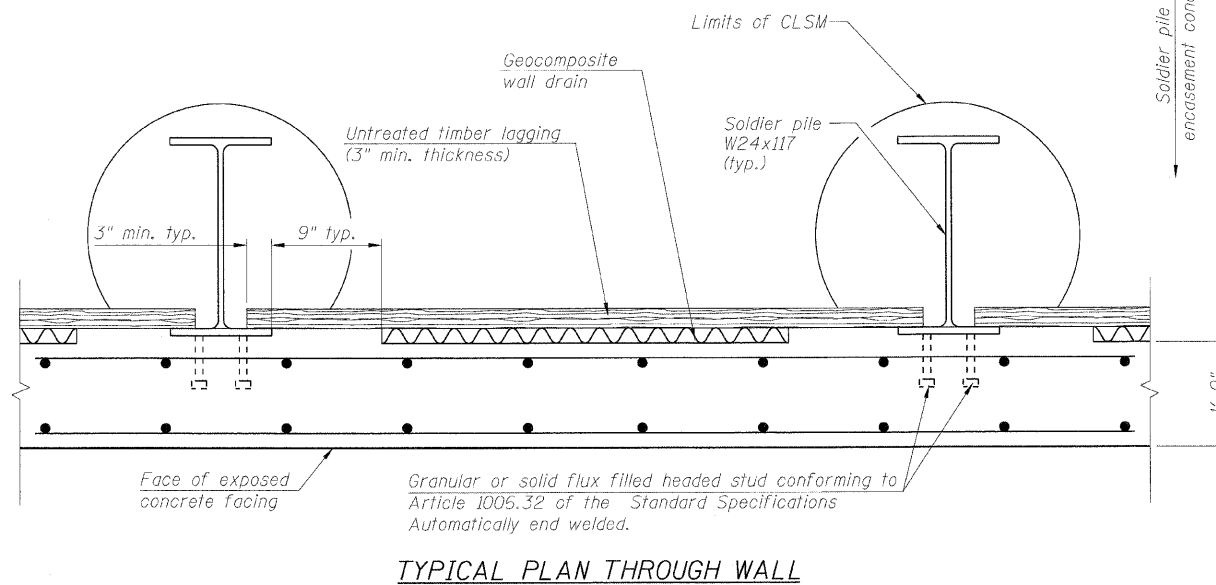
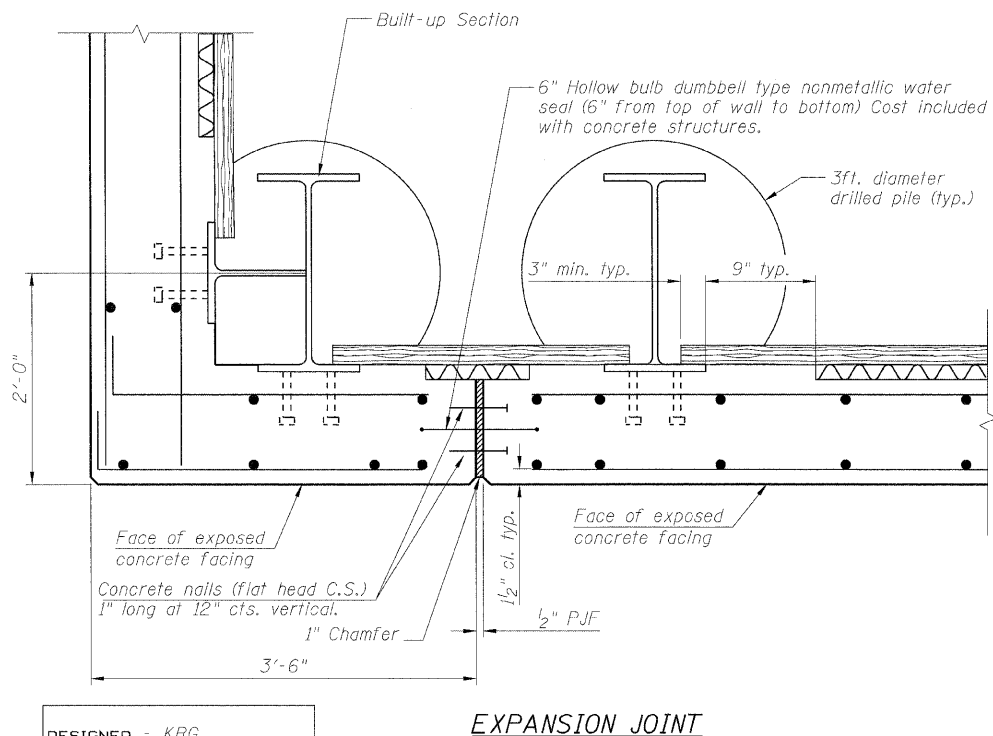
Note: The contractor is responsible for the design and performance of the lagging using no less than 3 in. nominal rough-sawn thickness and timber with a minimum allowable bending stress of 1000 psi.



\* Included in the cost of Pipe Underdrains for structures.



All drainage system components shall extend to a point where it can be drained into the channel. The pipes shall drain into the concrete headwalls. See article 601.05 of the Standard Specifications and Highway Standard 601101



|                |
|----------------|
| DESIGNED - KRG |
| CHECKED - MJK  |
| DRAWN - GSJ    |
| CHECKED - MJK  |

**SOLDIER PILE WALL DETAILS**

|   |                    |                             |                             |                     |                  |
|---|--------------------|-----------------------------|-----------------------------|---------------------|------------------|
| SHEET NO. 6<br>9 SHEETS                       | F.A.P. RTE.<br>600 | SECTION<br>60-(30,31,128)-1 | COUNTY<br>St. Clair/Madison | TOTAL SHEETS<br>399 | SHEET NO.<br>262 |
|   | RETAINING WALL 1   |                             |                             | CONTRACT NO. 76830  |                  |
| FED. ROAD DIST. NO. ILLINOIS FED. AID PROJECT |                    |                             |                             |                     |                  |

MID-AMERICA ENGINEERING SERVICES