

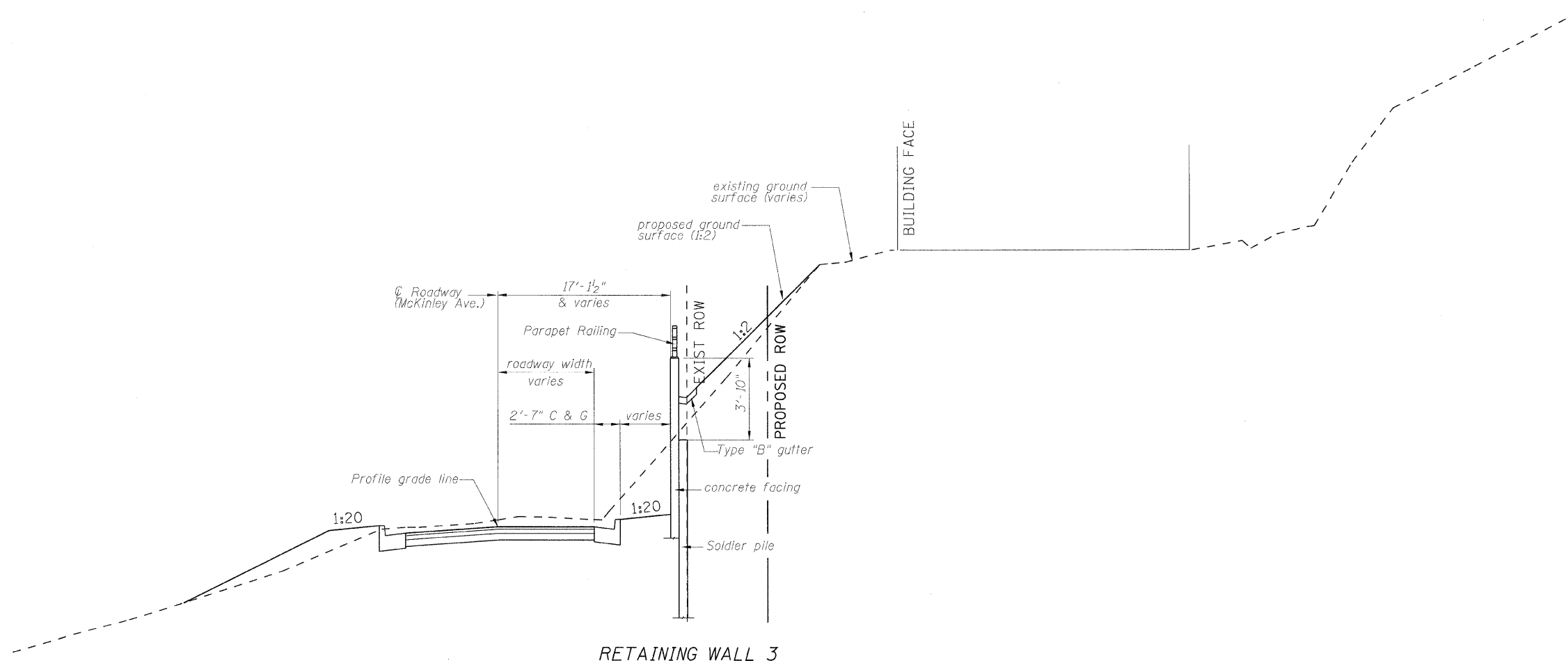
STATE OF ILLINOIS
DEPARTMENT OF TRANSPORTATION

GENERAL NOTES

1. Reinforcement bars shall conform to the requirements of ASTM A 706 Gr 60. See Special Provisions.
2. Reinforcement bars designated (E) shall be epoxy coated.
3. All exposed edges of concrete shall be bevelled $\frac{3}{4}$ ".
4. The geocomposite wall drain shall be constructed according to section 591 of the Standard Specifications. The contractor shall insure that the bottom, sides and the top edges are protected from soil entering or sealing the drain while placing the pervious fabric side of the drain towards the soil. Geocomposite wall drain shall be installed in stages as the excavation process proceeds downward. Splicing should be minimized, following proper splice practices to insure no long term soil contamination.
5. The buildings behind the retaining wall are susceptible to damage and the contractor shall not leave the excavations unsupported during construction as specified in the special provisions by using the top down placement of the lagging.

TOTAL BILL OF MATERIAL

Item	Unit	Quantity
Structure Excavation	Cu. Yd.	73
Concrete Structures	Cu. Yd.	31.4
Stud Shear connectors	Each	224
Reinforcement Bars, Epoxy Coated	Pound	4230
Parapet Railing,	Foot	86
Geocomposite Wall Drain	Sq. Yd.	25
Pipe Underdrains for Structures, 4"	Foot	89
Furnishing Soldier Piles(w section)	Foot	652
Drilling and setting Soldier piles (in soil)	Cu. Ft.	4795
Untreated Timber Lagging	Sq. Ft.	408



CROSS SECTION
(Looking upstation)

DESIGNED - KRG
CHECKED - MJK
DRAWN - GSJ
CHECKED - MJK

GENERAL NOTES, CROSS SECTION & TOTAL BILL MATERIAL

SHEET NO. 2	F.A.P. RTE.	SECTION	COUNTY	TOTAL SHEETS	SHEET NO.
	600	60-(30,31,128)-1	Madison	399	274
8 SHEETS	RETAINING WALL 3		CONTRACT NO. 76830		
FED. ROAD DIST. NO. - ILLINOIS FED. AID PROJECT					

Rev. MID-AMERICA ENGINEERING SERVICES