

F.A.P. RTE.	SECTION	COUNTY	TOTAL SHEETS	SHEET NO.
809	67-1HBR	MONROE	144	1
FED. ROAD DIST. NO.	ILLINOIS	CONTRACT NO. 76977		

STATE OF ILLINOIS  
DEPARTMENT OF TRANSPORTATION  
DIVISION OF HIGHWAYS

**PROPOSED  
HIGHWAY PLANS**

FAP ROUTE 809 (IL 158)

SECTION 67-1HBR

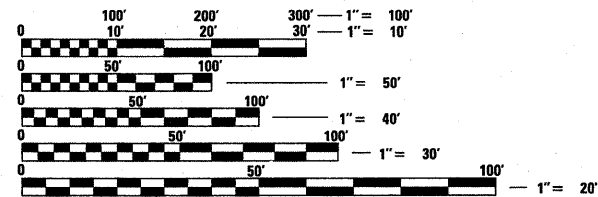
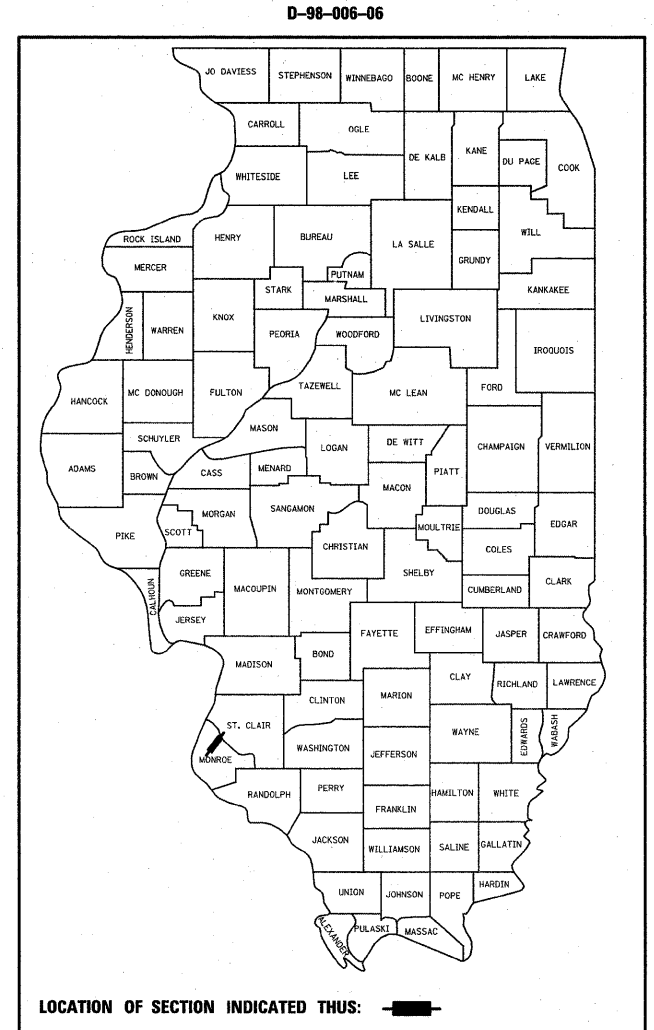
PROJECT: ACF-0809(005)

STRUCTURE REPLACEMENT

MONROE COUNTY

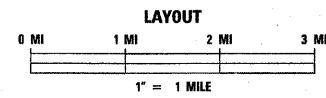
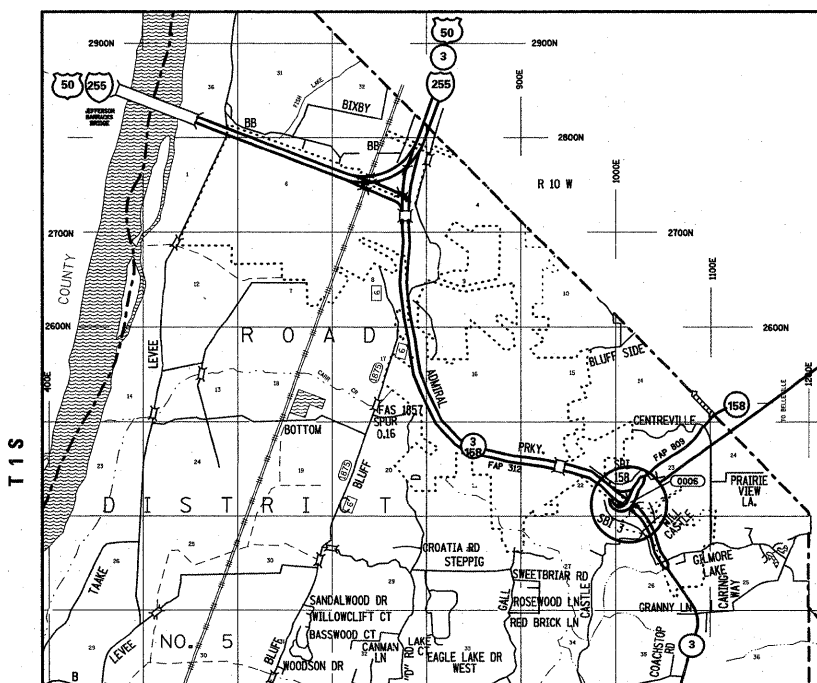
C-98-003-06

FOR INDEX OF SHEETS, SEE SHEET NO. 2



FULL SIZE PLANS HAVE BEEN PREPARED USING STANDARD ENGINEERING SCALES. REDUCED SIZED PLANS WILL NOT CONFORM TO STANDARD SCALES. IN MAKING MEASUREMENTS ON REDUCED PLANS, THE ABOVE SCALES MAY BE USED.

J.U.L.I.E.  
JOINT UTILITY LOCATION INFORMATION FOR EXCAVATION  
1-800-892-0123  
OR 811



FOUR SPAN STEEL BEAM  
STRUCTURE TO BE REPLACED  
WITH TWO SPAN CURVED  
STEEL BEAM STRUCTURE  
OVER IL ROUTE 3  
SN 067-0006 (E)  
SN 067-0042 (P)  
STA. 110+99.40  
190' - 2 1/4" BK TO BK ABUTMENTS

STATE OF ILLINOIS  
DEPARTMENT OF TRANSPORTATION  
DIVISION OF HIGHWAYS

SUBMITTED Dec 9 20 09  
Ma Chami  
DEPUTY DIRECTOR OF HIGHWAYS, REGION 5 ENGINEER

January 29 20 10  
Scott E. Still P.E. Jr.  
ENGINEER OF DESIGN AND ENVIRONMENT

January 29 20 10  
Christine M. Road/lee  
DIRECTOR OF HIGHWAYS, CHIEF ENGINEER

PROJECT ENGINEER: PATTI LeBEAU (618) 346-3179  
PROJECT MANAGER: ARTHUR MUEHLFELD (618) 346-3209  
CONTRACT NO. 76977

TRAFFIC DATA: IL 158	TRAFFIC DATA: IL 3
ADT = 9550 (2008)	ADT = 28850 (2008)
ADT = 14200 (2028)	ADT = 42850 (2028)
SU = 4.5%	SU = 3.6%
MU = 3.8%	MU = 4.3%

LATITUDE: 38.42938  
LONGITUDE: 90.17968

GROSS LENGTH = 0.04 MILES  
NET LENGTH = 0.04 MILES

NOTE: ROADWAY WORK NECESSARY  
FROM STA. 103+20 TO 142+00

**PRINTED BY THE AUTHORITY  
OF THE STATE OF ILLINOIS**