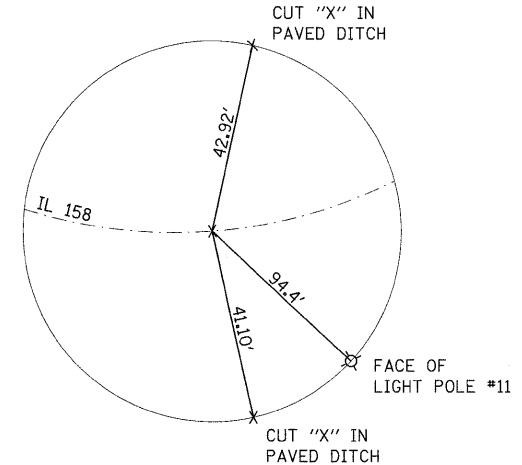
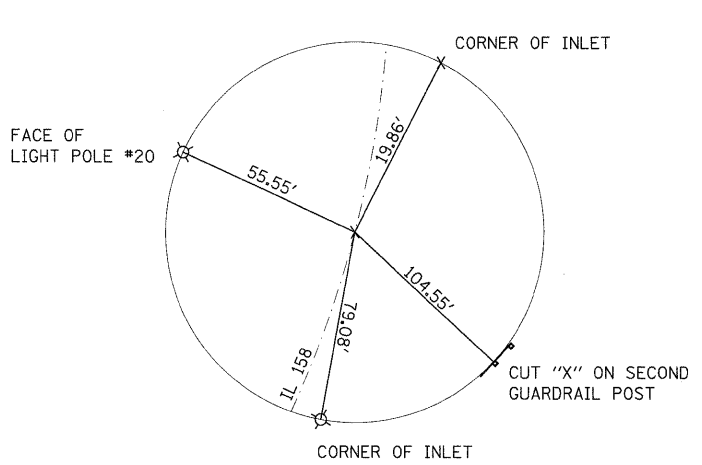


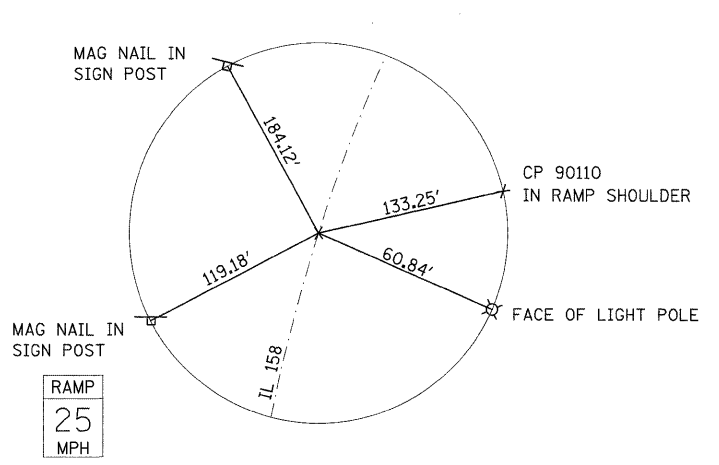
**TIE POINT**  
CUT "X"  
PT STATION 106+27.91



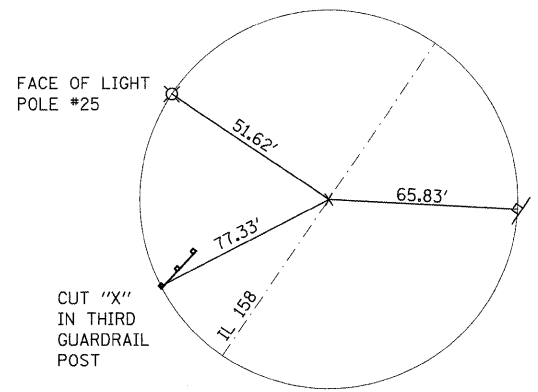
**TIE POINT**  
CUT "X"  
PC STATION 106+40.46



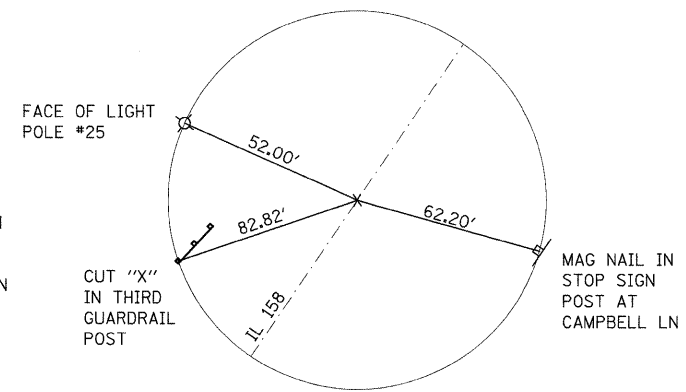
**TIE POINT**  
CUT "X"  
PT STATION 114+80.10



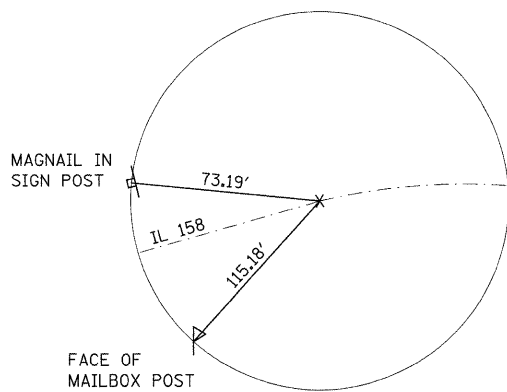
**TIE POINT**  
CUT "X"  
PT STATION 117+55.54



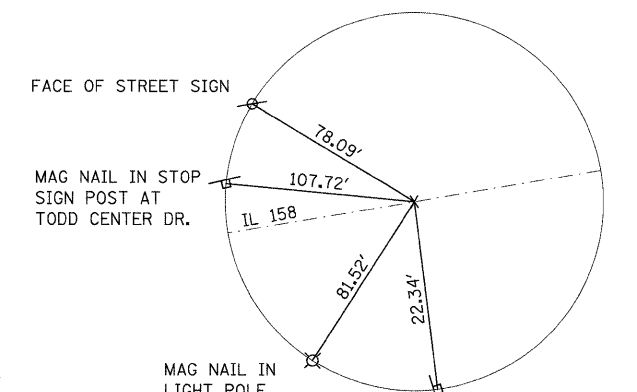
**TIE POINT**  
CUT "X"  
PT STATION 129+21.79



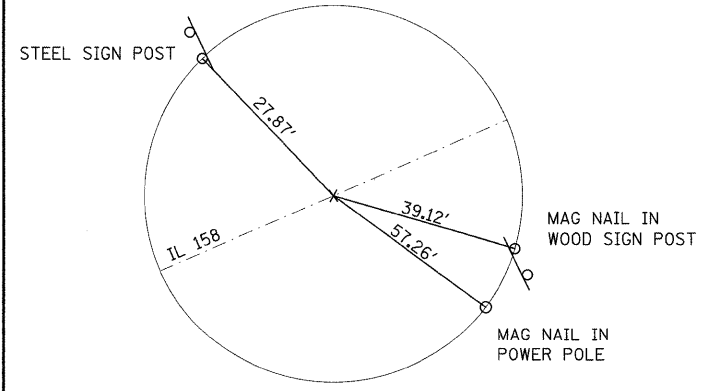
**TIE POINT**  
CUT "X"  
PC STATION 129+27.59



**TIE POINT**  
CUT "X"  
PCC STATION 132+91.03



**TIE POINT**  
CUT "X"  
PT STATION 138+50.58



**TIE POINT**  
CUT "X"  
PT STATION 141+66.85

**BENCHMARKS**

BM 410 - CHISELED SQUARE ON NORTH SIGN TRUSS FOUNDATION AT BEGINNING OF ON RAMP TO IL RTE 3 FROM IL RTE 158, LOCATED 3.0 MILES WEST OF INTERSECTION OF DOUGLAS RD AND IL RTE 158. STATION: 121+54 OFFSET: 60.4' LEFT ELEVATION: 613.70

BM 1 - CHISELED SQUARE ON LIGHT POLE FOUNDATION (POLE #20) ON WEST SIDE OF IL RTE 158, ±295' NORTH OF THE NORTH END OF SN 067-0006. STATION: 115+01 OFFSET 50.7' LEFT ELEVATION: 598.754

BM 2 - CHISELED SQUARE ON LIGHT POLE FOUNDATION (POLE #12) AT SE CORNER OF SN 067-0006 STATION: 109+68 OFFSET 28.8' RIGHT ELEVATION: 606.369

ALL TIES ARE DIRECT/SLOPE DISTANCES

FILE NAME =	USER NAME = owerbj	DESIGNED -	REVISED -	<b>STATE OF ILLINOIS DEPARTMENT OF TRANSPORTATION</b>	<b>TIE POINTS AND BENCHMARKS</b>				F.A.P. RTE.	SECTION	COUNTY	TOTAL SHEETS	SHEET NO.
c:\pwork\pwidot\owenbj\dms52558\p1n00506a.dgn		DRAWN -	REVISED -		809	67-IHBR	MONROE	144	15				
PLOT SCALE = 50.0000' / IN.		CHECKED -	REVISED -		CONTRACT NO. 76977								
PLOT DATE = 12/10/2009		DATE -	REVISED -		SCALE:	SHEET NO.	OF SHEETS	STA.	TO STA.	FED. ROAD DIST. NO.	ILLINOIS FED. AID PROJECT		