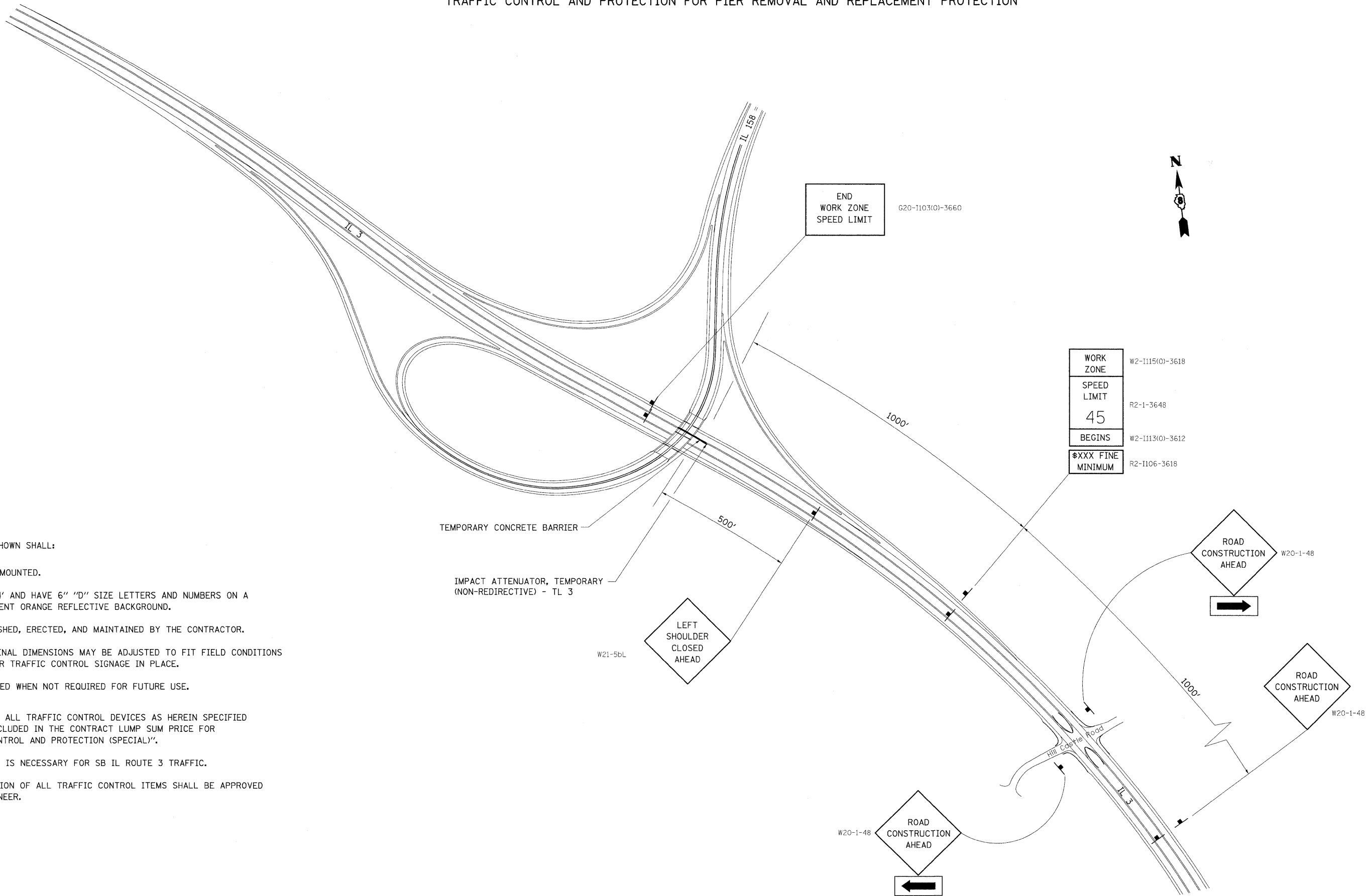


TRAFFIC CONTROL AND PROTECTION FOR PIER REMOVAL AND REPLACEMENT PROTECTION



NOTES

ALL SIGNS SHOWN SHALL:

1. BE POST MOUNTED.
2. BE 4' X 4' AND HAVE 6" "D" SIZE LETTERS AND NUMBERS ON A FLUORESCENT ORANGE REFLECTIVE BACKGROUND.
3. BE FURNISHED, ERECTED, AND MAINTAINED BY THE CONTRACTOR.
4. LONGITUDINAL DIMENSIONS MAY BE ADJUSTED TO FIT FIELD CONDITIONS AND OTHER TRAFFIC CONTROL SIGNAGE IN PLACE.
5. BE REMOVED WHEN NOT REQUIRED FOR FUTURE USE.

THE COST OF ALL TRAFFIC CONTROL DEVICES AS HEREIN SPECIFIED SHALL BE INCLUDED IN THE CONTRACT LUMP SUM PRICE FOR "TRAFFIC CONTROL AND PROTECTION (SPECIAL)".

SAME LAYOUT IS NECESSARY FOR SB IL ROUTE 3 TRAFFIC.

EXACT LOCATION OF ALL TRAFFIC CONTROL ITEMS SHALL BE APPROVED BY THE ENGINEER.

PLAN	DATE
NO.	
BY	
SURVEYED	
ALIGNED	
CHECKED	
BY	
DATE	

PROFILE	DATE
NO.	
BY	
SURVEYED	
GRADES	
CHECKED	
BY	
DATE	

FILE NAME =	USER NAME = owerbj	DESIGNED -	REVISED -
c:\pw_work\PW100T\OWENBJ\dms52558\stg0086.dgn		DRAWN -	REVISED -
		CHECKED -	REVISED -
		DATE -	REVISED -

STATE OF ILLINOIS
DEPARTMENT OF TRANSPORTATION

TRAFFIC CONTROL PLAN

SCALE:	SHEET NO.	OF	SHEETS	STA.	TO STA.
--------	-----------	----	--------	------	---------

F.A.P. RTE.	SECTION	COUNTY	TOTAL SHEETS	SHEET NO.
809	67-1HBR	MONROE	144	35
CONTRACT NO. 76977				
FED. ROAD DIST. NO. ILLINOIS FED. AID PROJECT				