

STATE OF ILLINOIS
DEPARTMENT OF TRANSPORTATION

NORTH CURB LINE

| Location | Station | Offset | Theoretical Grade Elevations |
|--------------------|-----------|--------|------------------------------|
| End W. Appr. Pav't | 109+62.05 | -27.00 | 605.72 |
| A | 109+72.42 | -27.00 | 605.81 |
| B | 109+82.79 | -27.00 | 605.89 |
| Bk. W. Abut. | 109+94.66 | -27.00 | 605.96 |

NORTH EDGE OF PAVEMENT

| Location | Station | Offset | Theoretical Grade Elevations |
|--------------------|-----------|--------|------------------------------|
| End W. Appr. Pav't | 109+65.28 | -19.00 | 606.39 |
| A | 109+75.51 | -19.00 | 606.47 |
| B | 109+85.80 | -19.00 | 606.55 |
| Bk. W. Abut. | 109+97.49 | -19.00 | 606.62 |

MEDIAN CURB LINE NORTH

| Location | Station | Offset | Theoretical Grade Elevations |
|--------------------|-----------|--------|------------------------------|
| End W. Appr. Pav't | 109+71.53 | -3.00 | 607.72 |
| A | 109+81.57 | -3.00 | 607.80 |
| B | 109+91.61 | -3.00 | 607.86 |
| Bk. W. Abut. | 110+02.97 | -3.00 | 607.93 |

CL IL 158 & L.C.J.

| Location | Station | Offset | Theoretical Grade Elevations |
|--------------------|-----------|--------|------------------------------|
| End W. Appr. Pav't | 109+72.67 | 0.00 | 607.73 |
| A | 109+82.67 | 0.00 | 607.80 |
| B | 109+92.67 | 0.00 | 607.87 |
| Bk. W. Abut. | 110+03.97 | 0.00 | 607.93 |

SOUTH CURB LINE

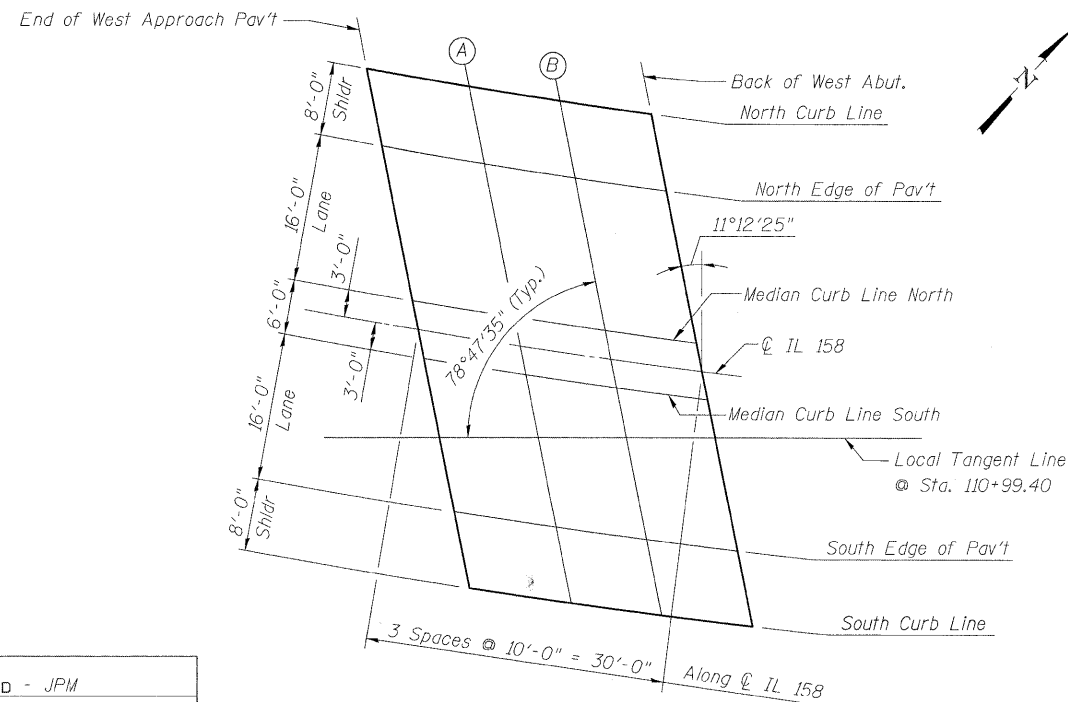
| Location | Station | Offset | Theoretical Grade Elevations |
|--------------------|-----------|--------|------------------------------|
| End W. Appr. Pav't | 109+82.51 | 27.00 | 609.72 |
| A | 109+92.16 | 27.00 | 609.79 |
| B | 110+01.82 | 27.00 | 609.84 |
| Bk. W. Abut. | 110+12.61 | 27.00 | 609.89 |

SOUTH EDGE OF PAVEMENT

| Location | Station | Offset | Theoretical Grade Elevations |
|--------------------|-----------|--------|------------------------------|
| End W. Appr. Pav't | 109+79.67 | 19.00 | 609.06 |
| A | 109+89.42 | 19.00 | 609.13 |
| B | 109+99.18 | 19.00 | 609.19 |
| Bk. W. Abut. | 110+10.12 | 19.00 | 609.24 |

MEDIAN CURB LINE SOUTH

| Location | Station | Offset | Theoretical Grade Elevations |
|--------------------|-----------|--------|------------------------------|
| End W. Appr. Pav't | 109+73.80 | 3.00 | 607.74 |
| A | 109+83.76 | 3.00 | 607.81 |
| B | 109+93.72 | 3.00 | 607.88 |
| Bk. W. Abut. | 110+04.96 | 3.00 | 607.94 |



PLAN

| |
|--------------------|
| DESIGNED - JPM |
| CHECKED - CCS |
| DRAWN - GAP |
| CHECKED - JPM, CCS |



9-28-09

TOP OF WEST APPROACH SLAB ELEVATIONS
STRUCTURE NO. 067-0042

| SHEET NO. 31 | F.A.P. RTE. | SECTION | COUNTY | TOTAL SHEETS | SHEET NO. |
|---|-------------|---------|--------|--------------|-----------|
| 34 SHEETS | 809 | 67-1HBR | Monroe | 144 | 95 |
| CONTRACT NO. 76977 | | | | | |
| FED. ROAD DIST. NO. 7 ILLINOIS FED. AID PROJECT | | | | | |