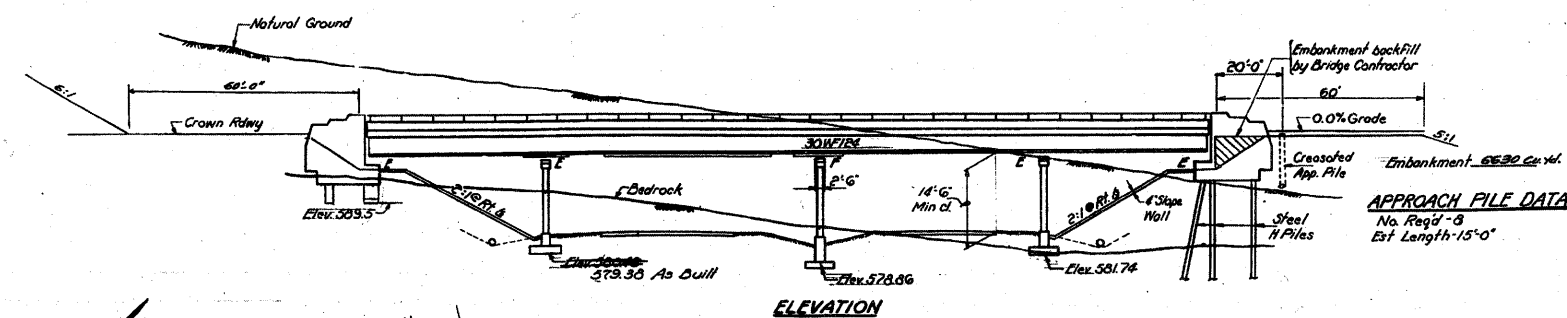


BM 60d nail washer in twin 13" walnut tree 60' right tangent Sta. 275+75 Elev. 603.89 No Existing Structure

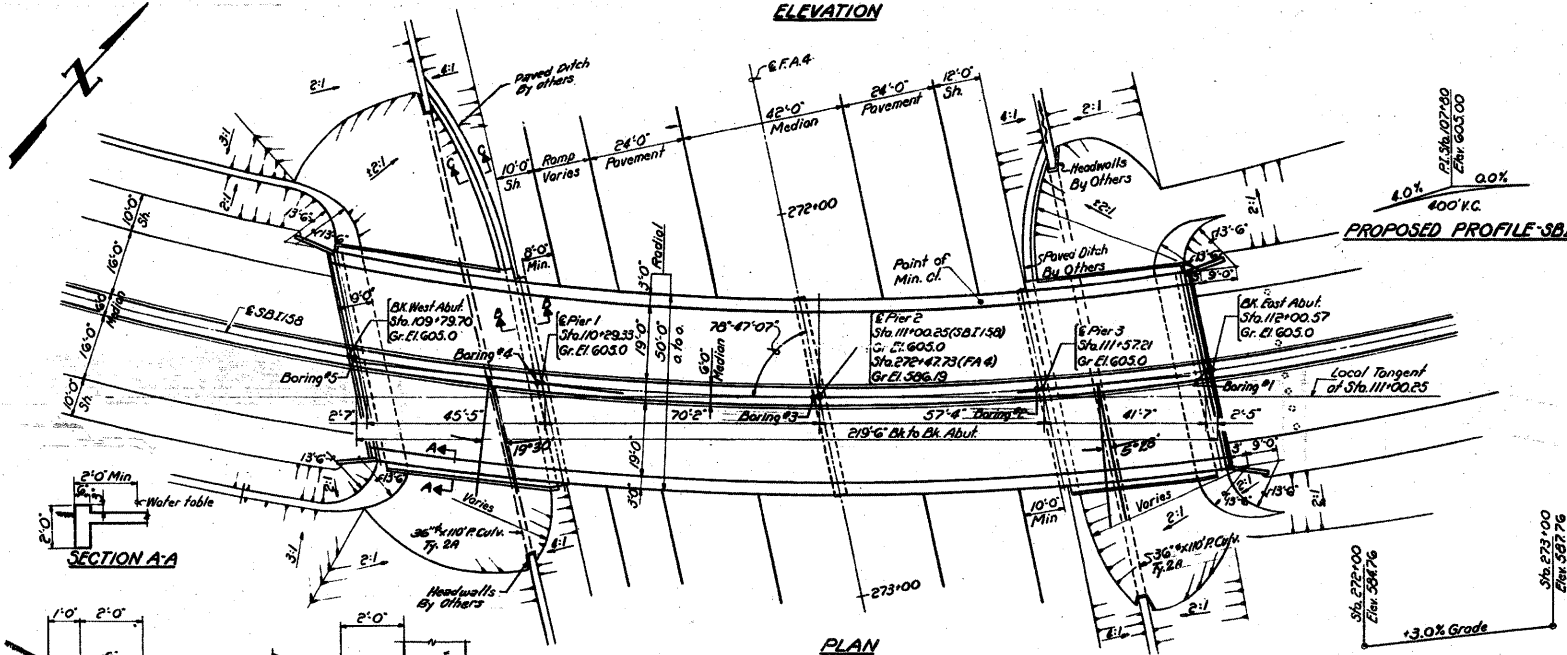
STATE OF ILLINOIS
DEPARTMENT OF PUBLIC WORKS & BUILDINGS
DIVISION OF HIGHWAYS

FA 4	67-1HB	MONROE	36	10	13 SHEETS
F-47(17)					

GENERAL NOTES
Coarse aggregate to be used in parapet handrails and end posts must be absolutely free of chert, flint, limonite, lignite and soft sandstone.
The concrete floor slab shall be finished in accordance with Article 51.19 of the Standard Specifications.
Slope wall shall be reinforced with welded wire fabric 6"x6" mesh, weighing 50# per 100 sq. ft.
All reinforcement bars shall be lapped 20 diameters unless otherwise shown.
All rivets 4 U.S. Bolts 3/4" Open Holes 1/2" unless otherwise noted. Anchor bolts shall be set before setting diaphragms over supports.
Diaphragms shall be rigidly connected before placement of slab.
The exposed surfaces of the expansion guard shall be given two shop coats of red lead paint, the contact surfaces shall be given one coat of red lead paint. Anchor studs shall not be painted.
Expansion guards are included in the quantity of Structural Steel, Est. Wt. 2260 lbs.
Except as otherwise provided, all structural steel shall receive one shop coat of red lead paint and two field coats of aluminum paint. See Article 56.10 to 56.5 inclusive of the Standard Specifications.
The contractor shall drive one steel test pile in a permanent location of East abutment as directed by the Engineer before ordering the remainder of piles.
Steel H piles shall be driven to refusal.
Permanent forms will not be permitted in forming the concrete floor.

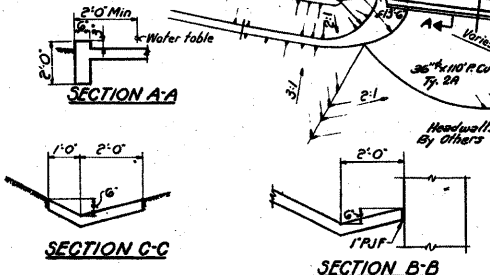


APPROACH FILE DATA
No. Reg'd - 0
Est. Length - 15'-0"



TOTAL BILL OF MATERIAL

Item	Units	Super	Substn	Total
* Rack Exc. for Structures	Cu. Yd.	135	—	135
* Class A Exc. for Structures	Cu. Yd.	130	—	130
Class X Concrete	Cu. Yds.	352.6	267.4	620.0
Structural Steel	Lbs.	302,200	281.0	302,800
Aluminum Handrail	Lin. Ft.	435	—	435
Reinforcement Bars	Lbs.	75,400	36,150	111,550
Crossed Piles	Lin. Ft.	—	120	120
Steel Piles (S.B.P.36)	Lin. Ft.	—	160	160
Test Pile (Steel)	Each	—	1	1
Name Plates	Each	1	—	1
Pipe Culvert. 14-36" P.	Lin. Ft.	—	220	220
Slope Wall	Sq. Yds.	—	602	602
Protective Coat	Sq. Yds.	1380	—	1380
Bridge Seat Sealant	Lump Sum	—	—	—



HORIZONTAL CURVE DATA - S.B.I. 158

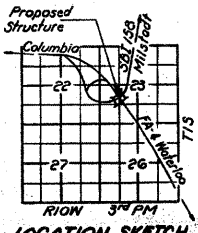
Δ = 67°
D = 7° 30'
T = 505.64
L = 893.33
P = 763.944
E = 132.18
PC = Sta. 105+196.80
PT = Sta. 114+60.12
SE = 0.087% Super-elevation Attained
Sta. 116+08.12 to Sta. 114+16.12

DESIGN STRESSES
P = 1400 psi Superf. Sub.
R = 20,000 psi Reinf.
R = 20,000 psi Struct. (A-36)
W = 25 psi Figs.
n = 10
Allowable Deflection = 1/400
LOADING HSEO - 44

PROPOSED PROFILE FA4

STATION 111+00.25
BUILT 196 BY
STATE OF ILLINOIS
S.B.I. RT. 158 SEC. 67-1HB
F.A. PROJ. F-47(17)
LOADING HSEO

NAME PLATE
See STA. 111+11.1



LOCATION SKETCH
PROJ. F-47(17)
GENERAL PLAN & ELEVATION
S.B.I. 158 OVER
FA4 RELOCATED (ILL. RT. 3)
SEC. 67-1HB
MONROE COUNTY
STA. 111+00.25

DESIGNED: J. W. Waring
CHECKED: B.C.
DRAWN: W.E. Dickerson
APPROVED: U.E. [Signature]
DATE: JULY 6 1966

Rev. 4-28-65 S.F.M. Changed gyp. / fies as shown in 11/11/66
Rev. 1-14-66 Added As Built Elevation for Pier 1, J.I.P.

FOR INFORMATION ONLY

FILE NAME =	USER NAME = owenb_j	DESIGNED -	REVISED -	STATE OF ILLINOIS DEPARTMENT OF TRANSPORTATION	EXISTING STRUCTURE PLAN	F.A.P. RTE.	SECTION	COUNTY	TOTAL SHEETS	SHEET NO.	
os:\pw\work\p\idos\owenb_j\dms52558\p\in20286a.dgn	EXAMINED: J.G. Baumann	DRAWN -	REVISED -			809	67-1HB	MONROE	44	99	
PLOT SCALE = 5/8" = 1' IN.	PASSED: [Signature]	CHECKED -	REVISED -			CONTRACT NO. 76977					
PLOT DATE = 11/5/2009	APPROVED: U.E. [Signature]	DATE -	REVISED -			SCALE:	SHEET NO. OF SHEETS	STA. TO STA.	FED. ROAD DIST. NO.	ILLINOIS FED. AID PROJECT	