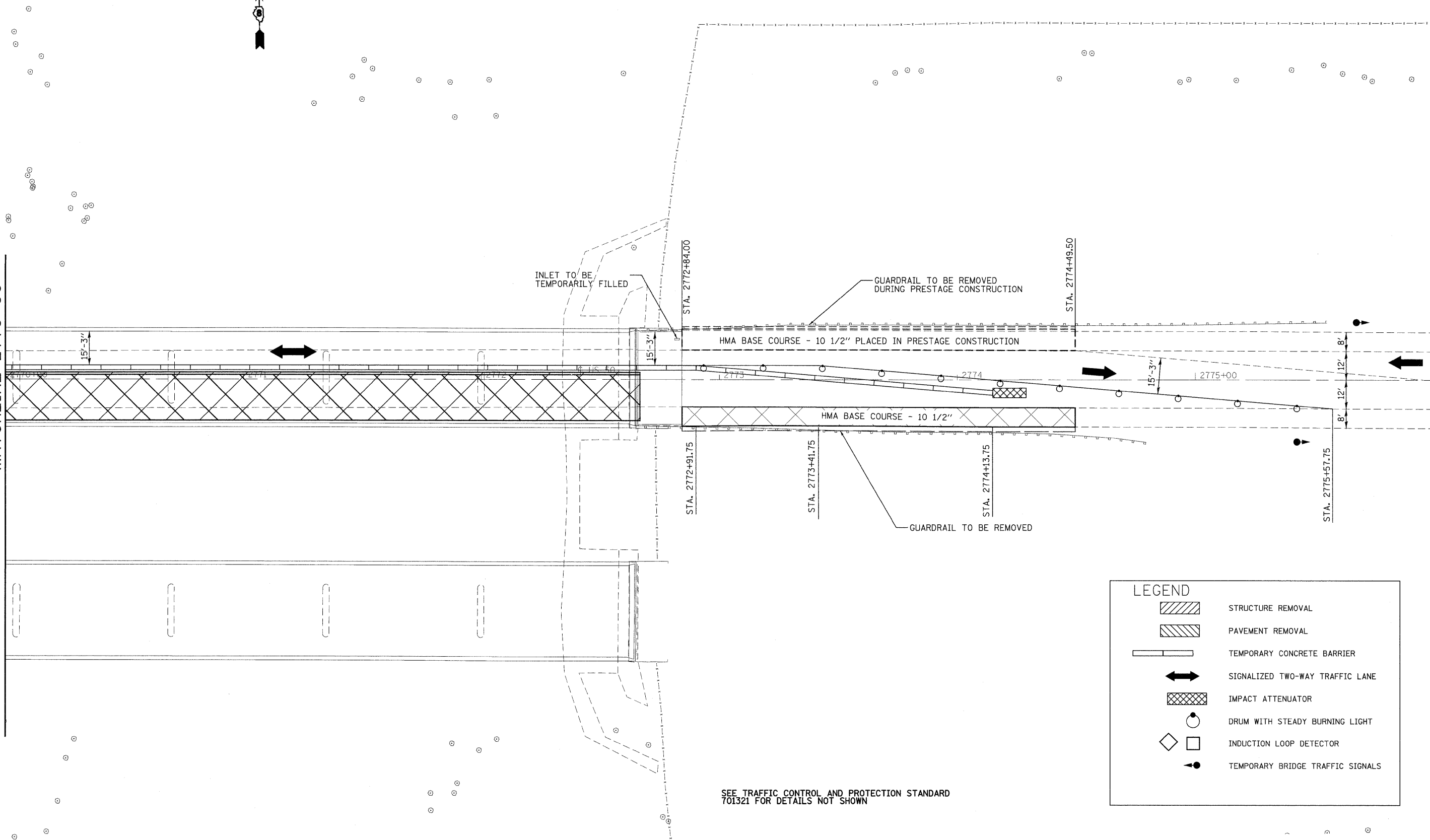




MATCHLINE 2770+00

MATCHLINE 2776+00



SEE TRAFFIC CONTROL AND PROTECTION STANDARD 701321 FOR DETAILS NOT SHOWN

LEGEND	
	STRUCTURE REMOVAL
	PAVEMENT REMOVAL
	TEMPORARY CONCRETE BARRIER
	SIGNALIZED TWO-WAY TRAFFIC LANE
	IMPACT ATTENUATOR
	DRUM WITH STEADY BURNING LIGHT
	INDUCTION LOOP DETECTOR
	TEMPORARY BRIDGE TRAFFIC SIGNALS

FILE NAME =	USER NAME = manntm	DESIGNED -	REVISED -
cc:\pwork\VPWIDOT\MANNTM\dms52470\p1n18207b.dgn		DRAWN -	REVISED -
	PLOT SCALE = 20.0000' / IN.	CHECKED -	REVISED -
	PLOT DATE = 12/8/2009	DATE -	REVISED -

**STATE OF ILLINOIS
DEPARTMENT OF TRANSPORTATION**

STAGE I CONSTRUCTION - LOCATION 2

SCALE: 1" = 20' SHEET NO. 4 OF 7 SHEETS STA. 2770+00 TO STA. 2776+00

F.A.P. RTE.	SECTION	COUNTY	TOTAL SHEETS	SHEET NO.
327	14-12BR-1	CLINTON	72	41
FED. ROAD DIST. NO. 8 ILLINOIS FED. AID PROJECT			CONTRACT NO. 76B27	