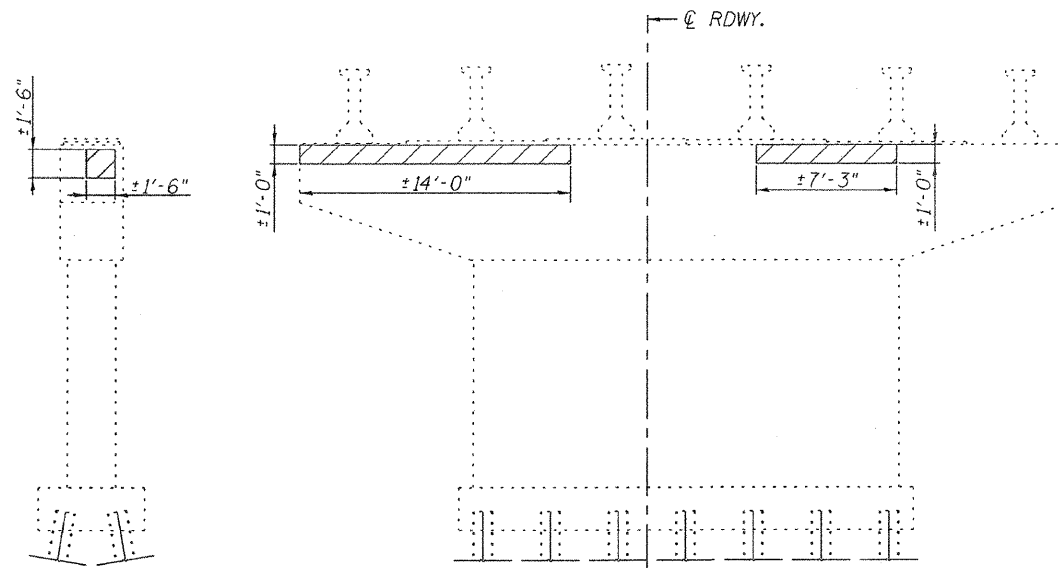


**END VIEW PIER 3**  
(Looking North)

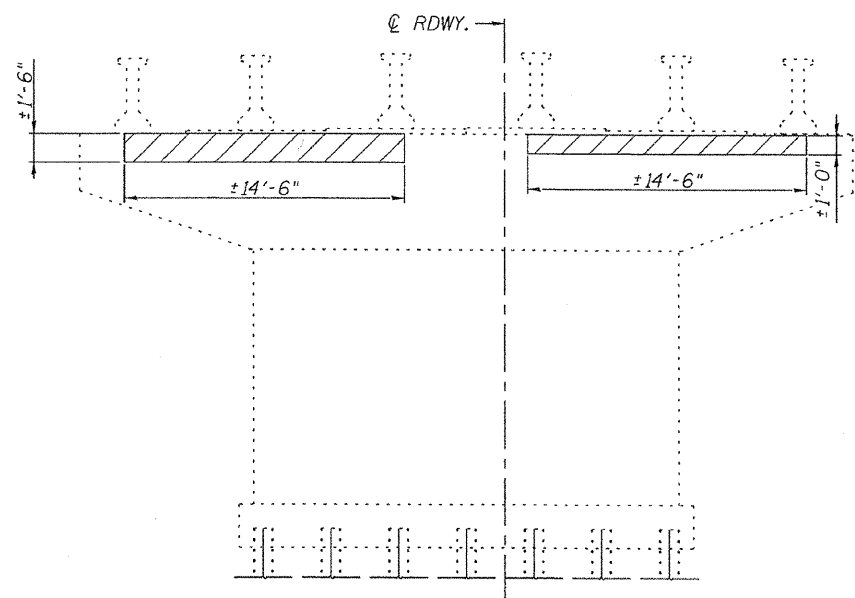
**ELEVATION PIER 3**  
(Looking East)



**END VIEW PIER 6**  
(Looking North)

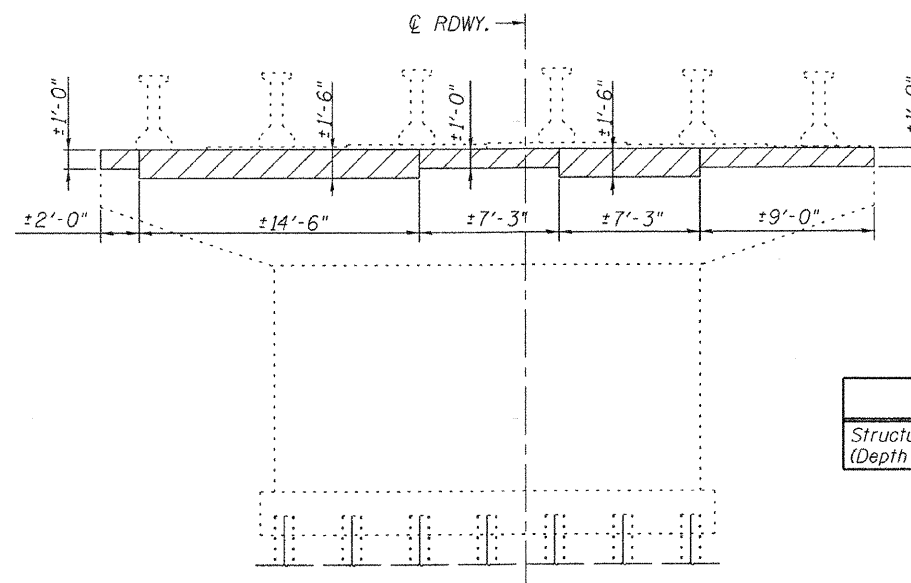
**ELEVATION PIER 6**  
(Looking East)

Notes: Hatched area indicates approximate area of Structural Repair of Concrete.  
Exact repairs are to be determined by the Engineer.  
Pier seats at Piers 3 & 6 shall be cleaned & sealed.  
Work will be paid for as Cleaning Bridge Seats.



**END VIEW PIER 3**  
(Looking South)

**ELEVATION PIER 3**  
(Looking West)



**END VIEW PIER 6**  
(Looking South)

**ELEVATION PIER 6**  
(Looking West)

**BILL OF MATERIAL**

Item	Unit	Total
Structural Repair of Concrete (Depth equal to or less than 5")	Sq. Ft.	120.2

**PIER CONCRETE REPAIR DETAILS**  
S.N. 014-0049



**Allen Henderson & Associates, Inc.**  
Civil and Structural Engineers Springfield, IL.  
62703 Phone: (217)544-8033 IL Design Firm  
No. 184-001907

SHEET NO. 12  
17 SHEETS

F.A.P. RTE.	SECTION	COUNTY	TOTAL SHEETS	SHEET NO.
327	14-12BR-1	CLINTON	72	56
<b>CONTRACT NO. 76B27</b>				
FED. ROAD DIST. NO. _ ILLINOIS FED. AID PROJECT				