

STATE OF ILLINOIS  
DEPARTMENT OF TRANSPORTATION

PROJECT NO.	SECTION	SHEET NO.	TOTAL SHEETS
309/1428	CLINTON	41	17

Note:  
Space reinforcement in cap to miss anchor bolts.  
Minimum bar laps = 24 dia unless otherwise noted.  
All edges shall have standard 1/4 chamfers except as noted.  
Pier steps monolithically with cap.

PILE DATA

Type Steel: A12x5.3  
Capacity: Drive to Refusal  
No. Req'd: 164 + 4 Test Piles

Pier #	W. Bound	E. Bound	WBL	EBL
1	61'-0"	51'-0"	1	1
2	59'-0"	58'-0"	1	1
3	58'-0"	55'-0"	1	1
6	51'-0"	63'-0"	1	1
7	51'-0"	63'-0"	1	1
8	66'-0"	64'-0"	1	1

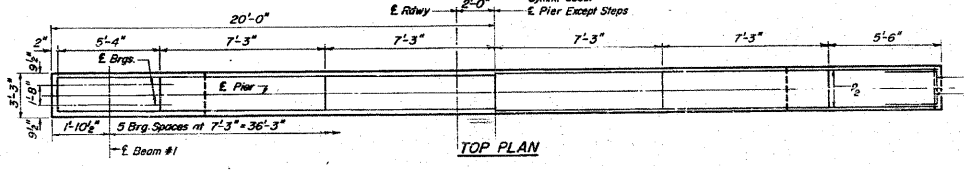
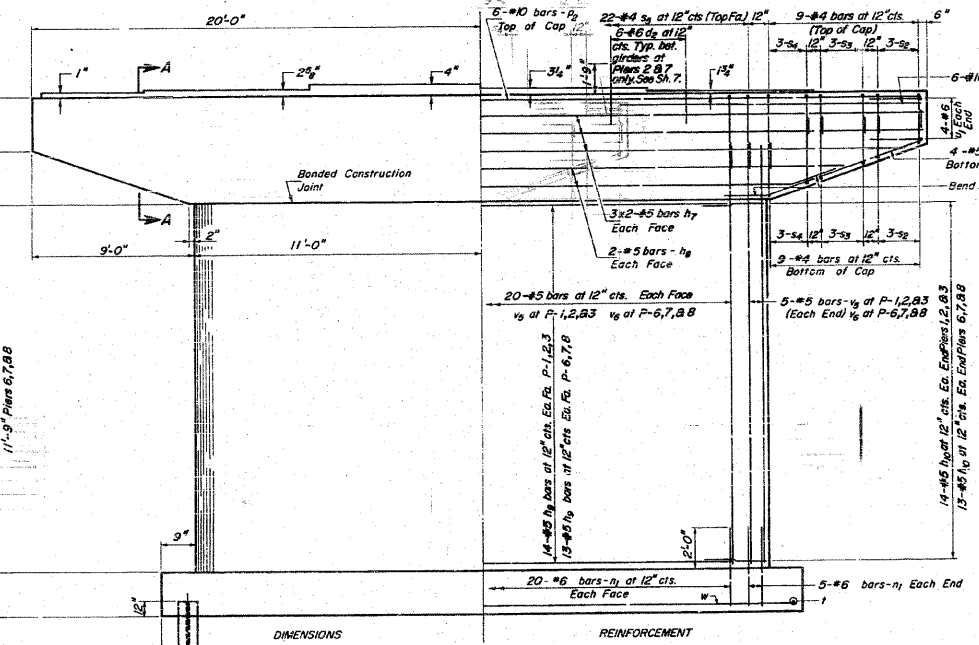
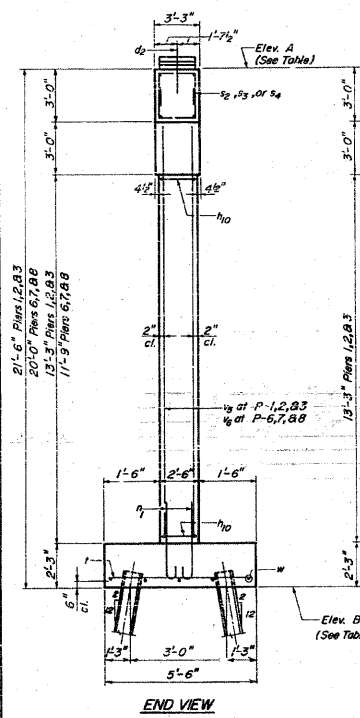
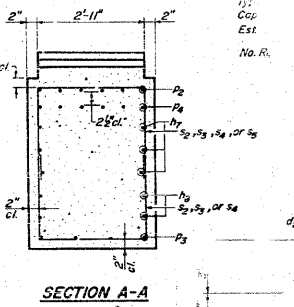


TABLE OF PIER ELEVATIONS

Pier #	A	B
1	455.01	433.51
2	454.85	433.35
3	454.31	432.81
6	453.30	433.30
7	453.29	433.29
8	452.82	432.82



REINFORCEMENT

Bar	No.	Size	Length	Shape
da	120	#6	3'-6"	—
hb	144	#5	20'-5"	—
hg	48	#5	34'-0"	—
hh	324	#5	18'-5"	—
hi	324	#5	6'-2"	—
h1	600	#6	4'-5"	—
h2	72	#10	33'-0"	—
h3	96	#5	10'-6"	—
h4	144	#10	14'-0"	—
h5	144	#4	7'-5"	—
h6	144	#4	9'-5"	—
h7	144	#4	9'-9"	—
h8	264	#4	11'-11"	—
i	336	#5	5'-3"	—
u1	96	#6	9'-10"	—
v6	300	#5	15'-0"	—
v8	300	#5	14'-4"	—
w	60	#5	23'-3"	—

TWELVE PIERS BILL OF MATERIAL

Bar	No.	Size	Length	Shape
da	120	#6	3'-6"	—
hb	144	#5	20'-5"	—
hg	48	#5	34'-0"	—
hh	324	#5	18'-5"	—
hi	324	#5	6'-2"	—
h1	600	#6	4'-5"	—
h2	72	#10	33'-0"	—
h3	96	#5	10'-6"	—
h4	144	#10	14'-0"	—
h5	144	#4	7'-5"	—
h6	144	#4	9'-5"	—
h7	144	#4	9'-9"	—
h8	264	#4	11'-11"	—
i	336	#5	5'-3"	—
u1	96	#6	9'-10"	—
v6	300	#5	15'-0"	—
v8	300	#5	14'-4"	—
w	60	#5	23'-3"	—

PIERS # 1,2,3,6,7,8,8  
F.A.R.T. 409 SEC. 14-28  
CLINTON COUNTY  
STA. 2769+72

DESIGNED: JAC-1/10/20  
CHECKED: GPM/MLK  
DRAWN: G. Ritchie  
CHECKED: GPM

EXAMINED: [Signature]  
DESIGNED: [Signature]  
DRAWN: [Signature]  
CHECKED: [Signature]

P-10, 1/20 5-20-88

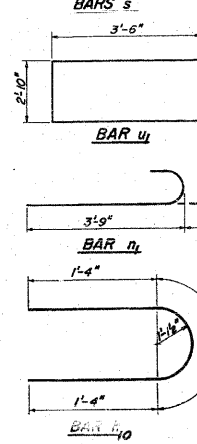
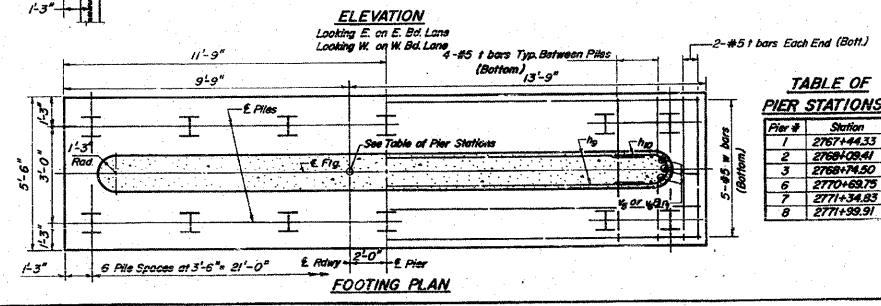


TABLE OF PIER STATIONS

Pier #	Station
1	2767+44.33
2	2768+08.41
3	2768+74.50
6	2770+63.75
7	2771+34.85
8	2771+93.91