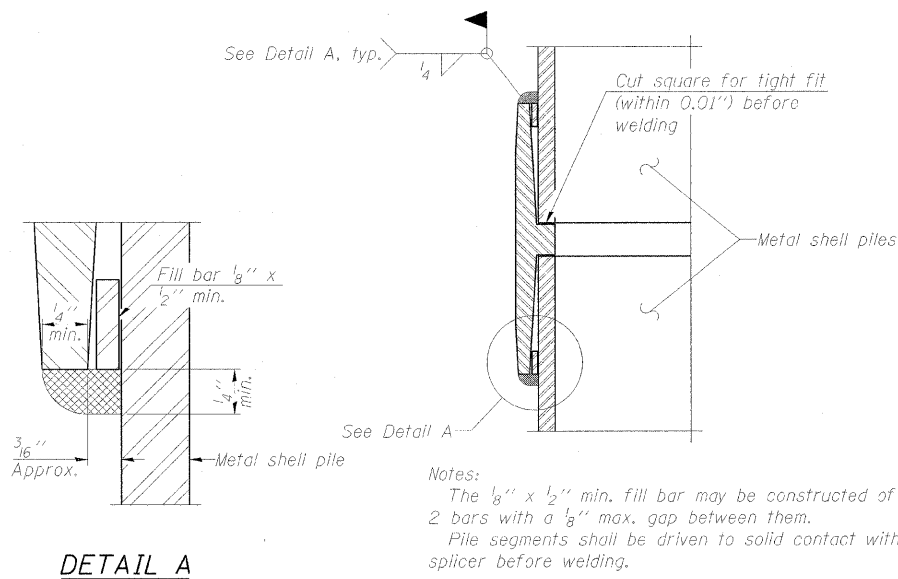


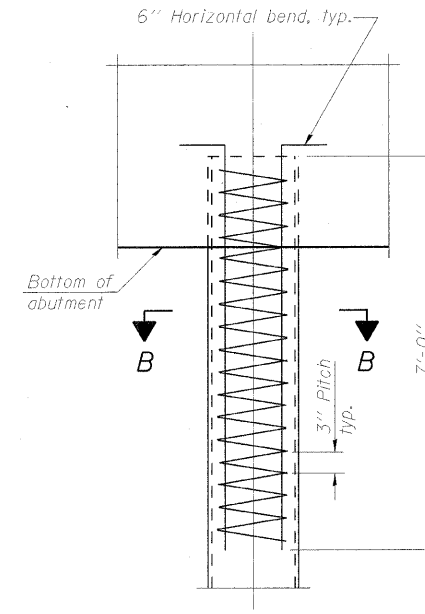
METAL SHELL PILE TABLE

Designation and outside diameter	Wall thickness t	Weight per foot (Lbs./ft.)	Inside volume (yd. ³ /ft.)
PP12	0.179"	22.60	0.0274
PP12	0.250"	31.37	0.0267
PP14	0.250"	36.71	0.0368
PP14	0.312"	45.61	0.0361

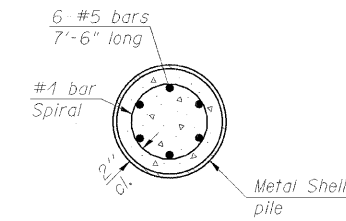


DETAIL A

WELDED COMMERCIAL SPLICE

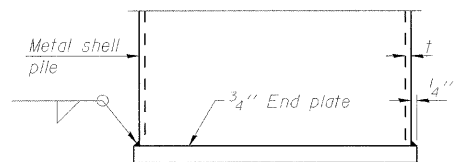


ELEVATION

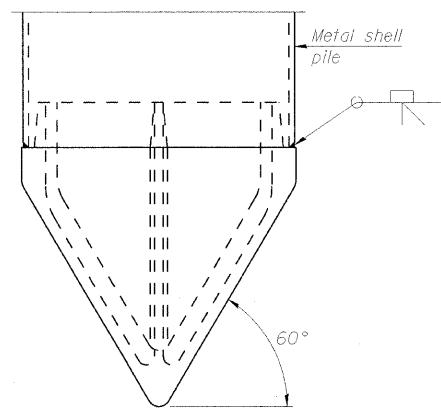


SECTION B-B

METAL SHELL REINFORCEMENT

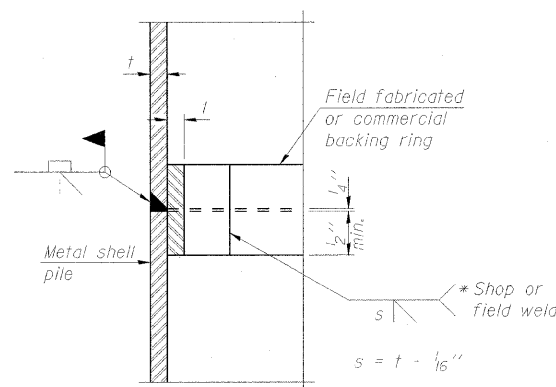


END PLATE ATTACHMENT



METAL SHELL PILE SHOE ATTACHMENT
(See Note A)

Note A:
 When called for on the plans, the Contractor shall furnish metal shell pile shoes consisting of a single piece conical pile point as shown. The pile shoes shall be cast in one piece steel according to either ASTM A 148 Grade 90-60 or AASHTO M 103 Grade 65-35 and shall provide full bearing over the full circumference of the metal shell pile. The pile shoe shall have tapered leads to assure proper alignment and fitting and shall be secured to the pile with a circumferential weld.



COMPLETE PENETRATION WELD SPLICE

* Field fabricated backing ring may be made from pile shell by removing segment to allow reducing circumference and vertically rejoin with partial joint penetration weld.

Note:
 The metal shell piles shall be according to ASTM A 252 Grade 3.

FILE NAME =	USER NAME = #USER#	DESIGNED - JXH	REVISED -	STATE OF ILLINOIS DEPARTMENT OF TRANSPORTATION	METAL SHELL PILE DETAILS EXCHANGE AVENUE OVER I-55 /70 (S.N. 082-0378)	F.A.I. RTE. 70	SECTION 82-1-1HB	COUNTY ST. CLAIR	TOTAL SHEETS 236	SHEET NO. 190
#FILES#	PLOT SCALE = #SCALE#	DRAWN - JHR	REVISED -			CONTRACT NO. 76C55				
	PLOT DATE = #DATE#	CHECKED - CHY	REVISED -			SCALE: SHEET NO. S-31 OF S-37 SHEETS STA. TO STA.	FED. ROAD DIST. NO. ILLINOIS FED. AID PROJECT			
		DATE - 10-09-09	REVISED -							