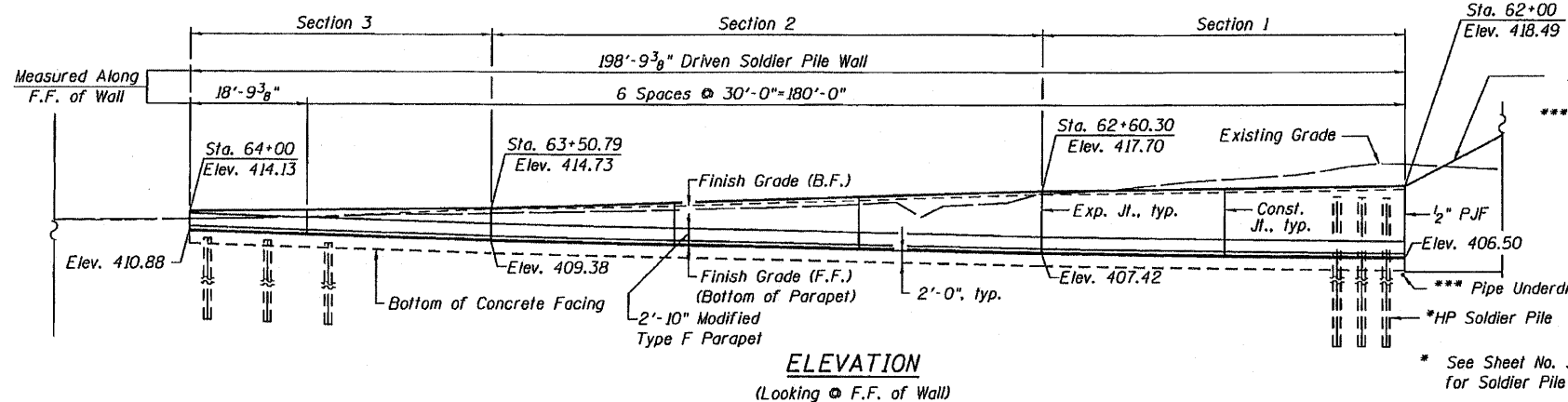


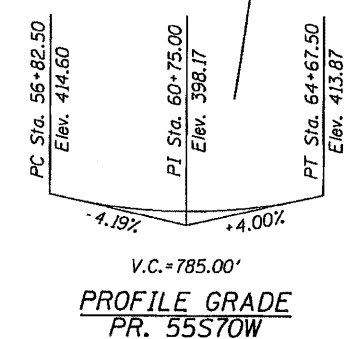
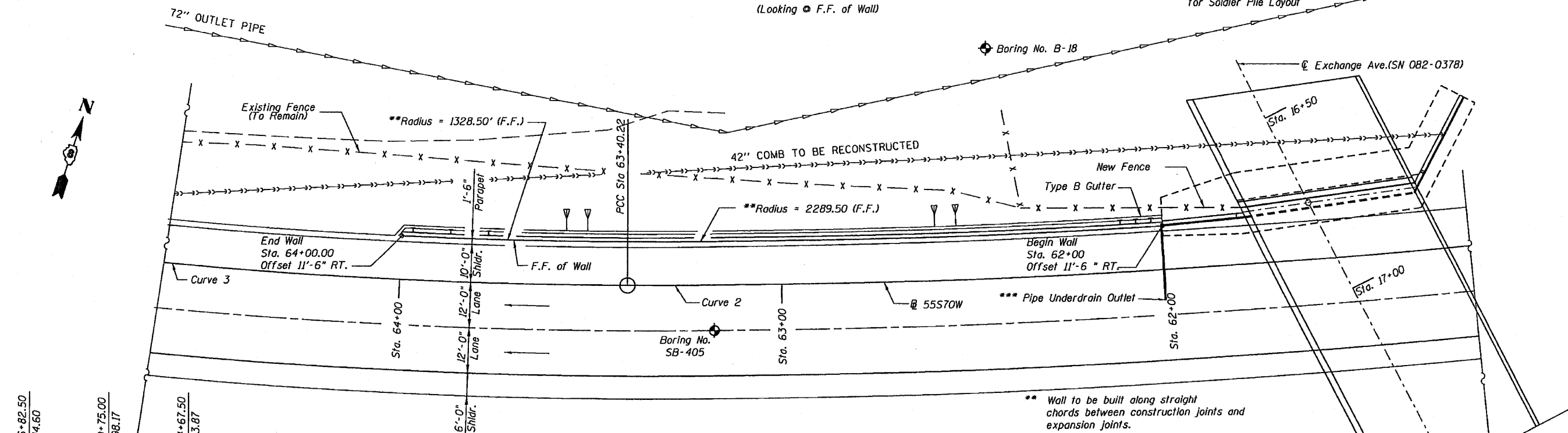
Bench Mark: Cut "X" on North cap bolt of fire hydrant, southerly quadrant of Exchange and 9th, 41' left, Sta. 5+41 (9th Street), Elev. 419.81.

Existing Structure: None



S.N. 082-0378 Wingwall
 *** 20' Length of 4" ϕ pipe connected to Pipe Underdrains for Structures with an Elbow. Pipe will daylight onto the temporary slope in front of the wall and be connected to a catch basin in the future. Rodent shield in accordance with Article 601.05 of the Standard Specifications and a 2' x 2' area of riprap in accordance with Section 281 of the Standard Specifications shall be installed. Included in cost of Pipe Underdrains for Structures.

* See Sheet No. 3 of 8 for Soldier Pile Layout



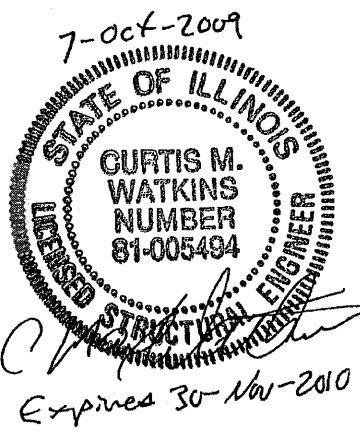
CURVE DATA		CURVE DATA	
Curve: 55S70W-2		Curve: 55S70W-3	
P.I. = Sta. 60+50.80	$\Delta = 14^{\circ}-29'-29"$ (RT)	P.I. = Sta. 67+79.76	$\Delta = 36^{\circ}-19'-13"$ (RT)
D = 2^{\circ}-29'-24"	R = 2301.00'	D = 4^{\circ}-16'-33"	R = 1340.00'
T = 292.55'	L = 581.97'	T = 439.54'	L = 849.44'
E = 18.52'	e = 4.0%	E = 70.25'	e = 5.3%
T.R. ATTAINMENT = 0'	S.E. RUN ATTAINMENT = 36'	T.R. ATTAINMENT = 0'	S.E. RUN ATTAINMENT = 47'
P.C. = Sta. 57+58.25	P.T. = Sta. 63+40.22	P.C. = Sta. 63+40.22	P.T. = Sta. 71+89.66

DESIGN SPECIFICATIONS
2002 AASHTO

DESIGN STRESSES
FIELD UNITS
 $f'c = 3,500$ psi
 $f_y = 60,000$ psi (Reinforcement)
 $f_y = 36,000$ psi (M270 Grade 36)

APPROVED
FOR STRUCTURAL ADEQUACY ONLY

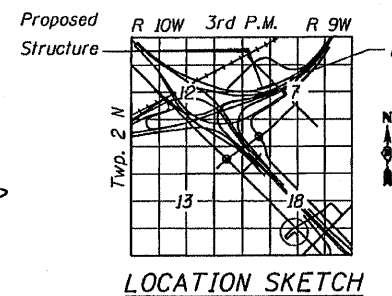
Ralph E. Anderson (TET)
ENGINEER OF BRIDGES AND STRUCTURES



** Wall to be built along straight chords between construction joints and expansion joints.

Note: Offsets are measured from the @ Ramp 55S70W to the Front Face of wall.

F.F.=Front Face
B.F.=Back Face



GENERAL PLAN & ELEVATION
RAMP 55S70W
F.A.I. RTE. 55 & 64 (I-55/I-64 TRI-LEVEL)
WITH F.A.P. RTE. 998 (I-70)
SECTION 82-1-IHB
ST. CLAIR COUNTY
STATION 62+00.00 TO 64+00.00
STRUCTURE NO. 082-W301

FILE NAME: #FILE#	USER NAME: #USER#	DESIGNED: CMW	REVISED:	STATE OF ILLINOIS DEPARTMENT OF TRANSPORTATION	GENERAL PLAN - RETAINING WALL 082-W301	F.A.P. RTE. 998	SECTION 82-1-IHB	COUNTY ST. CLAIR	TOTAL SHEETS 236	SHEET NO. 197
PLLOT SCALE: #SCALE#	CHECKED: JSA	REVISIED:	SCALE: N.T.S.			SHEET NO. 1 OF 9 SHEETS	STA. 62+00.00 TO STA. 64+00.00	FED. ROAD DIST. NO.	ILLINOIS FED. AID PROJECT	CONTRACT NO. 76C55
PLLOT DATE: #DATE#	DATE: OCT 9, 2009	REVISIED:								

