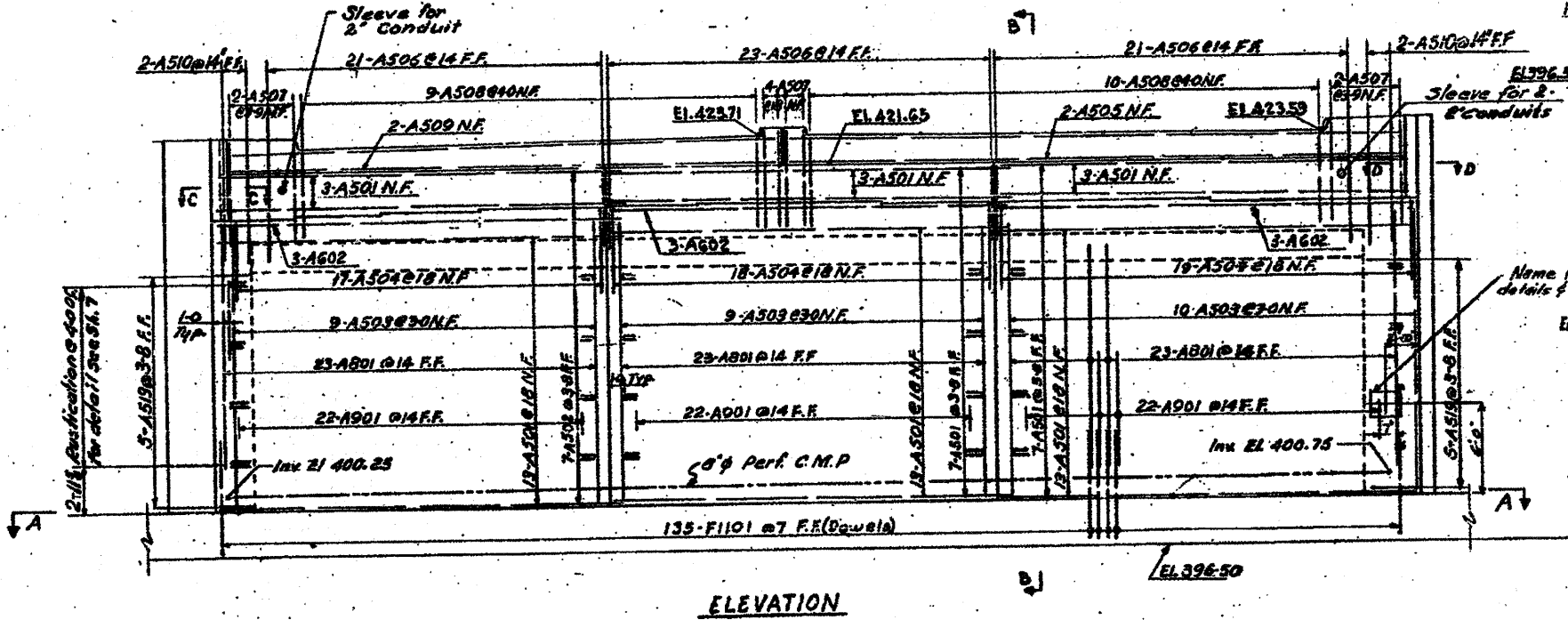
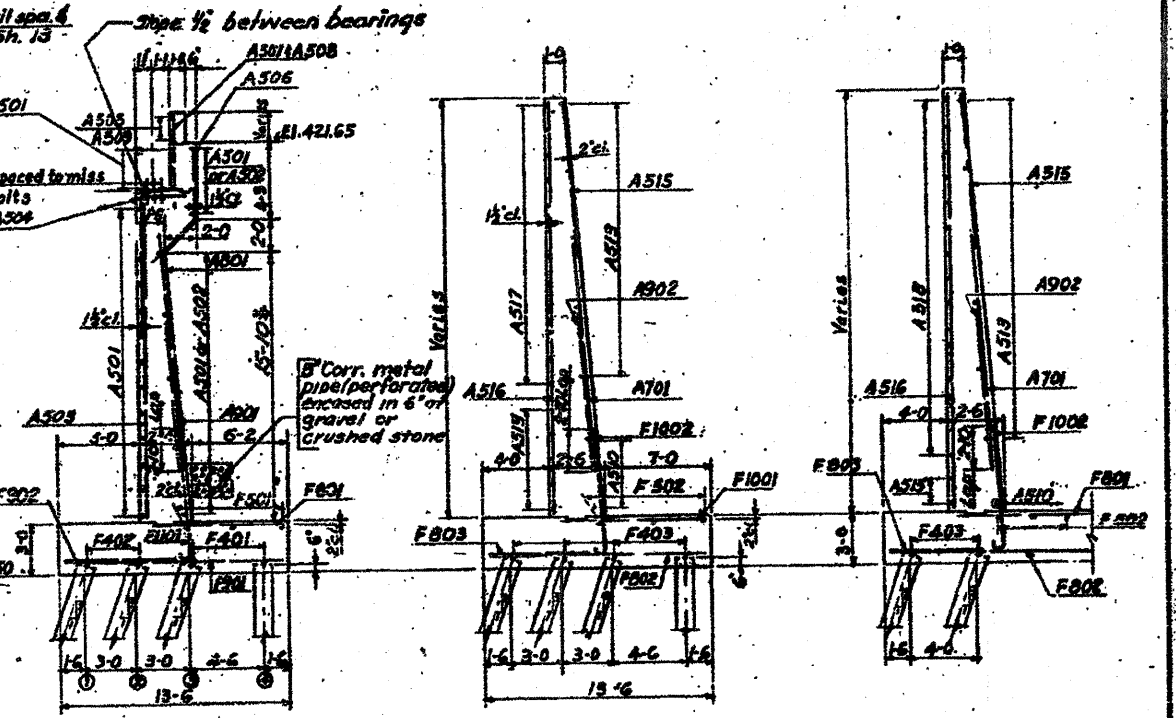


PLAN

NOTE:
6" of gravel or crushed stone encasement around 8" drain pipe shall be considered incidental to the cost of 5" perforated C.M.P.



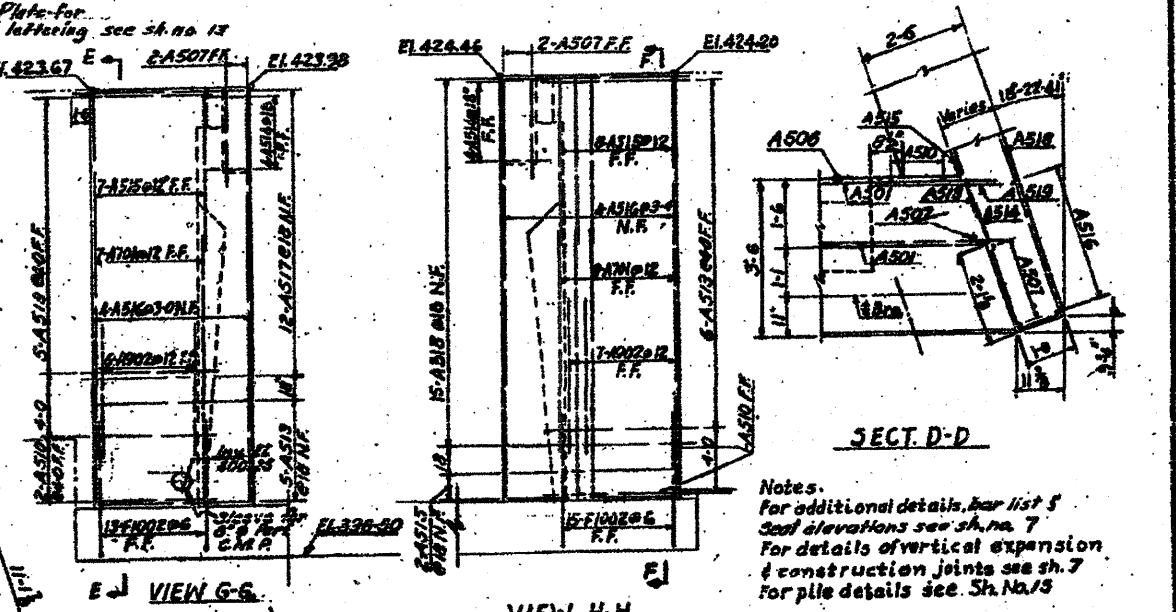
ELEVATION



SECT. B-B

SECT. E-E

SECT. F-F

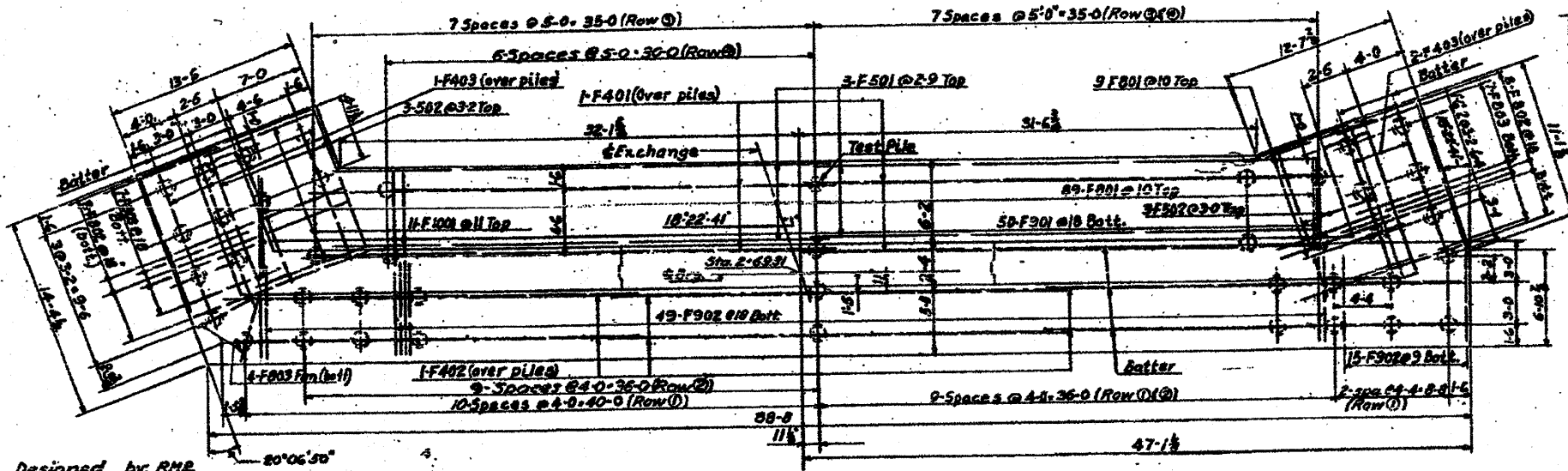


VIEW G-G

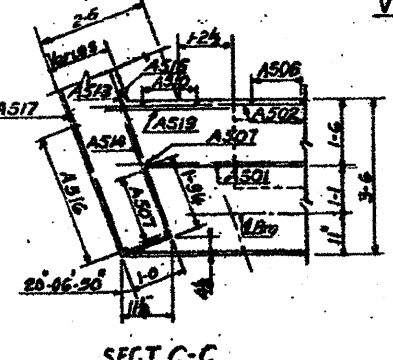
VIEW H-H

SECT. D-D

Notes:
For additional details, see list of steel elevations see sh. no. 7
For details of vertical expansion & construction joints see sh. 7
For pile details see Sh. No. 5



SECTION A-A



SECT. C-C

Designed by: RMR
Drawn by: ES
Checked by: RMR

STATE OF ILLINOIS
DEPARTMENT OF PUBLIC WORKS & BLDGS.
DIVISION OF HIGHWAYS
&
CITY OF EAST ST. LOUIS
EAST ST. LOUIS EXPRESSWAY
EXCHANGE AVE. OVER EXPRESSWAY
SOUTH ABUTMENT
H. W. LOCHNER, INC.
ENGINEERS
DATE JANUARY 1938 CHICAGO, ILLINOIS SHEET NO. 4

FOR INFORMATION ONLY

SHEET A-4
236