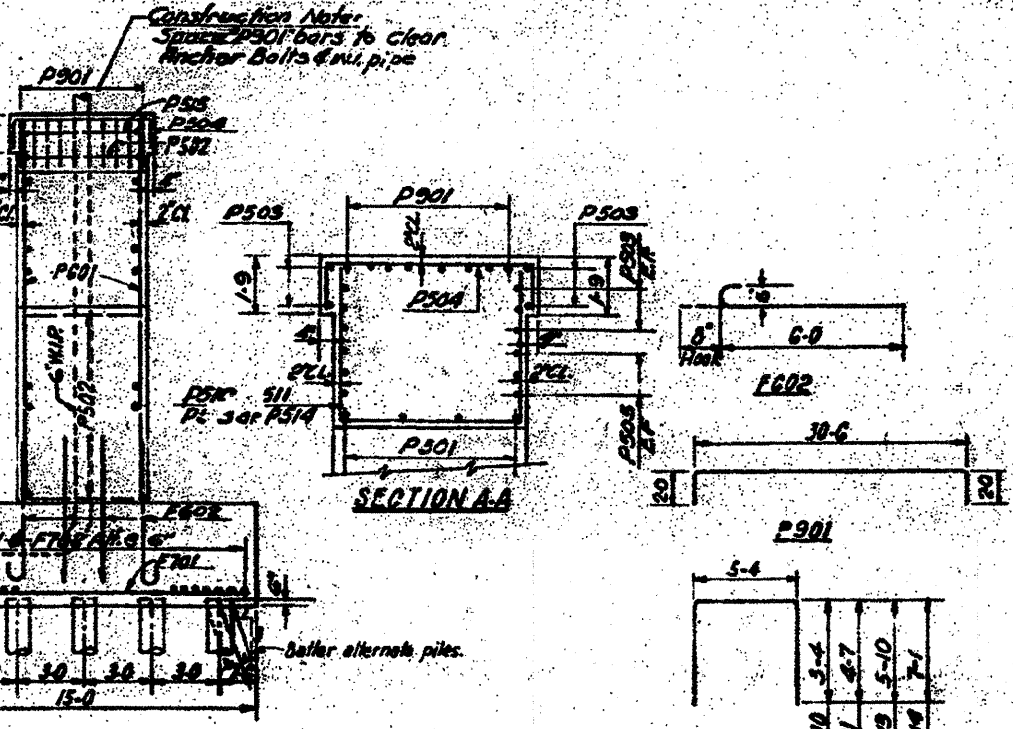
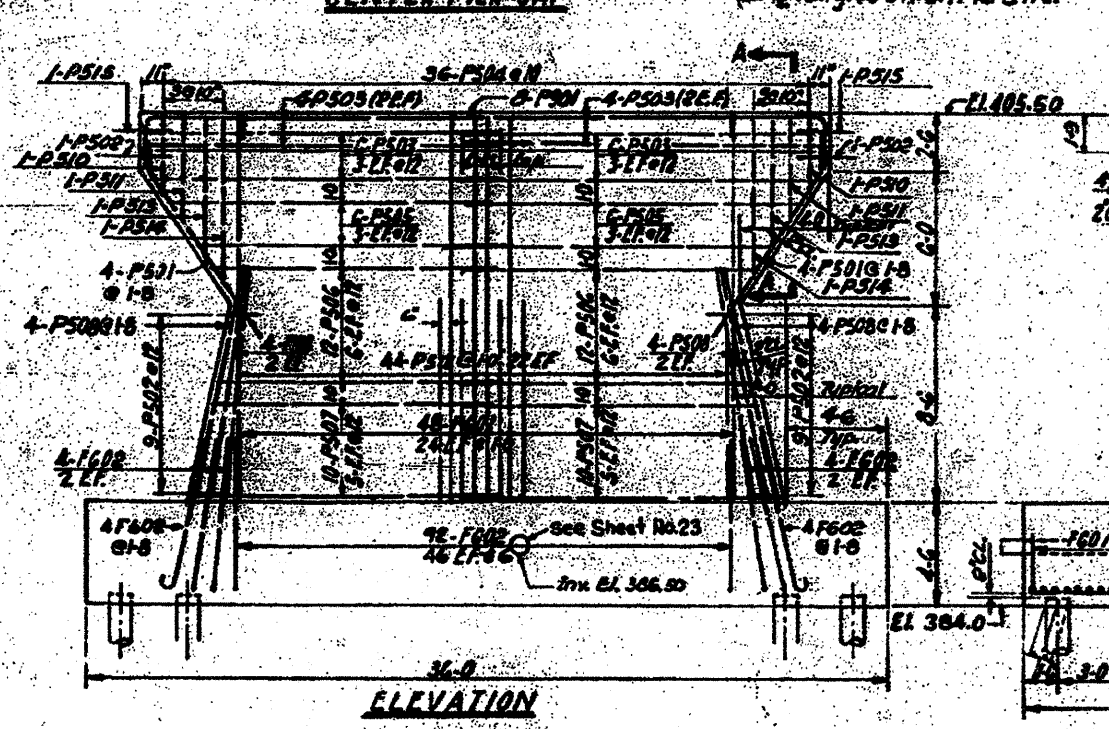


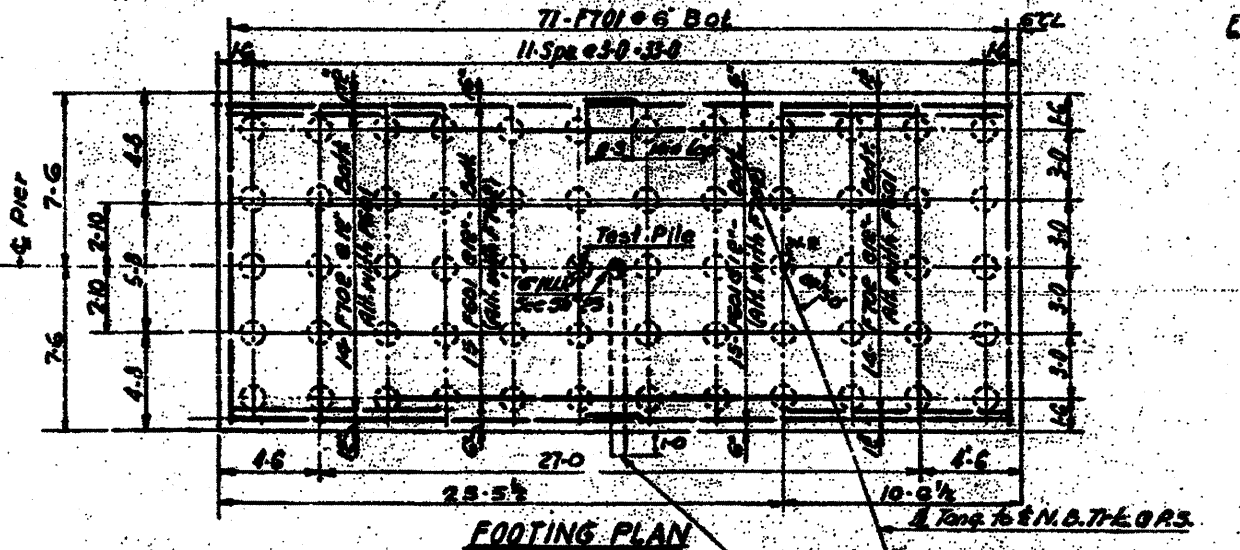
**BAR LIST**

Mark	No. Req'd	Size	Length	Shape
F601	30	5	19-0	U
F602	100	5	6-0	U
F701	71	7	14-0	U
F702	28	7	10-3	U
P501	8	5	10-0	U
P502	20	5	8-0	U
P503	20	5	16-5	U
P504	36	5	8-10	U
P505	17	5	16-9	U
P506	24	5	13-1	U
P507	24	5	14-1	U
P508	16	5	10-3	U
P510	2	5	21-0	U
P511	2	5	14-6	U
P512	44	5	8-6	U
P513	8	5	17-0	U
P514	2	5	19-6	U
P515	2	5	8-5	U
P601	48	6	14-2	U
P901	8	9	34-6	U



**BILL OF MATERIALS**

Class X Concrete	CY	1065
Reinforcement bars	Lbs	8340
Furnishing concrete piles	LP	2360
Driving concrete piles	LP	8360
Test Pile (Concrete)	EA	1



**PILE DATA**

Type: Concrete Piles	
Estimated Length	40
Capacity	40 Tons
No. Required	59
Test Pile	1

**Notes**

See Sh#1 for Gen. Notes  
See Sh#2 for Location  
See Sh#23 for Drainage Details  
Care shall be taken in placing reinforcement bars so as to clear anchor bolts.  
For pile details see Sheet No. 24

STATE OF ILLINOIS  
DEPARTMENT OF PUBLIC WORKS & BLDGS.  
DIVISION OF HIGHWAYS  
CITY OF EAST ST. LOUIS  
**EAST ST. LOUIS EXPRESSWAY**  
L. & N. R.R. OVER WEST SOUND EXPWAY,  
RAMP "L", EAST SOUND EXPWAY AND RAMP "N"  
CENTER PIER  
H. W. LOGGNER, INC.  
ENGINEERS  
DATE JULY 1960 CHICAGO, ILLINOIS SHEET NO. 6

FOR INFORMATION ONLY

Designed by: B.M.  
Drawn by: J.W.  
Checked by: J.W.