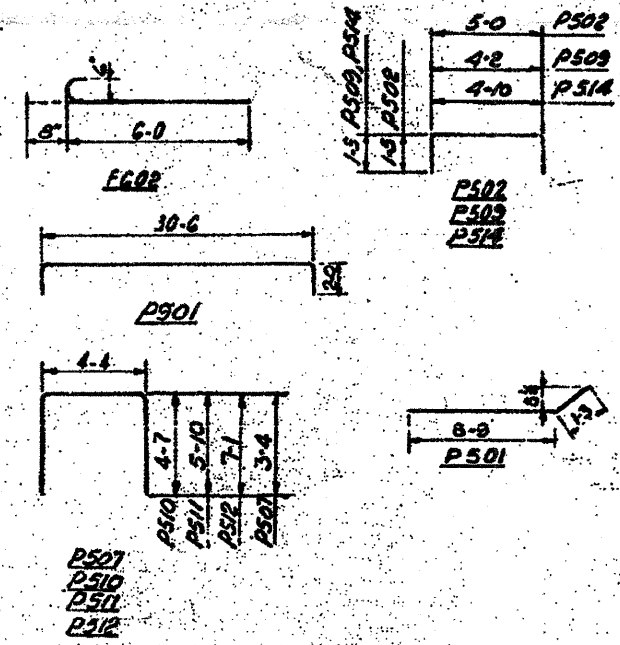
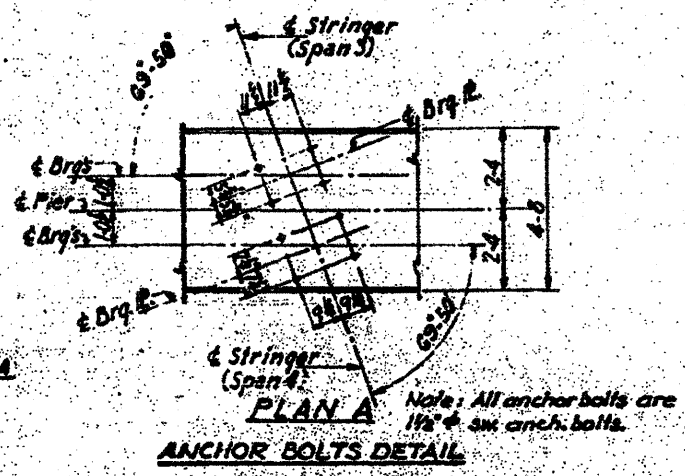
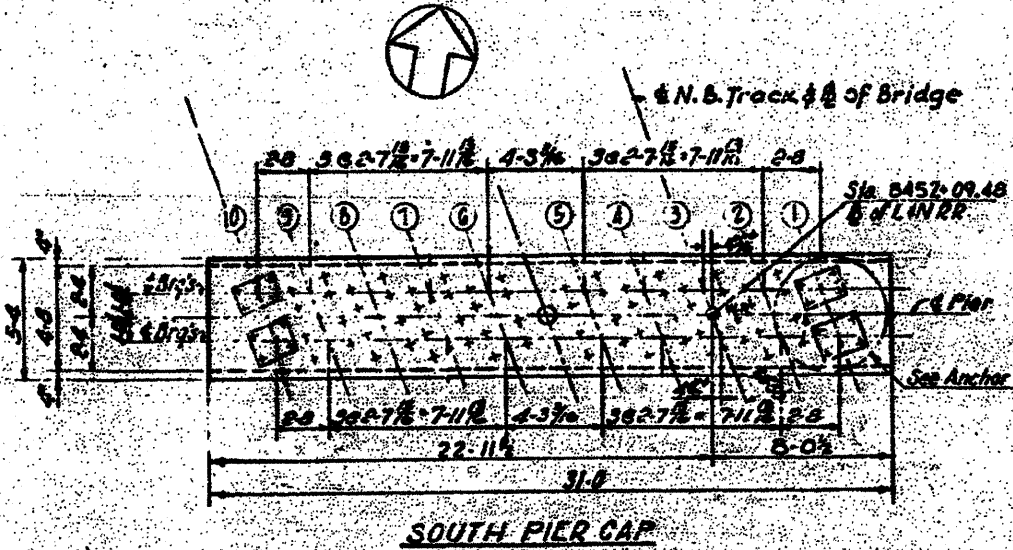
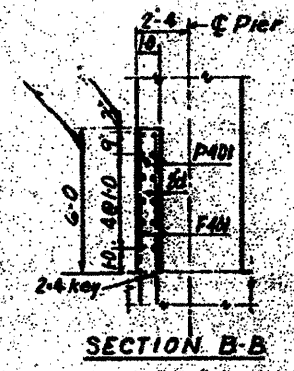
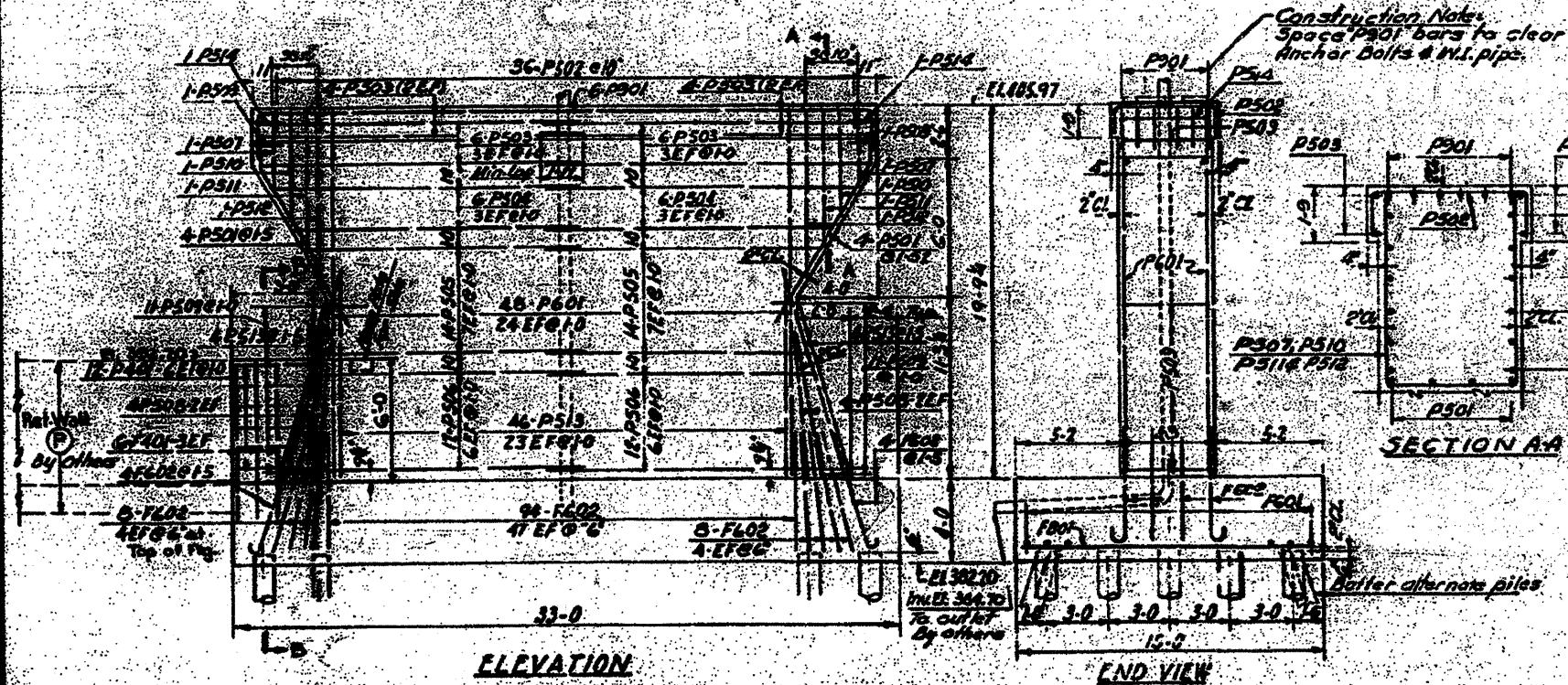


PROJECT	NO.	DATE	BY	CHECKED
F&E-103-19	19	St. Clair		



BAR SCHEDULE				
Mark	No. Req'd	Size	Length	Shape
F501	2	5/8"	18-0	—
F401	6	3/4"	7-10	—
F301	65	1/2"	16-6	—
F601	30	3/8"	10-3	—
F602	118	3/8"	6-8	—
P501	8	5/8"	10-0	—
P502	36	3/4"	7-10	—
P503	20	5/8"	16-6	—
P504	12	5/8"	15-0	—
P505	28	5/8"	13-0	—
P506	28	5/8"	11-6	—
P507	2	5/8"	11-0	—
P508	8	5/8"	9-0	—
P509	24	5/8"	6-8	—
P510	2	5/8"	15-6	—
P511	2	5/8"	16-0	—
P512	2	5/8"	10-6	—
P513	54	5/8"	12-9	—
P514	2	5/8"	7-4	—
P601	48	3/8"	19-7	—
P901	6	3/4"	34-6	—
P901	12	3/4"	4-8	—

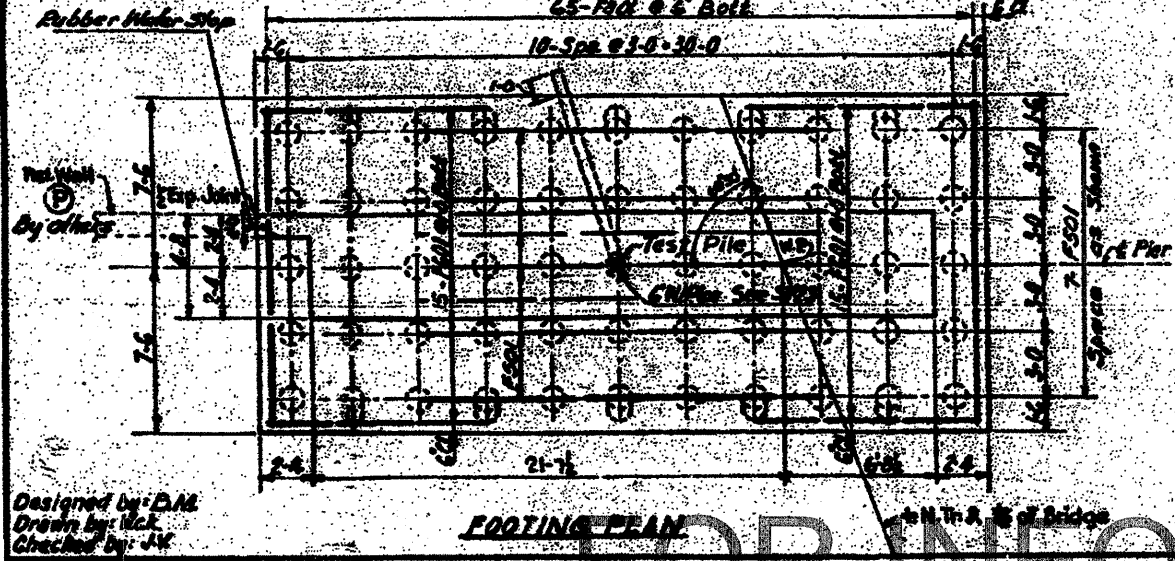


BILL OF MATERIALS		
Class "C" Concrete	CY	166.5
Reinforcement bars	Lbs	9250
Furnishing concrete piles	LF	2037
Driving concrete piles	LF	2037
Test Pile (Concrete)	Lbs	2037

NOTES:

- See Sheet #1 for Gen. Notes
- See Sheet #2 for Location
- See Sheet #23 for Drainage Details
- See Sheet #7 for Exp. Joint details
- Care shall be taken in placing reinforcement bars so as to clear anchor bolts.
- For pile details see Sh. #24

PILE DATA	
Type:	Concrete Piles
Estimated Length	38 ft.
Capacity	40 tons
No. Required	34 No.
Test Pile	1 No.



STATE OF ILLINOIS
 DEPARTMENT OF PUBLIC WORKS & BLDGS.
 DIVISION OF HIGHWAYS
 &
 CITY OF EAST ST. LOUIS
EAST ST. LOUIS EXPRESSWAY
 L & N. R. OVER WEST BOUND EXPWAY,
 RAMP "L", EAST BOUND EXPWAY AND RAMP "M"

SOUTH PIER
 H. W. LOCHNER, INC.
 ENGINEERS
 DATE JULY 1960 CHICAGO, ILLINOIS SHEET NO. 10

FOR INFORMATION ONLY