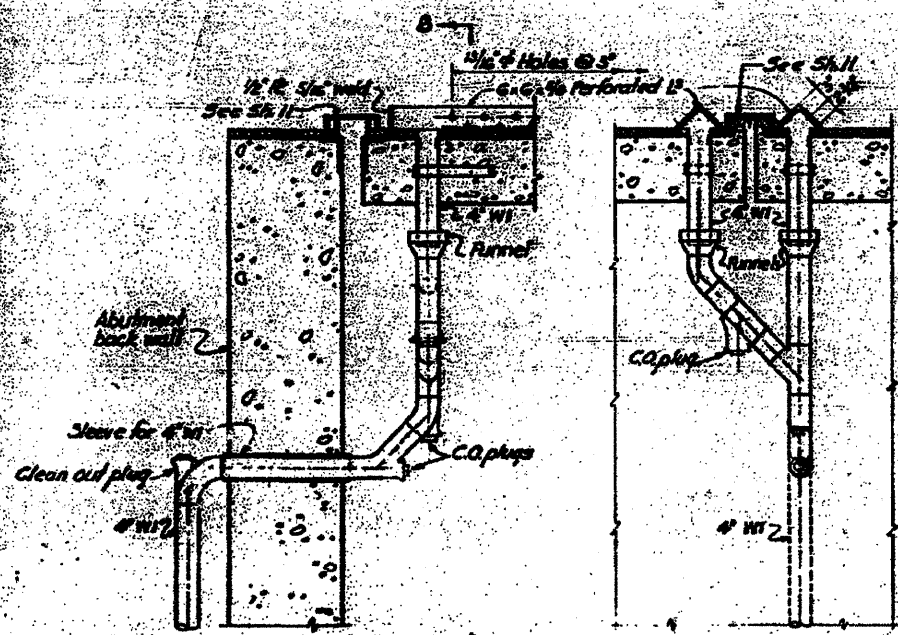
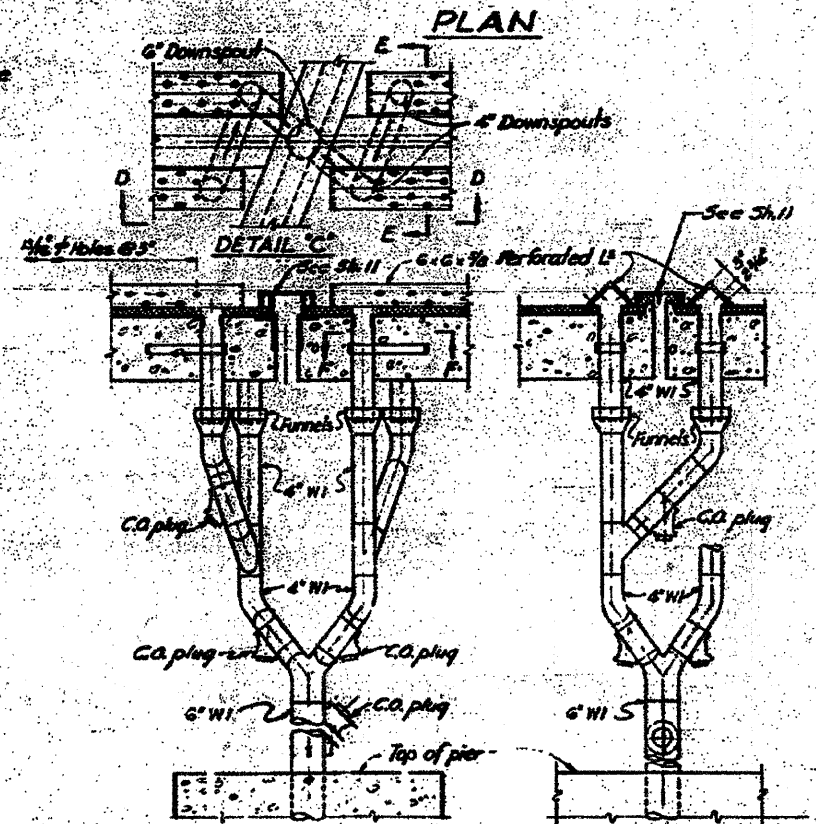


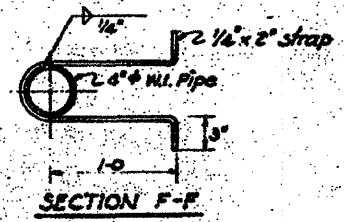
The perforated angles should be furnished in 10'-0" increments on curved slabs.



SECTION A-A DOWNSPOUT AT ABUTMENTS



SECTION D-D DOWNSPOUT AT PIERS



NOTE:
 All Wrought iron pipe shall be standard weight, fittings shall be either screw joint or welded joint see special provisions.

Designed by: R.B.
 Drawn by: R.B.
 Checked by: R.B.

FOR INFORMATION ONLY

STATE OF ILLINOIS
 DEPARTMENT OF PUBLIC WORKS & BLDGS.
 DIVISION OF HIGHWAYS
 CITY OF EAST ST. LOUIS
 EAST ST. LOUIS EXPRESSWAY
 L. & N. R.R. OVER WEST SOUND EXPWAY, RAMP "L", EAST SOUND EXPWAY AND RAMP "M"
 DECK DRAINAGE DETAILS
 H. W. LOCHNER, INC.
 ENGINEERS
 DATE JULY 1960 CHICAGO, ILLINOIS SHEET NO. 24