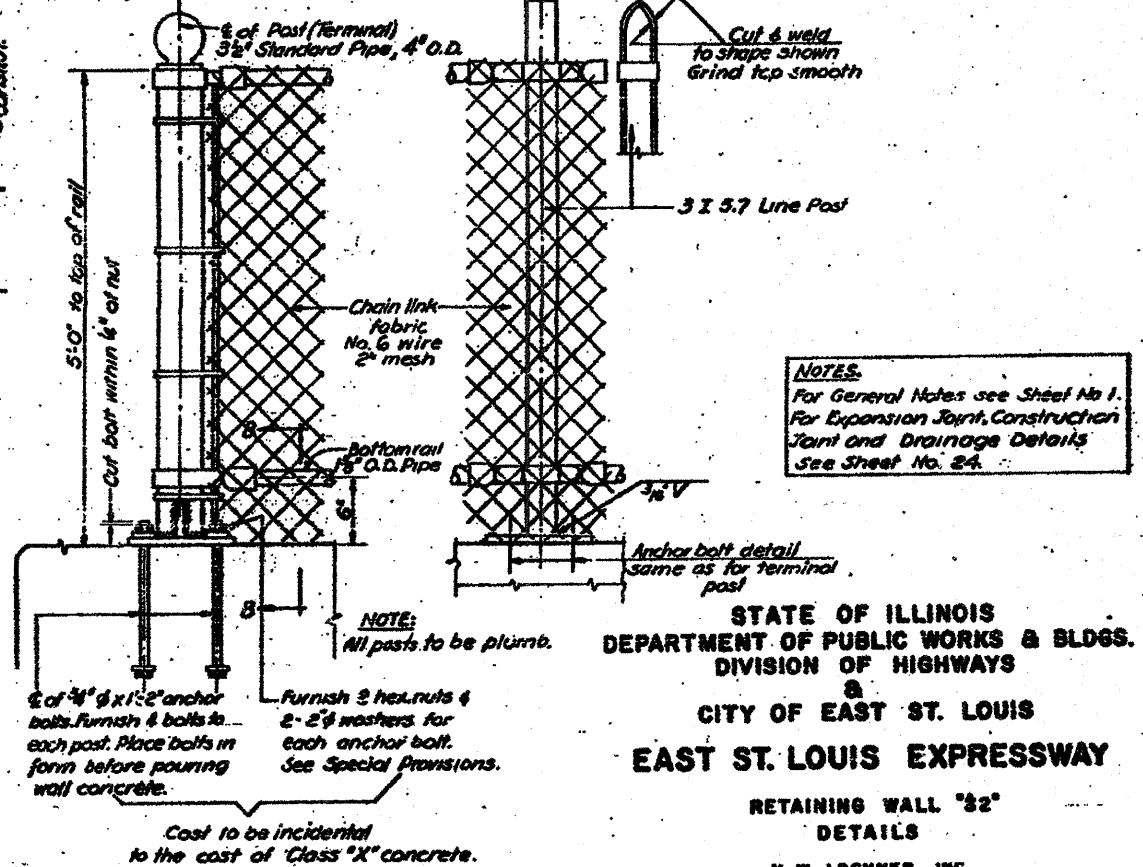
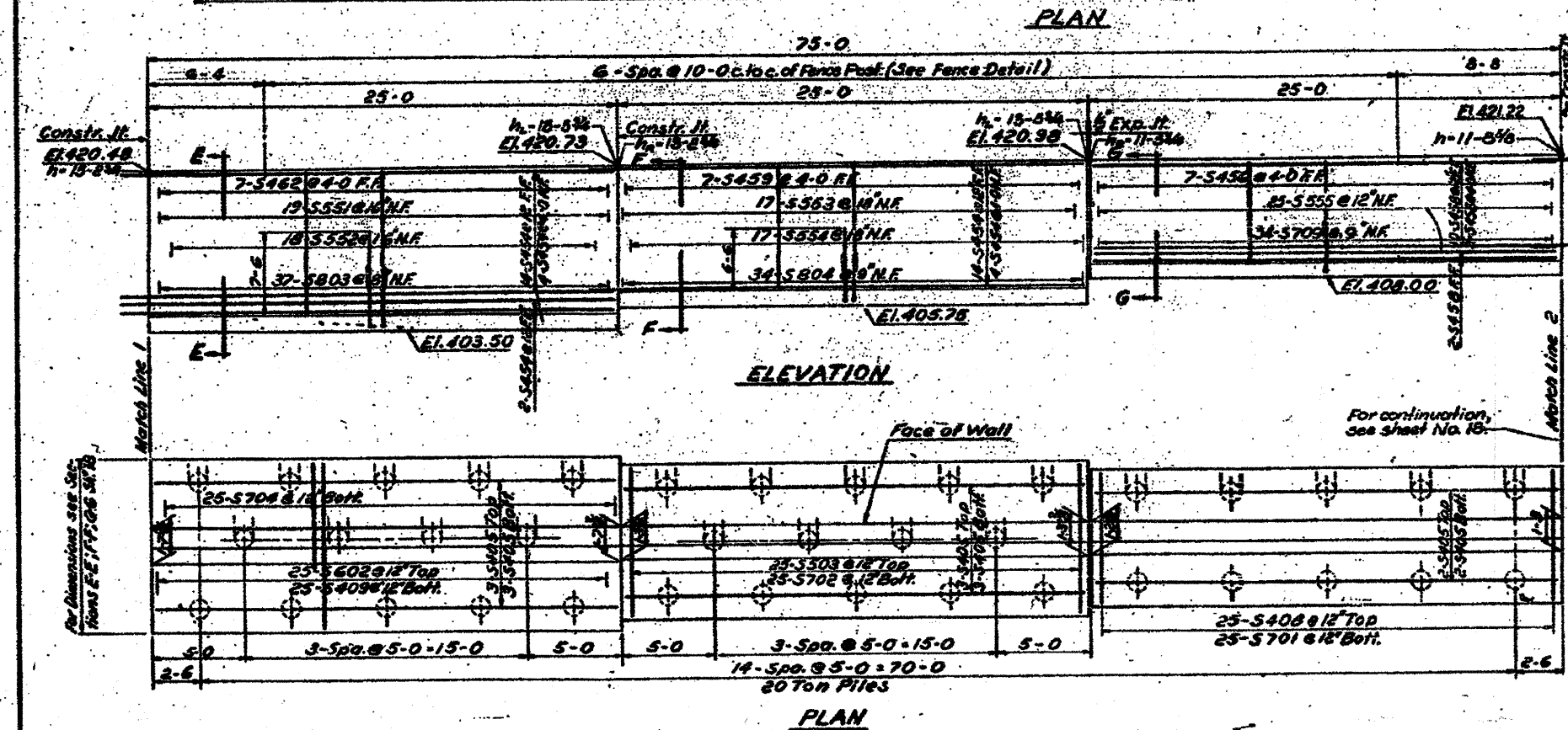
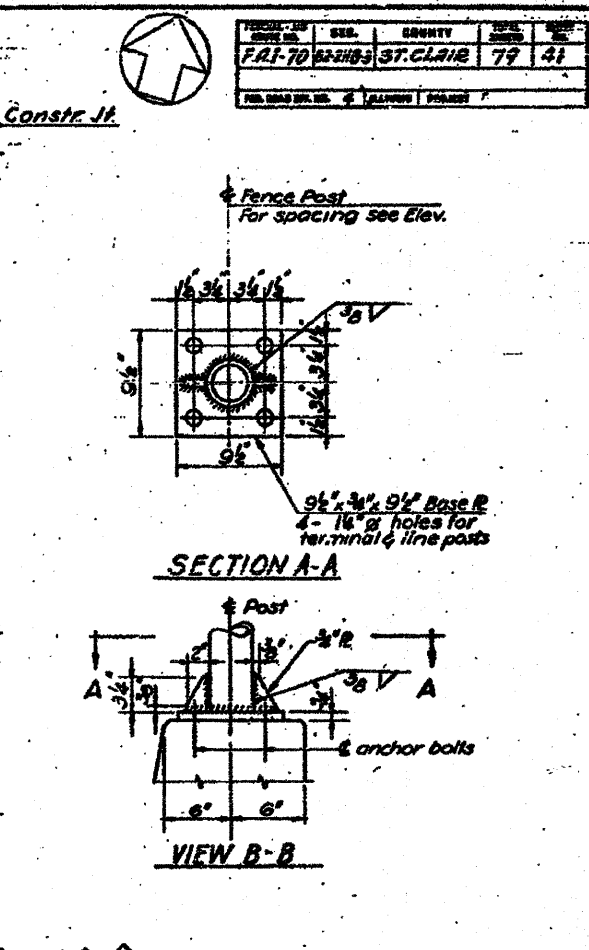
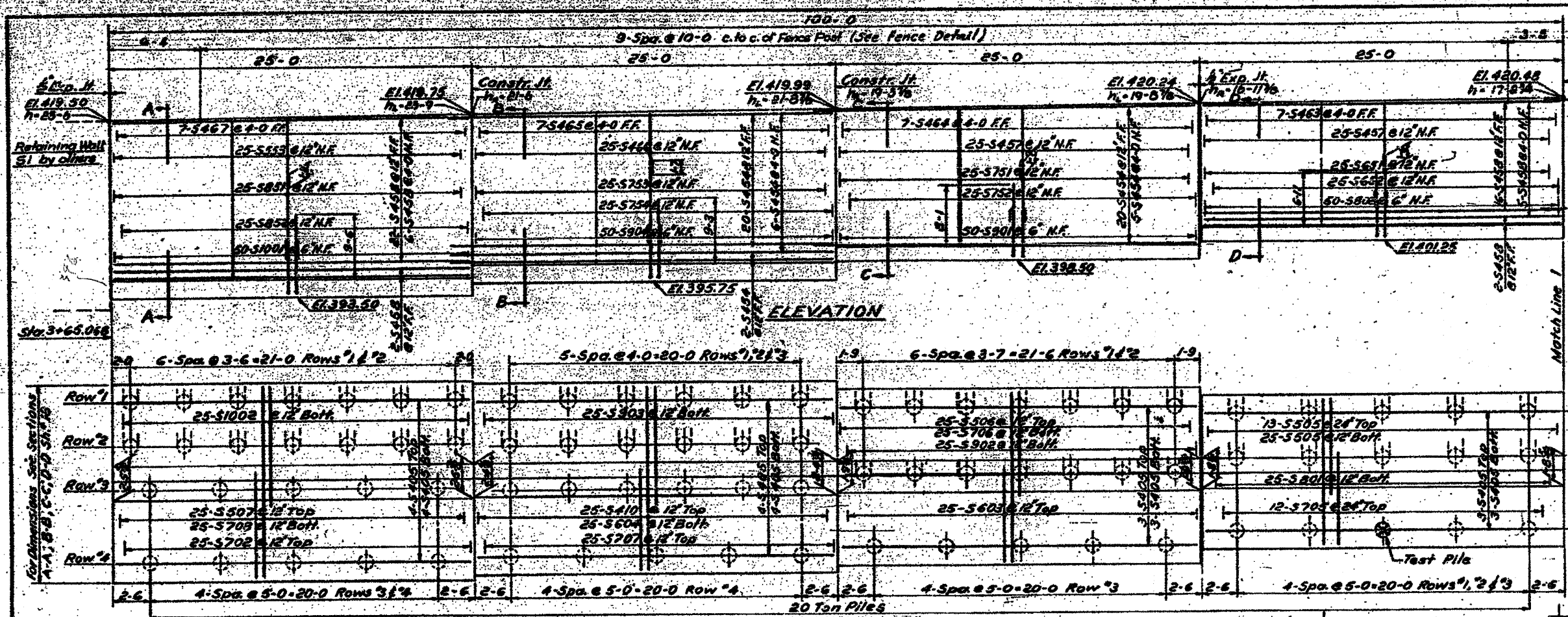


PROJECT NO.	DATE	COUNTY	SHEET NO.
F.A.I. 70 62389	ST. CLAIR	79	41



NOTES:
 For General Notes see Sheet No. 1.
 For Expansion Joint, Construction Joint and Drainage Details see Sheet No. 24.

STATE OF ILLINOIS
 DEPARTMENT OF PUBLIC WORKS & BLDGS.
 DIVISION OF HIGHWAYS
 &
 CITY OF EAST ST. LOUIS
EAST ST. LOUIS EXPRESSWAY

RETAINING WALL "32"
 DETAILS
 H. W. LOCHNER, INC.
 ENGINEERS
 CHICAGO, ILLINOIS SHEET NO. 17

Designed by: F. Z.
 Drawn by: E. M.
 Checked by: S. K.

FOR INFORMATION ONLY

SHEET A-43
 236