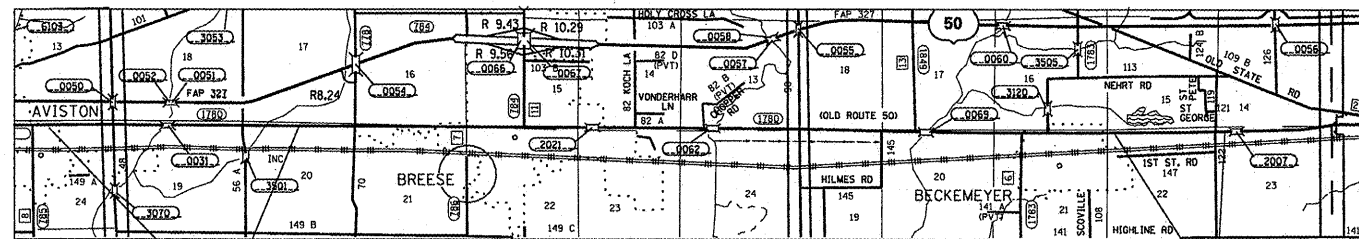
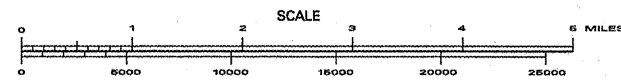


STATE OF ILLINOIS
DEPARTMENT OF TRANSPORTATION
DIVISION OF HIGHWAYS

**PROPOSED
HIGHWAY PLANS**

FAP RTE 805/FAS RTE 1780 (IL 161/OLD US 50)
SECTION 123-1-J, (26,24)-J
PROJECT ACHSIP-000S(804)
GUARDRAIL - HSIP
ST. CLAIR & CLINTON COUNTIES

C-98-004-10

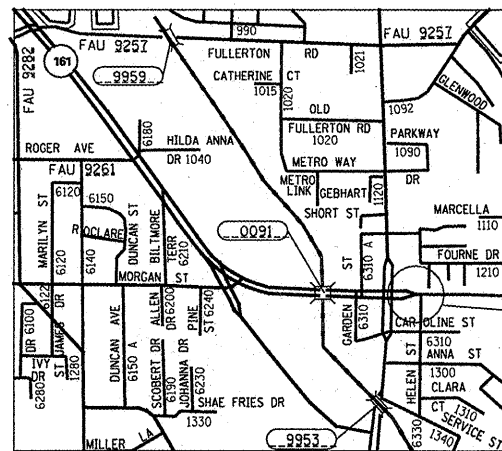


LOCATIONS 5 - 9 CLINTON COUNTY

LAT: 38.611823
LONG: -89.565268

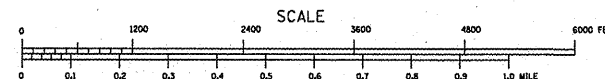
LOCATIONS 2 - 4

LAT: 38.609483
LONG: -89.408497



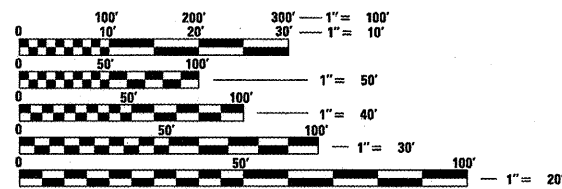
LOCATION 1

LAT: 38.533731
LONG: -89.982280



INDEX OF SHEETS

- 1 COVER SHEET, INDEX OF SHEETS
- 2 GENERAL NOTES, HIGHWAY STANDARDS, ADT, COMMITMENTS
- 3 SUMMARY OF QUANTITIES
- 4 TYPICAL SECTIONS
- 5-13 PLAN SHEETS
- 14 - 17 GUARDRAIL DETAILS FOR LOCATION 1



FULL SIZE PLANS HAVE BEEN PREPARED USING STANDARD ENGINEERING SCALES. REDUCED SIZED PLANS WILL NOT CONFORM TO STANDARD SCALES. IN MAKING MEASUREMENTS ON REDUCED PLANS, THE ABOVE SCALES MAY BE USED.

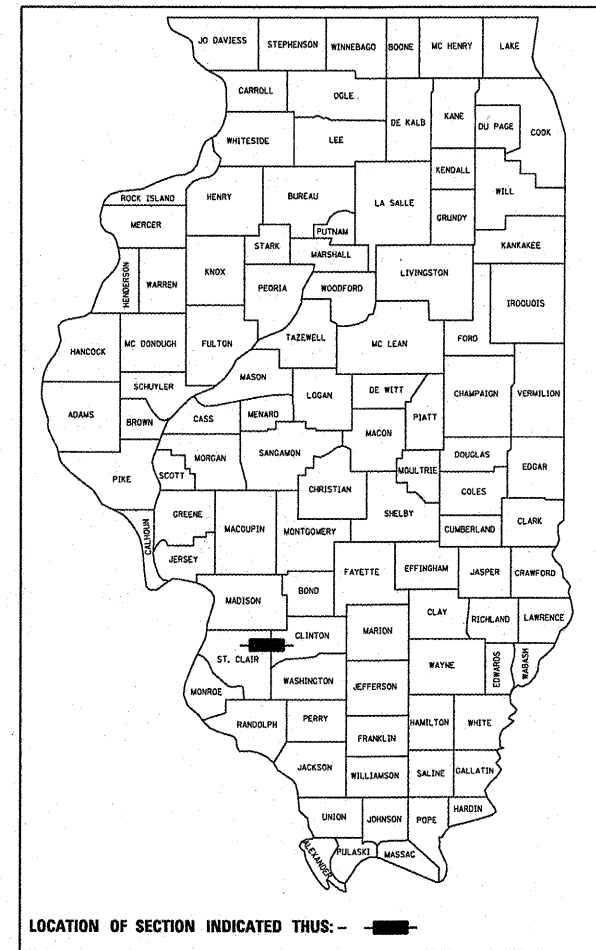
J.U.L.I.E.
JOINT UTILITY LOCATION INFORMATION FOR EXCAVATION
1-800-892-0123
OR 811

PROJECT ENGINEER: CHERYL KEPLAR 618-346-3186
PROJECT MANAGER: PATTI LEBEAU 618-346-3179

CONTRACT NO. 76D41

F.A. RTE.	SECTION	COUNTY	TOTAL SHEETS	SHEET NO.
•	123-1-J, (26,24)-J	**	17	1
ILLINOIS			CONTRACT NO. 76D41	
*FAP 805/FAS 1780			**ST. CLAIR & CLINTON	

D-98-010-10



LOCATION OF SECTION INDICATED THIS: - [shaded area] -

STATE OF ILLINOIS
DEPARTMENT OF TRANSPORTATION
DIVISION OF HIGHWAYS

SUBMITTED December 3, 2009
Man C. James
DEPUTY DIRECTOR OF HIGHWAYS, REGION 5 ENGINEER

January 27, 2010
Scott E. Stettin
Acting ENGINEER OF DESIGN AND ENVIRONMENT

January 29, 2010
Christine M. Reed
DIRECTOR OF HIGHWAYS, CHIEF ENGINEER

**PRINTED BY THE AUTHORITY
OF THE STATE OF ILLINOIS**