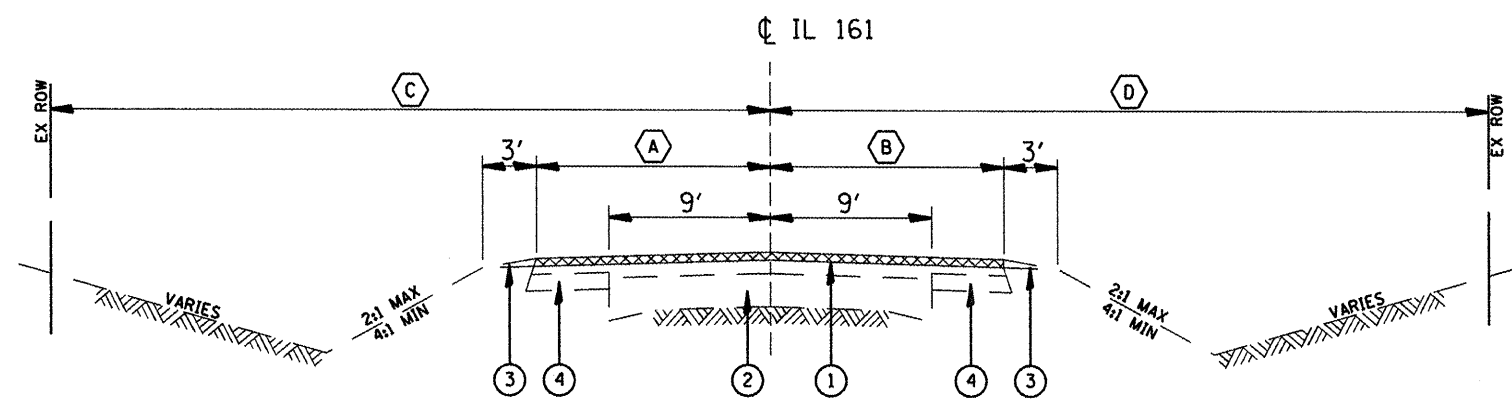


EXISTING TYPICAL

STA 59+85 TO STA 63+36 (LT)
STA 62+02 TO STA 63+36 (RT)

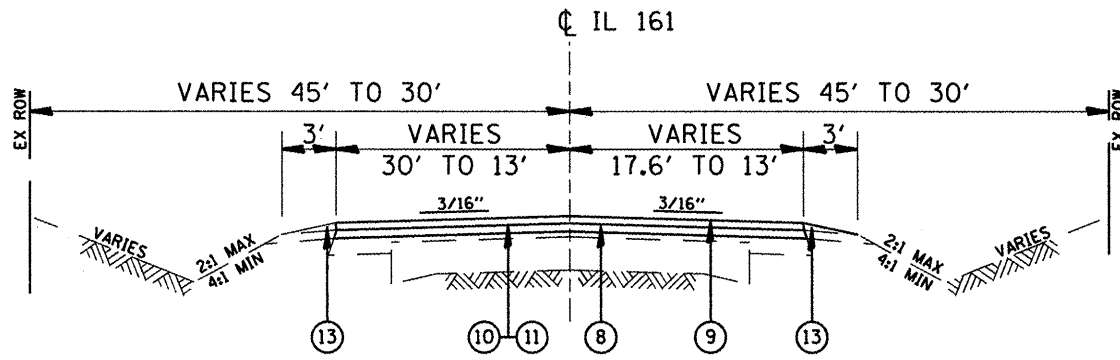
① IS 5 1/2" FROM STA 62+02 TO STA 63+36



EXISTING TYPICAL

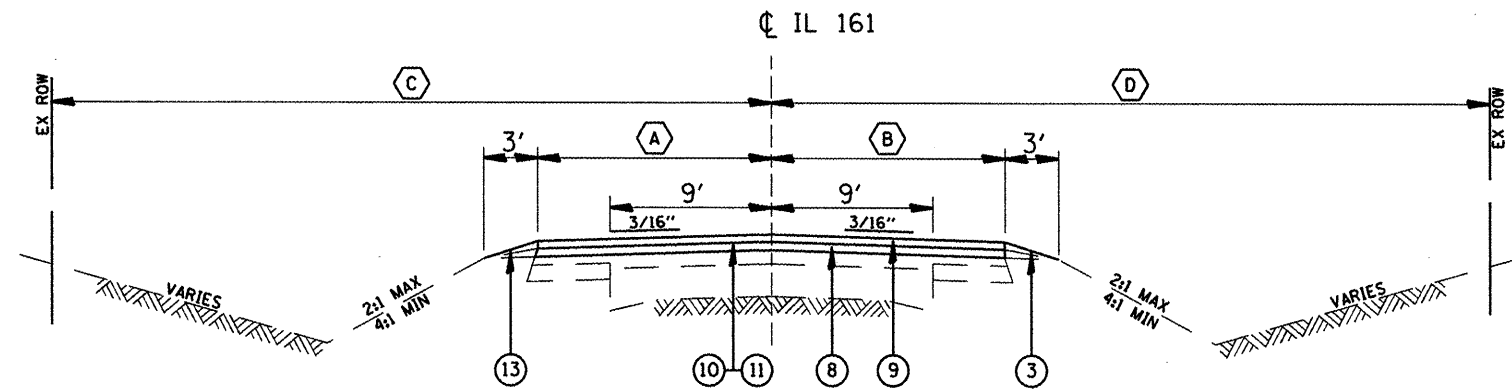
STA 63+36 TO STA 130+52.6

① IS 9/4" FROM STA 63+36 TO STA 130+52.6



PROPOSED TYPICAL

STA 59+85 TO STA 63+36 (LT)
STA 62+02 TO STA 63+36 (RT)



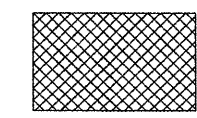
PROPOSED TYPICAL

STA 63+36 TO STA 130+52.6

- A IS 13' FROM STA 63+36 TO STA 95+00
VARIES FROM 13' TO 21.7' FROM STA 95+00 TO STA 103+50
VARIES FROM 21.7' TO 12' FROM STA 103+50 TO STA 130+52.6
- B IS 13' FROM STA 63+36 TO STA 95+00
VARIES FROM 13' TO 26.5' FROM STA 95+00 TO STA 103+50
VARIES FROM 26.5' TO 12' FROM STA 103+50 TO STA 130+52.6
- C IS 30' FROM STA 63+36 TO STA 95+00
VARIES FROM 30' TO 62.3' FROM STA 95+00 TO STA 103+50
VARIES FROM 62.3' TO 30' FROM STA 103+50 TO STA 130+52.6
- D IS 30' FROM STA 63+36 TO STA 95+00
VARIES FROM 30' TO 62.3' FROM STA 95+00 TO STA 103+50
VARIES FROM 62.3' TO 30' FROM STA 103+50 TO STA 130+52.6

LEGEND

- ① EXISTING BITUMINOUS CONCRETE (VARIES 5 1/2" TO 9 1/4")
- ② EXISTING PCC PAVEMENT, (9"-6"-9")
- ③ EXISTING AGGREGATE SHOULDERS
- ④ EXISTING STABILIZED BASE COURSE (BAM), 9"
- ⑤ EXISTING STABILIZED SHOULDERS, (8")
- ⑥ EXISTING COMBINATION CONCRETE CURB AND GUTTER TYPE B-6.24
- ⑦ EXISTING PCC SIDEWALK, (4")
- ⑧ PROPOSED LEVELING BINDER 3/4"
- ⑨ PROPOSED HMA SURFACE COURSE 1 1/2"
- ⑩ PROPOSED AGGREGATE (PRIME COAT)
- ⑪ PROPOSED BITUMINOUS MATERIAL (PRIME COAT)
- ⑫ PROPOSED HMA SHOULDERS
- ⑬ PROPOSED AGGREGATE WEDGE, TYPE B



HMA SURFACE REMOVAL 1 1/2"

FILE NAME *	USER NAME * #USER#	DESIGNED - ---	REVISED - ---	STATE OF ILLINOIS DEPARTMENT OF TRANSPORTATION	TYPICAL SECTION	F.A.P. RTE.	SECTION	COUNTY	TOTAL SHEETS	SHEET NO.
#FILEL*		DRAWN - ---	REVISED - ---			805	10185	MADISON	62	8
		CHECKED - ---	REVISED - ---			CONTRACT NO. 1BD46		FED. ROAD DIST. NO. - [ILLINOIS] FED. AID PROJECT		
		PLOT SCALE = #SCALE#	DATE - ---	SCALE: ---	SHEET NO. 2 OF 4 SHEETS	STA. ---	TO STA. ---			