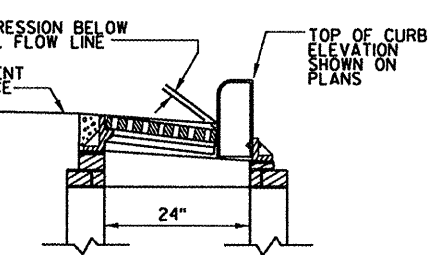
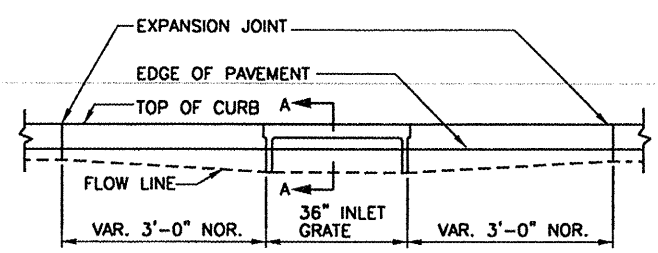
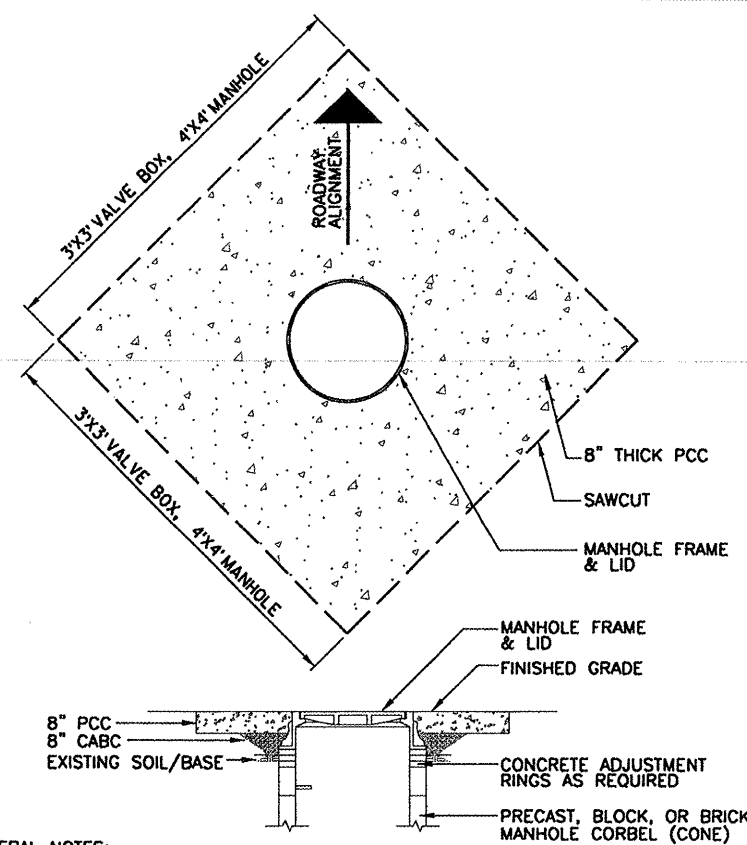


- GENERAL NOTES:**
1. SEE PLANS FOR SIZE, NUMBER, AND LOCATION OF PIPES.
  2. DETAILS OF CONSTRUCTION, MATERIALS AND WORKMANSHIP NOT SHOWN ON THIS DRAWING SHALL CONFORM TO THE PERTINENT REQUIREMENTS OF THE SPECIFICATIONS.
  3. DETAILED DRAWINGS FOR PROPOSED ALTERNATE DESIGNS FOR UNDERGROUND DRAINAGE STRUCTURES SHALL BE SUBMITTED TO THE ENGINEER FOR APPROVAL PROVIDING THAT SUCH ALTERNATE DESIGNS MAKE PROVISION FOR EQUIVALENT CAPACITY AND STRENGTH.
  4. ALL PRECAST INLET UNITS SHALL CONFORM TO THE PERTINENT REQUIREMENTS OF AASHTO DESIGNATION M 199.
  5. PRECAST REINFORCED BASES SHALL BE PLACED ON A BED OF MATERIAL AT LEAST 6 INCHES IN DEPTH, WHICH MEETS THE REQUIREMENTS FOR GRANULAR BACKFILL. THIS BEDDING SHALL BE COMPACTED AND PROVIDE UNIFORM SUPPORT FOR THE ENTIRE AREA OF THE BASE.
  6. PRECAST REINFORCED CONCRETE FLAT SLAB TOPS MAY BE USED ON THE STRUCTURES. THE TOPS SHALL BE INSTALLED ON A BED OF MORTAR.
  7. ALL BAR STEEL AND WELDED WIRE FABRIC REINFORCEMENT SHALL BE EMBEDDED 2 INCHES CLEAR UNLESS OTHERWISE SHOWN OR NOTED.
  8. PRECAST REINFORCED CONCRETE RISERS SHALL BE PLACED WITH TONGUE DOWN.

**SPECIAL INLET DETAIL**

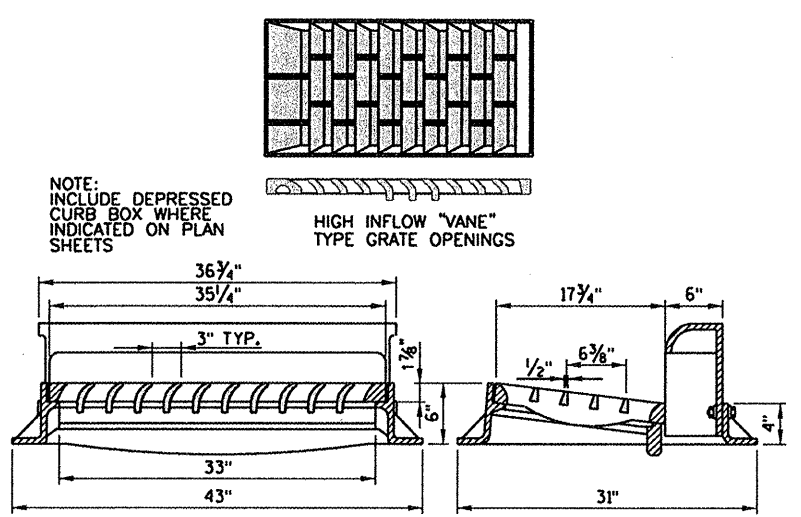


**CURB AND GUTTER AT INLETS DETAIL**

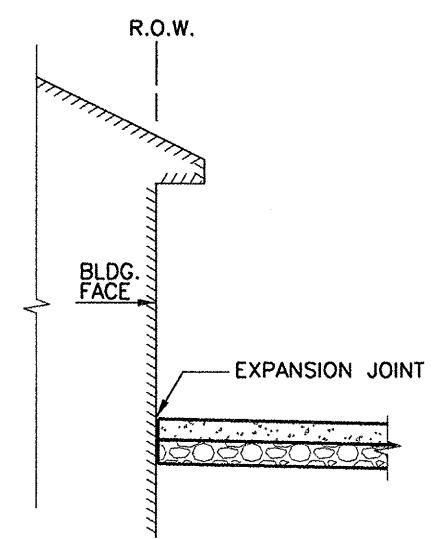


- GENERAL NOTES:**
1. THE EXISTING PAVEMENT SHALL BE SAW CUT IN THE FORM A SQUARE
  2. THE DISTURBED PAVEMENT AREA SHOULD BE CONFINED TO THE SMALLEST AREA POSSIBLE; MINIMUM 3 FOOT BY 3 FOOT SQUARE, MAXIMUM 6 FEET BY 6 FEET SQUARE.
  3. THE ORIENTATION OF THE SQUARE SAW CUT SHALL BE THAT THE DIAGONAL FALLS IN LINE WITH THE ROADWAY ALIGNMENT (SEE ABOVE)
  4. CONCRETE TO BE TREATED WITH TWO COATS OF SEALER.
  5. ADJUSTMENT TO BE COMPLETED AFTER ASPHALT PAVING IS INSTALLED.

**MANHOLE AND VALVE BOX PAVEMENT RESTORATION**



**FRAME AND GRATE FOR SPECIAL INLET**



**SIDEWALK MEETS BUILDING FACE**



FILE NAME = k:\plans\112 DETAILS.dgn	USER NAME = Mark	DESIGNED - MW, NW	REVISED - MAY 1, 2009	<b>STATE OF ILLINOIS DEPARTMENT OF TRANSPORTATION</b>	<b>DETAILS</b>	F.A. RTE.	SECTION	COUNTY	TOTAL SHEETS	SHEET NO.
		DRAWN - MW	REVISED - MAY 12, 2009			08-00043-00-SW	JO DAVIESS	17	12	
		CHECKED - PR	REVISED - AUGUST 26, 2009			CONTRACT NO.				
		DATE	REVISED			[ILLINOIS] FED. AID PROJECT				
SCALE: SHEET NO. OF SHEETS STA. TO STA.										