

STATE OF ILLINOIS
DEPARTMENT OF TRANSPORTATION
DIVISION OF HIGHWAYS
PLANS FOR PROPOSED
MULTI-USE PATH
THE LOWELL TRAIL, PHASE 2

ROUTE NO.	SECTION	COUNTY	TOTAL SHEETS	SHEET
S. B. L.	*	LEE	21	1
F.A.A.L.				
FED. ROAD DIST. NO. 7	ILLINOIS	FED. AID PROJECT-		

* Section 09-P4000-01-BT Contract #85504

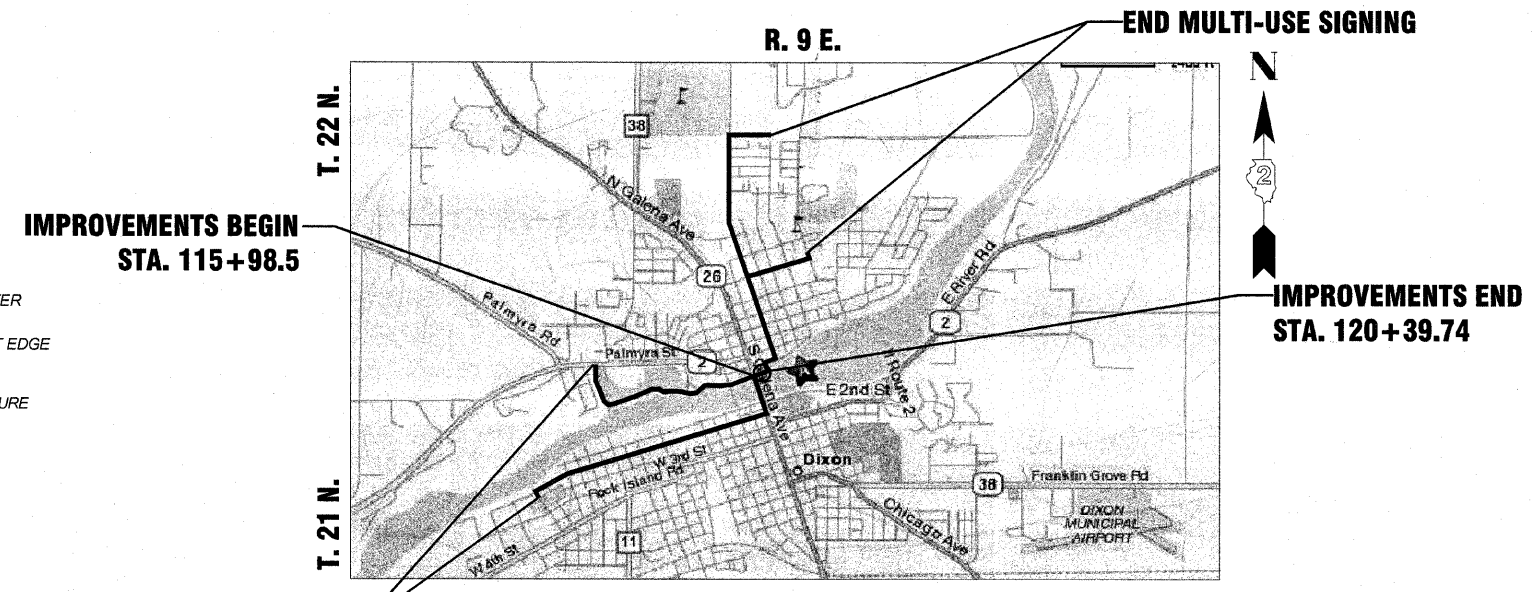
INDEX OF SHEETS

1	COVER SHEET
2	GENERAL NOTES & SUMMARY OF QUANTITIES
3	SCHEDULE OF QUANTITIES
4	TYPICAL SECTIONS & DETAILS
5-6	SIGNAGE PLAN
7	REMOVAL PLAN
8	OVERALL PLAN
9	PLAN & PROFILE
10-13	WALL DETAILS
14	RAILING PLAN & DETAILS
15-17	CROSS SECTIONS
18	TRAFFIC CONTROL PLAN
19	EROSION CONTROL PLAN
20-21	DETAILS

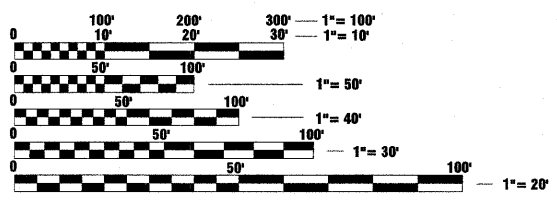
SECTION 09-P4000-01-BT
DIXON PARK DISTRICT
PROJECT ARA-00D2(140)
JOB NO. C-92-044-10

HIGHWAY STANDARDS

STANDARD	TITLE
280001-05	TEMPORARY EROSION CONTROL SYSTEMS
424001-05	CURB RAMPS FOR SIDEWALKS
602401-02	MANHOLE, TYPE A
602601-02	PRECAST REINFORCED CONCRETE FLAT SLAB TOP
604001-03	FRAME AND LIDS, TYPE 1
606001-04	CONCRETE CURB TYPE B AND COMBINATION CONCRETE CURB AND GUTTER
606101-04	TYPE A GUTTER (INLET, OUTLET & ENTRANCE)
701006-03	OFF-RD OPERATIONS, 2L, 2W, 15' (4.5 m) TO 24' (600 mm) FROM PAVEMENT EDGE
701201-03	LANE CLOSURE, 2L, 2W, DAY ONLY FOR SPEEDS >45 MPH
701301-03	LANE CLOSURE, 2L, 2W, SHORT TIME OPERATIONS
701801-04	LANE CLOSURE, MULTILANE 1W OR 2W CROSSWALK OR SIDEWALK CLOSURE
701901-01	TRAFFIC CONTROL DEVICES
720001-01	SIGN PANEL MOUNTING DETAILS
720006-02	SIGN PANEL ERECTION DETAILS
720011-01	METAL POSTS FOR SIGNS, MARKERS & DELINEATORS
728001-01	TELESCOPING STEEL SIGN SUPPORT
729001-01	APPLICATIONS OF TYPES A & B METAL POSTS (FOR SIGNS & MARKERS)



LOCATION MAP - DIXON, ILLINOIS
PATH CONSTRUCTION LENGTH = 441.24 FT (0.084 MI)
TOTAL LENGTH OF SECTION (INCLUDING SIGNAGE) = 25,500 FT (4.84 MI)



THE LOCATIONS OF UTILITY FACILITIES AS SHOWN ON THESE PLANS ARE AN ESTIMATE AND NOT INTENDED AS FIELD LOCATIONS FOR CONSTRUCTION. THE CONTRACTOR IS RESPONSIBLE FOR CONTACTING ALL UTILITIES PRIOR TO CONSTRUCTION AND CALLING J.U.L.I.E. AT 800-892-0123 FOR CONFIRMATION OF EXISTING UTILITY LOCATIONS.

J.U.L.I.E.
JOINT UTILITY LOCATION INFORMATION FOR EXCAVATION
1-800-892-0123

TRAFFIC DATA:
 FUNCTIONAL CLASSIFICATION: LOWELL TRAIL - EXISTING ±10'
 WIDE MULTI USE TRAIL NOT ADJACENT TO ROADWAY



Scott A. Brown 12/15/09
 DATE
 SCOTT A. BROWN
 DIXON, ILLINOIS
 ILLINOIS LICENSED PROFESSIONAL
 ENGINEER NO. 062-053649
 EXPIRES 11-30-2011

DIXON PARK DISTRICT

APPROVED 12-16 2009

Debra Carey
 DIXON PARK DISTRICT

STATE OF ILLINOIS
DEPARTMENT OF TRANSPORTATION
DIVISION OF HIGHWAYS

PASSED January 5 2010

James L. Johnson
 DISTRICT 2 ENGINEER OF LOCAL ROADS & STREETS

RELEASED FOR BID BASED ON LIMITED REVIEW January 5 2010

George F. Ryan
 DEPUTY DIRECTOR OF HIGHWAYS, REGION 2 ENGINEER

PRINTED BY THE AUTHORITY
OF THE STATE OF ILLINOIS

 www.wendlergs.com GROUND BREAKING SOLUTIONS engineers - surveyors - scientists ph: 815.288.2261	Date: 12/15/2009
	Job: 2090299